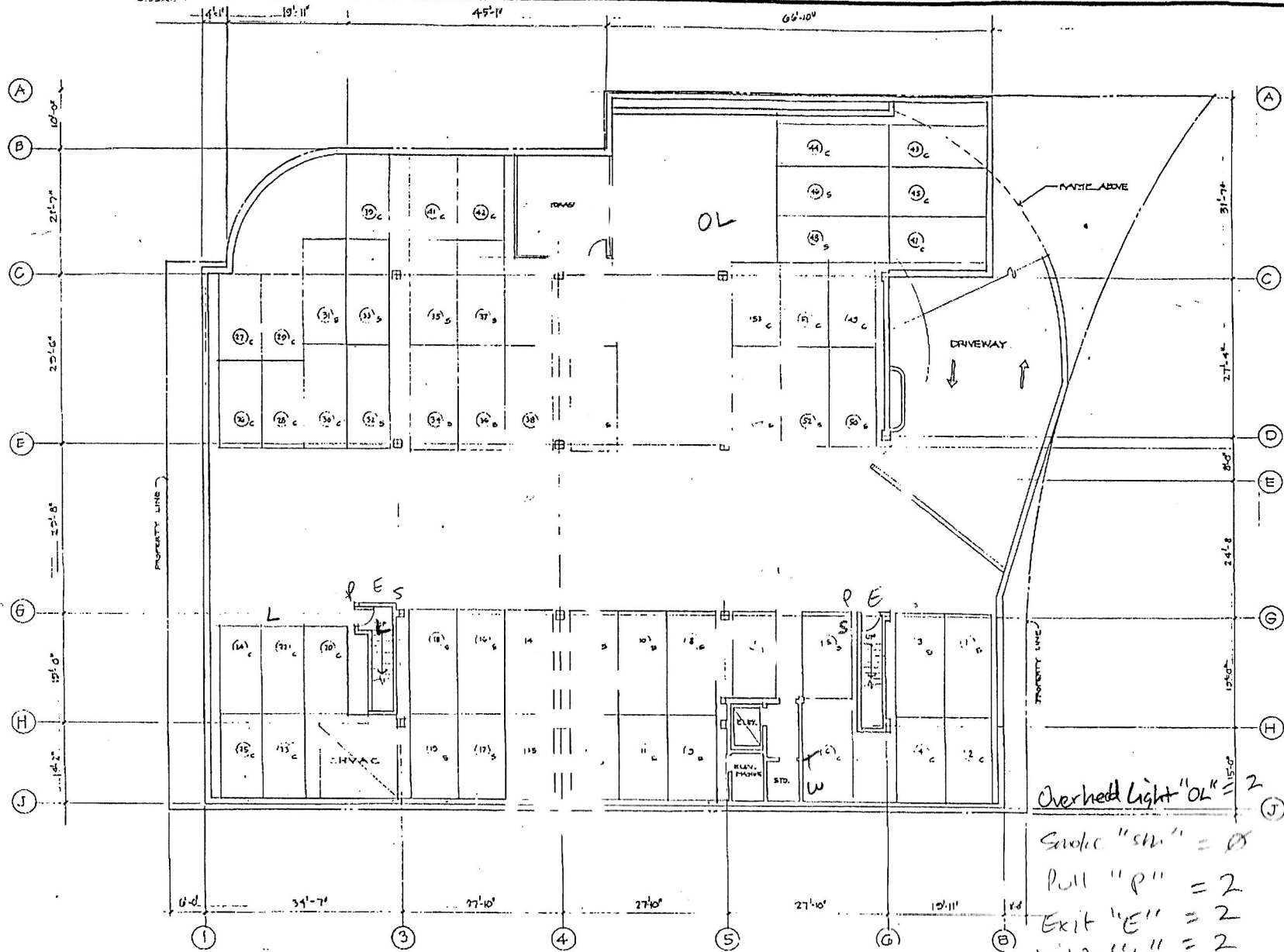


# Parking



① BASEMENT PARKING PLAN

SCALE: 1/8" = 1'-0"

- Overhead Light "OL" = 2
- Stool "ST" = 0
- Pull "P" = 2
- Exit "E" = 2
- Lights "L" = 2
- Chubbflon "S" = 2
- Tamper "T" = 2
- Water "W" = 1

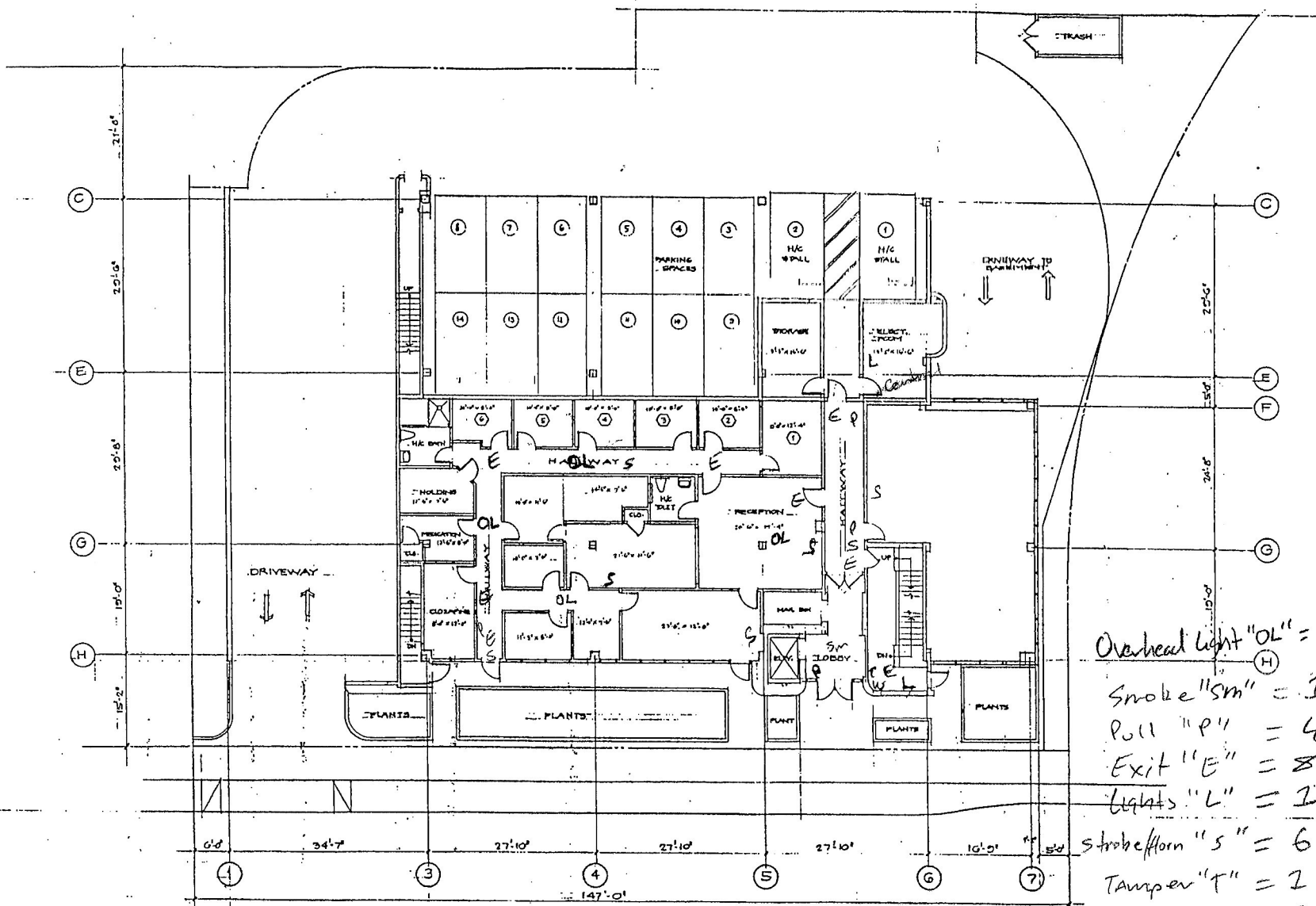
REVISIONS	BY

AS BUILT - THREE STORY OFFICE BLDG.  
 OWNER: UNICOM ENTERPRISES, INC.  
 JOB ADDRESS: 15531 - 15533 SAN RAMON MISSION BLVD.  
 MISSION HILLS, CA.

DATE	1/25/99
BY	LSB
CHKD BY	EPH
DATE	FEB. 1999
SCALE	1/8" = 1'-0"
PROJECT	

LSB  
 Parking

# 1st FLOOR



- Overhead light "OL" = 4
- Smoke "SM" = 2
- Pull "P" = 4
- Exit "E" = 8
- Lights "L" = 1
- Strobe horn "S" = 6
- Tamper "T" = 2
- Water "W" = 2

FIRST FLOOR PLAN SCALE: 1/8" = 1'-0"

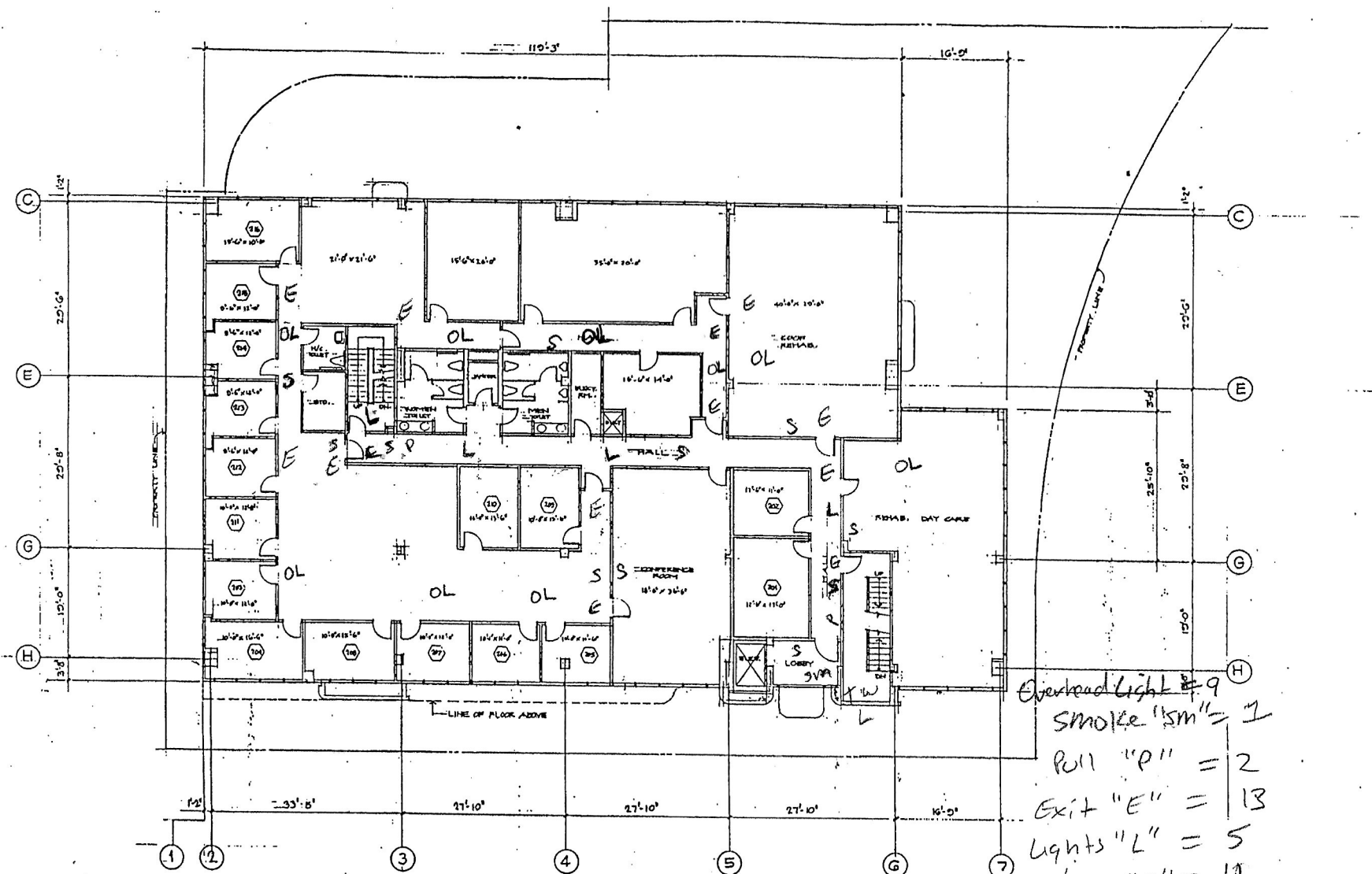
REVISIONS	BY

335 BUILT-THREE STORY OFFICE BLDG.  
 OWNER: UNICOM ENTERPRISES, INC.  
 JOB ADDRESS: 15531-31553D  
 SAN JOSE, CALIFORNIA  
 DRAWN BY: RANDO MISSION BLVD  
 MISSION HILLS, CA

DATE	BY	CHK

Total Devices = 26

# 2nd FLOOR



① SECOND FLOOR PLAN

SCALE: 1/8" = 1'-0"

- Overhead Light "OL" = 9
- Smoke "sm" = 2
- Roll "P" = 2
- Exit "E" = 13
- Lights "L" = 5
- Strobe/Horn "S" = 17
- Tamper "T" = 2
- Water "W" = 1

REVISIONS	BY

AS BUILT - THREE STORY OFFICE BLDG.  
 OWNER: UNICOM ENTERPRISES, INC.  
 JOB ADDRESS: 15531 155th St.  
 SAN FERNANDO MISSION BLDG.  
 MISSION HILLS, CA

DATE	1/26/84
BY	BTM
SCALE	1/8" = 1'-0"
NO.	2

total Devices = 43

