



2550

VICTORIA PARK AVENUE

SUITE 300, TORONTO, ON

**"PLUG & PLAY"
SUBLEASE**

**FULL FLOOR OF
23,996 SQ. FT.**

FOR MORE INFORMATION, PLEASE CONTACT:

TONY GILL*

Senior Vice President
T +1 416 495 6261
tony.gill@cbre.com

REID BETHELL

Sales Representative
T +1 416 495 6242
reid.bethell@cbre.com

* Sales Representative

CBRE

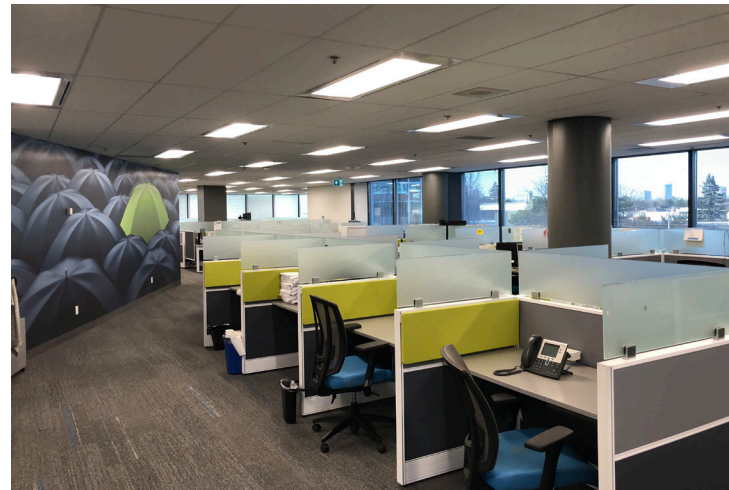
2550

VICTORIA PARK AVENUE

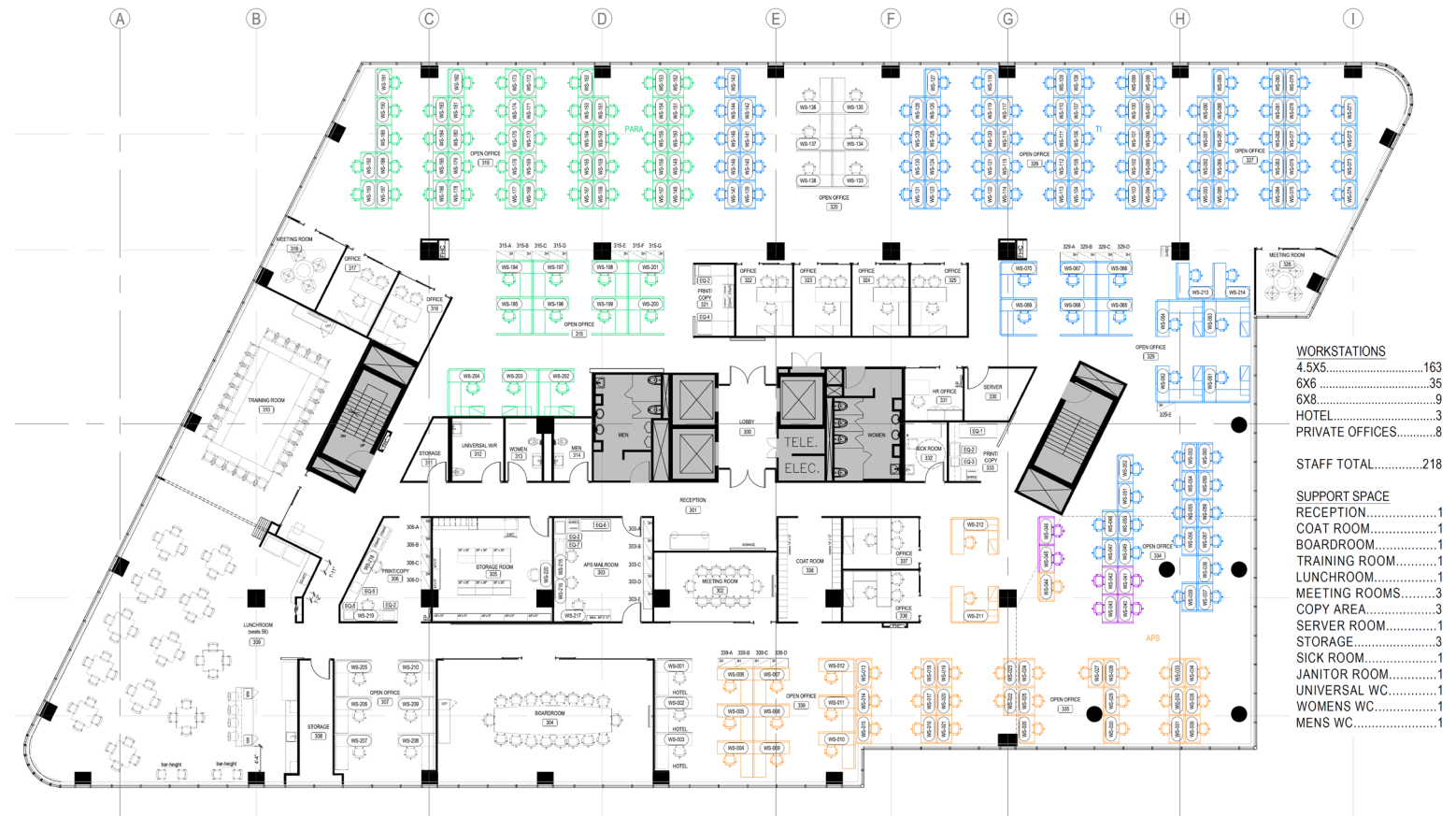
SUITE 300, TORONTO, ON

PROPERTY DETAILS

AVAILABLE SPACE:	Suite 300: 23,996 sq. ft.	RENTAL RATE:	Negotiable
TERM:	May 30, 2028	ADDITIONAL RENT:	\$17.24 per sq. ft. (2020)
POSSESSION:	Immediate	PARKING:	3/1,000 sq. ft.



FULL FLOOR "PLUG & PLAY" SUBLEASE



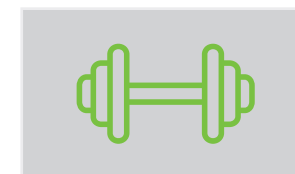
Furniture is available



Shuttle service to Fairview Mall and Don Mills subway station



24/7 on-site security



On-site fitness centre and conference centre



Universal washroom in the space



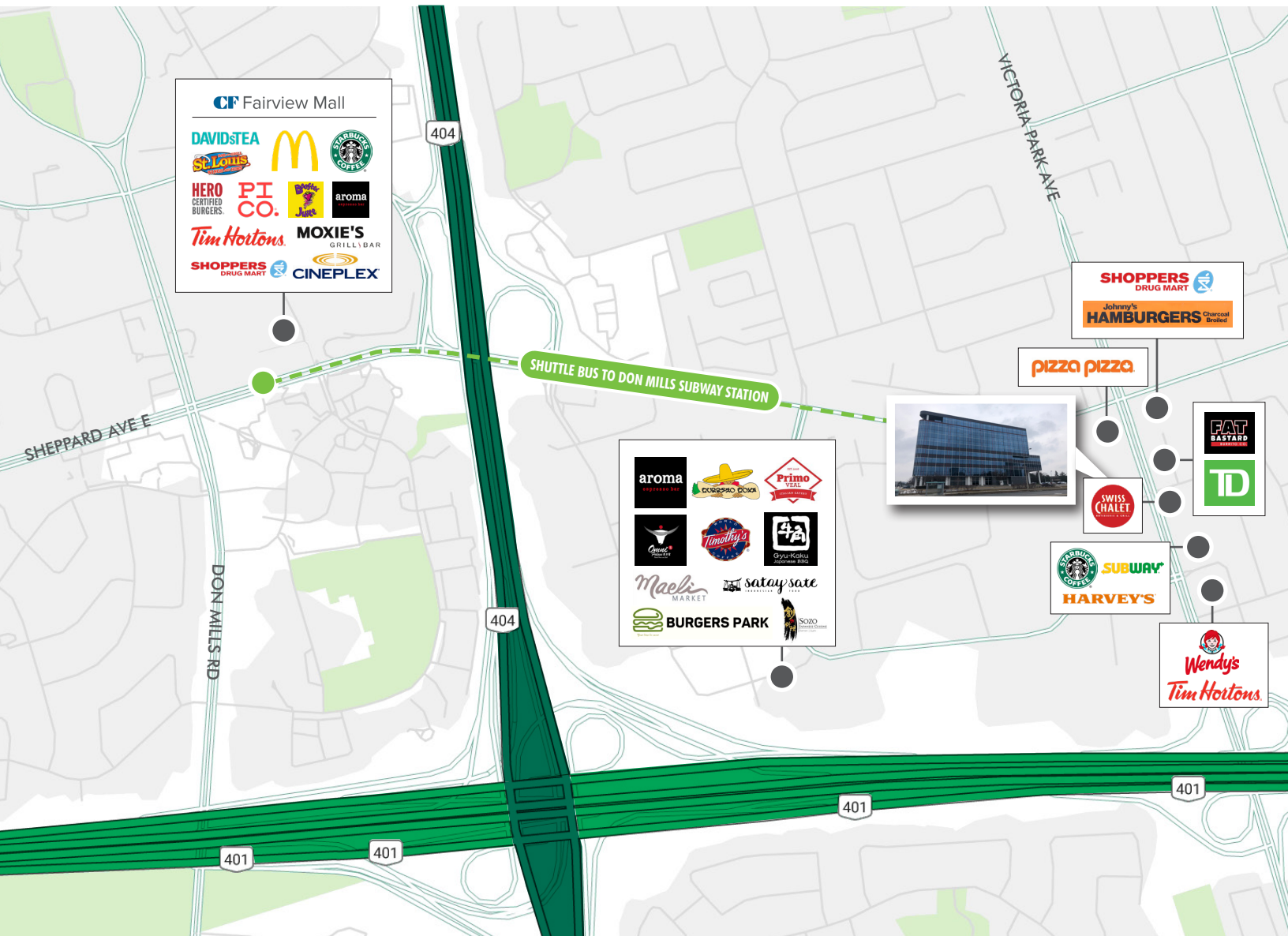
Close proximity to Highway 401 and 404

2550

VICTORIA PARK AVENUE

SUITE 300, TORONTO, ON

“PLUG & PLAY”
SUBLEASE



FOR MORE INFORMATION, PLEASE CONTACT:

TONY GILL*

Senior Vice President
T +1 416 495 6261
tony.gill@cbre.com

REID BETHELL

Sales Representative
T +1 416 495 6242
reid.bethell@cbre.com

CBRE Limited | 2005 Sheppard Avenue East, Suite 800 | Toronto, ON M2J 5B4 | www.cbre.ca | *Sales Representative

This disclaimer shall apply to CBRE Limited, Brokerage, and to all other divisions of the Corporation ("CBRE"). The information set out herein (the "Information") has not been verified by CBRE, and CBRE does not represent, warrant or guarantee the accuracy, correctness and completeness of the Information. CBRE does not accept or assume any responsibility or liability, direct or consequential, for the Information or the recipient's reliance upon the Information. The recipient of the Information should take such steps as the recipient may deem necessary to verify the Information prior to placing any reliance upon the Information. The Information may change and any property described in the Information may be withdrawn from the market at any time without notice or obligation to the recipient from CBRE. Mapping Sources: Canadian Mapping Services canadamapping@cbre.com; MapPoint, DMTI Spatial, Envirionics Analytics, Microsoft Bing, Google Earth

CBRE