

**AVAILABLE FOR LEASE**

**EAST END CENTRE**  
**22 East End Centre**  
Wilkes-Barre, Pennsylvania

**NICOLE A. KOVALSKI**  
**Property & Leasing Manager**  
Nicole@joeamatoproperties.com  
Office: 570-287-5343

272 East End Centre • Wilkes-Barre, PA 18702 • T: 570.287.5343

Information is obtained from sources believed to be reliable; however, it is subject to errors, omissions, changes in price, terms, prior sale, or withdrawal without notice.

[www.joeamatoproperties.com](http://www.joeamatoproperties.com)





# East End Centre

Wilkes-Barre, Pennsylvania

**East End Centre**, a vibrant open-air shopping destination in the heart of Wilkes-Barre Township, offers over 300,000 SF of prime retail and office space. Since joining the Amato Properties portfolio in 2014, the Centre has evolved into a dynamic hub of local and national tenants, including Gabe's, Red Lobster, Dollar Tree, United Auto Supply, and Cosmo Prof. Local favorites such as Serpico Pizza, Food Trail Indian Cuisine, Allure Salon Group, and KISS Theatre Company add a unique flavor to the tenant mix. Strategically positioned in the region's busiest retail corridor—boasting over 2 million SF of retail—the Centre benefits from high visibility and easy access from both Kidder Street (SR 309) and Mundy Street. The location attracts a steady flow of visitors, fueled by nearby attractions like Mohegan Sun Arena, Mohegan Sun Casino, local colleges, and regional employers.

With ongoing renovations and space available for retail, office, and service-oriented businesses, East End Centre is primed for growth. Opportunities range from small shop suites to junior anchor and anchor spaces, all offered with aggressive rental rates and low NNN charges. Located adjacent to the Wyoming Valley Mall and surrounded by a growing mix of shopping, dining, and entertainment, the Centre is ideally positioned to support tenant success. Amato Properties delivers more than space—we provide hands-on support from development through long-term management. Join a thriving community of tenants and take advantage of the energy and visibility East End Centre has to offer. Call us today to explore leasing opportunities.

[Click Here To View  
Leasing Website](#)

## PROPERTY FEATURES:

- Tenant Controlled Central HVAC
- LCTA Daily Route
- Acoustical Drop Ceilings with Recessed Lighting
- Ceiling Height: 10'
- 2 ADA Compliant Restrooms with Roll-In Showers
- Pylon Sign Space
- 36,000+ VPD (Kidder & Mundy Streets)
- Easy access from I81, SR 390, & SR 315
- Entrances from Kidder & Mundy Streets
- Onsite management office

**NICOLE A. KOVALSKI**  
**Property & Leasing Manager**

Nicole@joeamatoproperties.com  
Office: 570-287-5343

272 East End Centre • Wilkes-Barre, PA 18702 • T: 570.287.5343

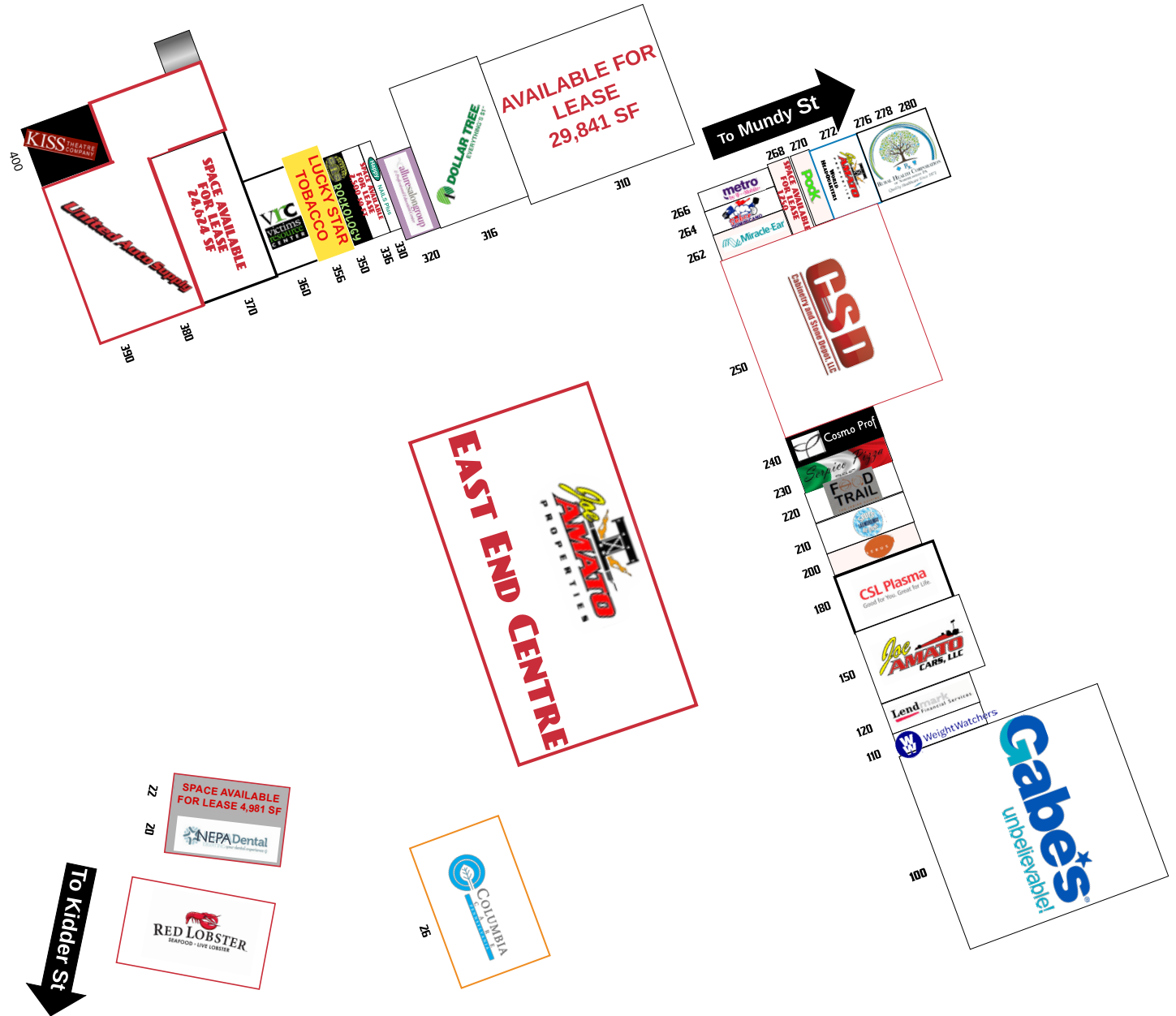
Information is obtained from sources believed to be reliable; however, it is subject to errors, omissions, changes in price, terms, prior sale, or withdrawal without notice.

[www.joeamatoproperties.com](http://www.joeamatoproperties.com)



# JOIN GABE'S, DOLLAR TREE, AND RED LOBSTER. SMALL, JUNIOR ANCHOR AND ANCHOR POSITIONS AVAILABLE.

SUITE	TENANT	SIZE (SF)
100	Gabes	50,000
110	WeightWatchers	1,608
120	Lendmark Finacial	2,400
150	Joe Amato Cars	12,766
180	CSL Plasma	9,988
200	Aerus	3,500
210	Spots Be Gone	3,000
220	Food Trail	1,500
230	Serpico Pizza	2,500
240	CosmoProf	3,200
250	CSD	30,250
262	MiracleEar	1,155
264	Sabor Dominicano	1,502
266	Metro	1,170
<b>268</b>	<b>Available</b>	<b>1,250</b>
270	Podk Taxi & Limo	1,050
272-74	Joe Amato Properties	2,350
276-80	Rural Health Corp.	3,750
<b>310</b>	<b>Available</b>	<b>29,841</b>
316	Dollar Tree	14,400
320	Allure Salon	4,840
330	Happy Nails Plus	1,500
<b>336</b>	<b>Available</b>	<b>2,500</b>
350	Rockology	3,400
356	Lucky Star Tobacco	1,559
360	VRC	6,000
<b>370</b>	<b>Available</b>	<b>24,624</b>
380-90	United Auto Supply	41,488
400	Kiss Theater	12,816
26	Columbia Care	9,950
<b>22</b>	<b>Available</b>	<b>4,981</b>
20	NEPA Dental	2,340
Pad	Red Lobster	9,926



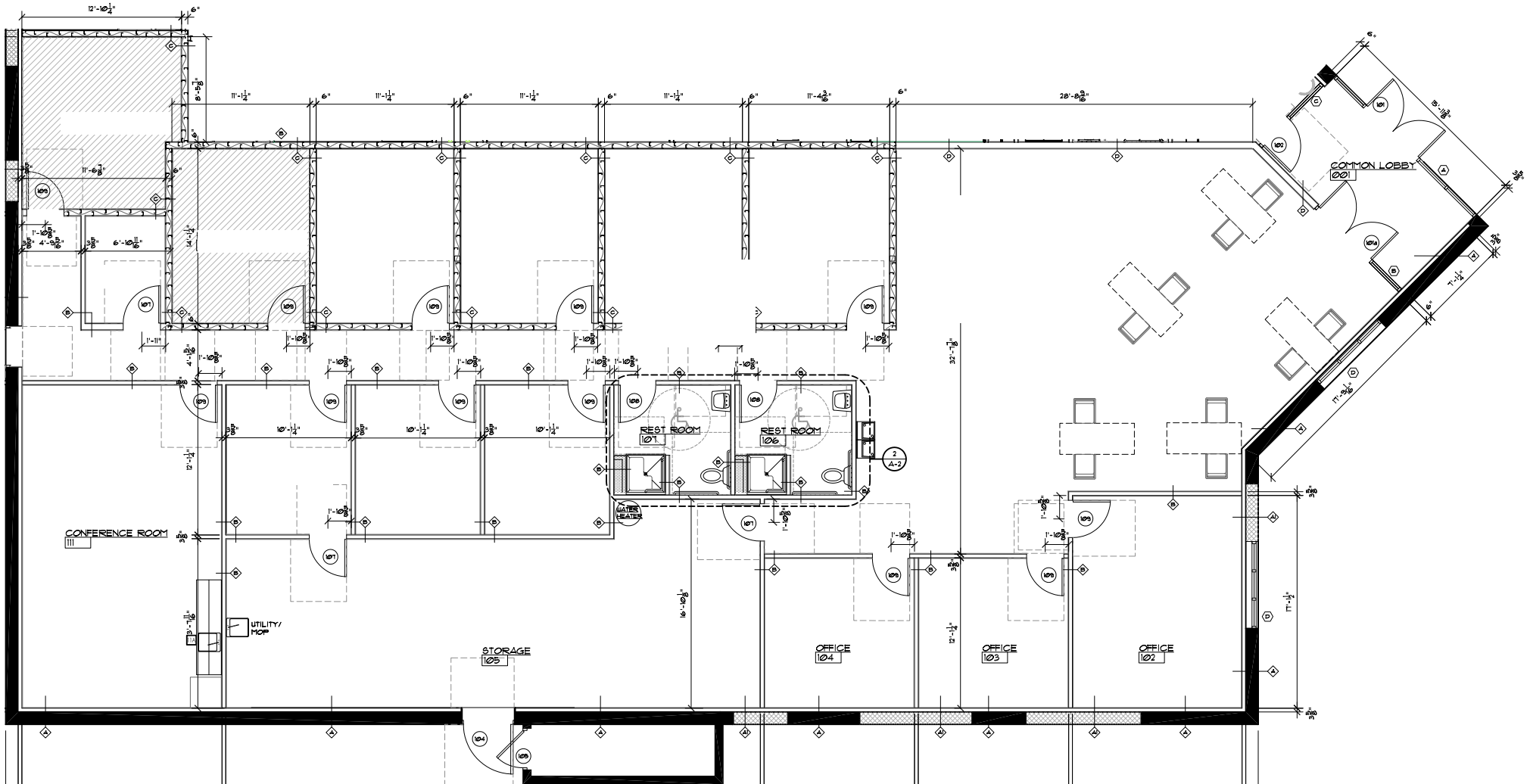
272 East End Centre • Wilkes-Barre, PA 18702 • T: 570.287.5343

[www.joamatoproperties.com](http://www.joamatoproperties.com)

Information is obtained from sources believed to be reliable; however, it is subject to errors, omissions, changes in price, terms, prior sale, or withdrawal without notice.

# AVAILABLE UNIT: 2,000 TO 4,981 (DIVISIBLE)

2000 to 4,981 (divisible) square-foot space. Turnkey medical facility in free standing building located at the Shopping Center entrance. Former use as a Sleep Center. Acoustical drop ceiling with recessed lighting, wall to wall carpet in office areas, separate conference room and warehouse/storage room, 2 fully compliant ADA restrooms with showers, Tenant controlled Central HVAC systems, Pylon Sign Space available. In the heart of the retail shopping district of Wilkes Barre, PA, near the Wyoming Valley Mall and Mohegan Sun Arena. Less than one mile to I 81 and 5 miles from I 476 (PA Turnpike).

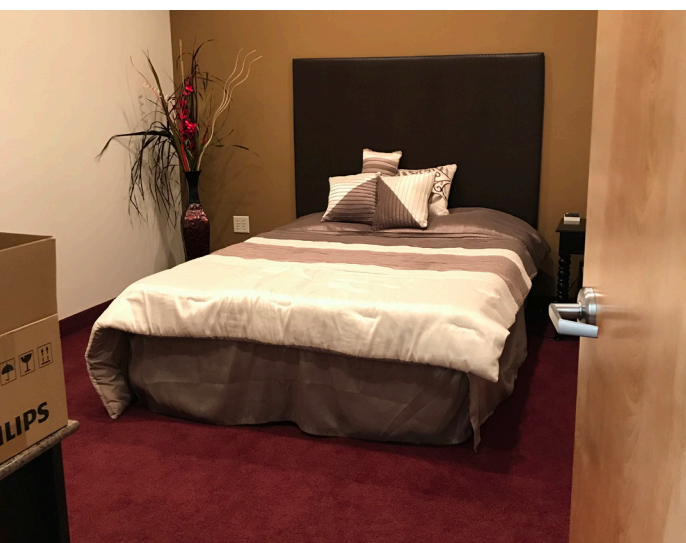


272 East End Centre • Wilkes-Barre, PA 18702 • T: 570.287.5343

[www.joamatoproperties.com](http://www.joamatoproperties.com)

Information is obtained from sources believed to be reliable; however, it is subject to errors, omissions, changes in price, terms, prior sale, or withdrawal without notice.





# LOCATED IN THE CENTER OF WILKES BARRE TOWNSHIP'S RETAIL CORRIDOR

RTE 309 (45,000 VPD)

I-81 (60,000 VPD)

**Wilkes Barre Area Highschool**  
2,470 Students Enrolled

**MOHEGAN**  
PENNSYLVANIA

**Commonwealth Health**



**Geisinger**



**EAST END CENTRE**



**WYOMING VALLEY MALL**  
3.4 Million Annual Visits

ASHLEY **DAVID'S** BRIDAL Grotto Pizza  
JCPenney Firestone  
L A Z BOY Planet Smoothie

**KING'S COLLEGE**  
TRANSFORMATION. COMMUNITY. HOLY CROSS.  
1,900+ Students Enrolled

**SPRING STREET PLAZA**  
Placer.Ai Top Performers (Nationwide)

**Raymour & Flanigan**  
Top 39% Middle 50%

**VA** U.S. Department of Veterans Affairs



**Wilkes University**  
5,200+ Students Enrolled

**ARENA HUB PLAZA**  
Placer.Ai Top Performers (Nationwide)

**LOWE'S** Top 30% **DICK'S** Top 35% **FIVE BELOW** Top 5% **BARNES & NOBLE** Top 30% **DOLLAR TREE** Top 6%

**Michael's** Top 36% **TJ-maxx** Top 12% **STAPLES** Top 25% **PETSMART** Top 38%

**WILKES-BARRE TWP MARKETPLACE**  
Placer.Ai Top Performers (Nationwide)

**Walmart** Top 5% **Pocky** Top 10% **Red Robin** Top 36%

**Starbucks** Top 11% **FINE WINE & GOOD SPIRITS** Top 9% **PET SUPPLIES PLUS** Top 10%

**WILKES-BARRE COMMONS**  
Placer.Ai Top Performers (Nationwide)

**TARGET** Top 18% **petco** Top 14% **Marshalls** Top 39%

**ROSS** Top 31% **Panera** Top 11% **BOB'S** Top 16%

**HIGHLAND CROSSING**  
Placer.Ai Top Performers (Nationwide)

**sam's club** Top 16% **KOHL'S** Top 14%

**planet fitness** Middle 50% **TEXAS** Middle 50%



272 East End Centre • Wilkes-Barre, PA 18702 • T: 570.287.5343

[www.joamatoproperties.com](http://www.joamatoproperties.com)

Information is obtained from sources believed to be reliable; however, it is subject to errors, omissions, changes in price, terms, prior sale, or withdrawal without notice.

# TRADE AREA: GEOFENCING SURVEY

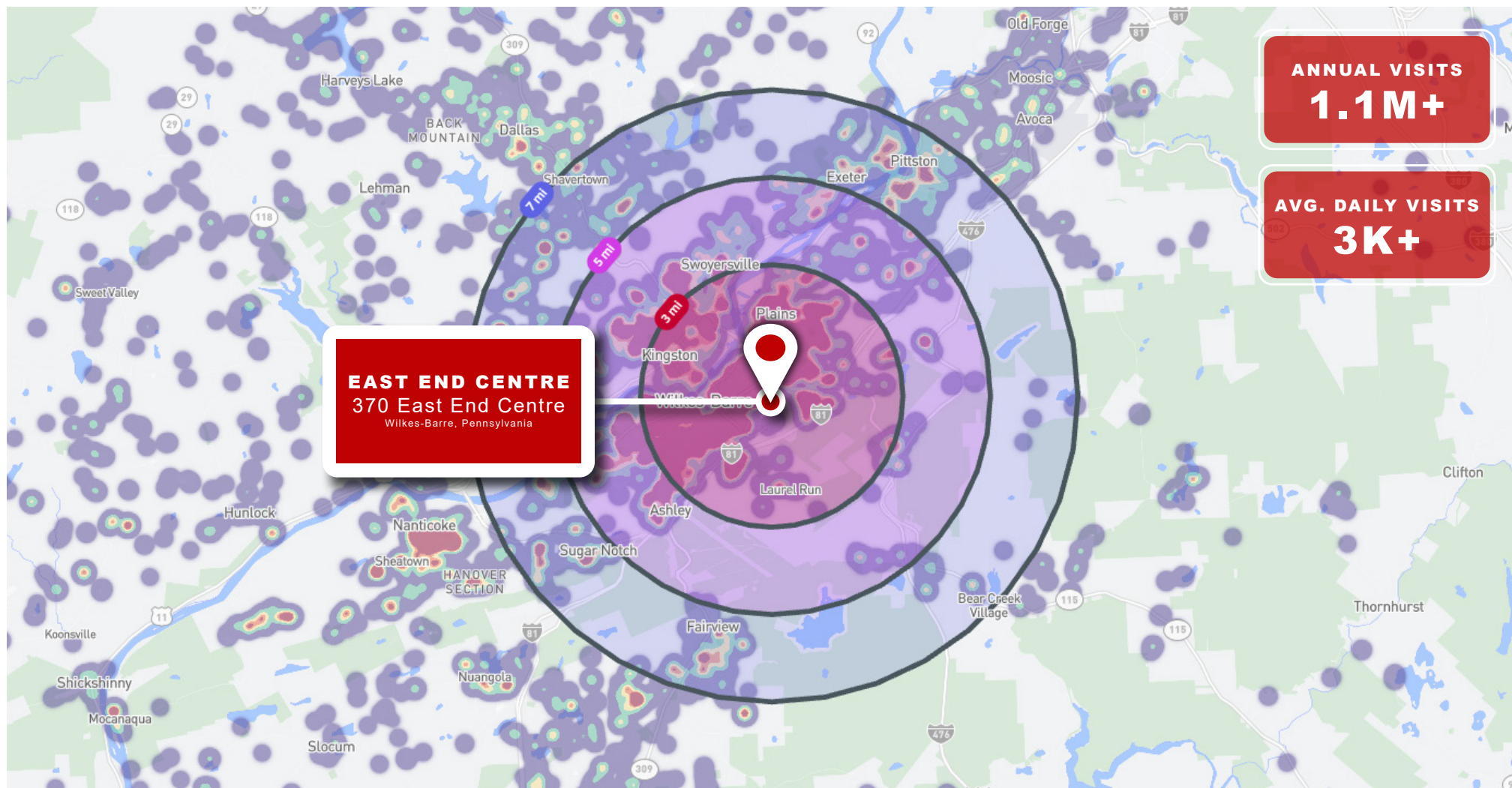


**65%**

OF THE VISITS OF EAST END CENTRE ARE COMING FROM WITHIN 3 MILES OF THE SITE

**75%**

OF THE VISITS OF EAST END CENTRE ARE COMING FROM WITHIN 7 MILES OF THE SITE

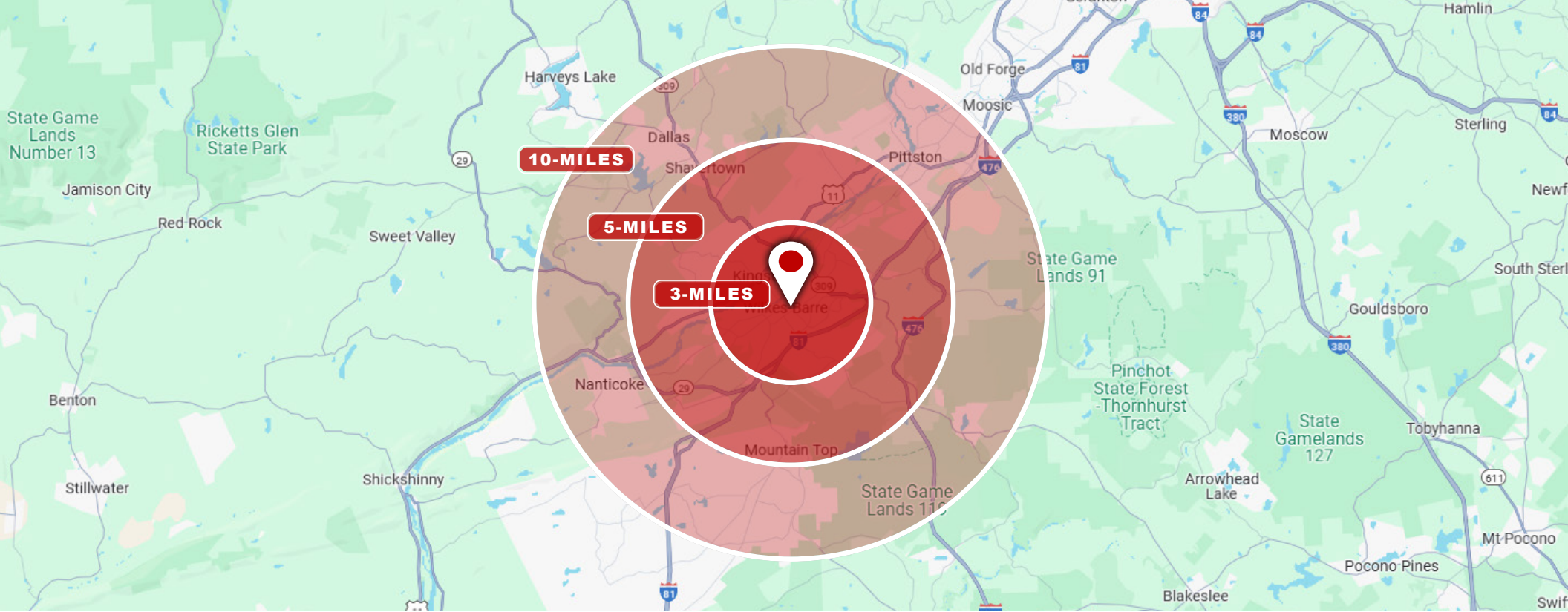


272 East End Centre • Wilkes-Barre, PA 18702 • T: 570.287.5343

[www.joamatoproperties.com](http://www.joamatoproperties.com)

Information is obtained from sources believed to be reliable; however, it is subject to errors, omissions, changes in price, terms, prior sale, or withdrawal without notice.





<b>POPULATION</b>	<b>1-MILE</b>	<b>3-MILE</b>	<b>5-MILES</b>	<b>10-MILES</b>
2024 Population	8,027	69,444	117,613	219,041
Median Age	38.6	38.8	40.6	42.3
<b>HOUSEHOLDS</b>	<b>1-MILE</b>	<b>3-MILE</b>	<b>5-MILES</b>	<b>10-MILES</b>
2024 Households	3,317	28,916	50,221	92,143
Avg Household Size	2.3	2.2	2.2	2.2
<b>HOUSEHOLD INCOME</b>	<b>1-MILE</b>	<b>3-MILE</b>	<b>5-MILES</b>	<b>10-MILES</b>
2024 Average HH Income	\$56,679	\$64,956	\$68,938	\$76,753
2024 Median HH Income	\$43,467	\$50,298	\$53,220	\$59,772
<b>EMPLOYMENT</b>	<b>1-MILE</b>	<b>3-MILE</b>	<b>5-MILES</b>	<b>10-MILES</b>
Daytime Employees	10,627	55,010	70,927	111,030



272 East End Centre • Wilkes-Barre, PA 18702 • T: 570.287.5343

[www.joamatoproperties.com](http://www.joamatoproperties.com)

Information is obtained from sources believed to be reliable; however, it is subject to errors, omissions, changes in price, terms, prior sale, or withdrawal without notice.



**AVAILABLE FOR LEASE**

**EAST END CENTRE**  
**22 East End Centre**  
Wilkes-Barre, Pennsylvania

**NICOLE A.KOVALSKI**  
**Property & Leasing Manager**  
Nicole@joeamatoproperties.com  
Office: 570-287-5343



272 East End Centre • Wilkes-Barre, PA 18702 • T: 570.287.5343

Information is obtained from sources believed to be reliable; however, it is subject to errors, omissions, changes in price, terms, prior sale, or withdrawal without notice.

[www.joeamatoproperties.com](http://www.joeamatoproperties.com)