

IMMEDIATELY AVAILABLE FOR LEASE

415 2nd Street, NE
Washington, DC 20002

- Newly renovated building
- One block to Union Station
- New space
- New shared conference center
- 3,216 S.F.
- \$49.50 per S.F., full service
- 3 to 10-year lease term
- Nice view of U.S. Capitol

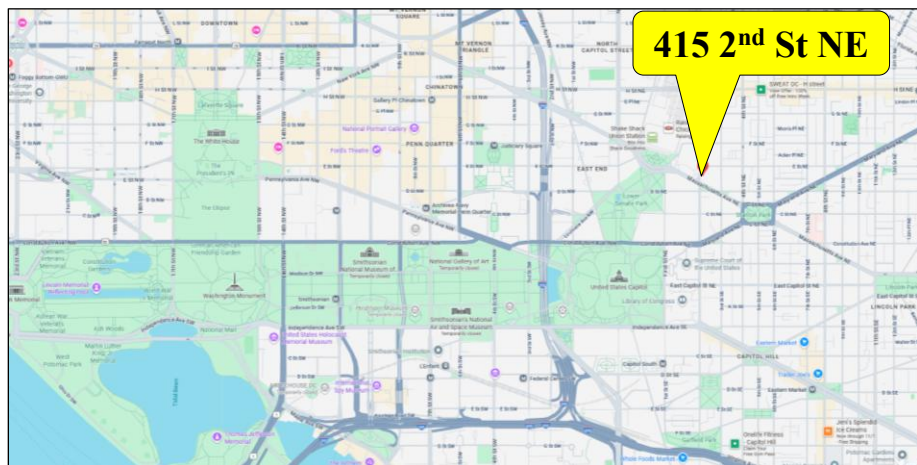


For more details or to arrange
a tour please contact:

301.961.9696

Bill Montrose – Ext. 203
wmontrose@amrcommercial.com

Sam Farnum – Ext. 216
sfarnum@amrcommercial.com



ALEXANDER, MONTROSE, RITTENBERG
Commercial Real Estate Brokerage
Est. 1994

Celebrating
31
Years
1994-2025

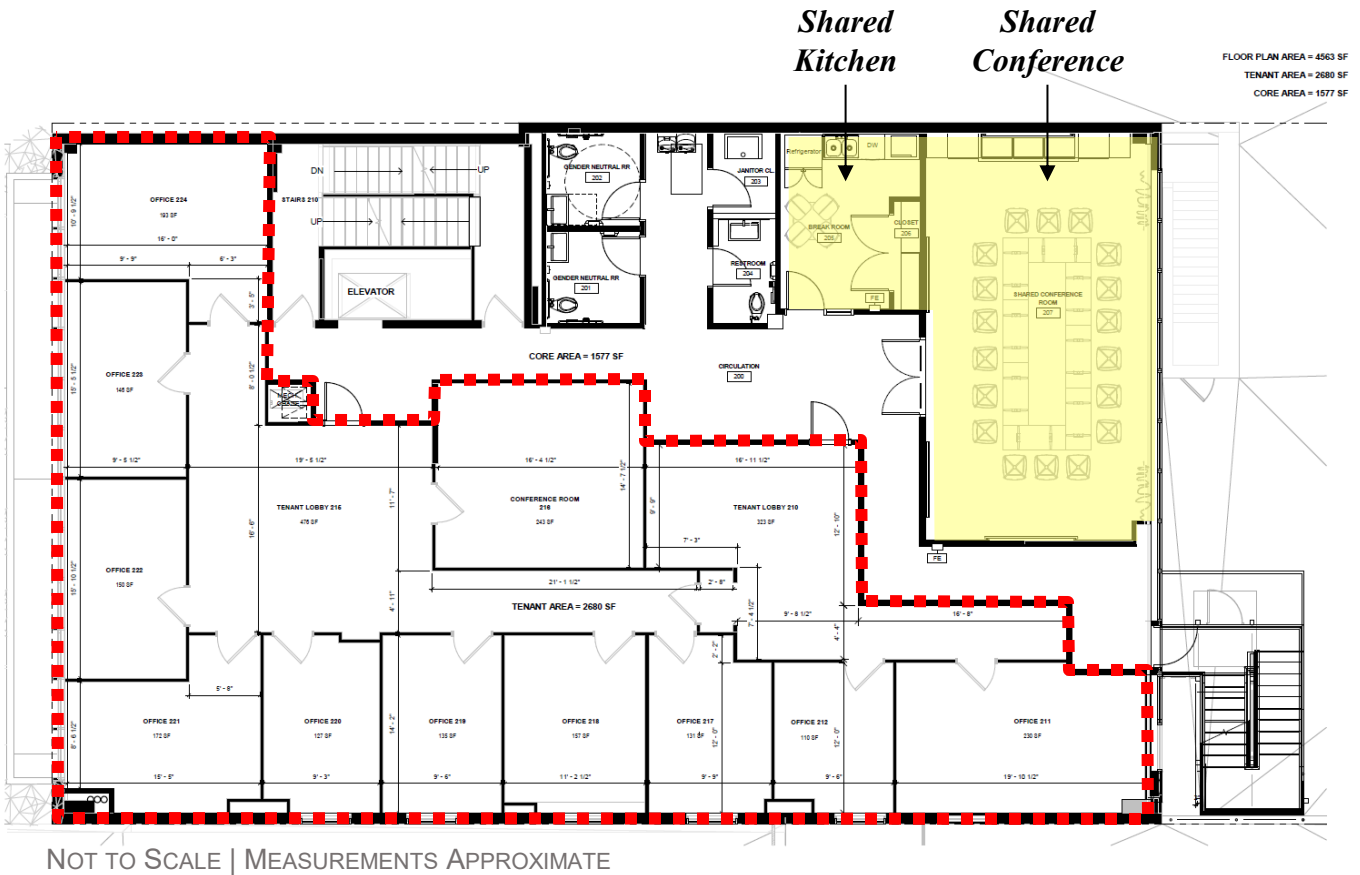
Although all information is furnished regarding for sale, rental or financing is from sources we deem reliable, such information has not been verified and no express representation is made nor is any to be implied as to the accuracy thereof, and it is submitted subject to errors, omissions, changes of price, rental or other conditions, prior sale, lease or financing or withdrawal without notice.

4849 Rugby Avenue ♦ Suite 200 ♦ Bethesda, Maryland 20814 ♦ 301.961.9696 ♦ Fax 301.656.7551 ♦ www.amrcommercial.com

415 2nd Street, NE Washington, DC 20002

2nd Floor

Suite 200
3,216+/-S.F.



← 2nd Street NE →



Although all information is furnished regarding for sale, rental or financing is from sources we deem reliable, such information has not been verified and no express representation is made nor is any to be implied as to the accuracy thereof, and it is submitted subject to errors, omissions, changes of price, rental or other conditions, prior sale, lease or financing or withdrawal without notice.

4849 Rugby Avenue ♦ Suite 200 ♦ Bethesda, Maryland 20814 ♦ 301.961.9696 ♦ Fax 301.656.7551 ♦ www.amrcommercial.com

*415 2nd Street, NE
Washington, DC 20002*

