



AVAILABLE FOR LEASE

±2,086 -14,922 SF OF INDUSTRIAL SPACES

1813 RUTAN DRIVE, LIVERMORE, CA 94551

LOCAL EXPERTISE. INTERNATIONAL REACH. WORLD CLASS.

Sean Offers, SIOR

Principal
soffers@lee-associates.com
925.737.4159
LIC NO 01858116

RUTAN DRIVE



PROPERTY HIGHLIGHTS



±14,992 SF Light Industrial Building –
Available as a Whole or in 3 Individual/Combined Units



Unit A: ±8,078 SF
Unit B: ± 4,828 SF
Unit C: ± 2,086 SF



Fully Sprinklered



16' Clear Height



Gated Secure Yard Available



Parking 3/1000 SF



Close proximity to I-580



Contact Broker for pricing

1813
RUTAN DRIVE

Unit A: ±8,078 SF

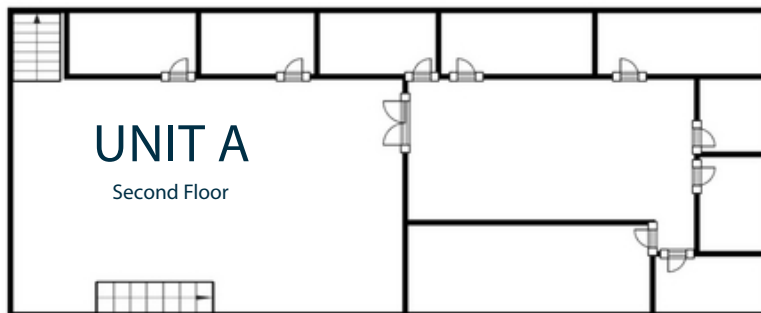
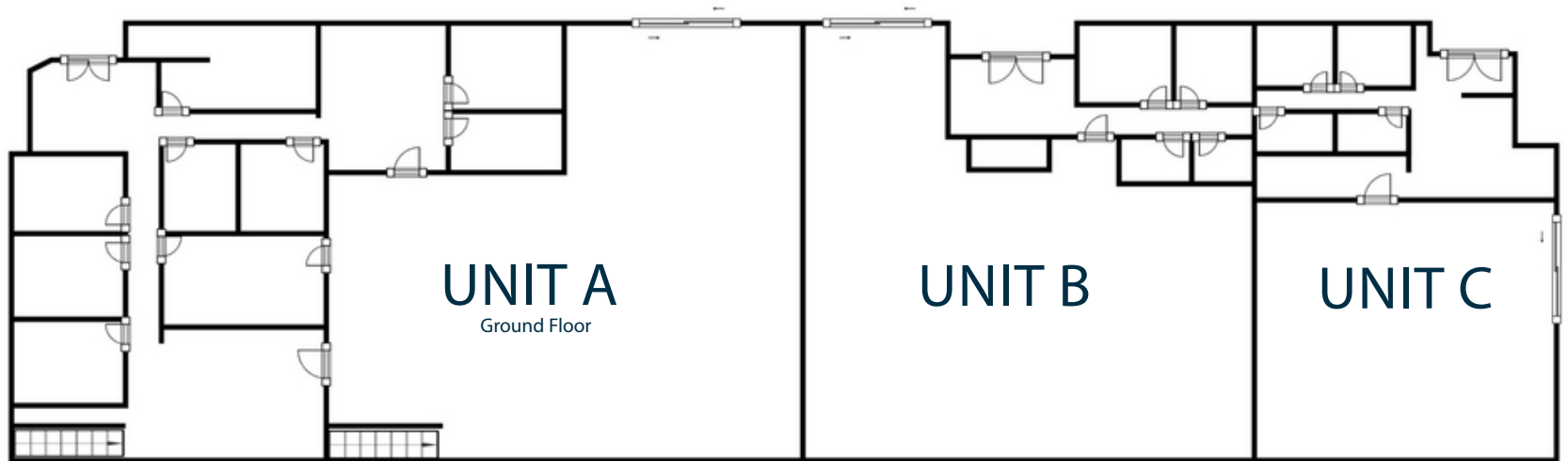
- ±3,042 SF Office includes: reception, several private offices, conference room & break room
- Second floor includes; several private offices and two (2) training areas
- Bonus built out and conditioned mezzanine
- Two (2) restrooms
- 100% HVAC
- Power 800 Amps (Tenant to Verify)
- One (1) 12'X12' Grade level door

Unit B: ± 4,828 SF

- Reception area with three (3) private offices
- One (1) Restroom
- Power: 400 Amps/480 V (Tenant to verify)
- One (1) 12'X12' Grade level door

Unit C: ± 2,086 SF

- Open office, four (4) private offices
- One (1) Restroom
- Power: 200 Amps (Tenant to verify)
- One (1) 12'X12' Grade level door



*FLOORPLAN NOT TO SCALE

FOR LEASE

±2,086 -14,922 SF OF INDUSTRIAL SPACES

1813 RUTAN DRIVE, LIVERMORE, CA 94551

Sean Offers, SIOR

Principal

soffers@lee-associates.com

925.737.4159

LIC NO 01858116

All information furnished regarding property for sale, rental or financing is from sources deemed reliable, but no warranty or representation is made to the accuracy thereof and same is submitted to errors, omissions, change of price, rental or other conditions prior to sale, lease or financing or withdrawal without notice. No liability of any kind is to be imposed on the broker herein.

LEE & ASSOCIATES® EAST BAY, INC. | CORP. ID 01194869 | 5000 PLEASANTON AVE, SUITE 220, PLEASANTON, CA 94566

1813
RUTAN DRIVE