

FOR LEASE



10645 - 74th Street SE, Unit 1120, Calgary, AB

7,500 square feet



Drive-in
Loading



Dedicated
Yard



Quick Access to
Glenmore & Stoney Trail

JON C. MOOK, SIOR
PRESIDENT, MANAGING DIRECTOR
C: 403-616-5239
jmook@lee-associates.com

ELIAS TSOUGRIANIS
SALES & LEASING ASSOCIATE
c: 403-680-4875
etsougrianis@lee-associates.com

117, 4950 - 106th Avenue SE | Calgary, AB T2C 5E9 | lee-associates.com/calgary

PROPERTY DETAILS

DISTRICT:

Point Trotter

LEGAL DESCRIPTION:

Condominium Plan 2010375, Unit 2

ZONING:

IG (Industrial General)

AVAILABLE AREA:

Main floor office: 1,498 sq. ft.

Shop: 6,002 sq. ft.

Total: 7,500 sq. ft.

NET LEASE RATE:

\$15.00 per sq. ft. per annum

OPERATING COSTS:

\$7.96 per sq. ft. per annum (for 2025)

YEAR BUILT:

2019

AVAILABLE:

Immediate

MECHANICAL:

2,400 cfm HRV unit

HEATING:

Radiant tube heaters and overhead unit heaters

CEILING HEIGHT:

24' clear

LOADING:

2 - 14' x 14' drive-in doors

POWER:

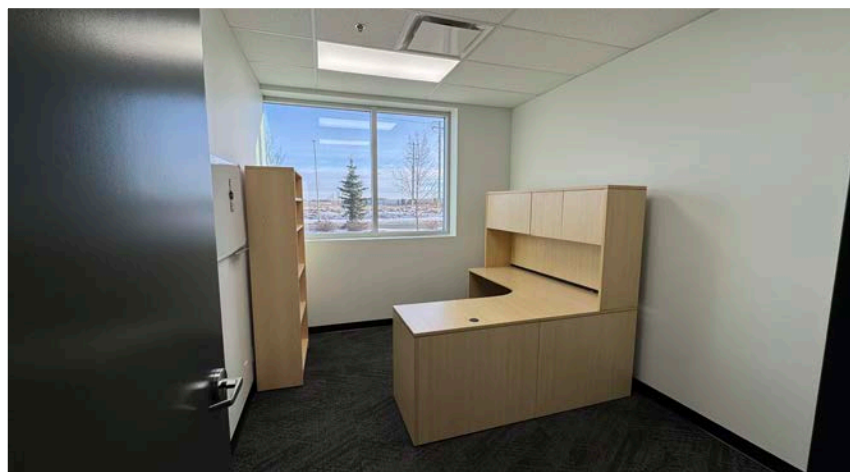
200 amp, 600 volt, 3 phase service

LIGHTING:

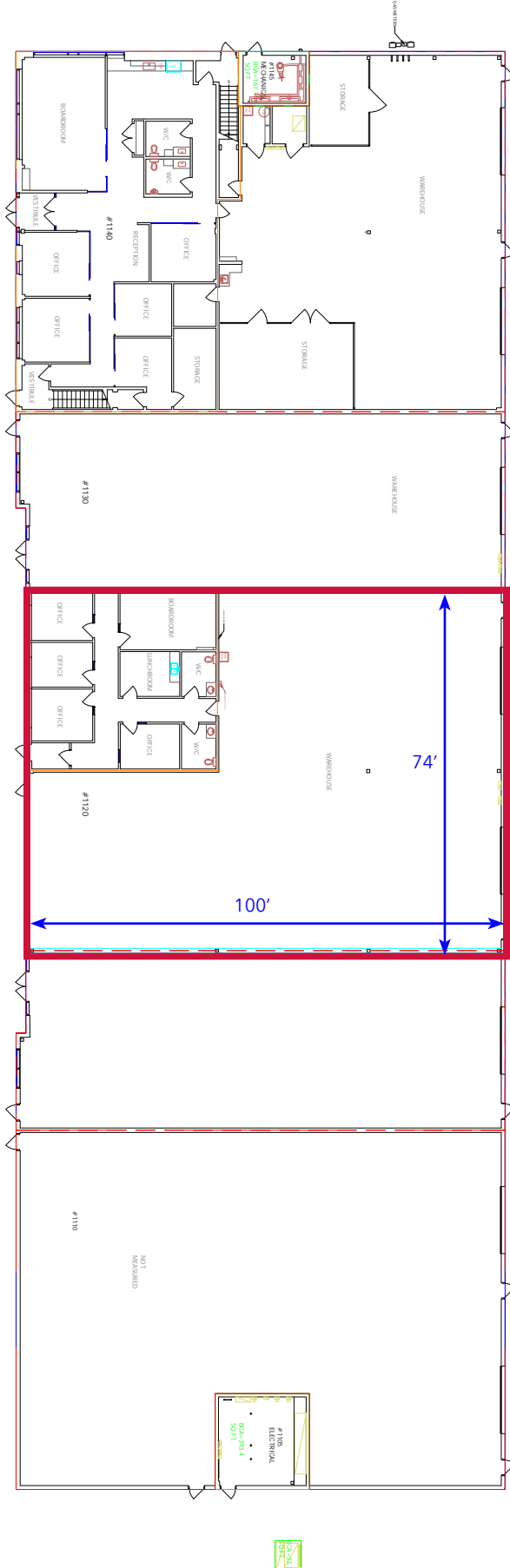
LED

COMMENTS:

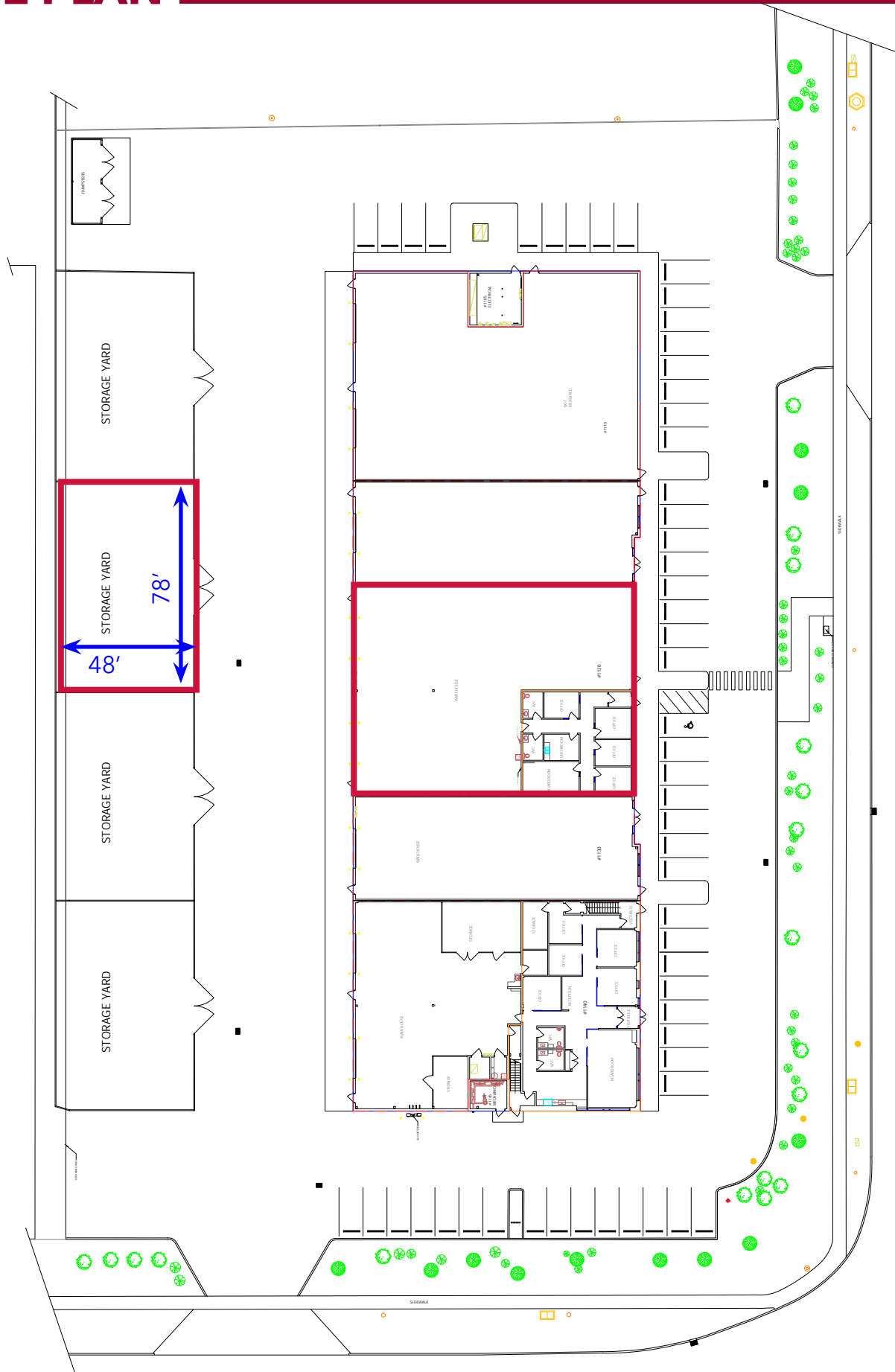
- » ESFR Sprinklered
- » 3,745 sq. ft. designated yard area
- » Recently Epoxied Shop floors
- » Quick access to Glenmore & Stoney Trail



FLOOR PLAN

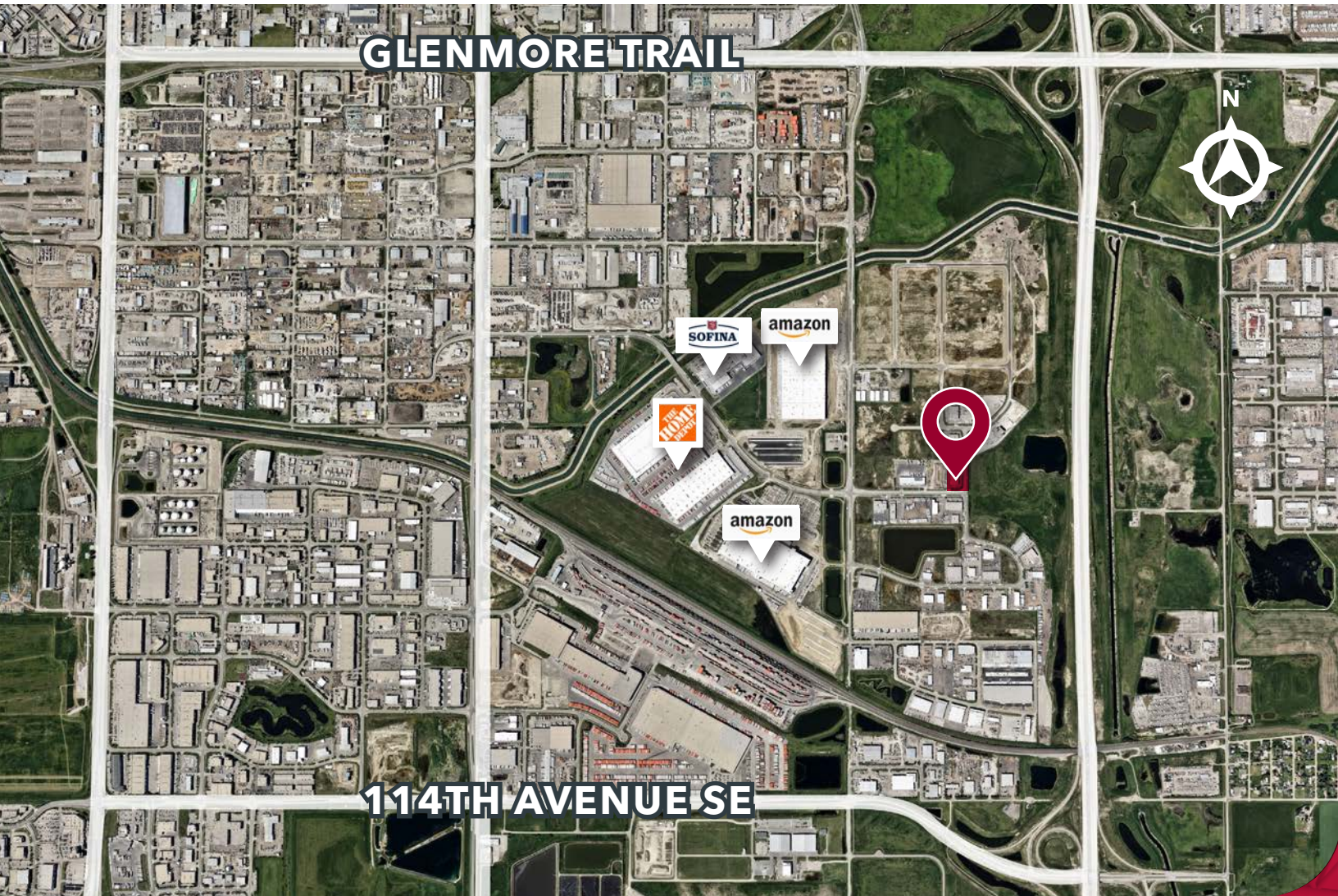


SITE PLAN



74 ST SE

LOCATION



CONTACT US



JON C. MOOK, SIOR
PRESIDENT, MANAGING DIRECTOR
C: 403-616-5239
jmook@lee-associates.com



ELIAS TSOUGRIANIS
SALES & LEASING ASSOCIATE
C: 403-680-487
etsougrianis@lee-associates.com

This brochure is for INFORMATION PURPOSES ONLY. There are no representations or warranties provided with respect to the information contained herein. Any prospective purchaser should take whatever steps they deem necessary or advisable to verify the accuracy or completeness of any information contained herein before relying on any such information. Prospective purchasers are cautioned to conduct their own due diligence.

117, 4950 - 106th Avenue SE | Calgary, AB T2C 5E9
lee-associates.com/calgary

 **LEE &
ASSOCIATES**

COMMERCIAL REAL ESTATE SERVICES