

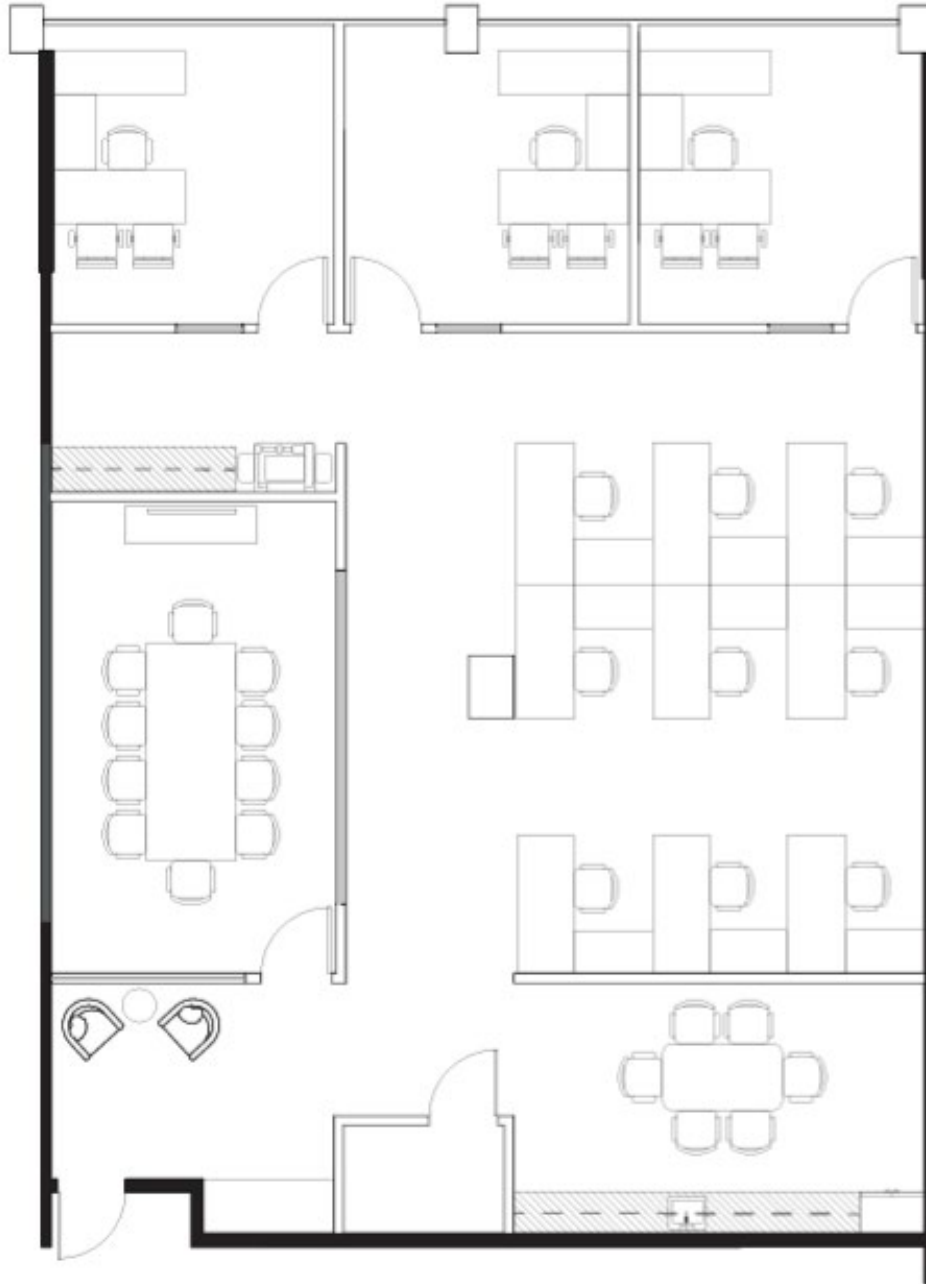
1601-1649 NW 136th Ave. Sunrise, FL

# SPEC SUITE E-205

## 2,509 SF



**SAWGRASS**  
TECHNOLOGY PARK



FOR MORE INFORMATION, PLEASE CONTACT

### DEANNA LOBINSKY

Executive Director  
+1 954 377 0489  
deanna.lobinsky@cushwake.com

### CHASE KULP

Senior Director  
+1 954 377 0494  
chase.kulp@cushwake.com



©2025 Cushman & Wakefield. All rights reserved. The information contained in this communication is strictly confidential. This information has been obtained from sources believed to be reliable but has not been verified. NO WARRANTY OR REPRESENTATION, EXPRESS OR IMPLIED, IS MADE AS TO THE CONDITION OF THE PROPERTY (OR PROPERTIES) REFERENCED HEREIN OR AS TO THE ACCURACY OR COMPLETENESS OF THE INFORMATION CONTAINED HEREIN, AND SAME IS SUBMITTED SUBJECT TO ERRORS, OMISSIONS, CHANGE OF PRICE, RENTAL OR OTHER CONDITIONS, WITHDRAWAL WITHOUT NOTICE, AND TO ANY SPECIAL LISTING CONDITIONS IMPOSED BY THE PROPERTY OWNER(S). ANY PROJECTIONS, OPINIONS OR ESTIMATES ARE SUBJECT TO UNCERTAINTY AND DO NOT SIGNIFY CURRENT OR FUTURE PROPERTY PERFORMANCE. COE-PM-CENTRAL- 11/20/24

1601-1649 NW 136th Ave. Sunrise, FL

# SUITE XX XX SF



PLACEHOLDER  
FOR FLOORPLAN

FOR MORE INFORMATION, PLEASE CONTACT

**DEANNA LOBINSKY**

Executive Director  
+1 954 377 0489  
deanna.lobinsky@cushwake.com

**CHASE KULP**

Senior Director  
+1 954 377 0494  
chase.kulp@cushwake.com

