

FOR LEASE

1210 LIGHT STREET, BALTIMORE, MD 21230



**Federal Hill Retail/Office
with Free On Site Parking**

Treva Ghattas

301.991.6334

treva@hyattcommercial.com

John Gallagher

410.260.6541

jgallagher@hyattcommercial.com

HIGHLIGHTS

- Prime freestanding retail/office building in the heart of Federal Hill
- Modern upscale finishes on the 1st floor
- 7 marked on-site parking spaces in the rear for Tenant
- Significant signage opportunity on heavily trafficked Light Street
- Furniture can be included
- Minutes from Inner Harbor, Ravens Stadium and Camden Yards
- Surrounded by a community of local and national restaurants, retailers and professional services
- Strong neighborhood association



OFFERING



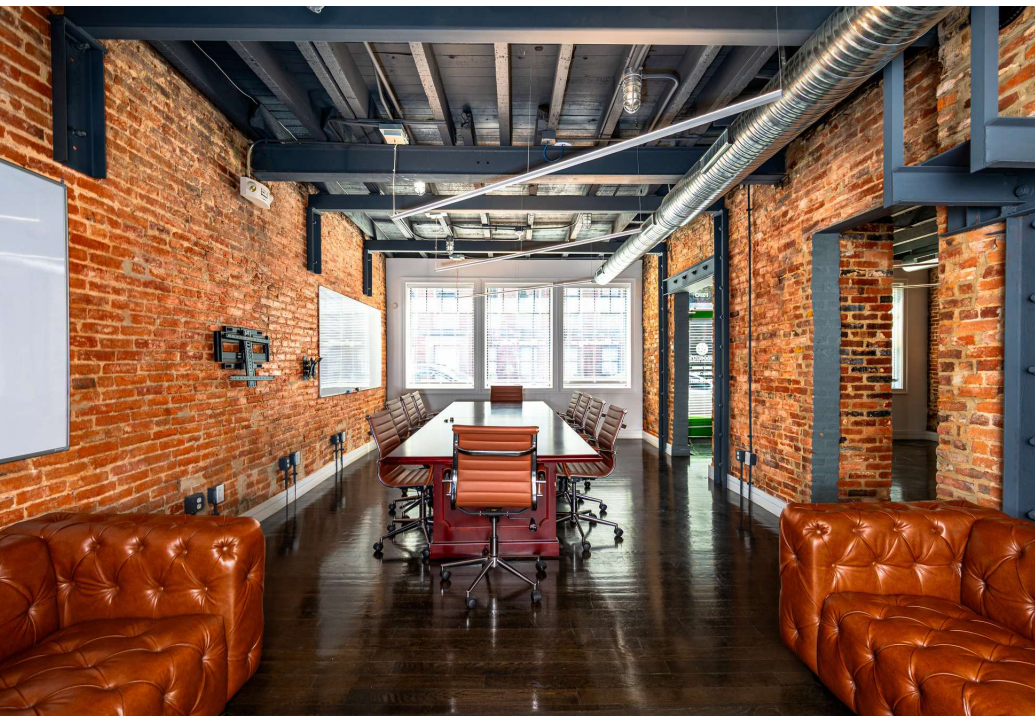
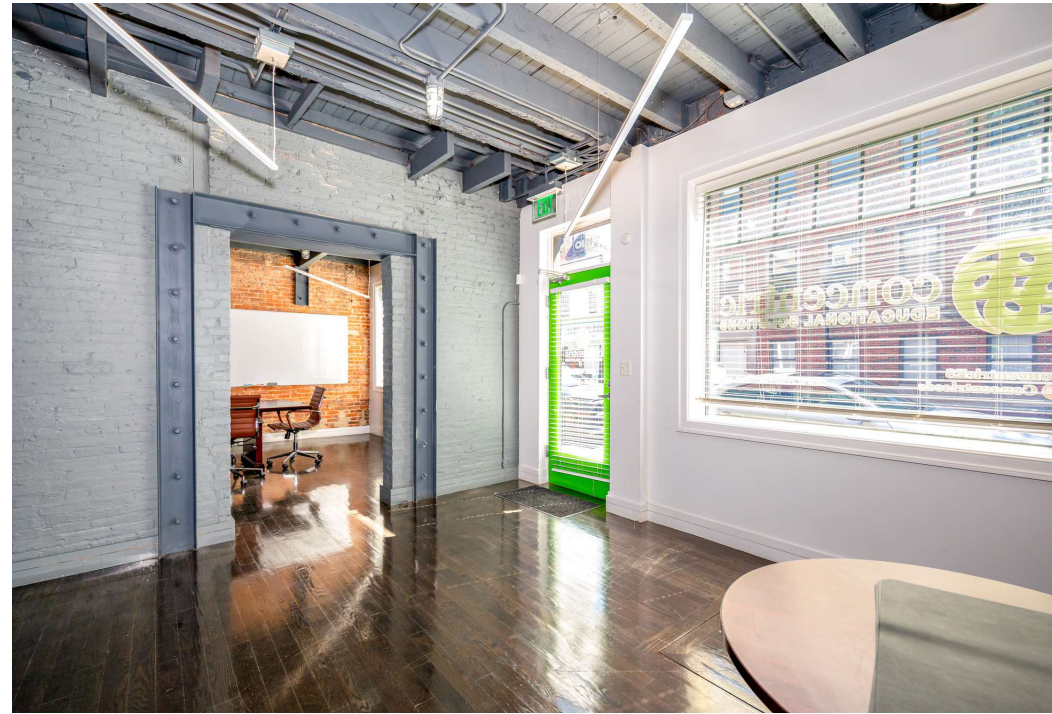
FOR LEASE

OFFICE SPACE/RETAIL

Building Size:	± 4,518 SF (Full Building)
Floors:	2
Rate:	\$20 PSF
Availability:	Immediate



ADDITIONAL PHOTOS



RETAILER MAP



ORIOLE PARK OF CAMDEN YARDS

PNC

PIER SIX PAVILION

LOCH BAR

WHOLE FOODS

M&T Bank

STARBUCKS COFFEE

Bank of America

Constellation

DUNKIN' DONUTS

TOPGOLF

1021 LIGHT ST

FEDERAL HILL ACE

Ox Order & Chaos

Cross Street Market

Koba Cafe

Giant, Subway eat fresh, Wells Fargo, McDonald's



CONTACT

HYATT COMMERCIAL

410.266.8800

2568A Riva Rd, Suite 300, Annapolis, MD 21401

Treva Ghattas

301.991.6334

treva@hyattcommercial.com

John Gallagher

410.260.6541

jpgallagher@hyattcommercial.com

While we have no reason to doubt the accuracy of any of the information supplied, we cannot, and do not, guarantee its accuracy. All information should be independently verified prior to a purchase or lease of the property. We are not responsible for errors, omissions, misuse, or misinterpretation contained herein and make no warranty of any kind, express or implied, with respect to the property or any other matters. The property is subject to price change or withdrawal without notice.