



# GOLD AND COMPANY, LLC

[WWW.GOLDCOMMERCIAL.NET](http://WWW.GOLDCOMMERCIAL.NET)

*Commercial Real Estate in the Baltimore Metropolitan Area*



**2700 W. Patapsco Ave. Baltimore, MD 21230**

## Gold And Company, LLC

**For More Information:**

**Jim Chivers**  
Sr. Vice President  
443.928.7522 cell  
[jim@goldcommercial.net](mailto:jim@goldcommercial.net)

**Will McCullough**  
Vice President  
410.292.2985 cell  
[will@goldcommercial.net](mailto:will@goldcommercial.net)

[www.goldcommercial.net](http://www.goldcommercial.net)

- +/- 27,100 sf Warehouse Space Available
- FOR LEASE
- 16' Clear Height
- Covered Dock Platform Loading Area
- Fenced Truck Court
- I-1 Zoning
- Hub and Enterprise Zone
- Close Access to I-95
- Contact For More Information

This property offering is subject to change without notice. All information is deemed reliable but not guaranteed.

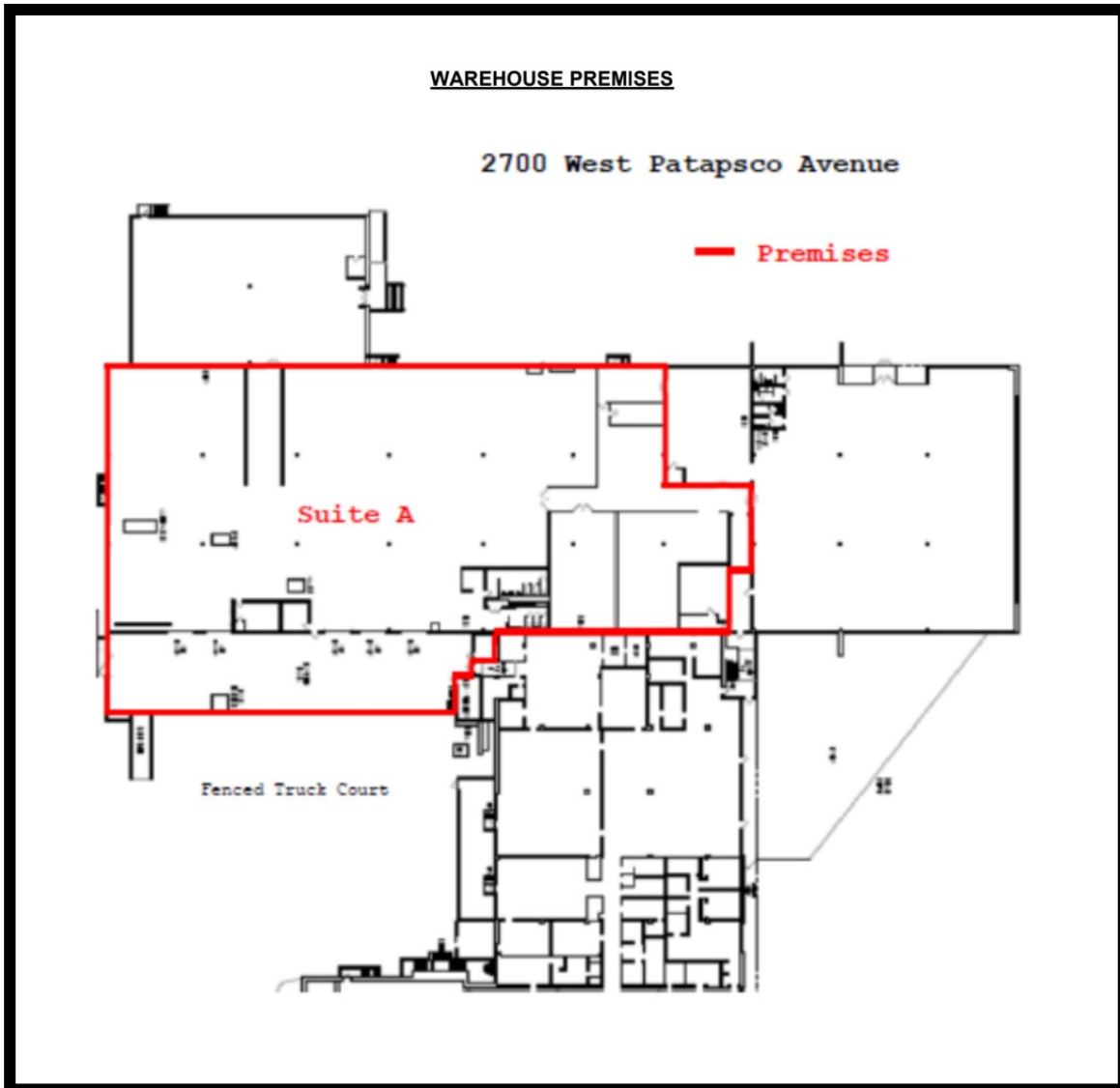


# **Gold And Company**

**Commercial Real Estate in the Baltimore Metropolitan Area**

**2700 W. Patapsco Ave. Baltimore, MD 21230**

## **Building Plan**



**Jim Chivers / Will McCullough**  
**Gold And Company, LLC**  
**5601 Newbury St.**  
**Baltimore, MD 21209**

**410.578.1300 (Office)**

**[www.goldcommercial.net](http://www.goldcommercial.net)**



# **Gold And Company**

**Commercial Real Estate in the Baltimore Metropolitan Area**

**2700 W. Patapsco Ave. Baltimore, MD 21230**

## **Interior Picture**



**Jim Chivers / Will McCullough**  
**Gold And Company, LLC**  
**5601 Newbury St.**  
**Baltimore, MD 21209**

**410.578.1300 (Office)**  
**[www.goldcommercial.net](http://www.goldcommercial.net)**

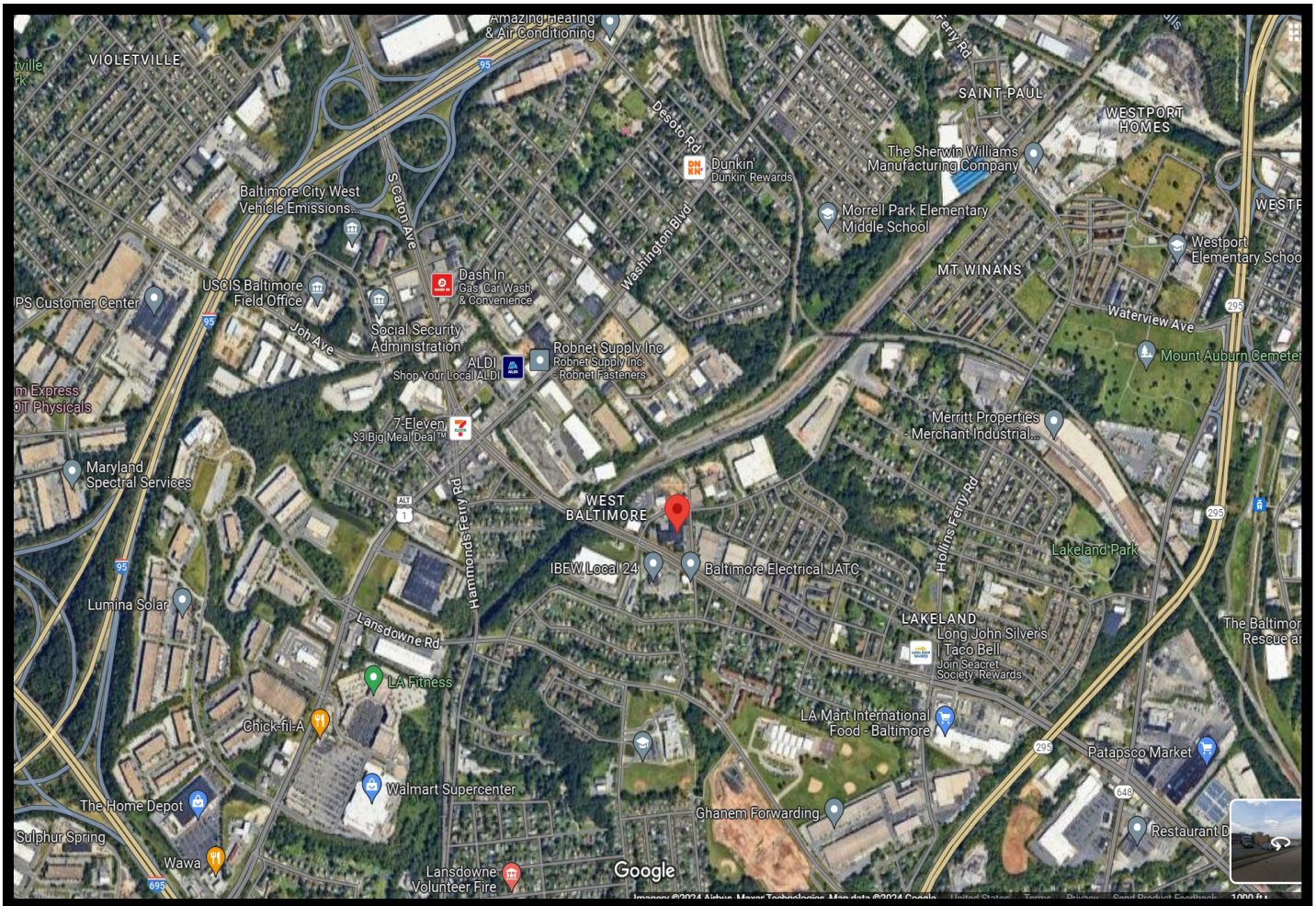


# **Gold And Company**

**Commercial Real Estate in the Baltimore Metropolitan Area**

**2700 W. Patapsco Ave. Baltimore, MD 21230**

## **MAP**



**Jim Chivers / Will McCullough**  
**Gold And Company, LLC**  
**5601 Newbury St.**  
**Baltimore, MD 21209**

**410.578.1300 (Office)**

**[www.goldcommercial.net](http://www.goldcommercial.net)**