

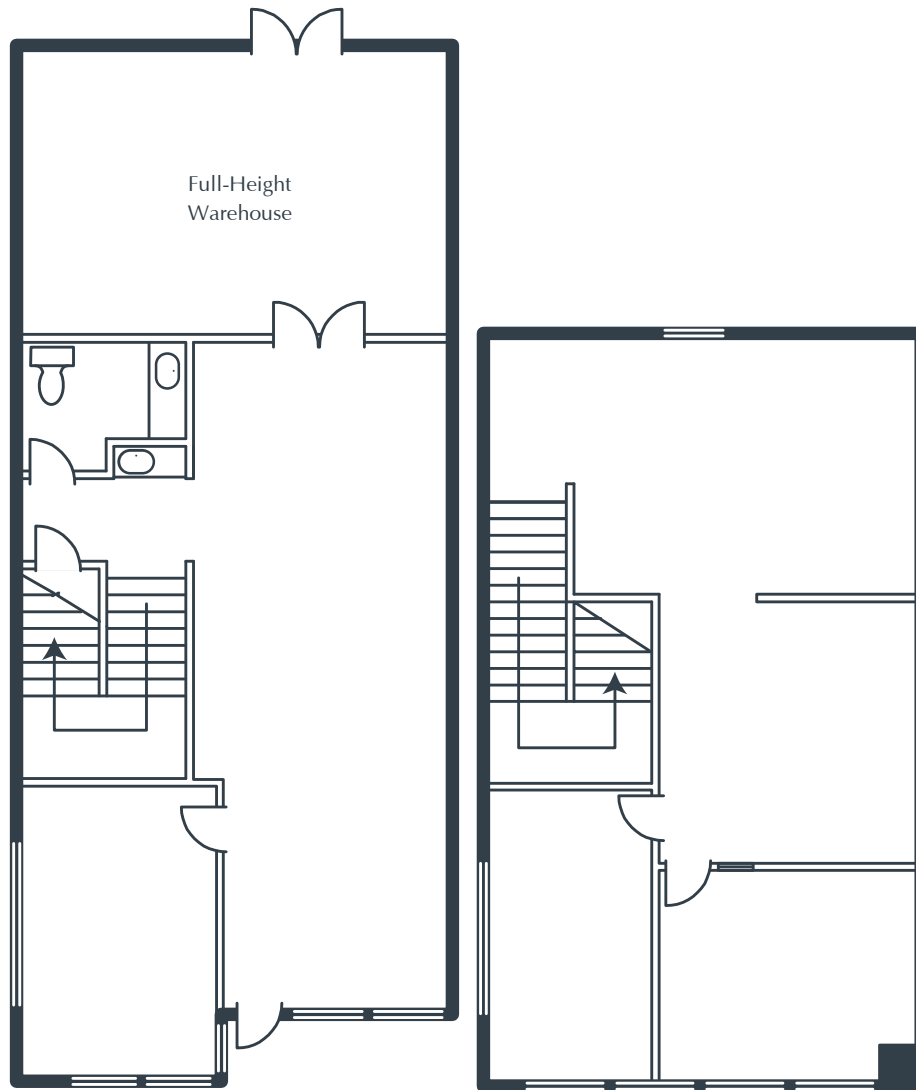
ORCHARD TECHNOLOGY PARK

11 Orchard Road, Suite 107
Lake Forest, CA

2,230 Square Feet

\$1.65 SF/MO

Triple Net



NOTES

- Reception
- 3 Window Offices
- Restroom
- Coffee Bar
- Large Open Work Area
- Shipping/Receiving Doors
- Approximately 378 sq. ft. of Full-Height Warehouse
- Part of a Professionally Managed Business Park

Created by Olen Commercial Realty Corp., 2022.
Information is not to be published or copied without
written approval. Square footage and floor plans are
estimates and should be separately verified. All rates,
terms, floor plans, and building facts are subject to
change without notice.

ea 03.30.2026

ELLYSSA DERRY

Senior Leasing Director
949.719.7204
ederry@olen.com



Seven Corporate Plaza
Newport Beach, CA
949.644.6536
www.olen.com