



## MEDICAL/OFFICE SPACE FOR LEASE 2040 Forest Ave, San Jose, CA 95128

### FOREST AVE CENTER



For More Information:

**KEVIN SAKIMOTO**

DRE# 01753689  
(408)-390-1670 CELL  
(669)-271-4225 OFFICE

### Property Highlights:

#### SUITE 7:

- Size: 717 sq/ft
- Rent: \$2.25 psf
- NNN: \$1.10 psf
- Private Parking Available

Prominent medical/professional office building located off of Hwy 880 with convenient access to Hwy 280. Both of buildings are occupied by medical professionals.

**PACIFIC GATEWAY PROPERTIES**

PHONE: (669) 271-4225

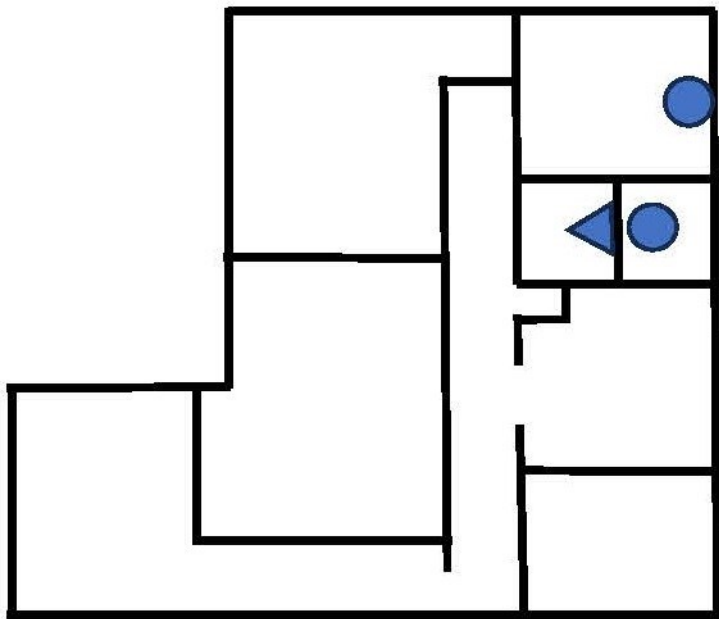
EMAIL: [kevin@pacgatewayproperties.com](mailto:kevin@pacgatewayproperties.com)



# FLOOR PLAN

2040 Forest Ave San Jose, CA 95128

## 2040 Forest Ave-Suite 7



Front

**PACIFIC GATEWAY  
PROPERTIES**

PHONE: (669) 271-4225

EMAIL: [kevin@pacgatewayproperties.com](mailto:kevin@pacgatewayproperties.com)



## PHOTOS

2040 Forest Ave San Jose, CA 95128

2040 Forest Ave San Jose, CA 95128—Ste 7



**PACIFIC GATEWAY  
PROPERTIES**