



696 E Fordham Road

Bronx, NY 10458 (Crotona Avenue)

Entire Building Available

SUITABLE FOR OFFICE, SCHOOL AND MEDICAL USE

Premises:	First Floor – 30,000 SF 2nd Floor – <u>10,000 SF</u> TOTAL - 40,000 SF
Possession:	Immediate
Term:	Long term lease available
Rent:	Upon request

Features:

- Stand alone building with branding opportunity
- Located in Community School District 10
- BX9, BX12, BX17 & BX22 stop at building
- Walking distance to Fordham Metro North station
- 1 block from Fordham University & The Bronx Zoo

CONTACTS:

Al Gutierrez
+1 203 339 1387
al.gutierrez@jll.com

Edward DiTolla
+1 212 812 5922
edward.ditolla@jll.com

William Korchak
+1 212 812 5818
william.korchak@jll.com

Ellen Herman
+1 212 418 2652
ellen.herman@jll.com

Jones Lang LaSalle Brokerage, Inc. | 330 Madison Avenue New York, NY 10017

DISCLAIMER
Although information has been obtained from sources deemed reliable, neither Owner nor JLL makes any guarantees, warranties or representations, express or implied, as to the completeness or accuracy as to the information contained herein. Any projections, opinions, assumptions or estimates used are for example only. There may be differences between projected and actual results, and those differences may be material. The Property may be withdrawn without notice. Neither Owner nor JLL accepts any liability for any loss or damage suffered by any party resulting from reliance on this information. If the recipient of this information has signed a confidentiality agreement regarding this matter, this information is subject to the terms of that agreement. ©2024 Jones Lang LaSalle IP, Inc. All rights reserved.



696 E Fordham Road
Bronx, NY



Aerial Map



CONTACTS:

Al Gutierrez

+1 203 339 1387

al.gutierrez@jll.com

Edward DiTolla

+1 212 812 5922

edward.ditolla@jll.com

William Korchak

+1 212 812 5818

william.korchak@jll.com

Ellen Herman

+1 212 418 2652

ellen.herman@jll.com

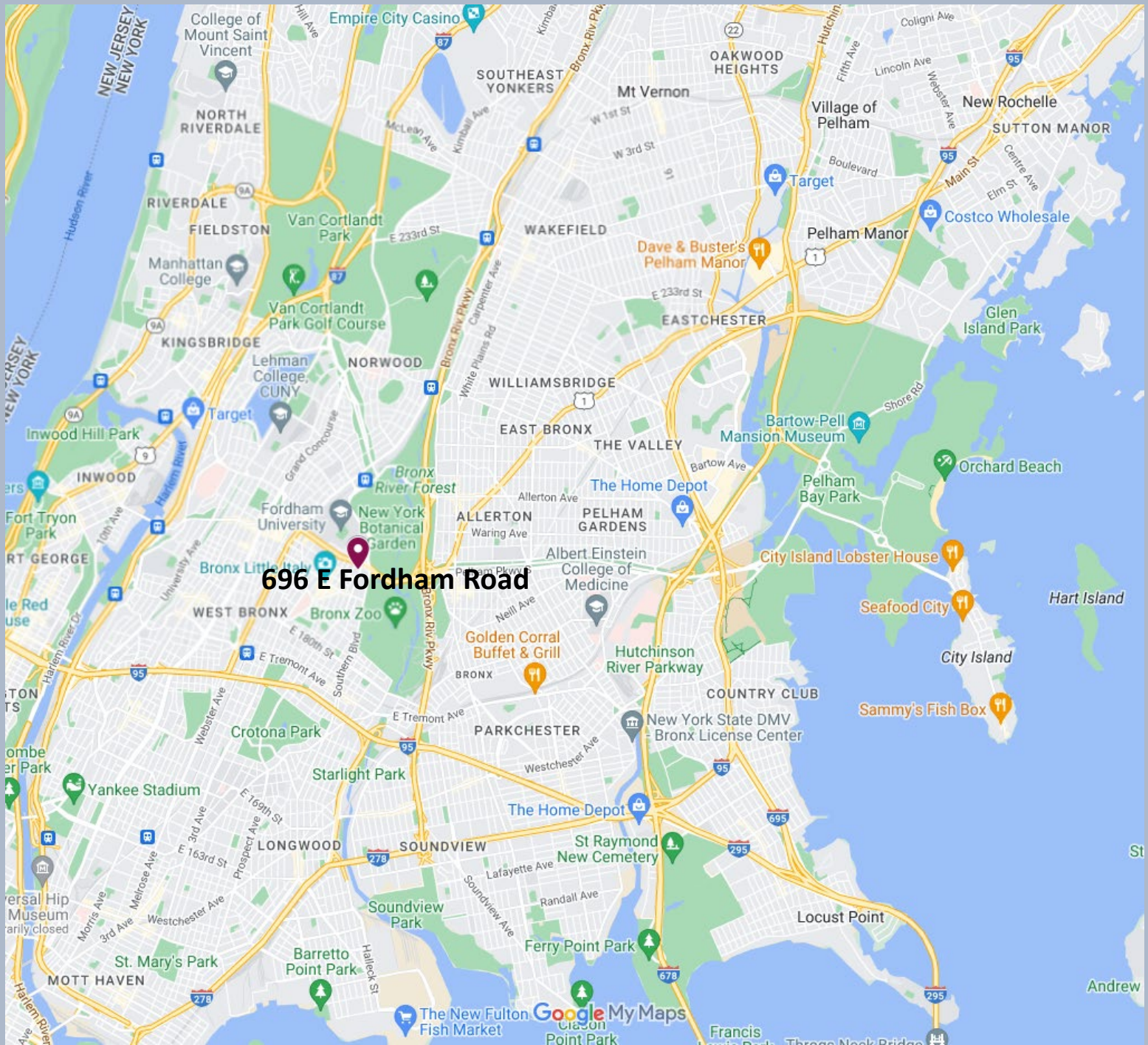
Jones Lang LaSalle Brokerage, Inc. | 330 Madison Avenue New York, NY 10017

DISCLAIMER

Although information has been obtained from sources deemed reliable, neither Owner nor JLL makes any guarantees, warranties or representations, express or implied, as to the completeness or accuracy as to the information contained herein. Any projections, opinions, assumptions or estimates used are for example only. There may be differences between projected and actual results, and those differences may be material. The Property may be withdrawn without notice. Neither Owner nor JLL accepts any liability for any loss or damage suffered by any party resulting from reliance on this information. If the recipient of this information has signed a confidentiality agreement regarding this matter, this information is subject to the terms of that agreement. ©2024 Jones Lang LaSalle IP, Inc. All rights reserved.

696 E Fordham Road

Bronx, NY



CONTACTS:

Al Gutierrez
+1 203 339 1387
al.gutierrez@jll.com

Edward DiTolla
+1 212 812 5922
edward.ditolla@jll.com

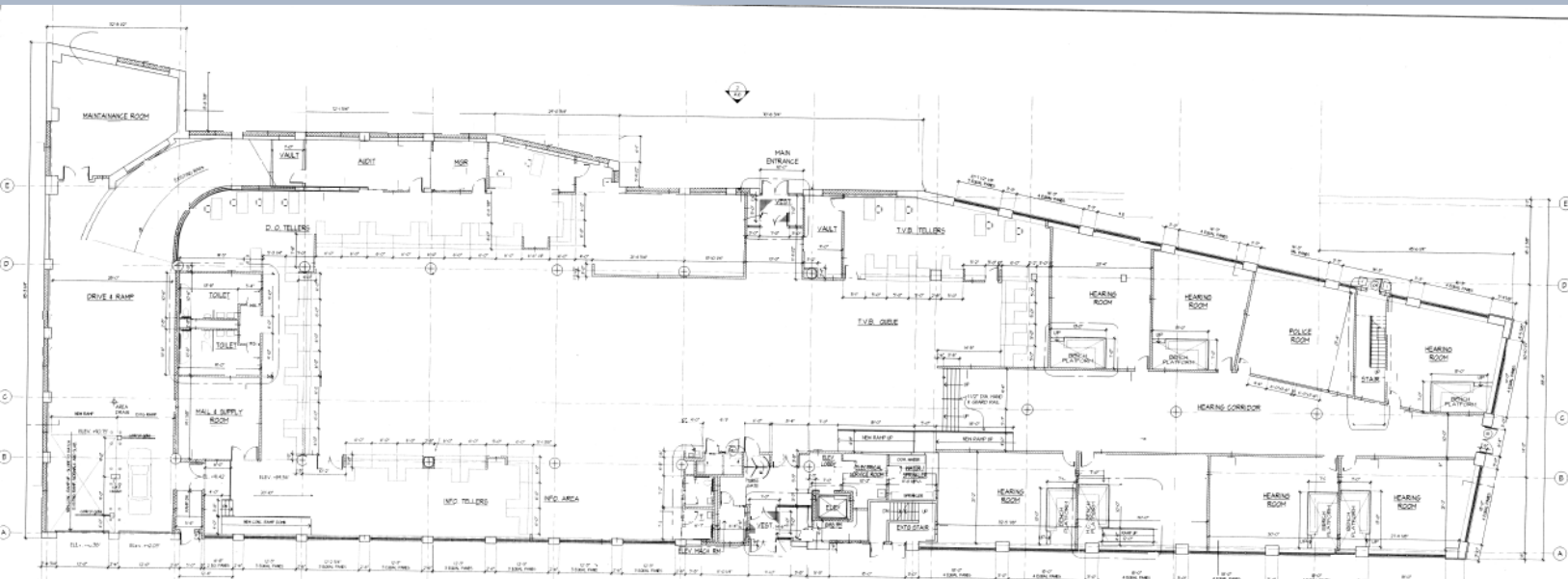
William Korchak
+1 212 812 5818
william.korchak@jll.com

Ellen Herman
+1 212 418 2652
ellen.herman@jll.com

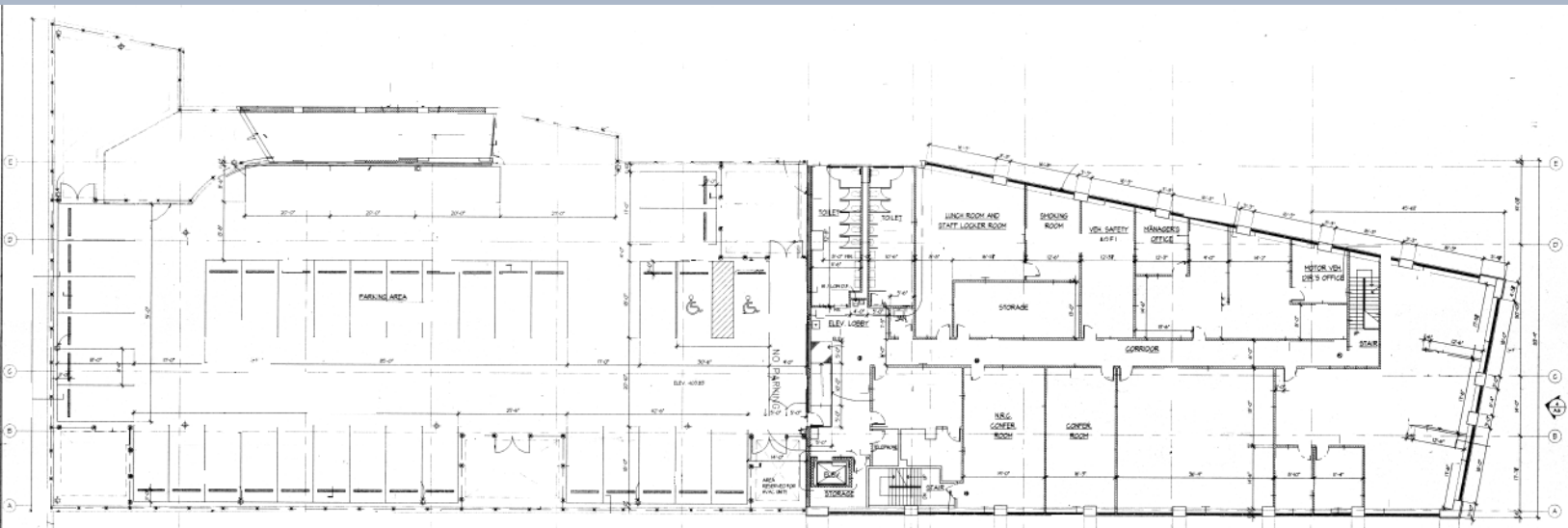
696 E Fordham Road

Bronx, NY

Floor Plans of Existing Building



1st floor



2nd floor & Roof

CONTACTS:

Al Gutierrez

+1 203 339 1387

al.gutierrez@jll.com

Edward DiTolla

+1 212 812 5922

edward.ditolla@jll.com

William Korchak

+1 212 812 5818

william.korchak@jll.com

Ellen Herman

+1 212 418 2652

ellen.herman@jll.com

Jones Lang LaSalle Brokerage, Inc. | 330 Madison Avenue New York, NY 10017

DISCLAIMER

Although information has been obtained from sources deemed reliable, neither Owner nor JLL makes any guarantees, warranties or representations, express or implied, as to the completeness or accuracy as to the information contained herein. Any projections, opinions, assumptions or estimates used are for example only. There may be differences between projected and actual results, and those differences may be material. The Property may be withdrawn without notice. Neither Owner nor JLL accepts any liability for any loss or damage suffered by any party resulting from reliance on this information. If the recipient of this information has signed a confidentiality agreement regarding this matter, this information is subject to the terms of that agreement. ©2024 Jones Lang LaSalle IP, Inc. All rights reserved.