

±152,510 SF Available for Sublease MANUFACTURING / INDUSTRIAL BUILDING

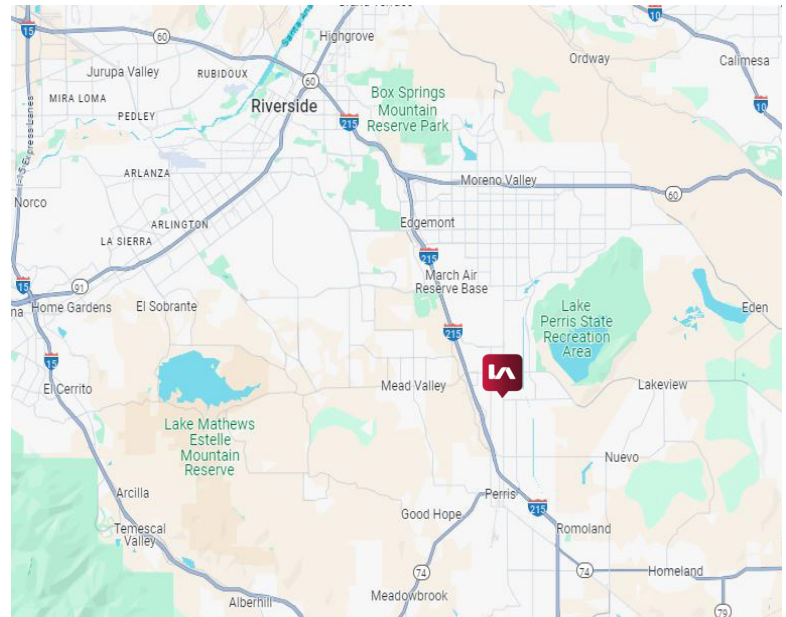
3407 N. Perris Blvd, Perris, CA 92571

LEE & ASSOCIATES
COMMERCIAL REAL ESTATE SERVICES



PROPERTY FEATURES:

- ±152,510 SF Building on Approx ±9.2 Acres of Land (Divisible to 60k, 80k, 100k, or 152k sf)
- ±11,690 SF Office (Divisible)
- ±15,648 SF Mezzanine
- 21' - 25' Clear Height (Center of Warehouse at 25')
- 4,000 Amps, 277/480 Volt, 3 Phase/4-Wire
- 22 Ground Level Doors
- Sprinkler System
- Fluorescent Lighting
- 212 Skylights Throughout
- Warehouse Breakroom
- Warehouse Restrooms
- Large Paved Yard
- Two Access Points - Perris Blvd & Sinclair St
- Zoning: LI - Light Industrial
- Easy Access to the I-215 Fwy
- Sublease through March 31, 2029
- Possible Adjacent ±2 Acres Available for Lease



MICHAEL GIULIANO
mgiuliano@lee-assoc.com
C 951.314.2195
License No. 01211757

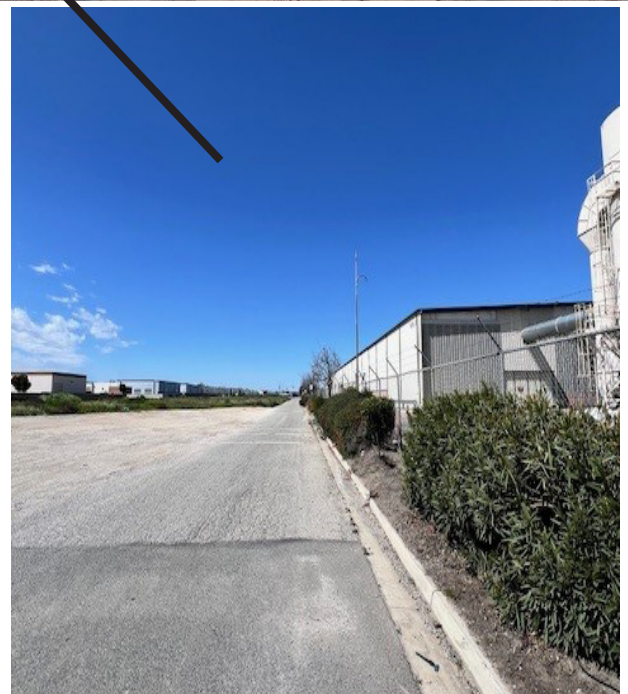
MARLENE MESILLAS
mmesillas@lee-assoc.com
D 909.373.2704
License No. 02202524

FERNANDO ESCOBEDO
fescobedo@lee-assoc.com
D 909.373.2709
License No. 02213624

All information furnished regarding property for sale, rental or financing is from sources deemed reliable, but no warranty or representation is made to the accuracy thereof and same is submitted to errors, omissions, change of price, rental or other conditions prior to sale, lease or financing or withdrawal without notice. No liability of any kind is to be imposed on the broker herein.

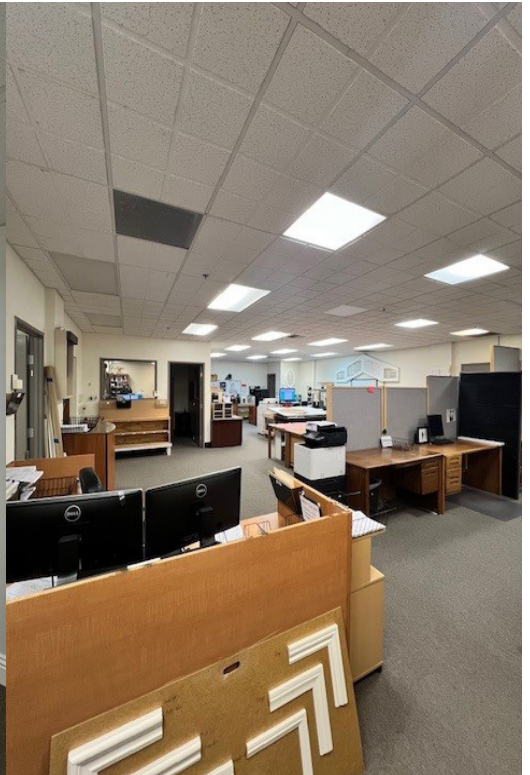
±152,510 SF Available for Sublease
MANUFACTURING / INDUSTRIAL BUILDING

3407 N. Perris Blvd, Perris, CA 92571



±152,510 SF Available for Sublease
MANUFACTURING / INDUSTRIAL BUILDING

3407 N. Perris Blvd, Perris, CA 92571



MICHAEL GIULIANO
mgiuliano@lee-assoc.com
C 951.314.2195
License No. 01211757

MARLENE MESILLAS
mmesillas@lee-assoc.com
D 909.373.2704
License No. 02202524

FERNANDO ESCOBEDO
fescobedo@lee-assoc.com
D 909.373.2709
License No. 02213624