

260 | locke
drive | marlborough , ma

65,000 sf office space available for lease



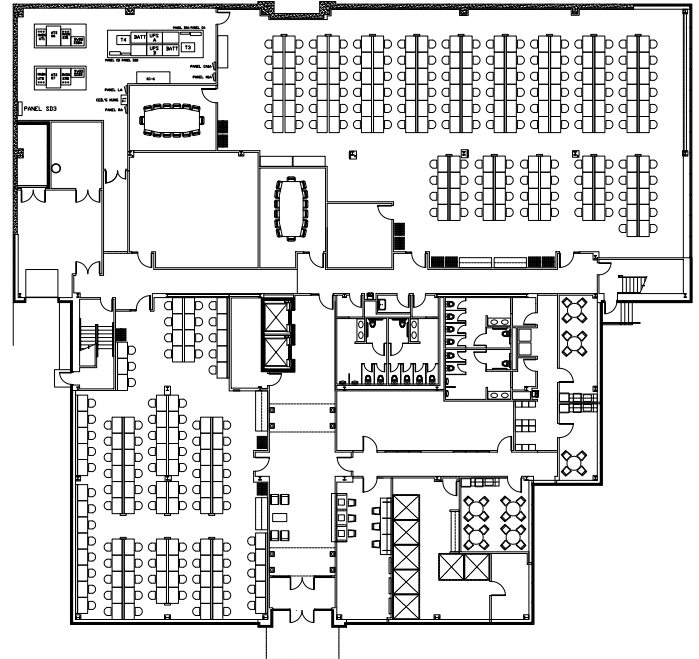
**AVISON
YOUNG**

260 locke drive marlborough, ma

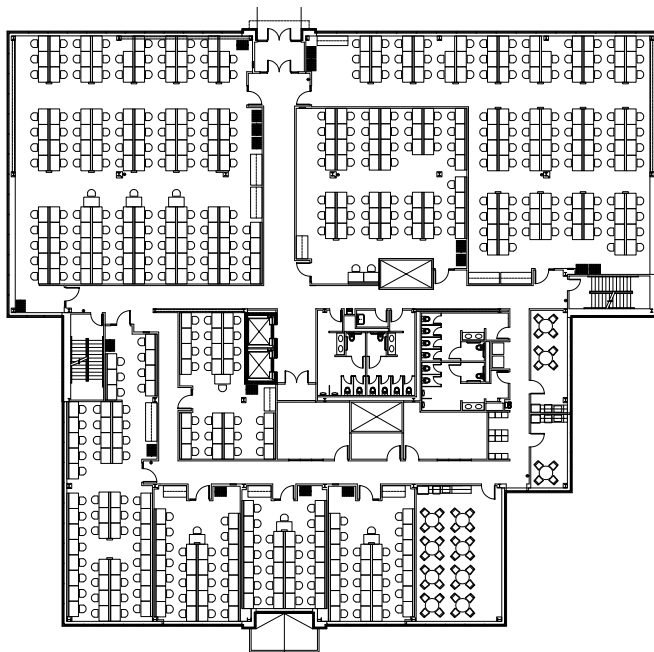
This fully built-out office space offers a mostly open floor plan layout. It also provides the option to subdivide smaller suites and accommodate up to 65,325 SF of contiguous space. The building is positioned for convenience and accessibility with direct access to I-495 and I-290.

year built	2005
building size	65,327 sf
floor size	21,775 sf
floors	three (3)
parking	170 spaces
loading	1 tailboard dock

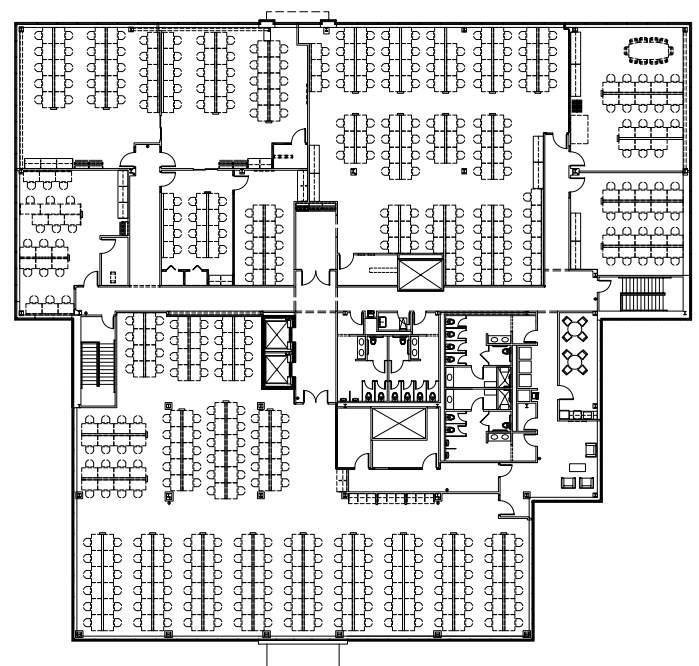
first floor: 21,775 sf

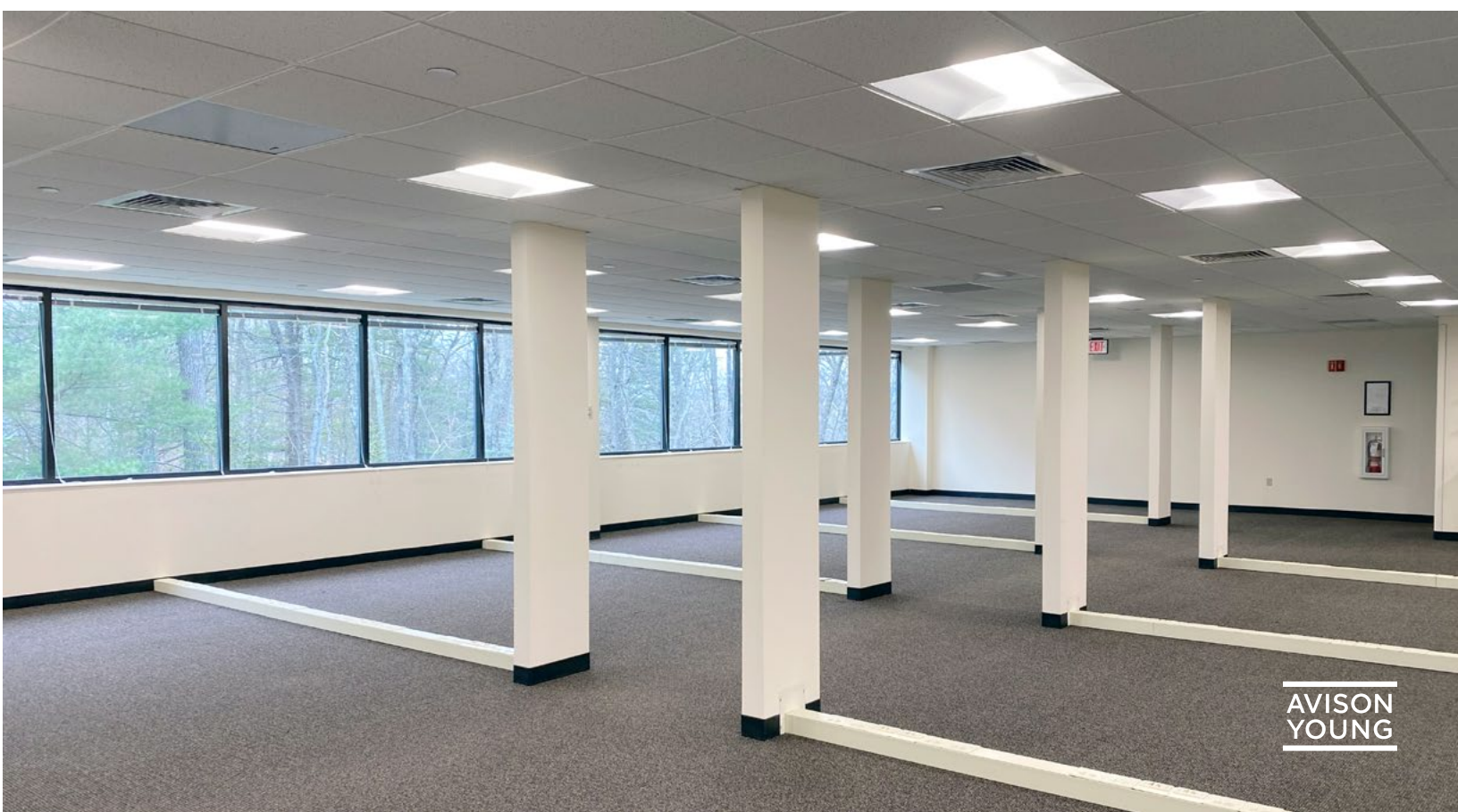


second floor: 21,775 sf

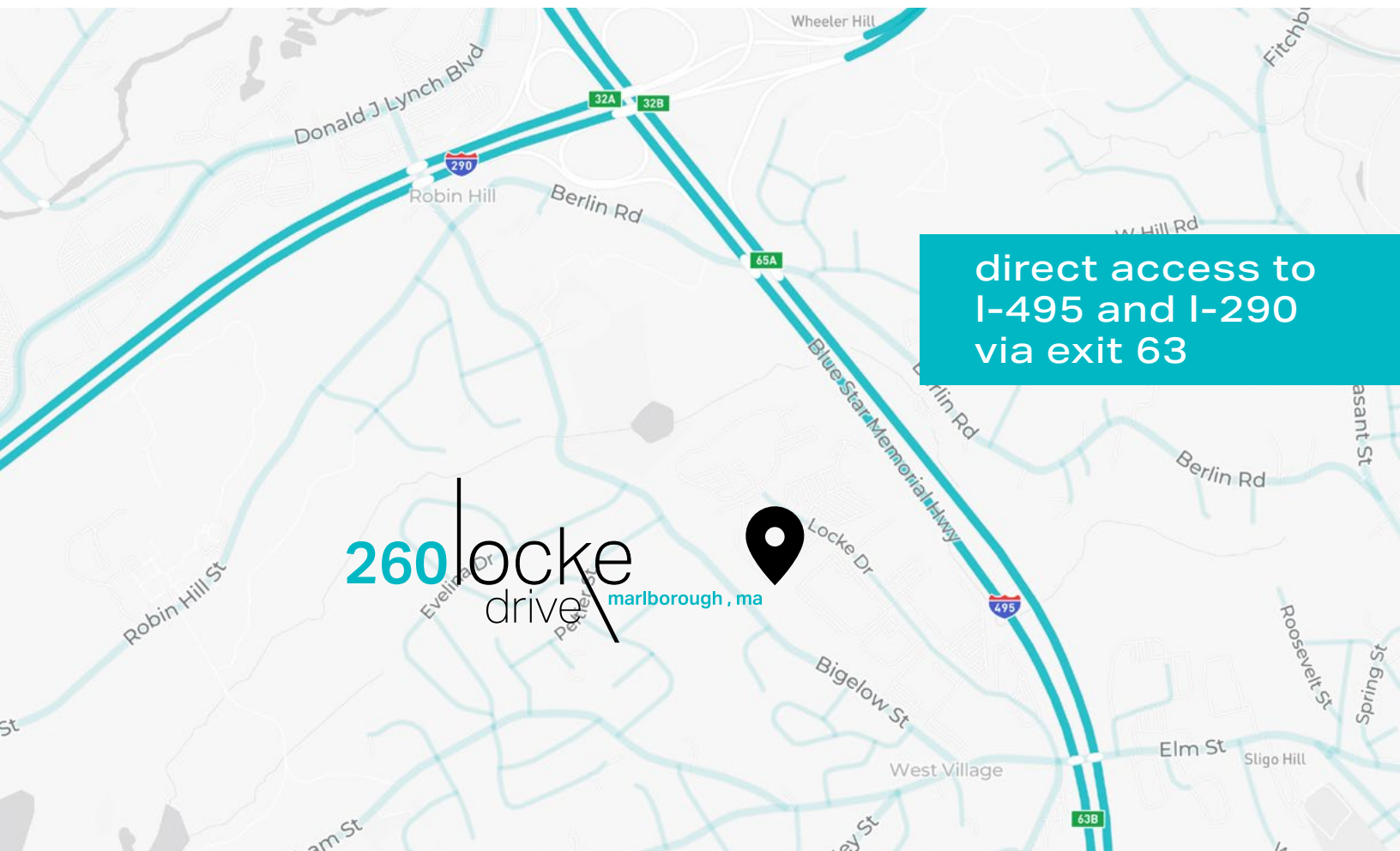


third floor: 21,775 sf





in the area



direct access to
I-495 and I-290
via exit 63

260 Locke
Drive
Marlborough, MA

Jonathan Pezzoni
Senior Vice President
+1 617 758 8742
jon.pezzoni@avisonyoung.com

Sam Bachrach
Associate
+1 617 584 8838
sam.bachrach@avisonyoung.com