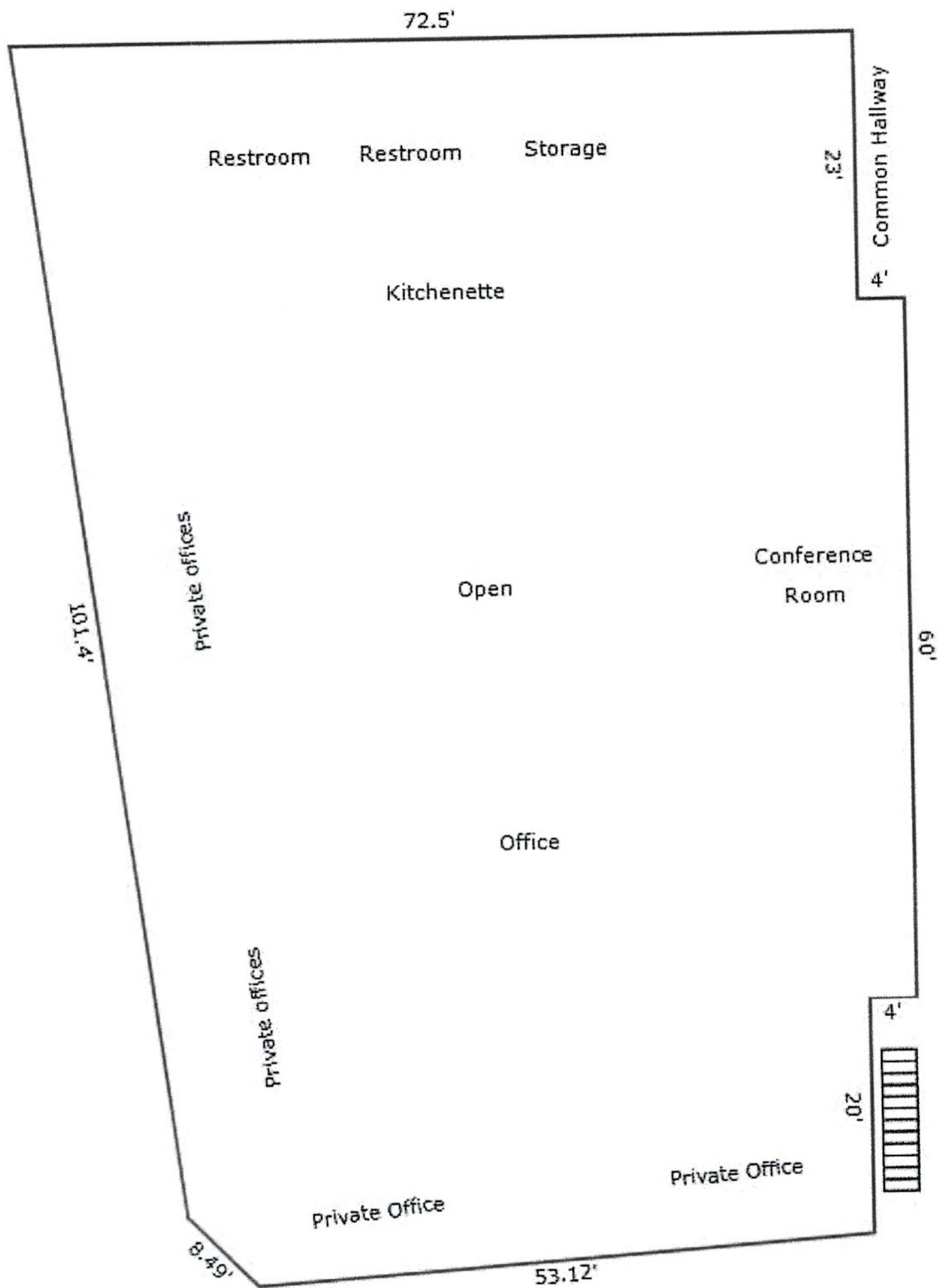
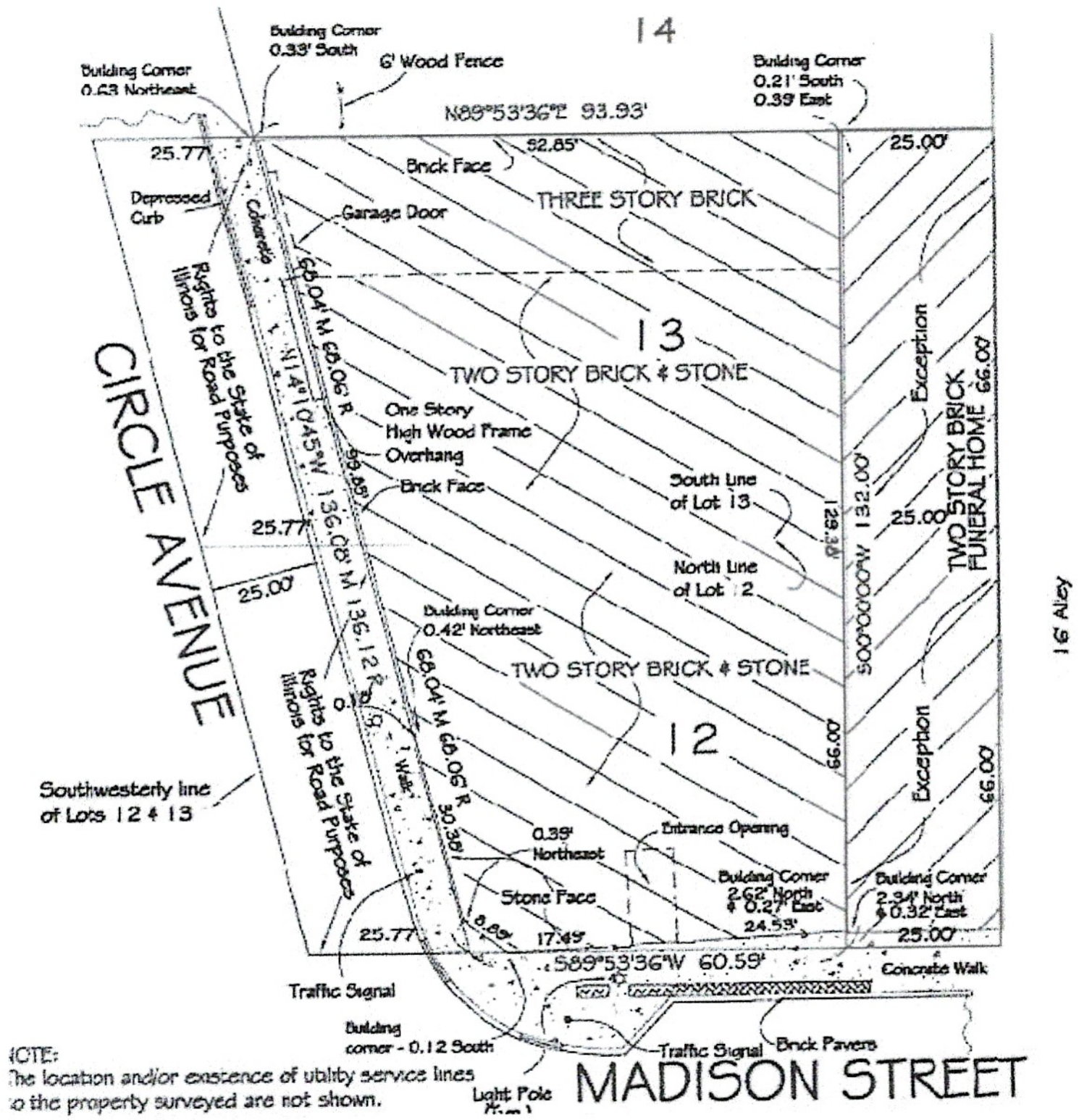


UNIT FLOOR PLAN



SITE DATA

The site is located at the northeast corner of Madison Street and Circle Avenue. Madison Street is a fully-improved, two-lane primary street with parallel parking on both sides. The plat of survey below illustrates the building and location.



The site has 60.59 feet of frontage along Madison Street and 136 feet of frontage along Circle Avenue. The site is bordered to the east and north by two-story, commercial or residential use buildings. Across the street to the south is a mix of one to three-story commercial use properties.

Off-site improvements developed include asphalt-paved roads and alley, concrete curbs, street gutters, storm and sanitary drain lines and overhead street lighting.

Floor Plans

