



159 East 125th Street *Between Lexington & Third Avenues*

Area

Partial 3rd Floor: 17,206 RSF

Rental Rate

Upon Request

Possession

Immediate

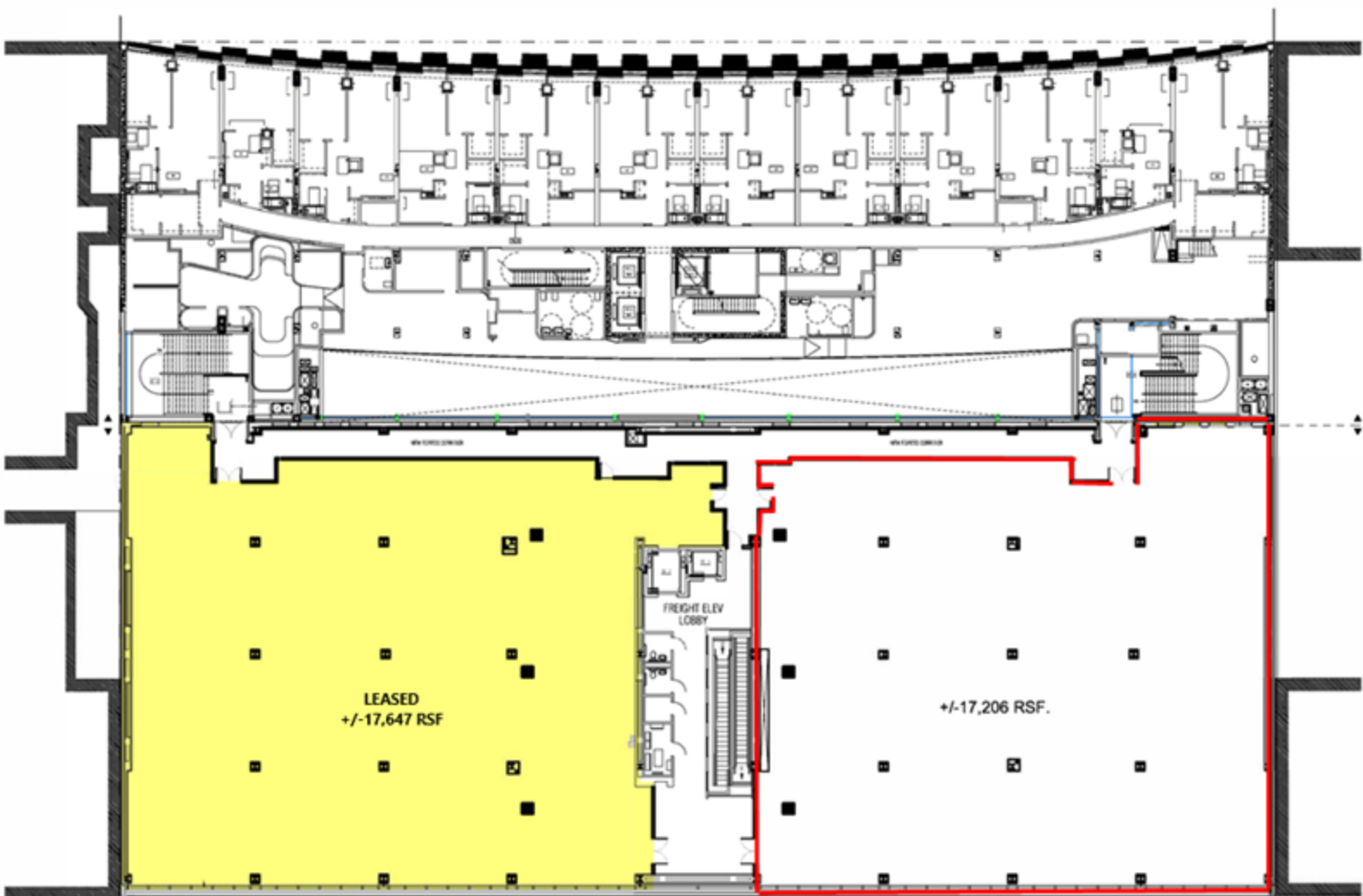
Term

Long Term

[DOWNLOAD BROCHURE](#)

Comments

- NEW TO MARKET
- Suitable for both office or retail
- Floor serviced by both elevators and escalator
- TI available for qualified Tenants
- Leasehold condominium opportunity is possible for non-profits
- Parking in building
- Subway and Metro North Railroad nearby
- 24/7 day access
- High ceilings



1

For information, please contact:

Barry Goodman

Senior Managing Director

t 212-372-2243

Barry.Goodman@nrmk.com

125 Park Avenue
New York, NY 10017
t 212-372-2243

nrmk.com



125 Park Avenue, New York, NY 10017 t 212-372-2243

The information contained herein has been obtained from sources deemed reliable but has not been verified and no guarantee, warranty or representation, either express or implied, is made with respect to such information. Terms of sale or lease and availability are subject to change or withdrawal without notice.

©2025 Newmark. All Rights Reserved.