

# FLEX WAREHOUSE | FOR SUBLEASE

7401 GALILEE RD, SUITE 160 & 350, ROSEVILLE, CA 95678

LOCATED OFF OF PLEASANT GROVE BLVD WITH QUICK AND EASY FREEWAY ACCESS TO HWY 65



**Jason Huntoon**  
Associate Vice President  
Office | Industrial |  
Investments  
916.677.8127  
jason.huntoon@tricommercial.com  
LIC: #02109361

**Steve Park**  
Sr. Vice President  
916.677.8114  
steve.park@tricommercial.com  
LIC: #01472232  
3400 Douglas Blvd, Suite 190,  
Roseville, CA 95661

# FOR SUBLEASE

7401 GALILEE RD  
SUITE 160 & 350



## Property Details

- ±4,504 SF Flex Space
- Sublease Term Expiration: 09/30/28
- Seven (7) Private Offices
- Two (2) Restrooms
- Three (3) Grade Level Doors



**LEASE RATE: \$1.26/SF PER MONTH, MOD. GROSS**

**Jason Huntoon**

916.677.8127  
jason.huntoon@tricommercial.com  
LIC: #02109361

**Steve Park**

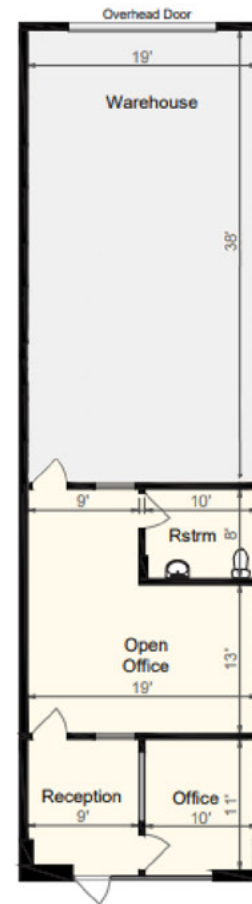
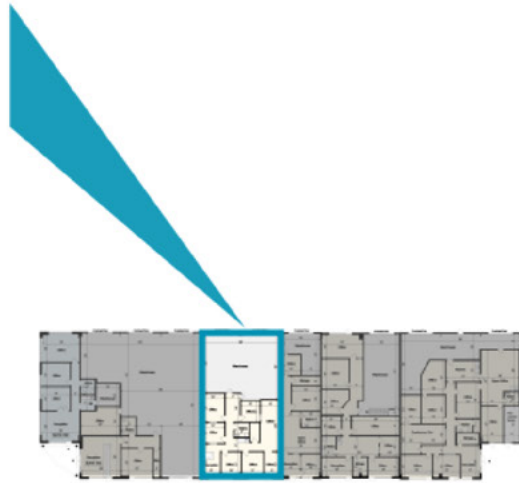
916.677.8114  
steve.park@tricommercial.com  
LIC: #01472232



www.tricommercial.com

# FOR SUBLEASE

7401 GALILEE RD  
SUITE 160 & 350



Not to Scale\*

**Jason Huntoon**

916.677.8127  
jason.huntoon@tricommercial.com  
LIC: #02109361

**Steve Park**

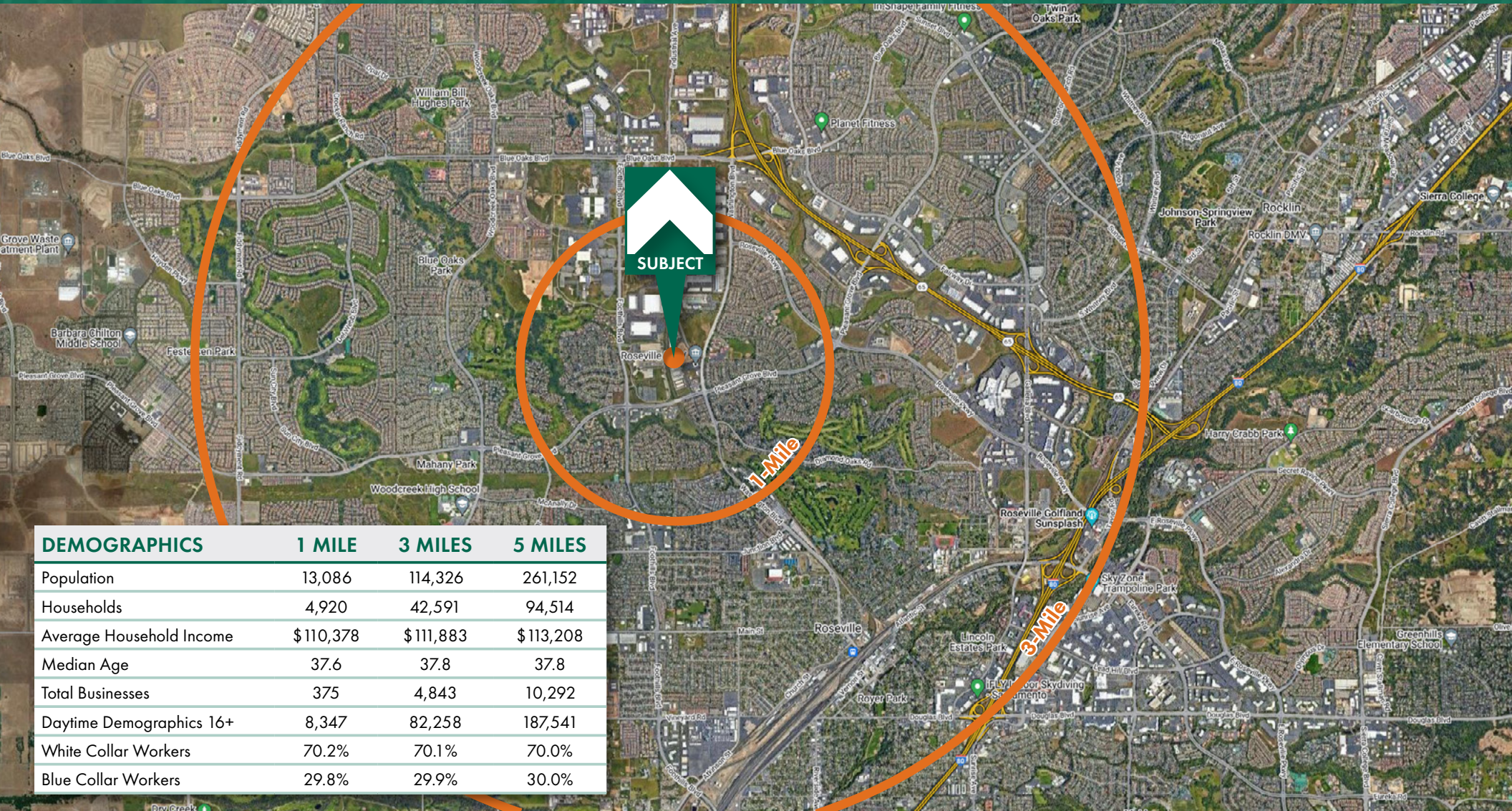
916.677.8114  
steve.park@tricommercial.com  
LIC: #01472232



www.tricommercial.com

# FOR SUBLEASE

**7401 GALILEE RD  
SUITE 160 & 350**



**Jason Huntoon**

916.677.8127

[jason.huntoon@tricommercial.com](mailto:jason.huntoon@tricommercial.com)

LIC: #02109361

**Steve Park**

916.677.8114

[steve.park@tricommercial.com](mailto:steve.park@tricommercial.com)

LIC: #01472232



[www.tricommercial.com](http://www.tricommercial.com)