

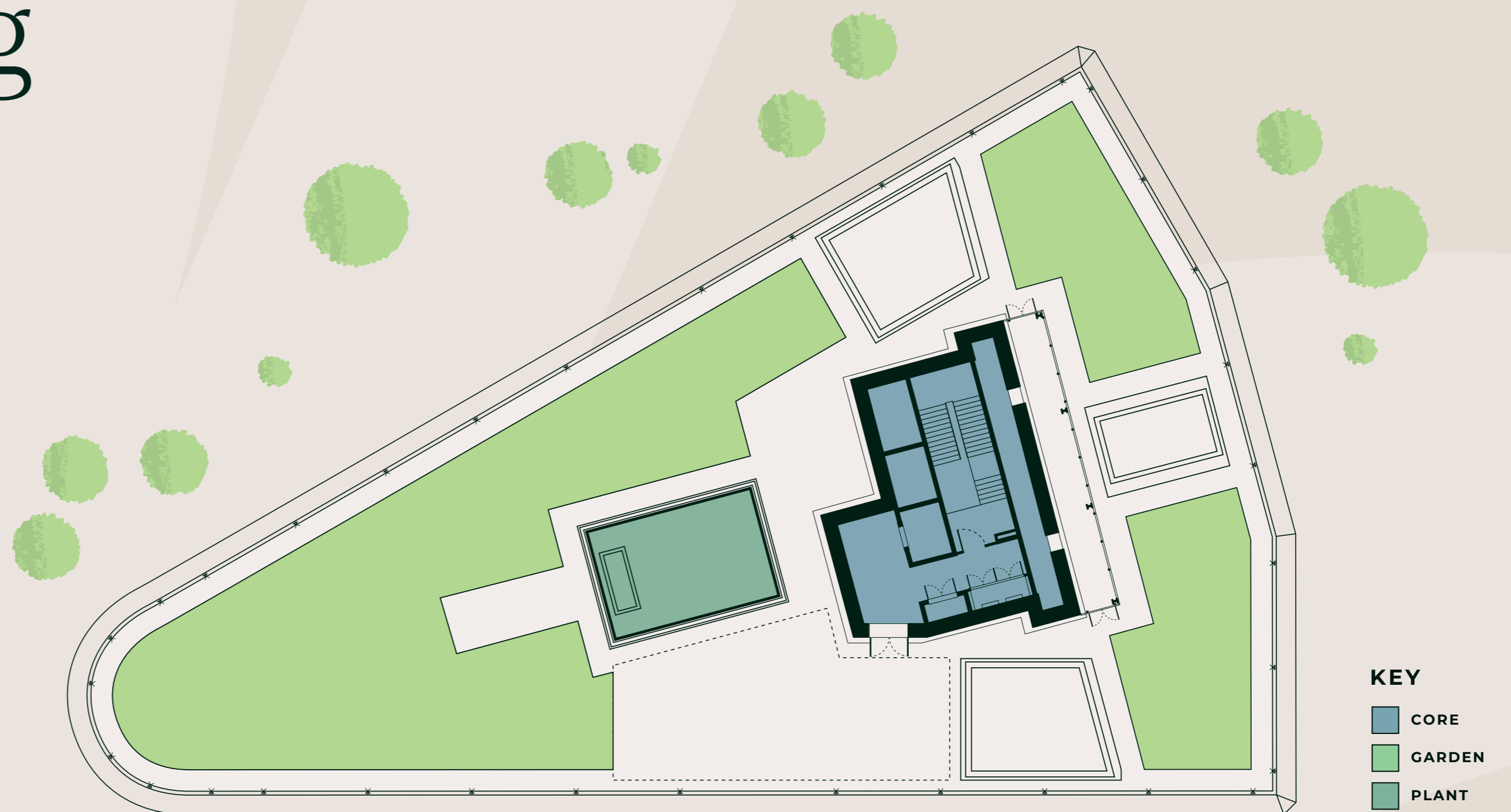
An architectural rendering of a modern building facade. The building features a grid of windows with dark frames and light-colored brickwork. A prominent tree stands in the foreground, casting shadows on the plaza. People are shown sitting on a long wooden bench and walking in the plaza. A coffee shop with a sign that says 'COFFEE' is visible on the ground floor. The sky is clear and blue.

MU4
The *second phase*
of Aire Park

The *key gateway*
to Aire Park

Seven Storey, 75,000 sq ft office building with retail at ground level

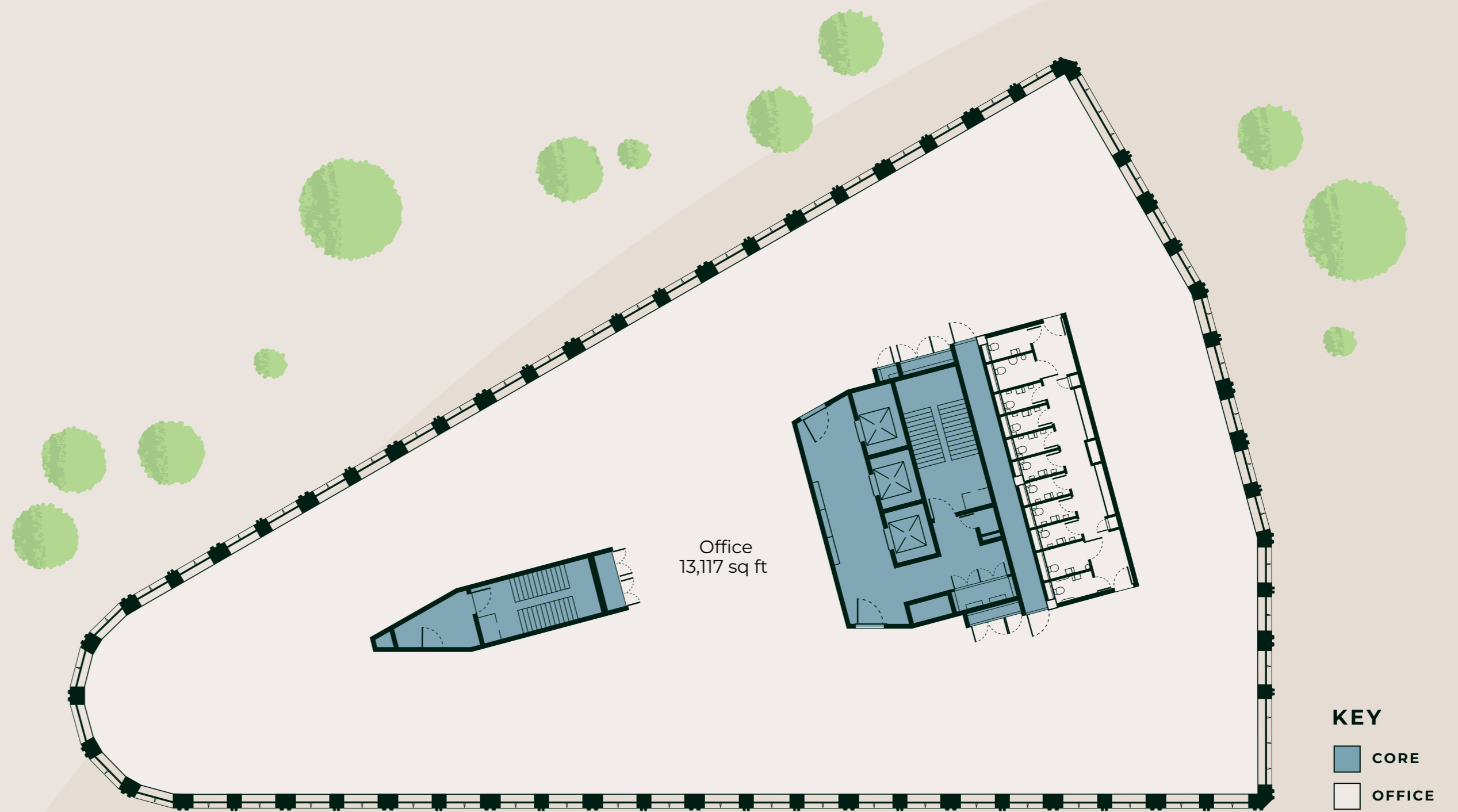
Modern, smart,
versatile *by nature*



ROOF

Available Space

LEVEL	SQFT (NIA)	SQM (NIA)
SIX	7,665	712
FIVE	13,117	1,219
FOUR	13,117	1,219
THREE	13,117	1,219
TWO	13,117	1,219
ONE	13,117	1,219
GROUND	1,221	113
TOTAL	74,470	6,919



TYPICAL FLOORPLATE



GROUND FLOOR

MU4
*The second phase
of Aire Park*



Grow
by nature

