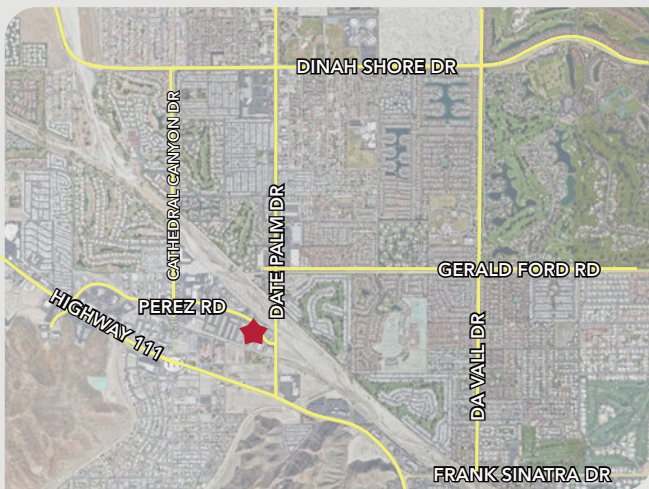


FOR LEASE

PEREZ PLAZA

68845-68895 PEREZ RD. | CATHEDRAL CITY, CA



PEREZ PLAZA

AVAILABLE NOW

UNIT H 1&2: 2,748 SF
\$4,400 per month

- Well kept property, nicely landscaped with attention-getting curb appeal
- Great tenant mix including a variety of local artists, service businesses and responsive ownership and management
- Retail/showroom space available with monument sign facing Perez

SHALYN MONTES
smontes@leedesert.com
760.346.2523
LIC #01844043

ARTHUR HOLLAND
aholland@leedesert.com
760.346.2577
LIC #00886270

All information furnished regarding property for sale, rental or financing is from sources deemed reliable, but no warranty or representation is made to the accuracy thereof and same is submitted to errors, omissions, change of price, rental or other conditions prior to sale, lease or financing or withdrawal without notice. No liability of any kind is to be imposed on the broker herein.



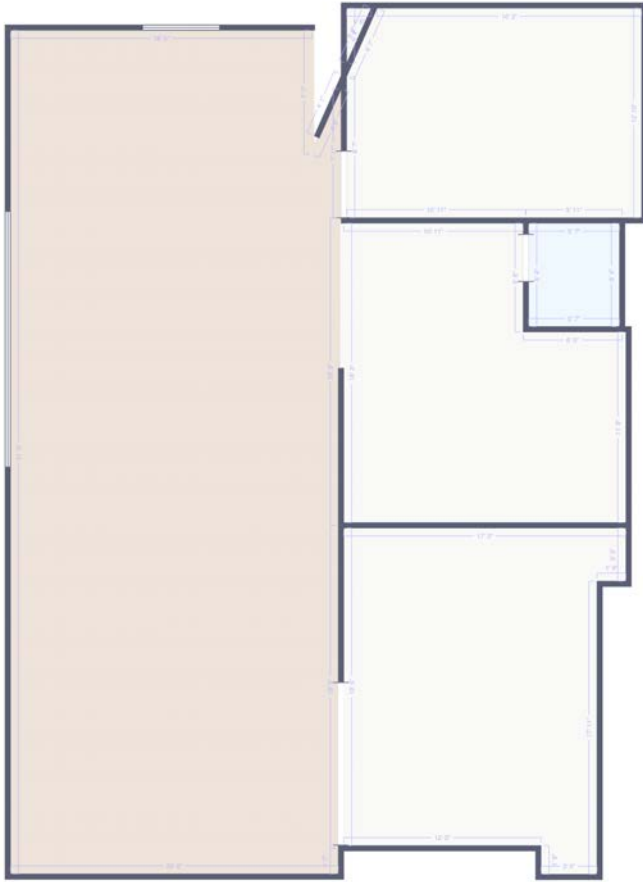
FOR LEASE

PEREZ PLAZA

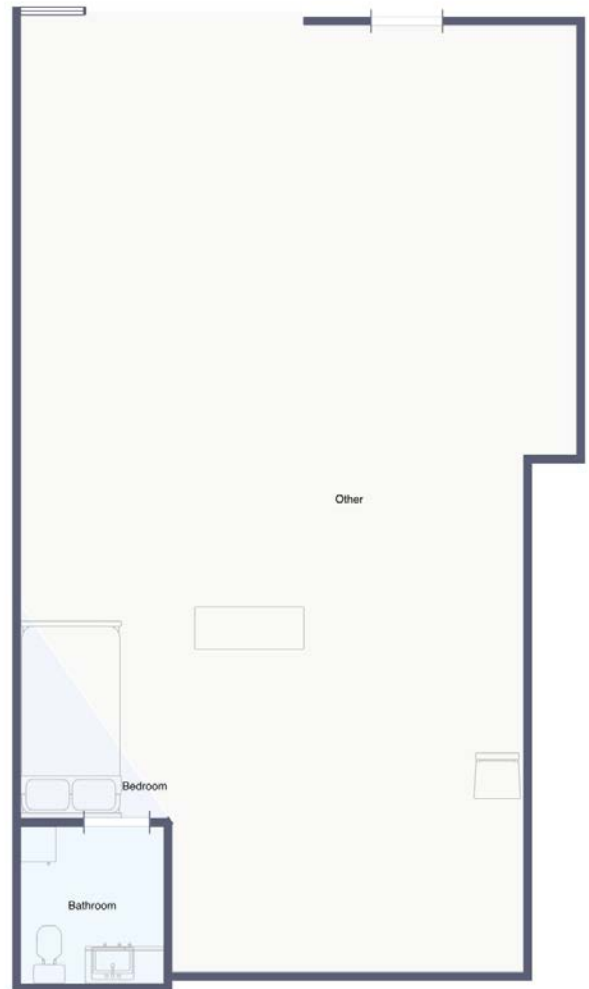
68845-68895 PEREZ RD. | CATHEDRAL CITY, CA

FLOOR PLANS

UNIT H 1&2 SHOWROOM FLOOR PLAN



UNIT H 1&2 WAREHOUSE FLOOR PLAN



SHALYN MONTES
smontes@leedesert.com
760.346.2523
LIC #01844043

ARTHUR HOLLAND
aholland@leedesert.com
760.346.2577
LIC #00886270

All information furnished regarding property for sale, rental or financing is from sources deemed reliable, but no warranty or representation is made to the accuracy thereof and same is submitted to errors, omissions, change of price, rental or other conditions prior to sale, lease or financing or withdrawal without notice. No liability of any kind is to be imposed on the broker herein.