

Cuboo

MORE THAN WORK



Cubo Derby

Pride Park



“Our teams really enjoy and thrive on the collaborative environment that the excellent Cubo site management staff create in each location, it’s a massive point of difference from other competitors in the flex office market”
Matt Gualer – CEO Alertive

Cubo Pride Park is located walking distance from Derby City Centre and is regarded as a principle location for businesses.

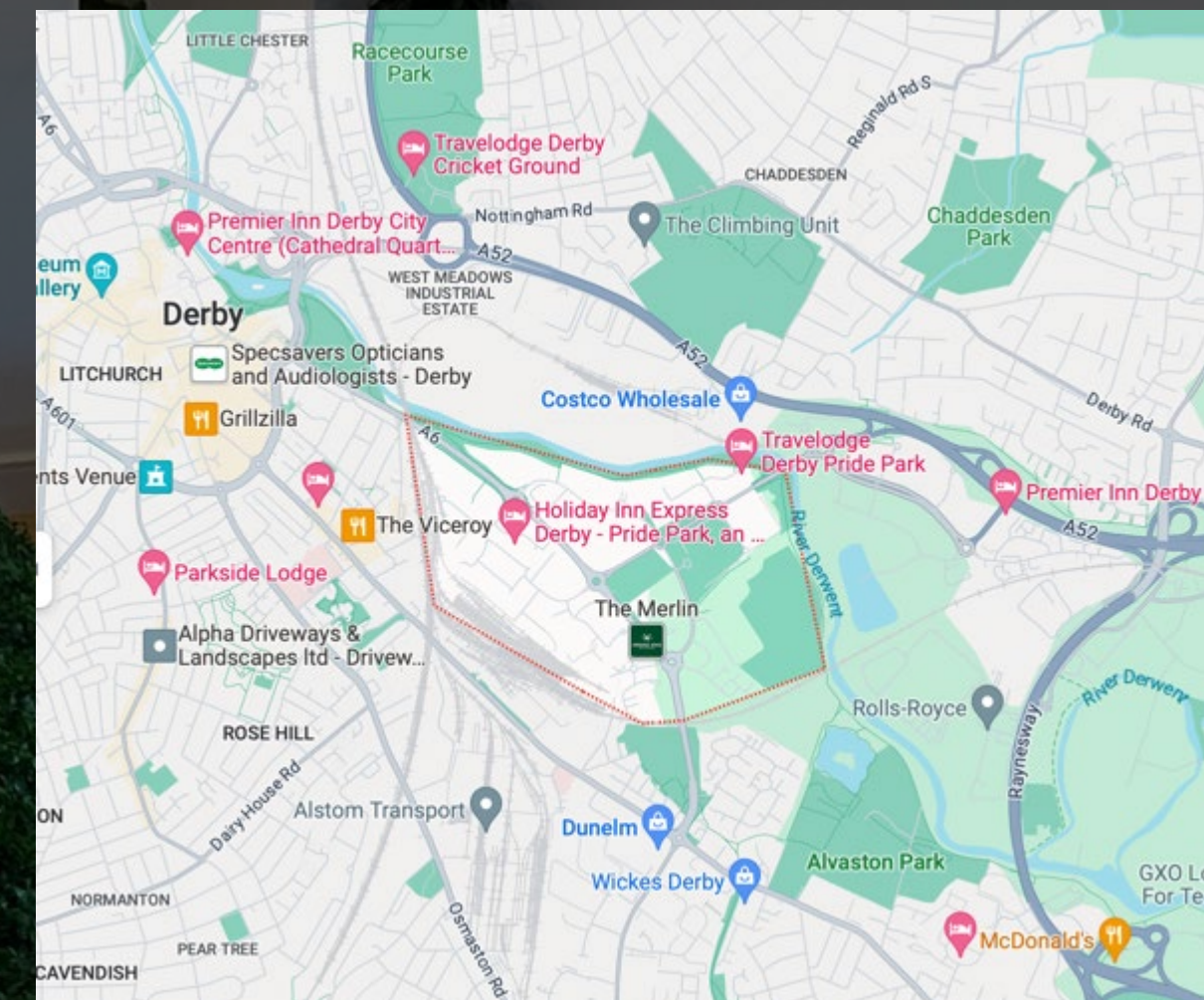
Benefiting from excellent public transport links with Derby train station situated just around the corner. There is also excellent access to A38/A50 and the A52 which provides direct access to J25 of the M1 which lies just 7 miles east.

The 20,000 sq ft building is over three floors. Upon entering the building, you are greeted by a spacious main reception area that exudes an inviting and welcoming vibe. Equipped with modern furnishings and state-of-the-art technology which ensures a seamless and comfortable check-in experience for visitors and guests. Adjacent to the reception area is the Barista Station, where all members and visitors can grab a freshly brewed cup of coffee, tea or a refreshing beverage. The Barista Station is designed to offer a comfortable space for you to unwind, work, network or simply take a break.

The meeting rooms are spacious, well-lit and equipped with the latest audio-visual equipment to ensure seamless communication and productivity. The large co-working space provides an open and flexible environment for individuals and teams to collaborate and work together.

The private offices range from 2 desks up to 150 desks, offering occupants the flexibility to choose the space that best suits their needs. The private offices are equipped with modern furnishings and the latest technology to enhance productivity and comfort.

Overall, the building is a perfect blend of form and function, offering a comfortable, modern and productive environment for its occupants.



Our Locations



CUBO BIRMINGHAM
2 Chamberlain Square
Birmingham
B3 3AX



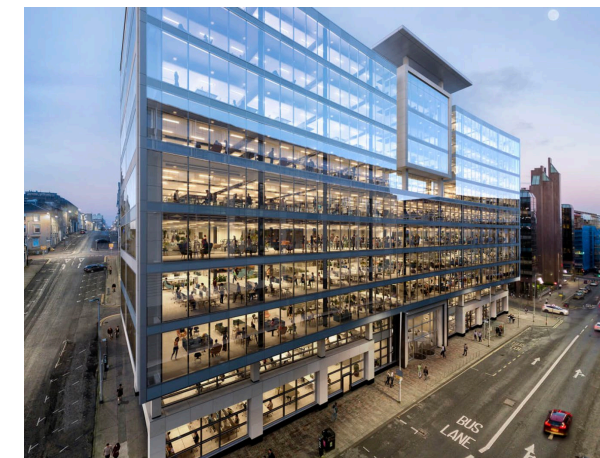
CUBO DERBY
The Old Post Office
Victoria Street
Derby
DE1 1EQ



CUBO DERBY
1 Park Place
Pride Park
Derby
DE24 8QR



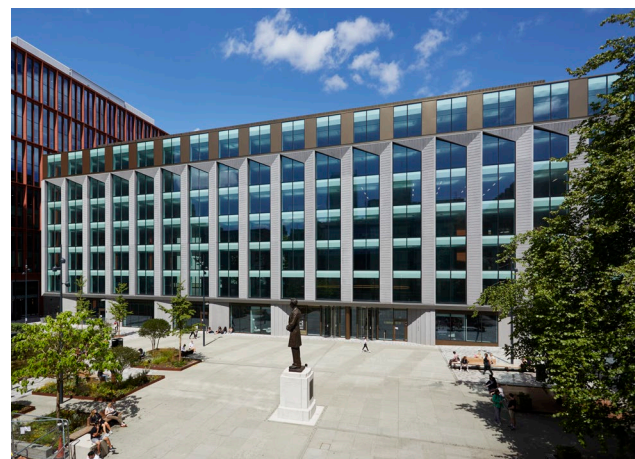
CUBO EDINBURGH
40 Princes Street
Edinburgh
EH 2BY



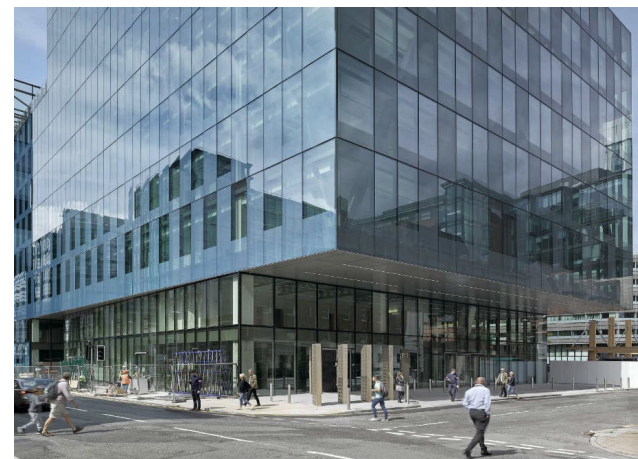
CUBO GLASGOW
Aurora
120 Bothwell Street
Glasgow
G2 7JS



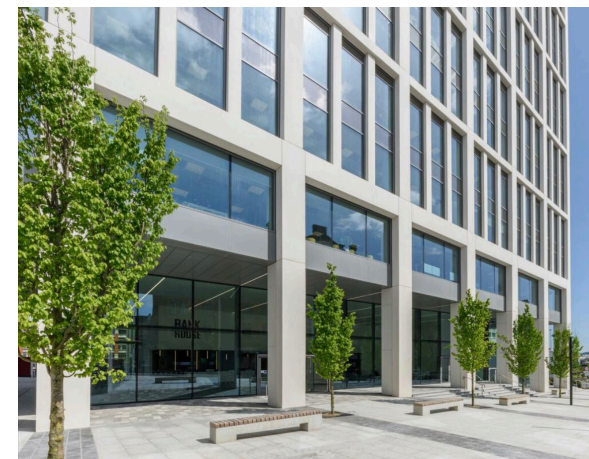
CUBO LEEDS
6 Wellington Place
Leeds
LS1 4AP



CUBO MANCHESTER
The Lincoln
Lincoln Square
Brazenose Street
Manchester
M2 5AD



CUBO MANCHESTER
No.1 Spinningfields
Manchester
M3 3EB



CUBO NEWCASTLE
Bank House
Pilgrim Street
Newcastle Upon Tyne
NE1 6SQ



CUBO NOTTINGHAM
Fenchurch House
12 King Street
Nottingham
NG1 2AS



CUBO NOTTINGHAM
Standard Court
Park Row
Nottingham
NG1 6GN



CUBO SHEFFIELD
38 Carver Street
Sheffield
S1 4FS

Cubo Member Benefits

Our memberships include:

- 24/7 access to all our locations
- Super fast internet
- Meeting room usage
- Desk, chair and lockable pedestal
- On-site barista and refreshments
- Use of hot desking and breakout space
- Bike storage and shower facilities
- Reception services
- Cleaning services
- Printing, scanning, photocopying
- Access to our other locations
- Social and networking events



Meeting Rooms

All Cubo sites have a mixture of large and small meeting rooms, which can be booked by members by the hour. Cubo members receive an allocation of meeting room credits every month, based on how many desks they have.

Cubo Community



In-House Events

All members will benefit from exclusive access to our in-house events and socials. An amazing networking opportunity to meet fellow members in the co-working area. A few of our events include; social hour and breakfast club.





Co-working Space

All Cubo members benefit from having access to the co-working, break-out spaces and meeting rooms at all our locations. Furnished with hot desk tables and chairs, sofa areas etc.



Kitchen Areas

All kitchen areas are equipped with fridges, top-of-the-range FRANKE coffee machines, microwaves, filtered hot and cold water, beer and fizz taps, specialty teas, sugars, milks, utensils, mugs and daily stocked selection of fruit and snacks.



Designated Desks

We pride ourselves on our Grade A fit-out spec, which includes exposed M&E, full glass doors and partitions with frosting and branding options, and hard wood or premium LVT flooring. Designated Desks* are situated in shared a private office which are furnished with desks, office chairs and lockable pedestals.
*Subject to location

Pricing

Hot Desk:

£199 per month (Monthly Rolling)

£175 per month (12 Month Contract)

Designated Desks
Available at:

Derby

£250

Nottingham Fenchurch House

£275

Sheffield

£275

Leeds

£325

Birmingham

£325

If you require multiple memberships, please contact enquiries@cubowork.com

All prices are exclusive of VAT



Contact Details

T: 0800 038 9797

E: enquiries@cubowork.com

www.cubowork.com

Cubo