

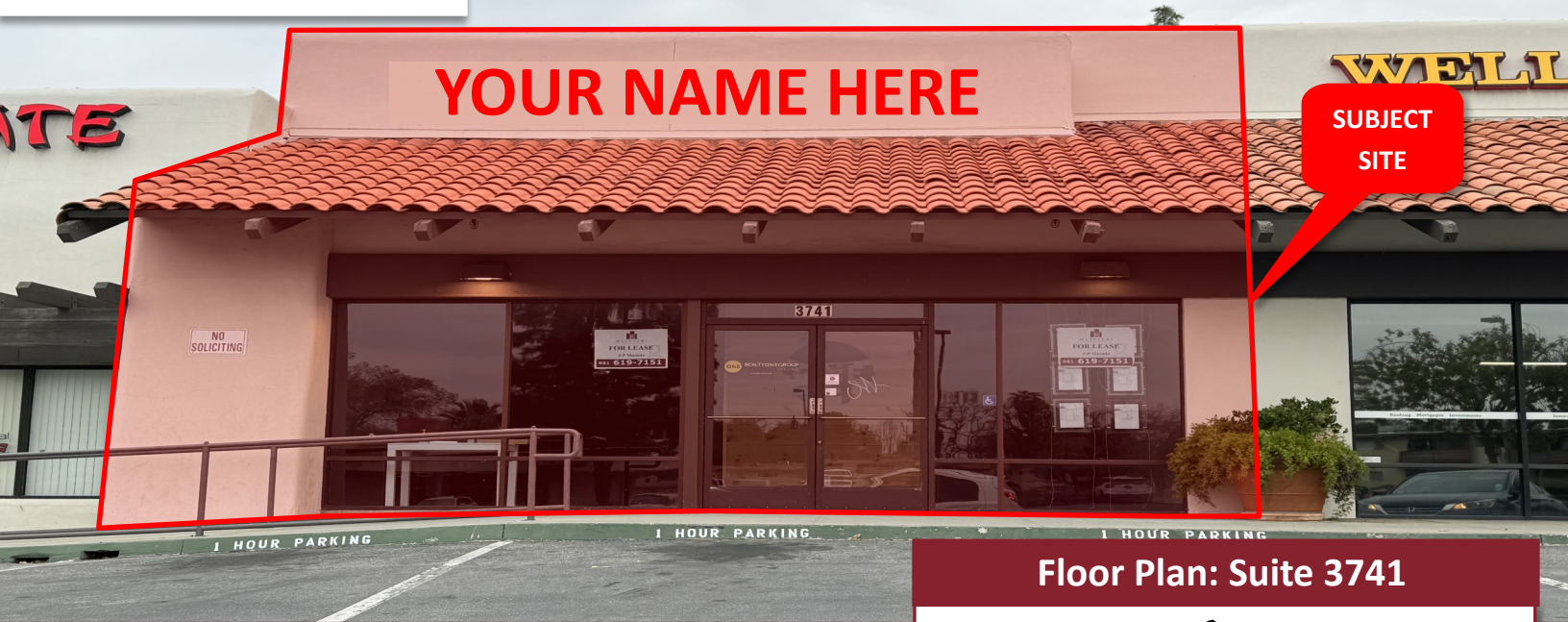
FOR LEASE ► TURNKEY OFFICE

3741 Columbus St., Bakersfield, CA 93306

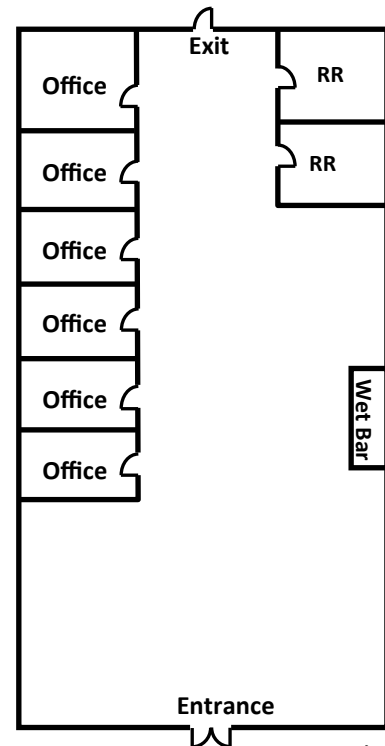
+/- 2,950 SF (approx.)



Available: Suite 3741



Floor Plan: Suite 3741



*Not to scale

PROPERTY DETAILS: SUITE 3741

- **ASKING RENT: NEGOTIABLE**
- **SPACE AVAILABLE: +/- 2,950SF (APPROX.)**
 - 6 PRIVATE OFFICES, 2 NEW RESTROOMS, AND COFFEE BAR
- EXCELLENT NORTHEAST BAKERSFIELD LOCATION
- COUNTRY CLUB PLAZA IS A 86,189SF RETAIL NEIGHBORHOOD CENTER
- ADJACENT TO WELLS FARGO, 93306'S HIGHEST DEPOSIT BANKING INSTITUTION (FDIC)
- 0.20 MILES FROM HIGHWAY 178

Co-Tenants Include:



9810 Brimhall Road

Bakersfield, CA 93312

(661) 327-1200

www.oliviericommercial.com

For more information, please contact:

J-P MASUDA

Lic. 01947962

(661) 617-1849

JPMasuda@oliviericommercial.com