



COMMERCIAL

Retail Space Available for Lease

HIGHLIGHTS

- Price: \$4,146
- SQFT: 2,764
- SQFT Lot: 31,799
- Price per SQFT: \$1.50
- Year Built: 1999
- Property Type: Retail
- Listing ID: SN25191120
- Parcel #: 006150118000
- County: Butte



241 W East Ave,
Chico, CA 95973

www.selectcommercialgroup.com

CENTURY 21
COMMERCIAL
Select Real Estate

The award-winning Select Group of Real Estate Companies provide exceptional customer service at the local, regional, national, and international level, our experienced commercial real estate agents are here to discuss your real estate growth.

©2024 Century 21 Real Estate LLC. CENTURY 21® and CENTURY 21 Commercial® are registered trademarks owned by Century 21 Real Estate LLC. Each office is independently owned and operated.



COMMERCIAL

241 W East Ave



This is a rare opportunity to lease a highly visible retail space in a prime location within a busy shopping center anchored by Raley's. Previously operated as a sandwich and ice cream shop, the space is well-equipped and ready for a variety of retail uses. There are two built-in walk-in refrigerators, floor drains, multiple sinks, and two restrooms, providing a strong foundation for food service or other retail operations. The current setup includes a wide open front room perfect for customer interaction or product display, along with a large back room that functions well as a storage or prep area.

www.selectcommercialgroup.com

**CENTURY 21
COMMERCIAL**

Select Real Estate

The award-winning Select Group of Real Estate Companies provide exceptional customer service at the local, regional, national, and international level, our experienced commercial real estate agents are here to discuss your real estate growth.

©2024 Century 21 Real Estate LLC. CENTURY 21® and CENTURY 21 Commercial® are registered trademarks owned by Century 21 Real Estate LLC. Each office is independently owned and operated.



COMMERCIAL

Interior Photos



www.selectcommercialgroup.com

**CENTURY 21
COMMERCIAL**

Select Real Estate

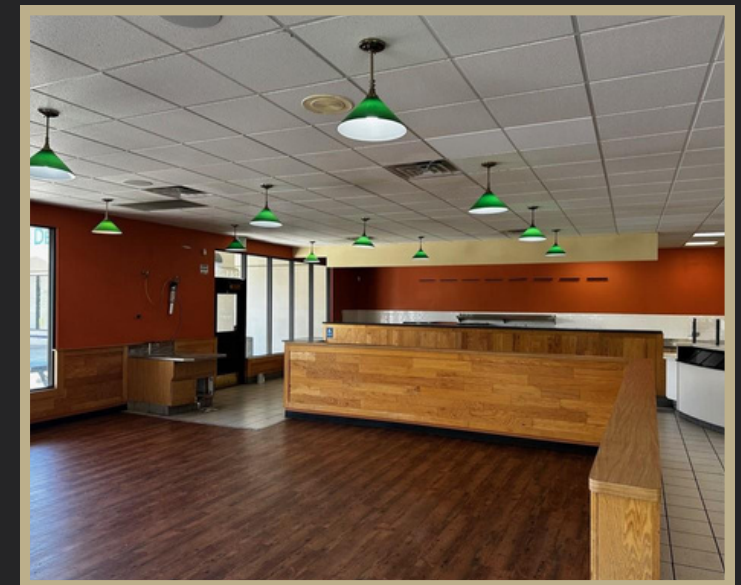
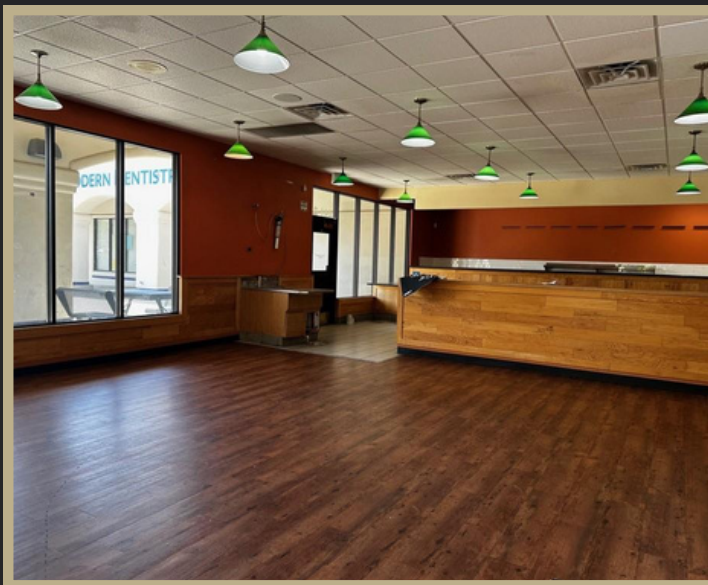
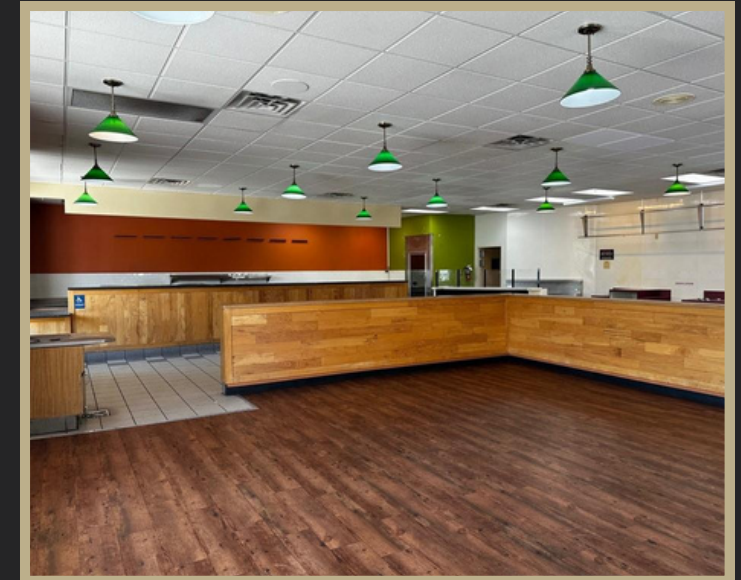
The award-winning Select Group of Real Estate Companies provide exceptional customer service at the local, regional, national, and international level, our experienced commercial real estate agents are here to discuss your real estate growth.

©2024 Century 21 Real Estate LLC. CENTURY 21® and CENTURY 21 Commercial® are registered trademarks owned by Century 21 Real Estate LLC. Each office is independently owned and operated.



COMMERCIAL

Interior Photos



www.selectcommercialgroup.com

**CENTURY 21
COMMERCIAL**

Select Real Estate

The award-winning Select Group of Real Estate Companies provide exceptional customer service at the local, regional, national, and international level, our experienced commercial real estate agents are here to discuss your real estate growth.

©2024 Century 21 Real Estate LLC. CENTURY 21® and CENTURY 21 Commercial® are registered trademarks owned by Century 21 Real Estate LLC. Each office is independently owned and operated.



COMMERCIAL[®]

City Overview

City of Chico

Chico is home to a thriving local economy with a strong emphasis on community, making it an attractive place for businesses. The city boasts a diverse range of industries, including healthcare, education, and technology, with a steady flow of talent from California State University, providing a skilled workforce. For business owners, the city's central location within Northern California, business-friendly atmosphere, affordable housing, and vibrant cultural scene make it an attractive destination.

Chico is also known for its beautiful natural landscapes, including Bidwell Park—one of the largest municipal parks in the country—Chico offers ample opportunities for outdoor recreation, from hiking and biking to picnicking and swimming, creating an ideal work-life balance.



www.selectcommercialgroup.com

**CENTURY 21
COMMERCIAL[®]**

Select Real Estate

The award-winning Select Group of Real Estate Companies provide exceptional customer service at the local, regional, national, and international level, our experienced commercial real estate agents are here to discuss your real estate growth.

©2024 Century 21 Real Estate LLC. CENTURY 21[®] and CENTURY 21 Commercial[®] are registered trademarks owned by Century 21 Real Estate LLC. Each office is independently owned and operated.



COMMERCIAL[®]

For More Information
Contact Me:



Kimberly Shaffer

DRE # 01415693

530-680-7685

Kimsellschico@gmail.com

1101 El Monte Ave, Chico CA 95928

www.selectcommercialgroup.com

**CENTURY 21
COMMERCIAL[®]**

Select Real Estate

The award-winning Select Group of Real Estate Companies provide exceptional customer service at the local, regional, national, and international level, our experienced commercial real estate agents are here to discuss your real estate growth.

©2024 Century 21 Real Estate LLC. CENTURY 21[®] and CENTURY 21 Commercial[®] are registered trademarks owned by Century 21 Real Estate LLC. Each office is independently owned and operated.