

MEDICAL OFFICE FOR LEASE

824 Greenbrier Parkway
Chesapeake, VA, 23320



ABOUT PROPERTY

- ± 2,462 SF medical office
- Greenbrier Parkway signage exposure
- 56,761 VPD along Greenbrier Parkway (2025)
- Abundant parking (43 shared spaces)
- Adjacent to Chesapeake City Park
- Lease Rate: \$23.50 psf, net of electric and janitorial
- Available April 2026



For more information:

RYAN KING

757.640.8210

RyanKing@HarveyLindsay.com

JONATHAN LEVIN

757.647.8530

JonathanLevin@HarveyLindsay.com

HARVEY LINDSAY

COMMERCIAL REAL ESTATE

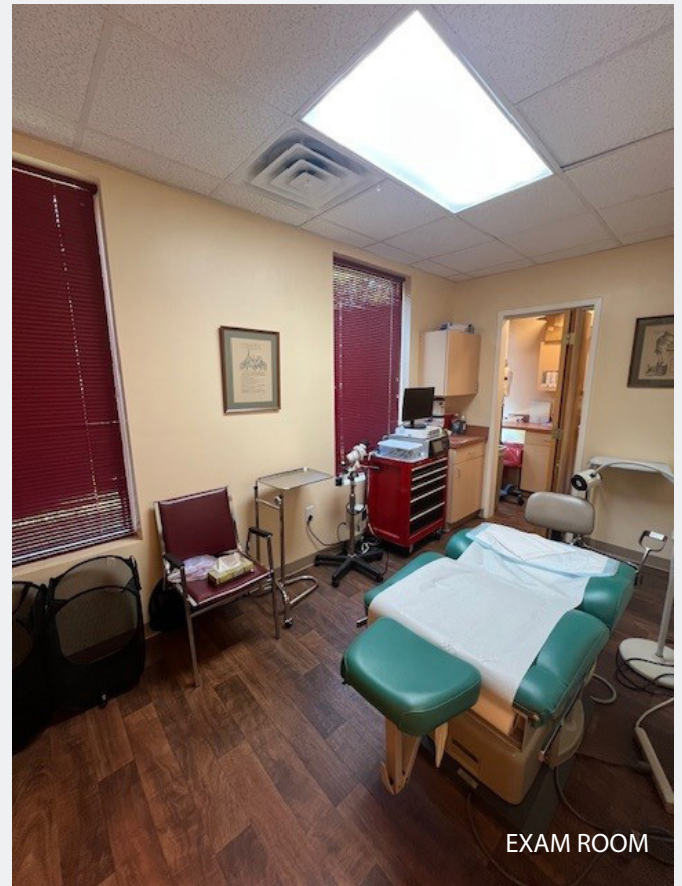
www.harveylindsay.com

INTERIOR PHOTOS

824 Greenbrier Pkwy, Chesapeake, VA



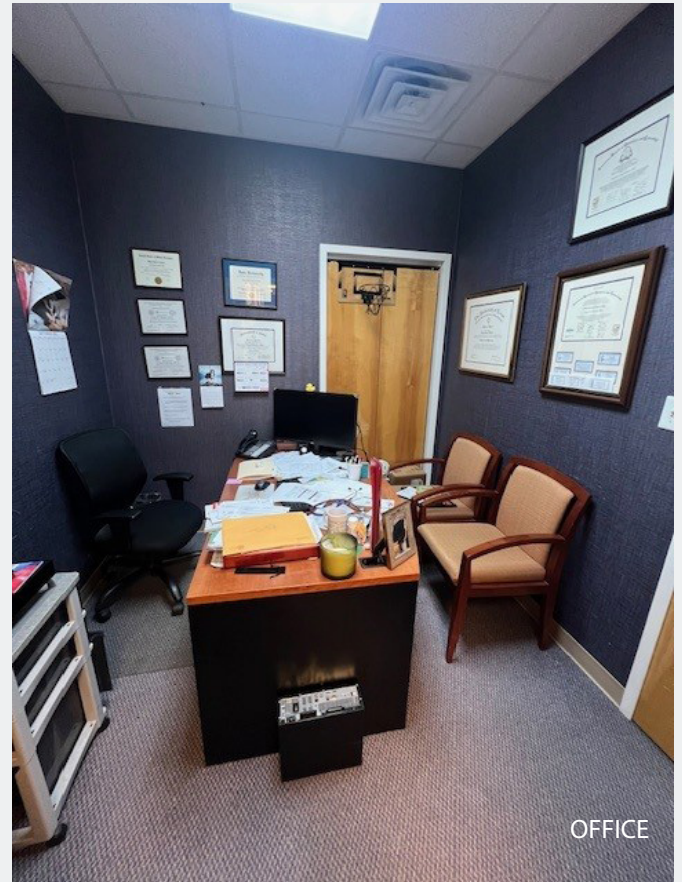
EXAM ROOM



EXAM ROOM



OFFICE

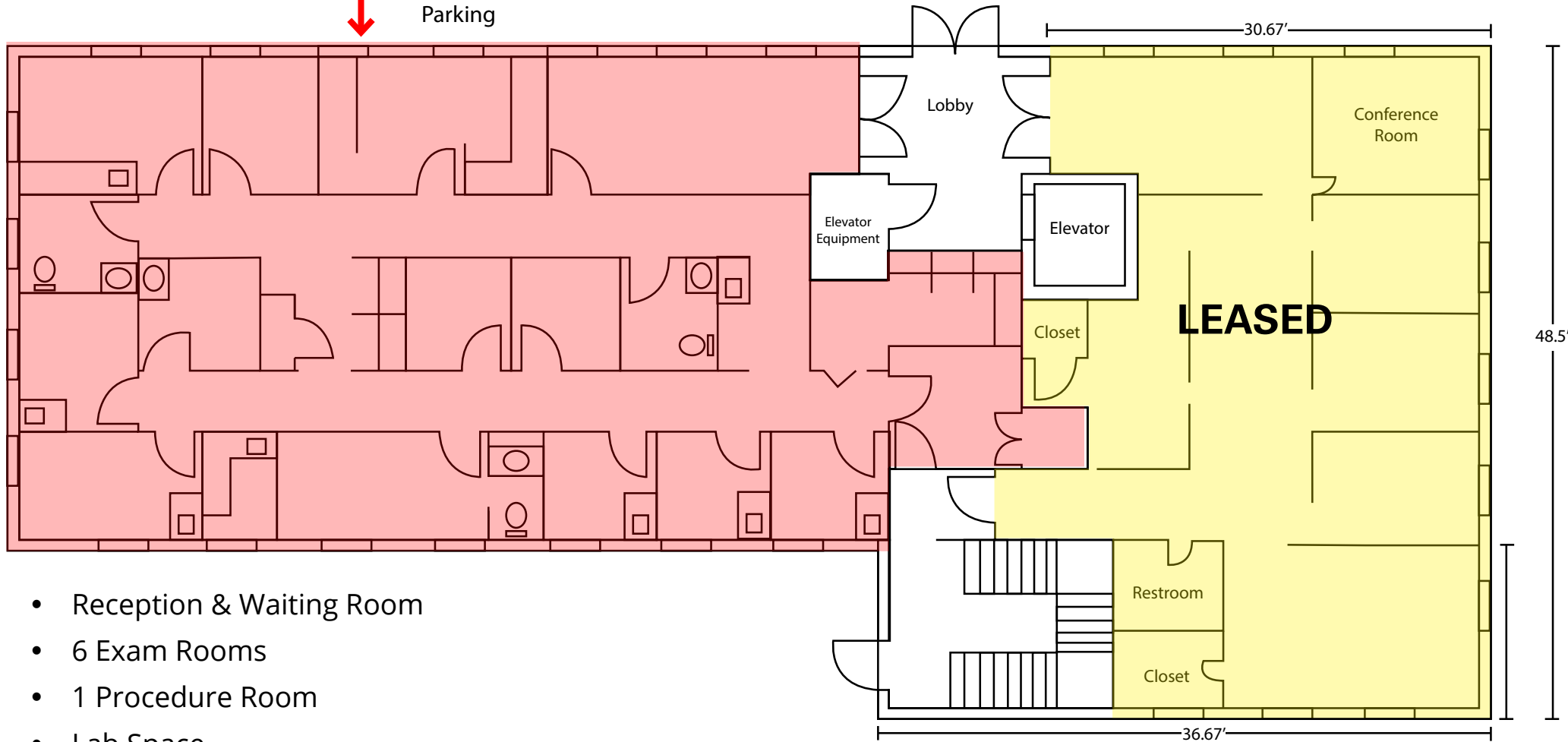


OFFICE

AVAILABLE ± 2,462 SF



Parking



- Reception & Waiting Room
- 6 Exam Rooms
- 1 Procedure Room
- Lab Space
- 4 Offices & Additional Work Stations
- 3 Restrooms
- Breakroom

AREA OVERVIEW

824 Greenbrier Pkwy, Chesapeake, VA



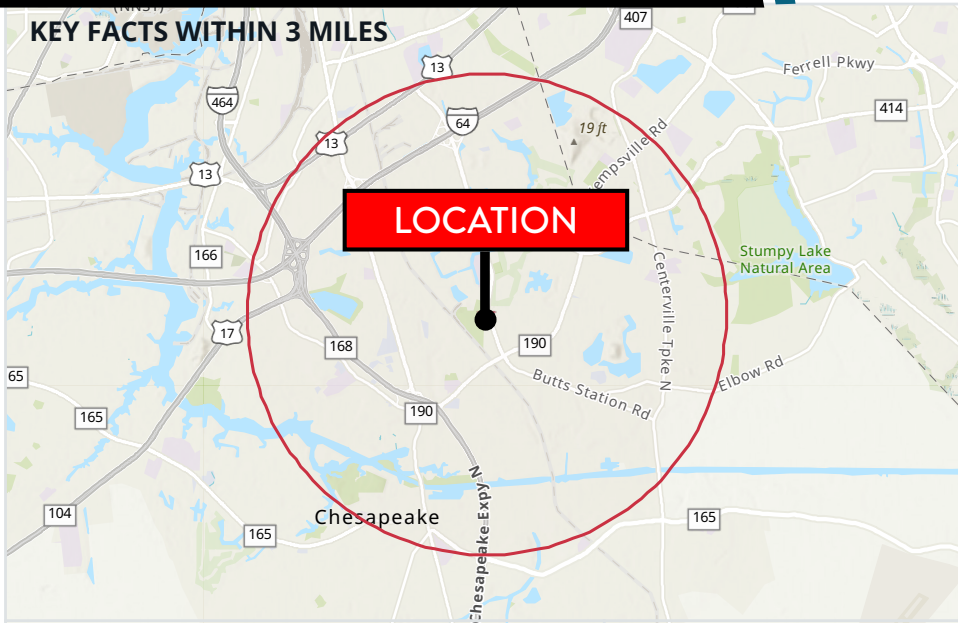
HARVEY LINDSAY 999 Waterside Drive • Suite 1400
 COMMERCIAL REAL ESTATE Norfolk, Virginia 23510
 757-640-8700
www.HarveyLindsay.com

RYAN KING
 757.640.8210
RyanKing@HarveyLindsay.com

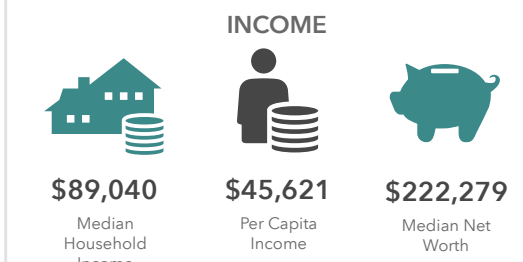
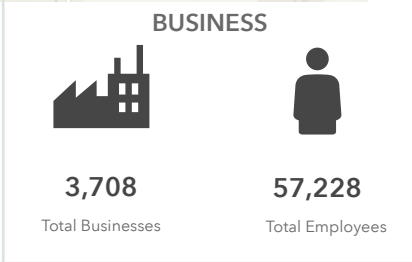
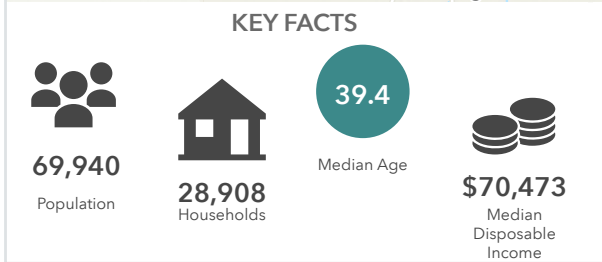
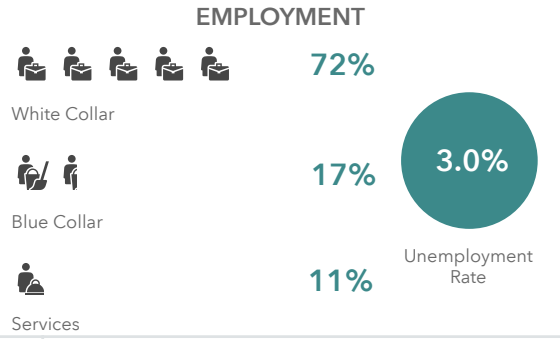
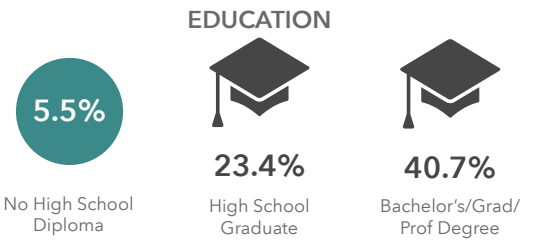
JONATHAN LEVIN
 757.647.8530
JonathanLevin@HarveyLindsay.com

DEMOGRAPHICS

824 Greenbrier Pkwy, Chesapeake, VA



LOCATION



What's in My Community?

Places that make your life richer and community better

824 Greenbrier Pkwy, Chesapeake, Virginia, 23320
3 miles



HARVEY LINDSAY COMMERCIAL REAL ESTATE
999 Waterside Drive • Suite 1400
Norfolk, Virginia 23510
757-640-8700
www.HarveyLindsay.com

RYAN KING
757.640.8210
RyanKing@HarveyLindsay.com

JONATHAN LEVIN
757.647.8530
JonathanLevin@HarveyLindsay.com