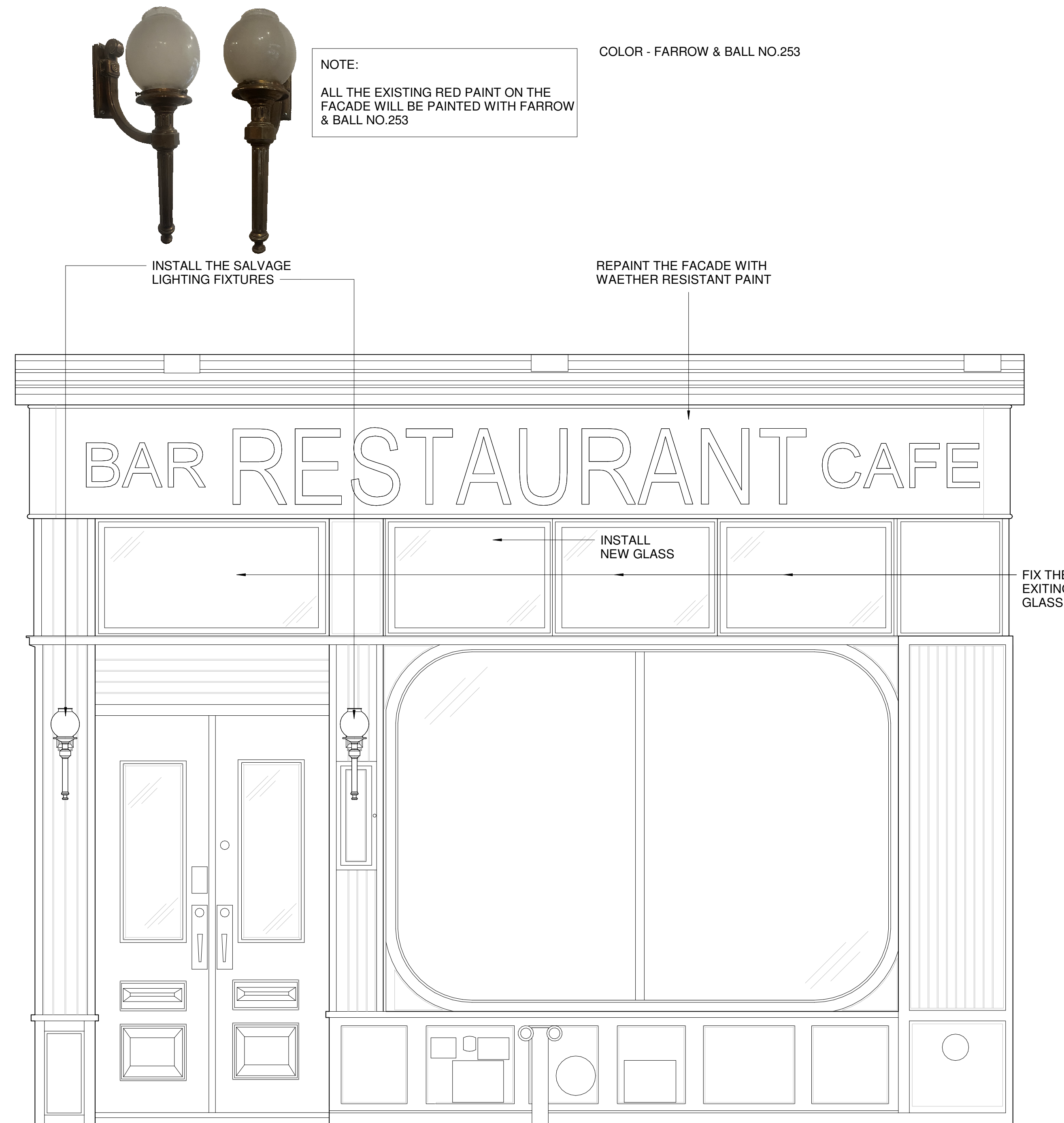


1 EXISTING STOREFRONT - ENLARGED ELEVATION
 3/4" = 1'-0"



2 PROPOSED STOREFRONT - ENLARGED ELEVATION
 3/4" = 1'-0"

NO.	Revision	Date:

PROJECT
124 CHAMBERS
 124 Chambers Street, New York, NY 10007

DRAWING TITLE
ENLARGED ELEVATION

SEAL & SIGNATURE	Scale: AS NOTED
	Date: 11/10/23
	Drawn by: HZ
	Checked by: Checker
	Page: 5 of 5
DWG No.:	A-300.00
DOB NYC NUMBER	