

LA COSTA MEADOWS BUSINESS CENTER

1665 S. Rancho Santa Fe Road - San Marcos, CA 92078

FOR SUBLEASE: INDUSTRIAL SUITES 2,225 TO 4,467 SF



[CLICK TO VIEW
VIRTUAL TOUR - SUITE A1](#)

[CLICK TO VIEW
VIRTUAL TOUR - SUITE C1](#)



Located within the Prestigious
La Costa Meadows Submarket.

Project Highlights

Premium Location

- Located within the prestigious La Costa Meadow Meadows Submarket which is a highly sought after 1,370,000 SF industrial/flex submarket.
- This small industrial pocket was built to service upscale communities such as Encinitas, Carlsbad, south Vista, San Elijo Hills and Rancho Santa Fe.
- Excellent demographics: Estimated Household Income (5 mile) - \$152,034 and population (5 mile) - 199,810 people.

Quality Construction

- Six 1-story industrial buildings and two 2-story industrial/flex/office buildings.
- The buildings feature tilt-up construction with varied bay sizes that accommodate a wide range of configurations.
- Flexible size options with ability to accommodate tenant expansions overtime.
- Grade level and dock high loading options.



Availability Overview

Industrial Availability

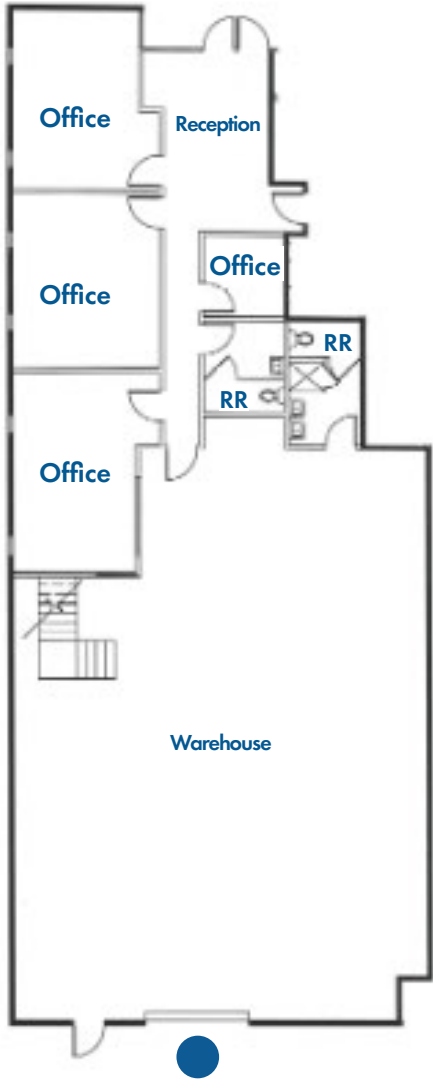
Building	Suite	Size	Lease Rate	CAM/SF	Sublease Term	Availability
1665 S. Rancho Santa Fe Rd	A1	4,467 SF	Contact Agents	\$0.15/SF	October 31, 2026	Available
1665 S. Rancho Santa Fe Rd	C1	2,225 SF	Contact Agents	\$0.15/SF	October 31, 2026	Available



Industrial Availability

[CLICK TO VIEW VIRTUAL TOUR - SUITE A1](#)

Address:	1665 S. Rancho Santa Fe Rd, Suite A1
Size:	4,467 SF
Base Rent:	Contact Agents
CAM:	\$0.15/SF
Availability:	Available
Sublease Term:	October 31, 2026 Direct long term lease available with landlord.
Comments:	Space consists of a reception, 4 private offices, 2 restrooms, and remainder warehouse. Approximately 924 SF of mezzanine included in the square footage.



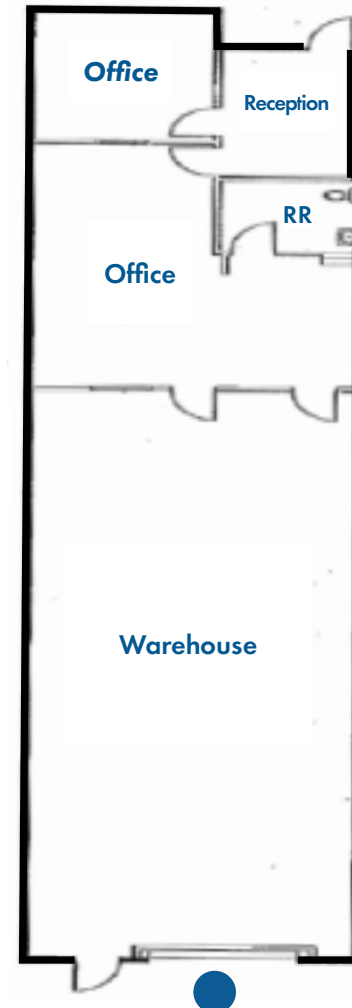
 = Grade Level Loading



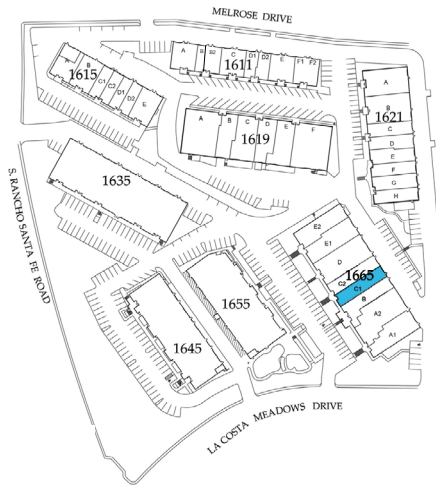
Industrial Availability

[CLICK TO VIEW
VIRTUAL TOUR - SUITE C1](#)

Address:	1665 S. Rancho Santa Fe Rd, Suite C1
Size:	2,225 SF
Base Rent:	Contact Agents
CAM:	\$0.15/SF
Availability:	Available
Sublease Term:	October 31, 2026 Direct long term lease available with landlord.
Comments:	Suite consists of a reception, 1 private office, open office area, 1 restroom, and remainder warehouse.



 = Grade Level Loading



Surrounding Tenants Aerial

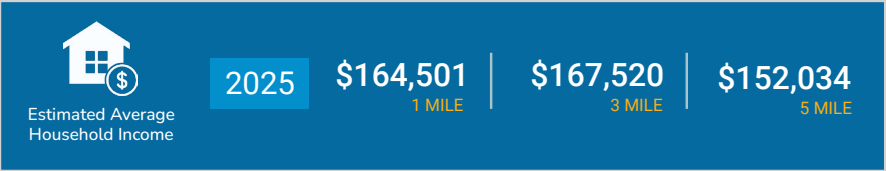
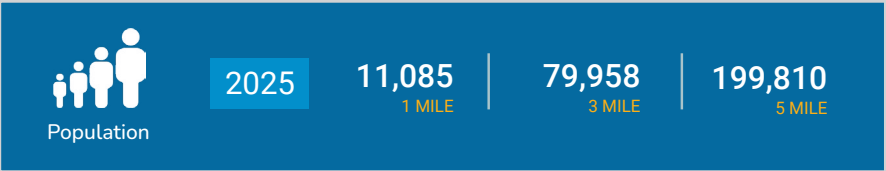
This unique 1,370,000 SF industrial submarket is home to major companies like Nordic Naturals, M bar C Construction, Falmat and Hunter Industries. Hunter Industries, one of North County's largest companies, is headquartered in La Costa Meadows and occupies approximately one third of the submarkets industrial footprint totaling approximately 429,736 SF.



Location Map



Demographics & Submarket Statistics - La Costa Meadows



Product Type	# Buildings	Size (SF)	% of Submarket
MFG/DIST	14	468,937	34.25%
FLEX/R&D	15	490,316	35.81%
IMT	17	410,097	29.95%
Total Industrial	46	1,369,350	100.00%



LA COSTA MEADOWS BUSINESS CENTER

1665 S. Rancho Santa Fe Road - San Marcos, CA 92078

Isaac Little
ilittle@lee-associates.com
760.929.7862
CalDRE #01702879

Marko Dragovic
mdragovic@lee-associates.com
760.929.7839
CalDRE #01773106

Olivia Baffert
obaffert@lee-associates.com
760.448.1376
CalDRE # 02211874

