

5165 COMMERCIAL CIRCLE, UNIT C

FOR SUBLEASE | INDUSTRIAL WAREHOUSE WITH OFFICES IN CONCORD, CA

TCP
TOUCHSTONE
COMMERCIAL PARTNERS



CHRISTIAN DIGGS

415.710.0932 | cdiggs@tcp.com

JACK DYKE

415.518.7523 | jdyke@tcp.com

WWW.TCPRE.COM

PROPERTY SUMMARY

ADDRESS

5165 Commercial Circle, Unit C, Concord, CA 94520

AVAILABLE SPACE

+/- 4,466 Square Feet

RENTAL RATE

\$1.58 / SF / Month, Modified Gross

ZONING

OBJ

LEASE EXPIRATION DATE

December 23, 2027

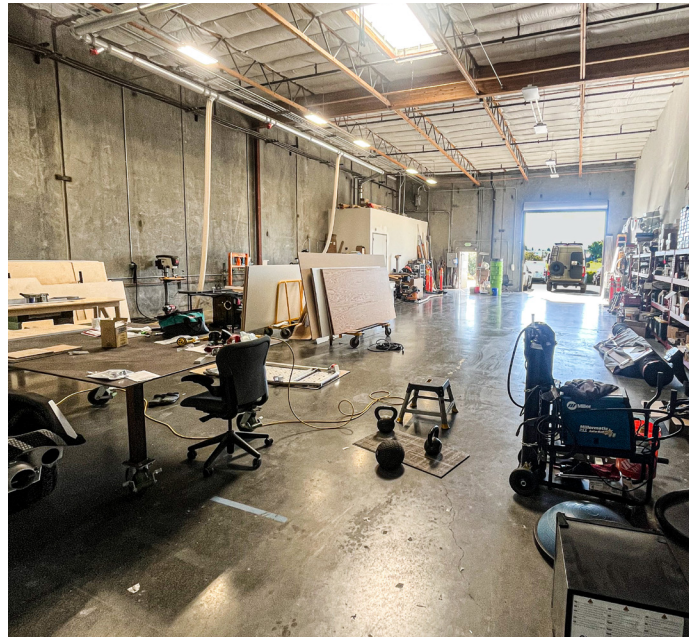
AVAILABLE

In 60 Days

BUILDING ATTRIBUTES

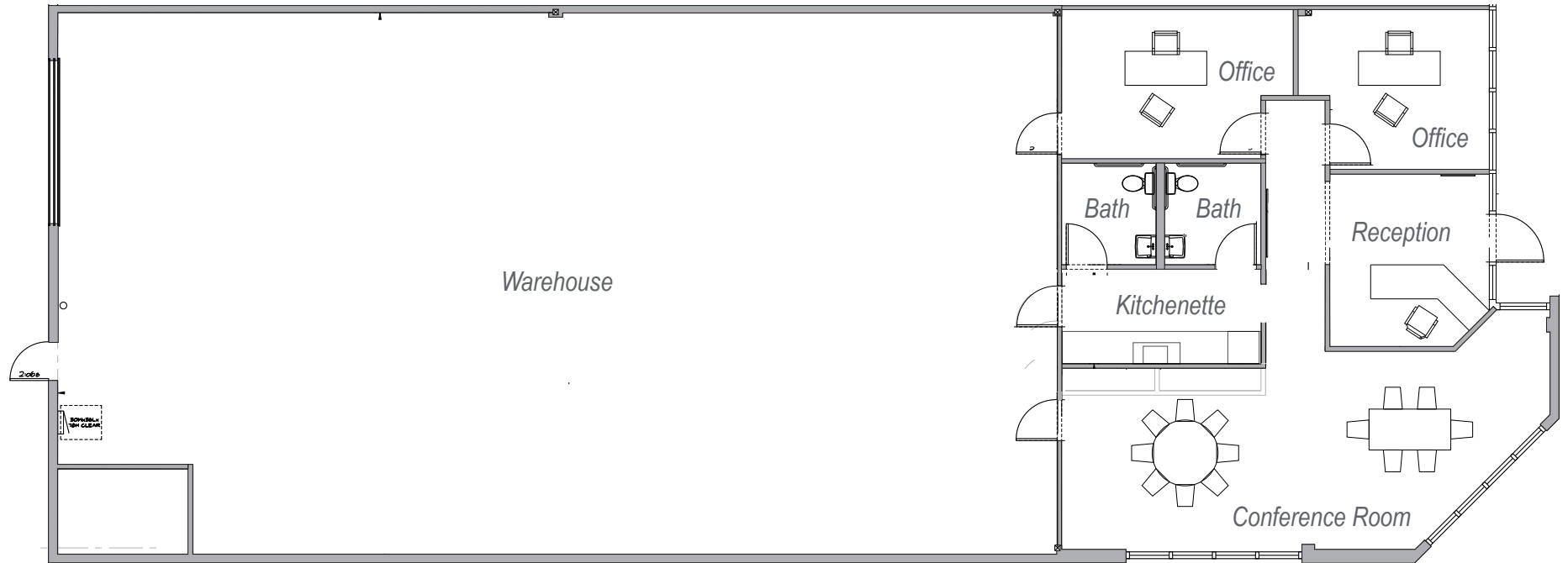
- + 200 amps 3 phase
- + One (1) Roll-Up Door
- + 20' Clear Height
- + Eight (8) Assigned Parking Spaces
- + Additional Parking Spaces on Site





FLOOR PLAN

+/- 4,466 Square Feet



LOCATION OVERVIEW

Desirable location in Concord industrial corridor, centrally located along the CA-4 with easy access to all corners of the greater Bay Area.

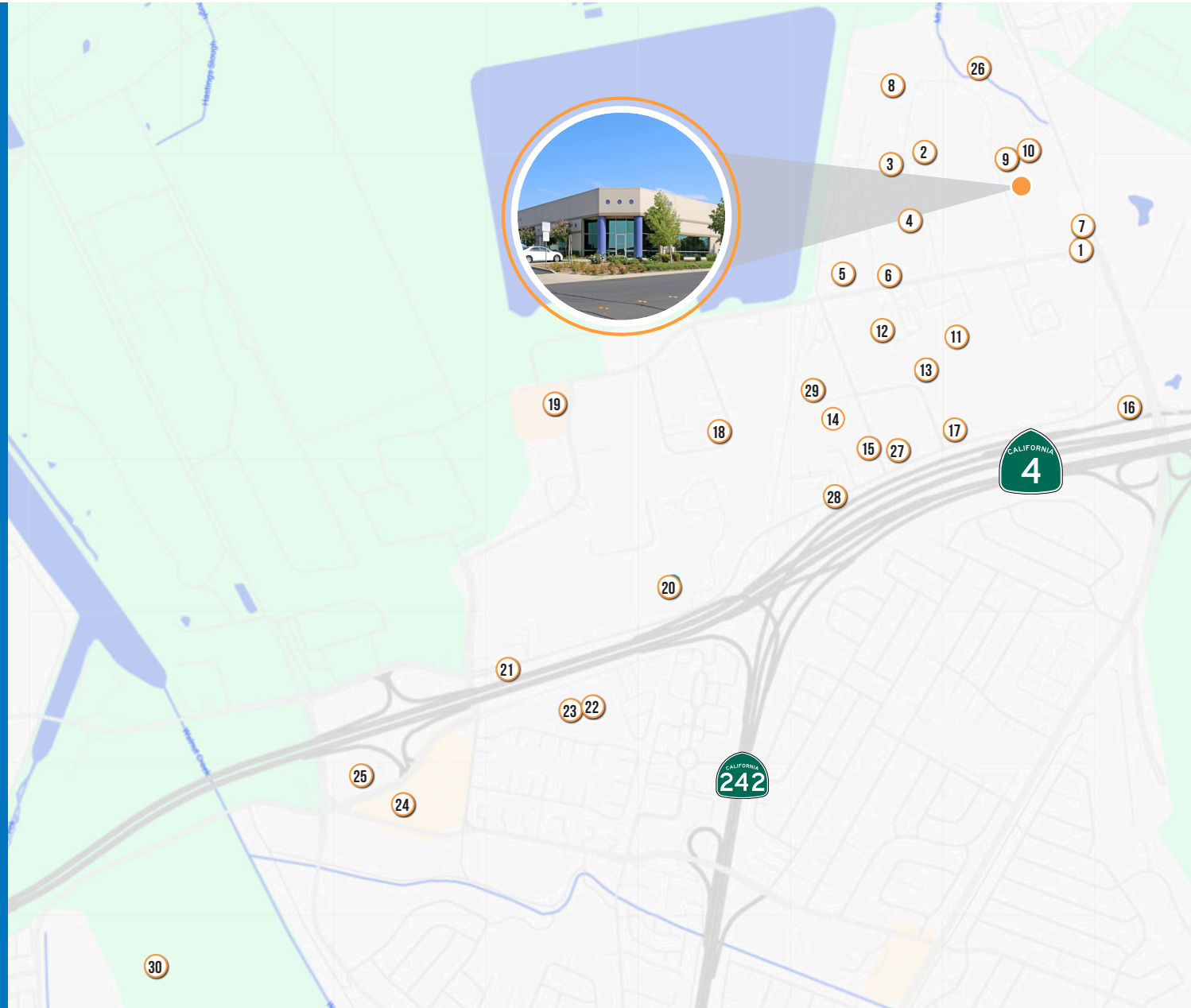
- + SAN FRANCISCO - 33 Miles
- + OAKLAND - 25 Miles
- + OAKLAND AIRPORT - 34 Miles
- + PORT OF OAKLAND - 25 Miles
- + SAN MATEO - 9 Miles

- + OAKLAND INTERMODAL FACILITY - 27 Miles
- + HIGHWAY CA-4 - 0.8 Miles
- + HIGHWAY I-680 - 3.5 Miles
- + BENICIA-MARTINEZ BRIDGE - 7.1 Miles



NEARBY AMENITIES

- 1 Standard Plumbing Supply
- 2 Pacific Coast Farmers' Market
- 3 Minuteman Press
- 4 Concrete Exchange
- 5 Brickyard Building Materials
- 6 Vestis
- 7 Majestic Floors Inc
- 8 Patterson Dental
- 9 FASTSIGNS of Concord
- 10 Solutionz, Inc.
- 11 Freschi Service Experts
- 12 Resawn Lumber
- 13 Kinetico by AAA Water Systems
- 14 Grainger Industrial Supply
- 15 Capo Fireside
- 16 Bear Attack USA
- 17 HOT ROD PART SHOP
- 18 Epidemic Ales
- 19 North Park Deli
- 20 Auto-Chlor System
- 21 Lowe's Home Improvement
- 22 Public Storage
- 23 SCP Distributors LLC
- 24 Solano Swap Meet
- 25 Scandinavian Designs Furniture
- 26 The Moulding Company
- 27 Innersense Organic Beauty
- 28 Ashby Lumber
- 29 California Shingle & Shake Co
- 30 Buchanan Field Airport



5165 COMMERCIAL CIRCLE



Corp. Lic. 01112906
www.tcppe.com

CHRISTIAN DIGGS DRE # 1865276
415.710.0932 | cdiggs@tcppe.com

JACK DYKE DRE # 02255631
415.518.7523 | jdyke@tcppe.com

This document has been prepared by Touchstone Commercial Partners for advertising and general information only. Touchstone Commercial Partners makes no guarantees, representations or warranties of any kind, expressed or implied, regarding the information including, but not limited to, warranties of content, accuracy and reliability. Any interested party should undertake their own inquiries as to the accuracy of the information. Touchstone Commercial Partners excludes unequivocally all inferred or implied terms, conditions and warranties arising out of this document and excludes all liability for loss and damages arising there from. This publication is the copyrighted property of Touchstone Commercial Partners and/or its licensor(s). ©2026. All rights reserved.