

FOR LEASE



John Bucher
Partner
T 949.468.2246
C 949.463.5672

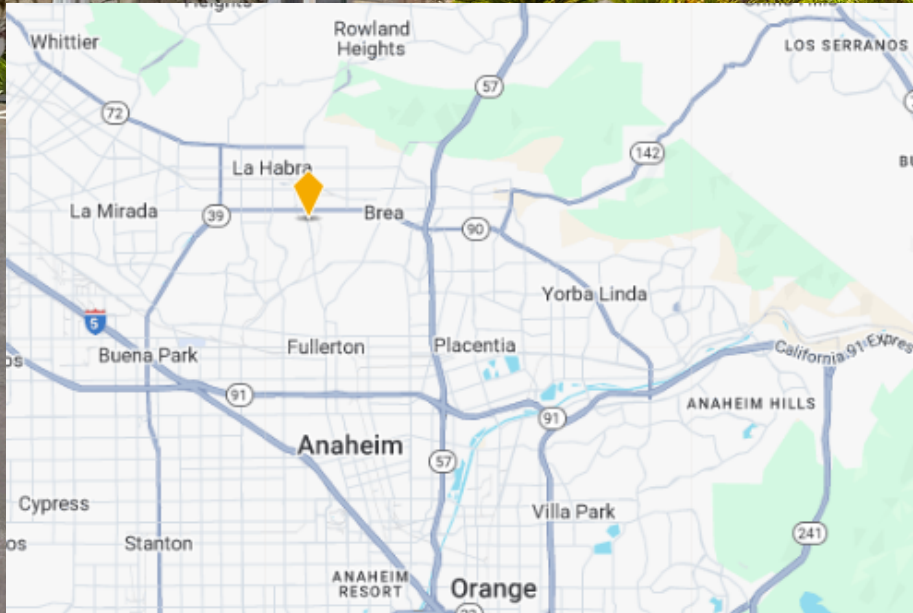
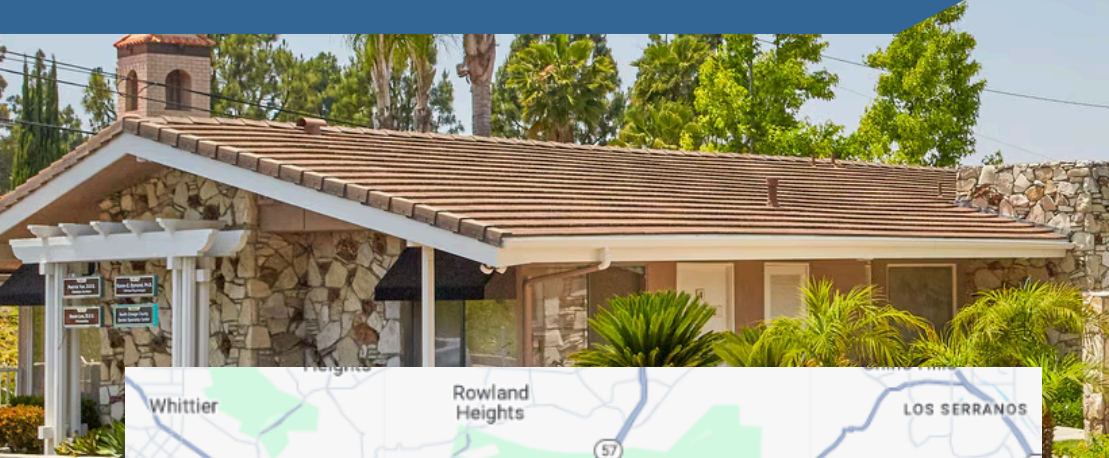
Paulina Salazar
Senior Associate
T 714.244.7310
C 714.244.7310



1480
S. HARBOR BLVD
LA HABRA, CA 90631

1480

S. HARBOR BLVD



Suite 10

(1,066 SF) Medical Office

Suite 3

(918 SF) Dental Office

- Prime ground floor medical suite with easy patient access
- Abundant on-site parking for patients and staff convenience
- High-visibility Harbor Boulevard location
- Actively managed property with a responsive, engaged landlord
- Medical-ready infrastructure with plumbing, accessibility, and flexible layouts

John Bucher
Partner

T 949.468.2246
C 949.463.5672

Paulina Salazar
Senior Associate

T 714.244.7310
C 714.244.7310

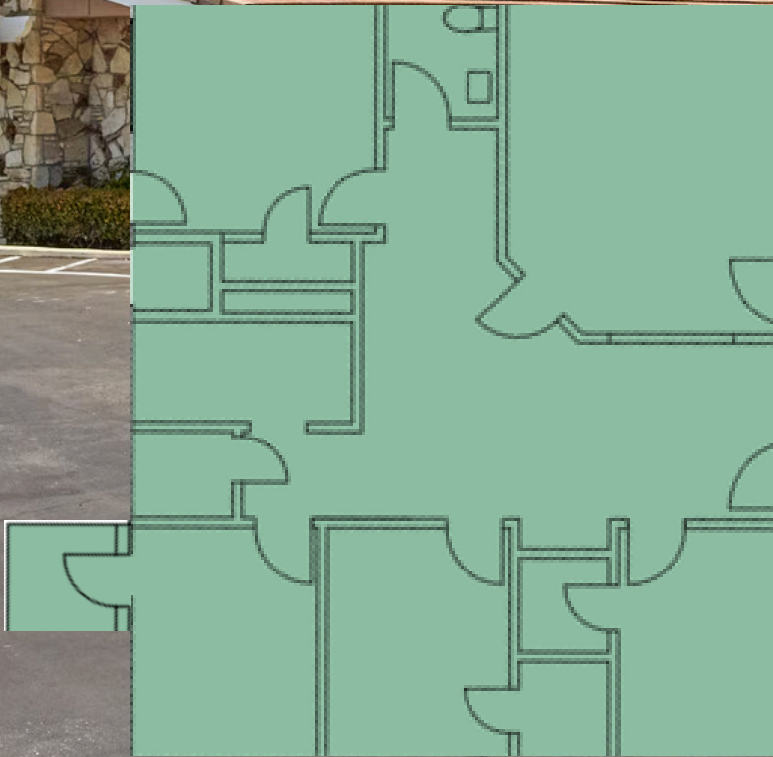


1480

S. HARBOR BLVD

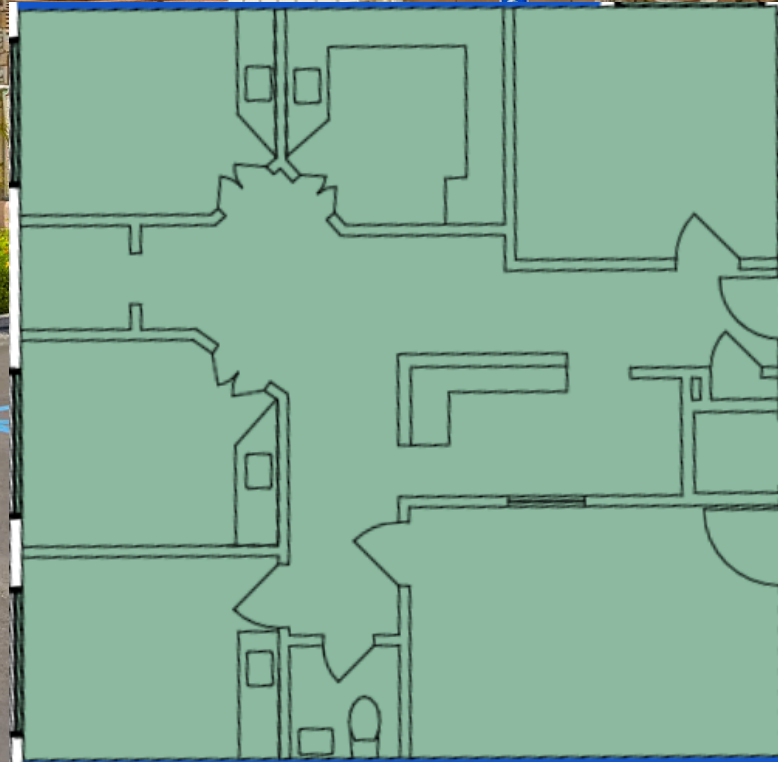
Suite 10

(1,066 SF) Medical Office



Suite 3

(918 SF) Dental Office



John Bucher
Partner

T 949.468.2246
C 949.463.5672

Paulina Salazar
Senior Associate

T 714.244.7310
C 714.244.7310

