



2081 A Division Street
Palmyra, NY 14522



FOR LEASE

INDUSTRIAL SPACE | 16,650± SF ON 8.2 ACRES

EXCLUSIVE CONTACT

Elijah Grant

Real Estate Salesperson

+1 585 248 9426 ext. 326

egrant@pyramidbrokerage.com

370 Woodcliff Drive, Suite 210

Fairport, New York 14450

+1 585 248 9426

pyramidbrokerage.com

Independently Owned and Operated / A Member of the Cushman & Wakefield Alliance
Cushman & Wakefield Copyright 2025. No warranty or representation, express or implied, is made to the accuracy or completeness of the information contained herein, and same is submitted subject to errors, omissions, change of price, rental or other conditions, withdrawal without notice, and to any special listing conditions imposed by the property owner(s). As applicable, we make no representation as to the condition of the property (or properties) in question.

FOR LEASE

16,650 ± SF INDUSTRIAL SPACE

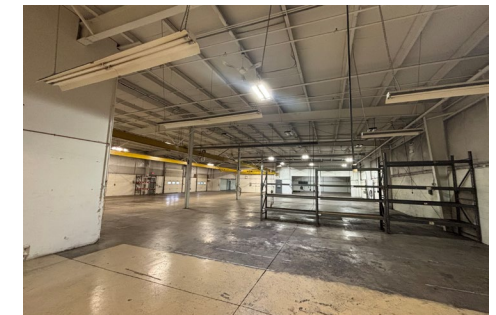
Property Highlights

- 16,650 SF light industrial building
- Fully heated and cooled throughout
- (2) grade-level overhead doors + (1) dock door
- 16–18 FT clear ceiling height
- Includes 2-ton overhead crane
- Office and breakroom areas with (2) restrooms
- Ample power and utility connections (water, sewer, drains)
- Metal construction, fully sprinkled with open layout
- Situated in a small, well-trafficked industrial park with strong frontage

Space Available

For Lease Building A 16,650 ± SF

Demographic	1 Mile	3 Miles	5 Miles
Population	929	7,324	18,047
Households	405	3,213	7,563
Average H.H. Income	\$108,078	\$98,811	\$97,203
Source:	ESRI		



EXCLUSIVE CONTACT

Elijah Grant

Real Estate Salesperson

+1 585 248 9426 ext. 326

egrant@pyramidbrokerage.com

370 Woodcliff Drive, Suite 210

Fairport, New York 14450

+1 585 248 9426

pyramidbrokerage.com

