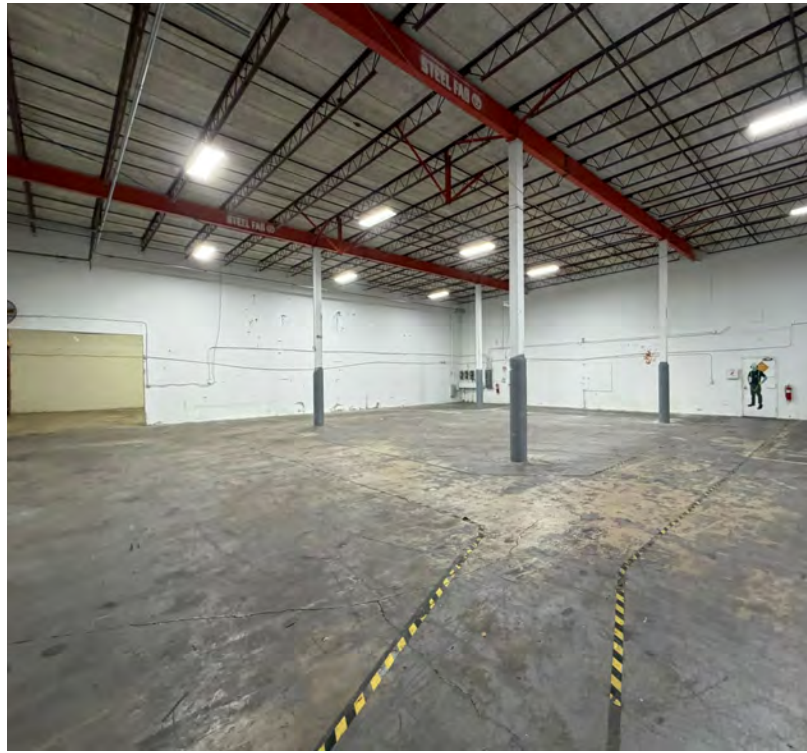


GATEWAY PARK

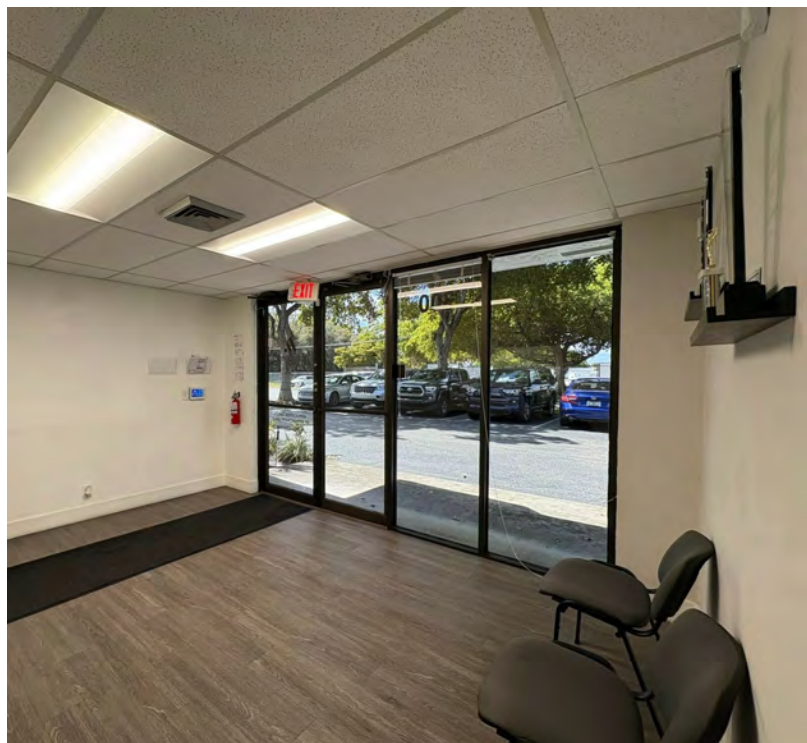
6500 NW 15TH AVE, FORT LAUDERDALE, FL 33309

SUITE 300-400



SPACE HIGHLIGHTS

- 13,204 SF
- 6,199 SF air-conditioned offices
- Impact glass
- 7,005 SF warehouse
- 19' clear ceiling in warehouse
- Ceiling mounted crane
- 10' x 10' grade level overhead door
- Two 10' x 10' dock high doors
- Conference, kitchenette, storage and production areas
- Can be separated out into a 10,050 SF suite and a 3,154 SF suite



HALEY PRESSER

Property Manager / Sales Associate
Direct: 954.485.9200 | Cell: 954.254.5396
Haley@levyrai.com

ANGIE WEAVER

Lauderdale Lakes and Lauderdale Manager
Direct: 954.485.9200 | Cell: 917.645.2339
angie@levyrai.com

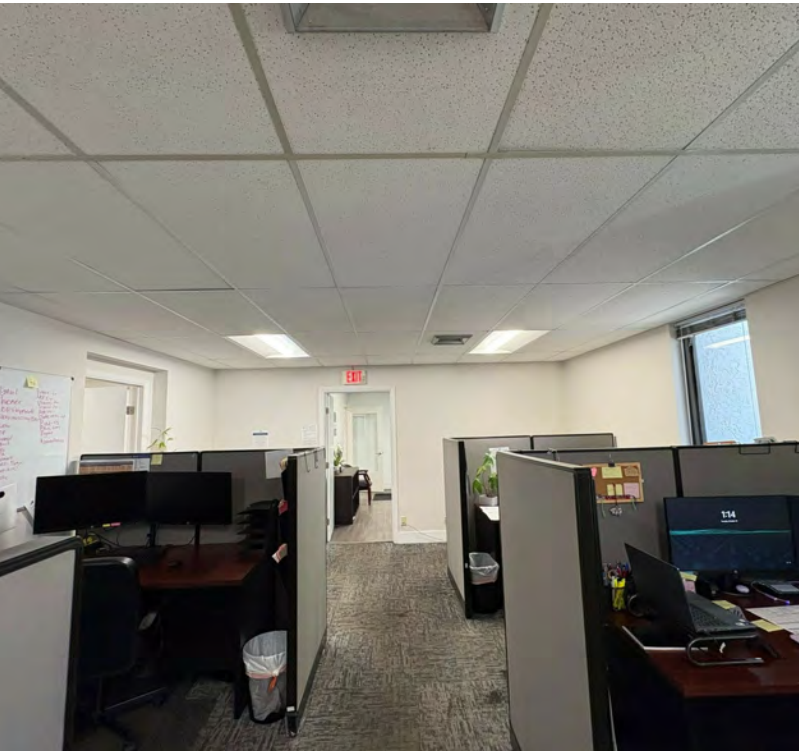


FOR LEASE

GATEWAY PARK

6500 NW 15TH AVE, FORT LAUDERDALE, FL 33309

ADDITIONAL PHOTOS



HALEY PRESSER

Property Manager / Sales Associate
Direct: 954.485.9200 | Cell: 954.254.5396
Haley@levyrai.com

ANGIE WEAVER

Lauderdale Lakes and Lauderdale Manager
Direct: 954.485.9200 | Cell: 917.645.2339
angie@levyrai.com



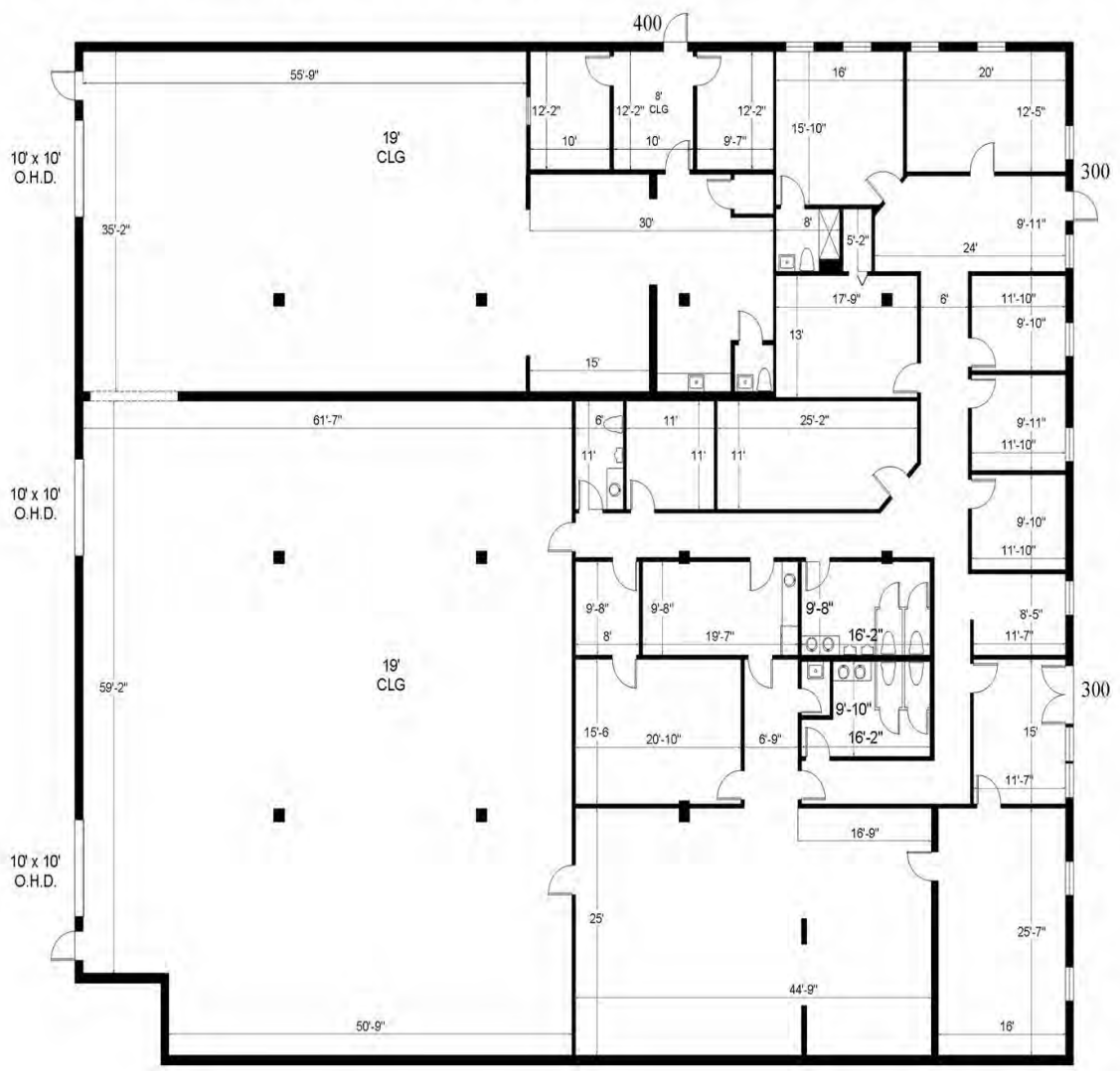
GATEWAY PARK

6500 NW 15TH AVE, FORT LAUDERDALE, FL 33309

FLOOR PLAN

GATEWAY COMMERCE PARK

6500 NW 15TH AVENUE | SUITE 300-400 | FT LAUDERDALE, FL 33309



Office 6,199 Sq. Ft.
Warehouse 7,005 Sq. Ft.

13,204 Rentable Sq. Ft.
www.LevyRealtyAdvisors.com

HALEY PRESSER
Property Manager / Sales Associate
Direct: 954.485.9200 | Cell: 954.254.5396
Haley@levyrai.com

ANGIE WEAVER
Lauderdale Lakes and Lauderdale Manager
Direct: 954.485.9200 | Cell: 917.645.2339
angie@levyrai.com

