

HARBOUR AUTO MALL

6480-6520 W COMMERCIAL BLVD, LAUDERHILL, FL 33319

6520 W COMMERCIAL BLVD



SPACE HIGHLIGHTS

- 3,943 SF
- 829 SF air-conditioned lobby and 2 private rooms
- Ideal for all types of automotive or mechanical use
- Direct frontage and visibility on West Commercial Blvd - excellent exposure to daily traffic
- Dedicated right hand turn into the property
- Building and pylon signage available
- Cross ventilation with 7 grade level overhead doors on both East and West end of the unit measuring 10' x 12' with one measuring 10' x 10'
- C-3 Zoning



HALEY PRESSER

Property Manager / Sales Associate
Direct: 954.485.9200 | Cell: 954.254.5396
Haley@levyrai.com

ANGIE WEAVER

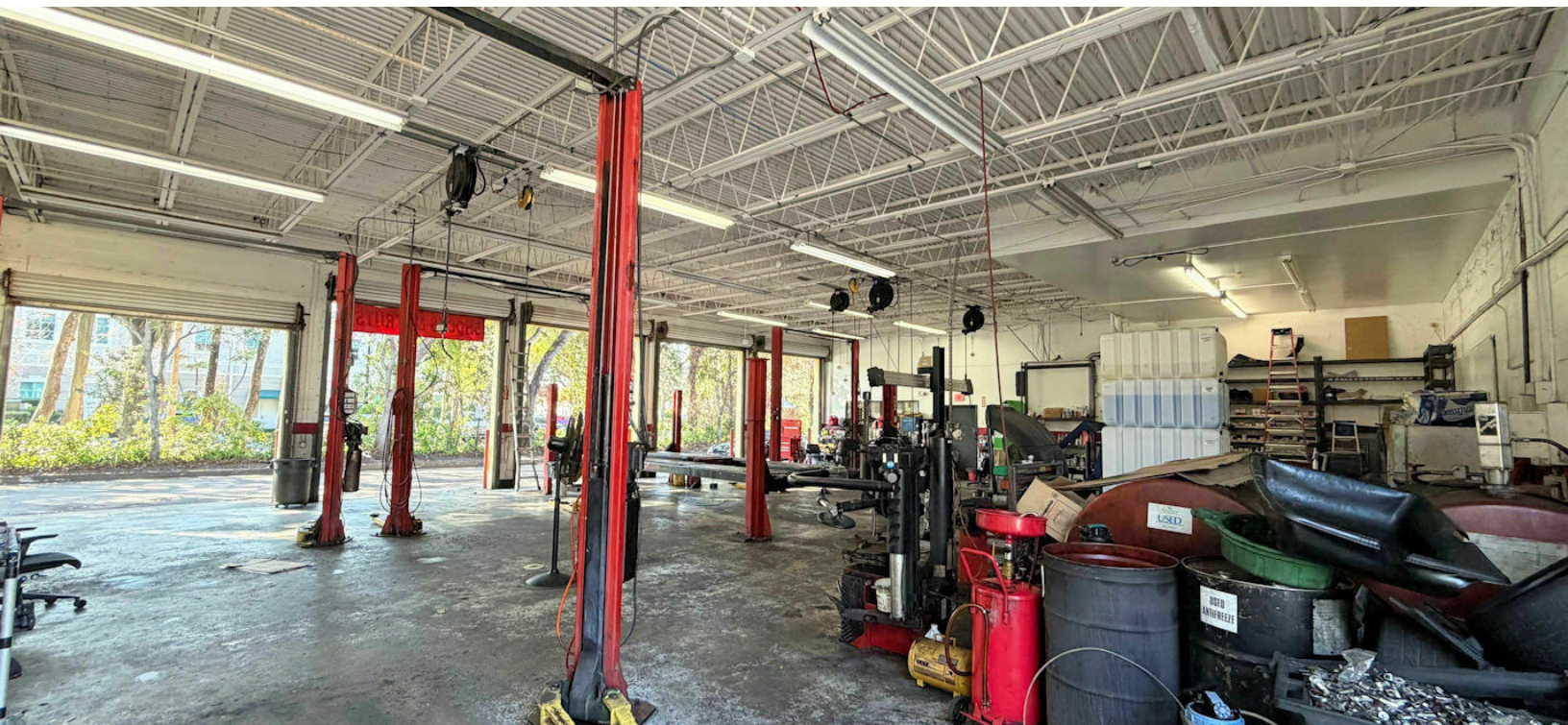
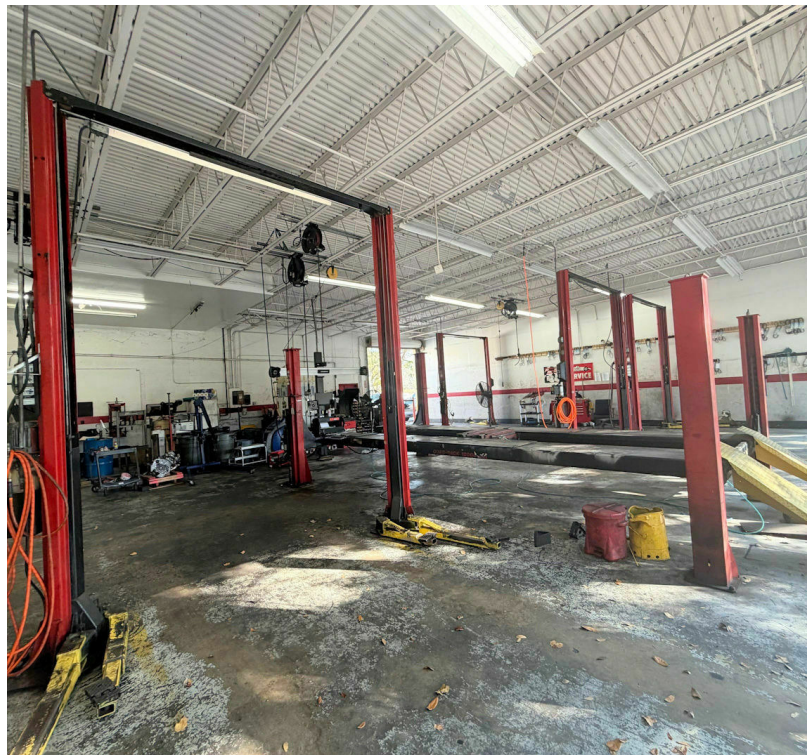
Lauderdale Lakes and Lauderhill Manager
Direct: 954.485.9200 | Cell: 917.645.2339
angie@levyrai.com



HARBOUR AUTO MALL

6480-6520 W COMMERCIAL BLVD, LAUDERHILL, FL 33319

CUSTOM PAGE



HALEY PRESSER

Property Manager / Sales Associate
Direct: 954.485.9200 | Cell: 954.254.5396
Haley@levyrai.com

ANGIE WEAVER

Lauderdale Lakes and Lauderdale Manager
Direct: 954.485.9200 | Cell: 917.645.2339
angie@levyrai.com



HARBOUR AUTO MALL

6480-6520 W COMMERCIAL BLVD, LAUDERHILL, FL 33319

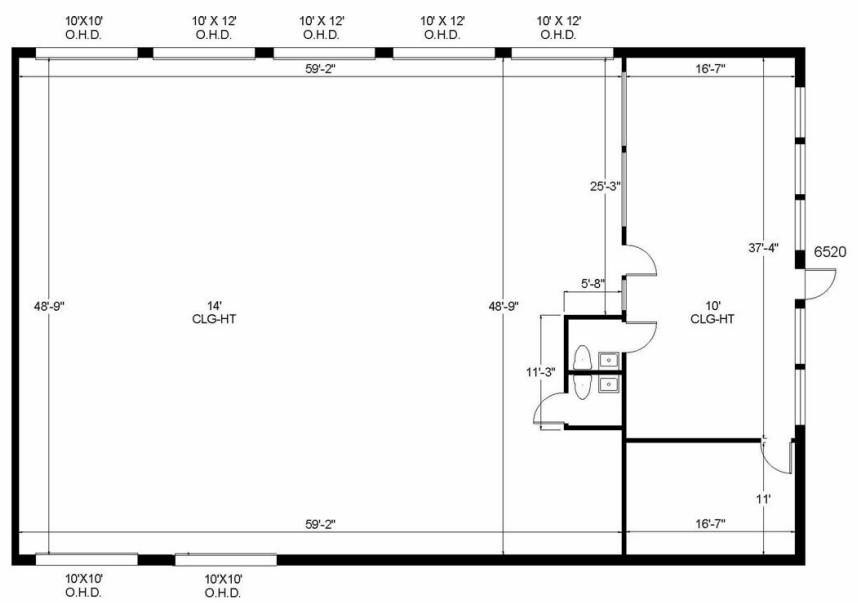
6520 W COMMERCIAL BLVD FLOOR PLAN

HARBOUR AUTO MALL

6520 W Commercial Blvd | Lauderhill, FL 33319



OFFICE: 829 SF
WAREHOUSE: 3,501 SF



3,943 Rentable Sq. Ft.
www.LevyRealtyAdvisors.com

HALEY PRESSER
 Property Manager / Sales Associate
 Direct: 954.485.9200 | Cell: 954.254.5396
Haley@levyrai.com

ANGIE WEAVER
 Lauderdale Lakes and Lauderhill Manager
 Direct: 954.485.9200 | Cell: 917.645.2339
angie@levyrai.com

