



Colliers

1 Eglinton Avenue East, Toronto

Freshly Transformed. Exceptionally Located.

Experience the Reimagined 1 Eglinton Avenue
East in the Heart of Midtown Toronto

Tom Muha*

Senior Vice President
+1 416 643 3412
tom.muha@colliers.com

Tobin Davis*

Vice Chairman
+1 416 643 3744
first.lastname@colliers.com

Charu Mahant

Sales Representative
+1 416 620 2338
charu.mahant@colliers.com

Property Overview



Legal Address

1 Eglinton Avenue East, Toronto



Location

The Property is conveniently located at the corner of Yonge and Eglinton, in the heart of Midtown Toronto.

Key Highlights



Major building upgrades recently completed



Prime location



Direct TTC Subway access



Underground parking available



Close to numerous restaurants



24-Hour security available



Nearby many amenities



Bike Score

72



Walk Score

99



Transit Score

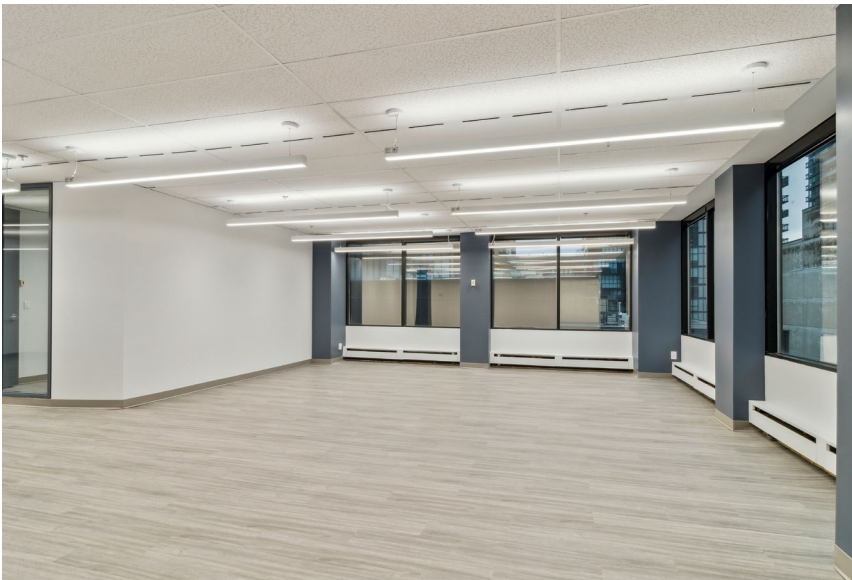
91



Newly Renovated Lobby



Model Suite



Model Suite



Street Access



Corner of Yonge & Eglinton



Concourse Level

Property Availabilities

Suite	Type	Size	Available	Floor Plan
201	Office	10,110 SF	Immediately	View Floor Plan
208	Office	2,669 SF	Immediately	View Floor Plan
Third Floor (Entire Floor)	Office	17,946 SF	July 1, 2025	View Floor Plan
400	Office	2,837 SF	Immediately	View Floor Plan
407	Office	1,897 SF	Immediately	View Floor Plan
416	Office	7,357 SF	Immediately	View Floor Plan
500	Office	8,318 SF	Immediately	View Floor Plan
502	Office	2,343 SF	Immediately	View Floor Plan
600	Office	4,775 SF	Immediately	View Floor Plan
601 (Model Suite)	Office	3,286 SF	Immediately	View Floor Plan
602	Office	2,171 SF	June 1, 2025	View Floor Plan
705	Office	5,389 SF	June 1, 2025	View Floor Plan



Net Rent : \$18.00 PSF

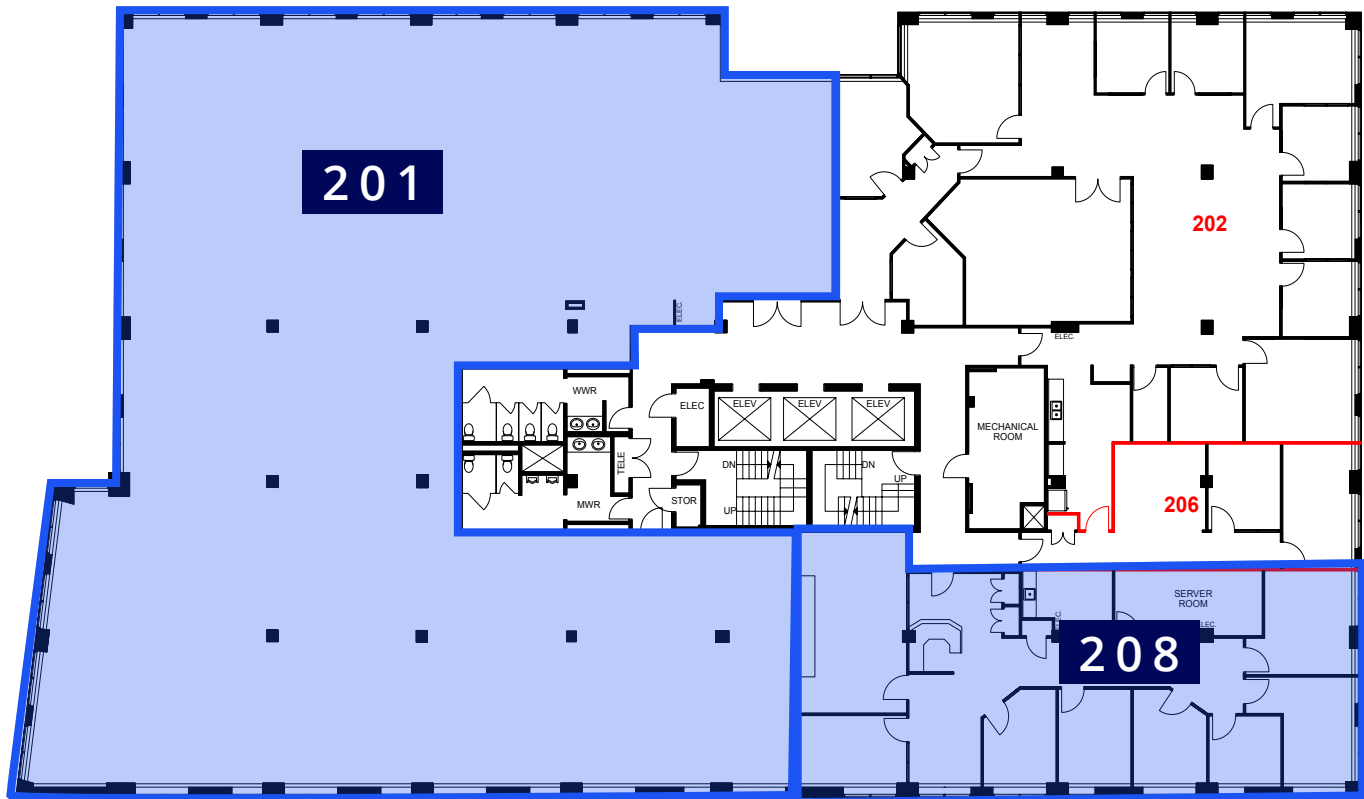


Additional Rent : \$23.05 PSF (2025)

Floor Plans

Suite 201 10,110 SF

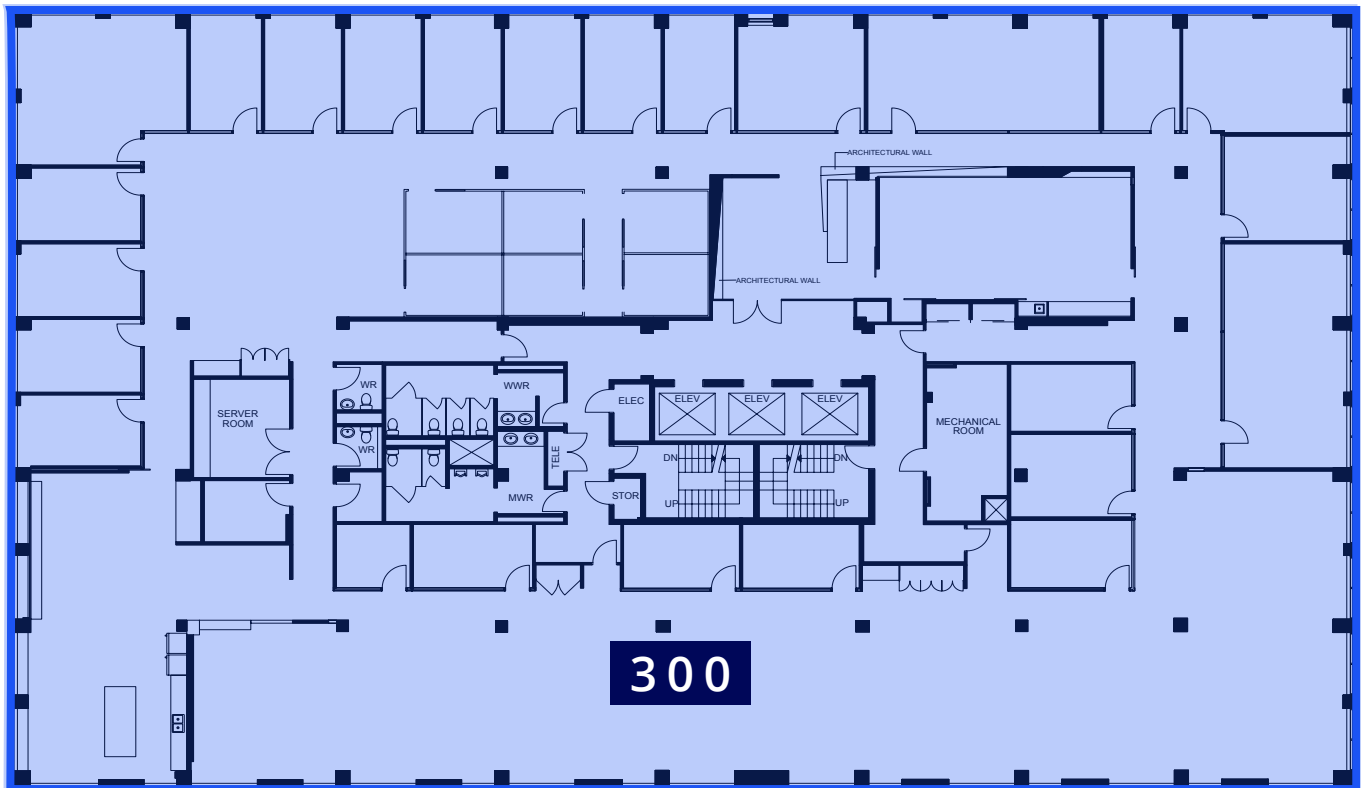
Suite 208 2,669 SF



Floor Plans

Entire Third Floor

17,946 SF

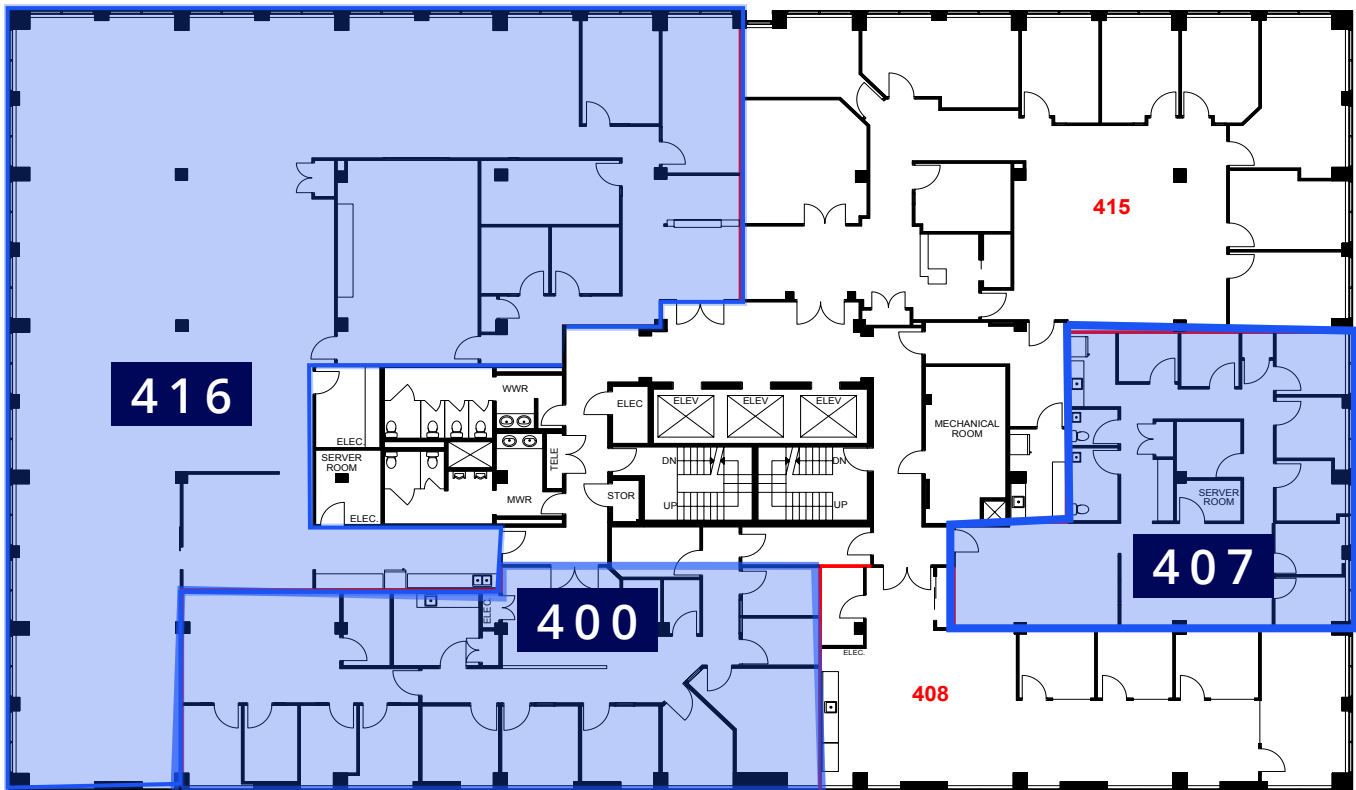


Floor Plans

Suite 400 2,837 SF

Suite 407 1,897 SF

Suite 416 7,357 SF



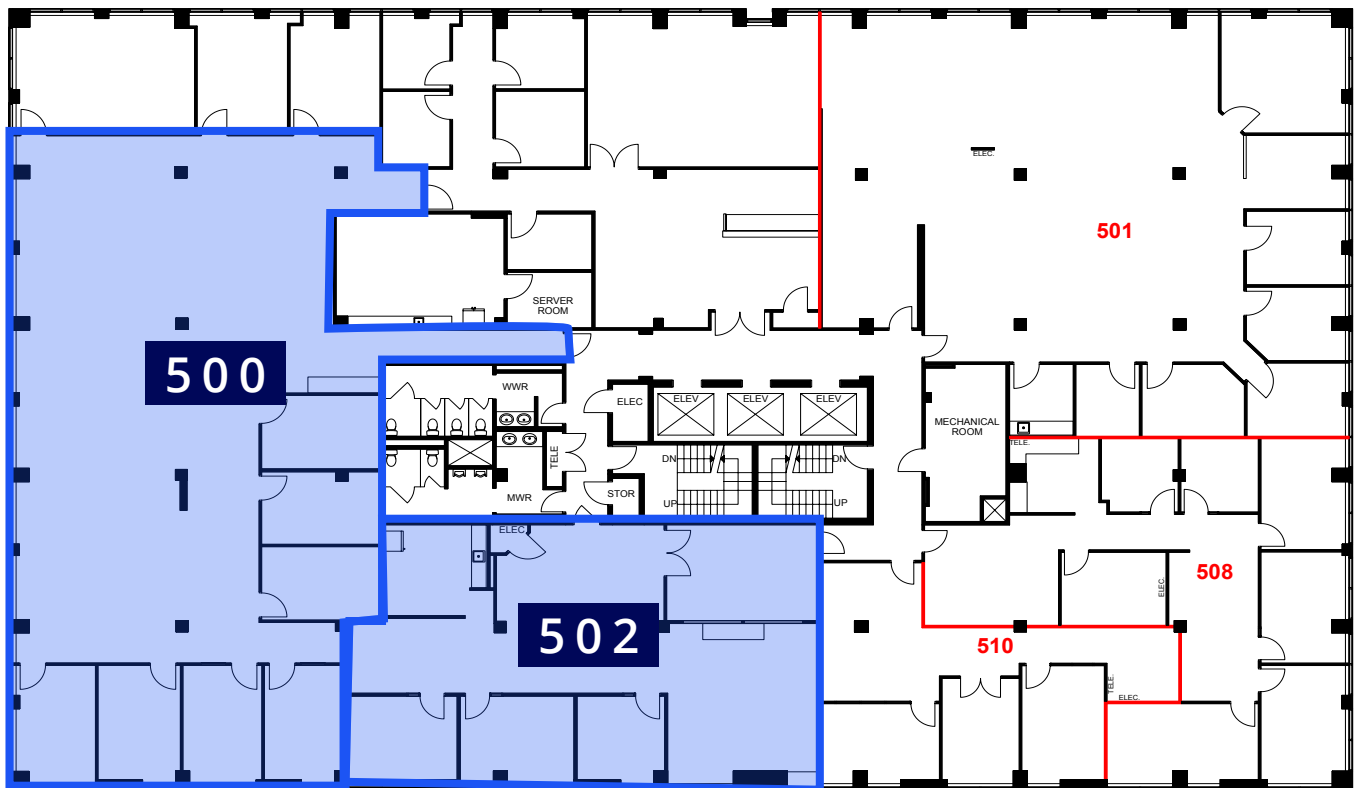
Suite 416 Photos



Floor Plans

Suite 500 8,318 SF

Suite 502 2,343 SF



Suite 500 Photos



Suite 502 Photos

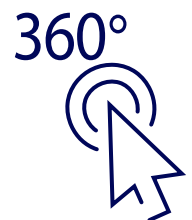
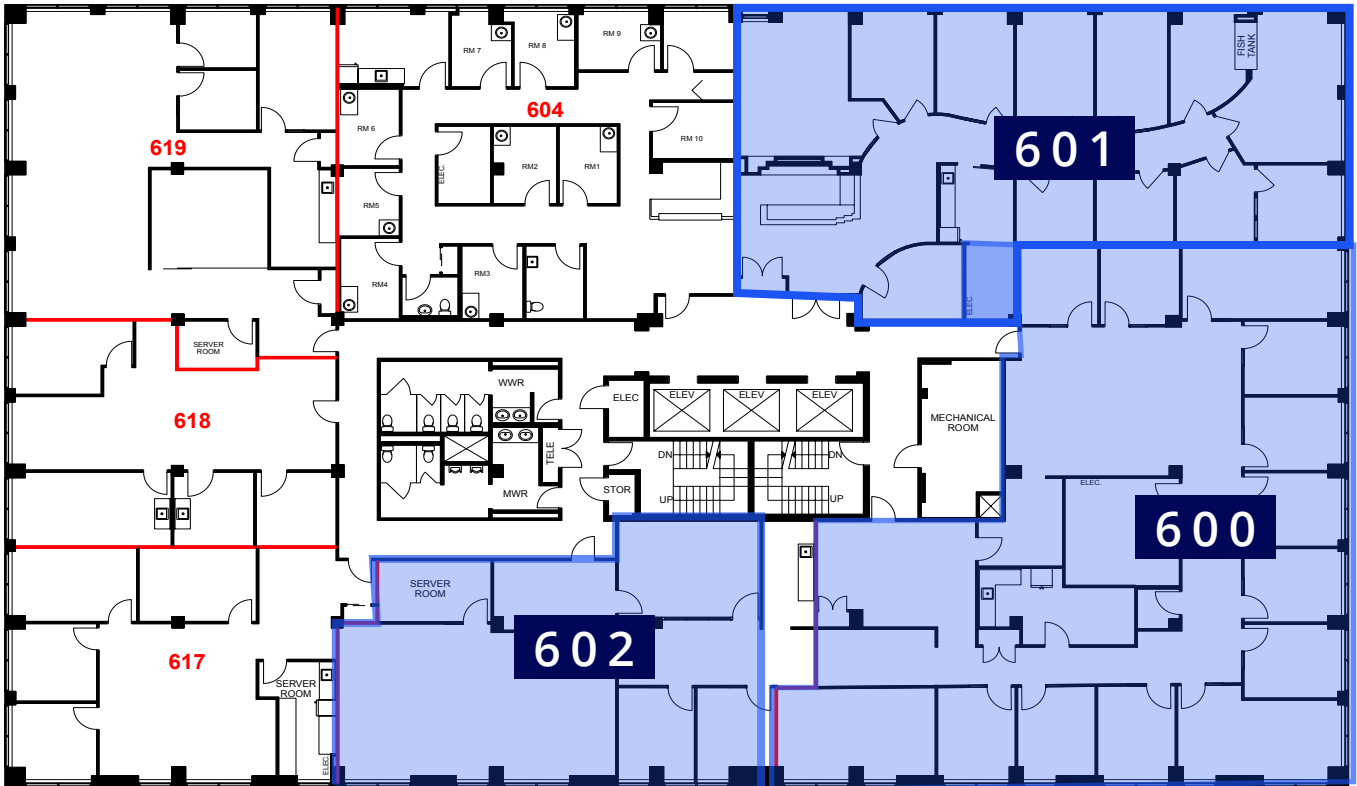


Floor Plans

Suite 600 4,775 SF

Suite 601 3,286 SF - Model Suite

Suite 602 2,171 SF

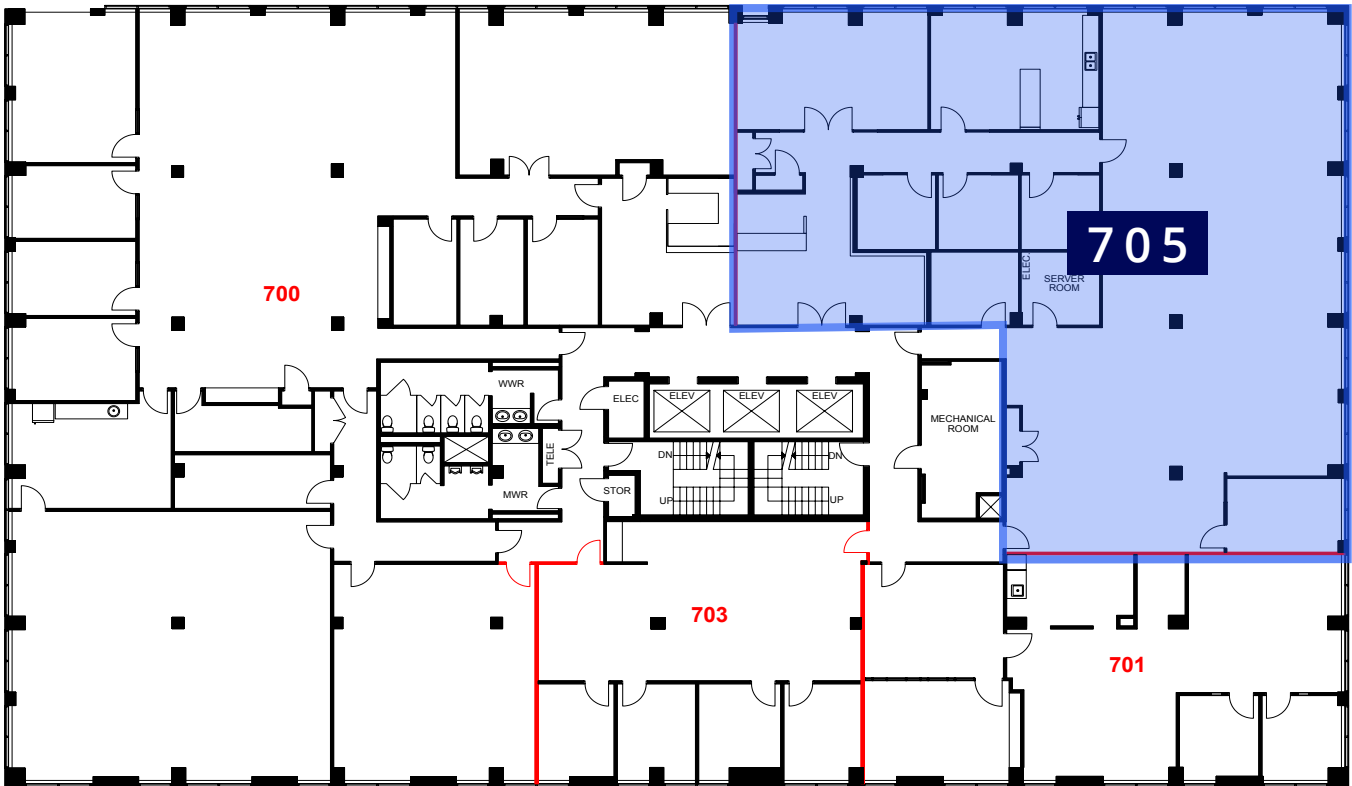


Model Suite - Suite 601



Floor Plans

Suite 705 5,389 SF

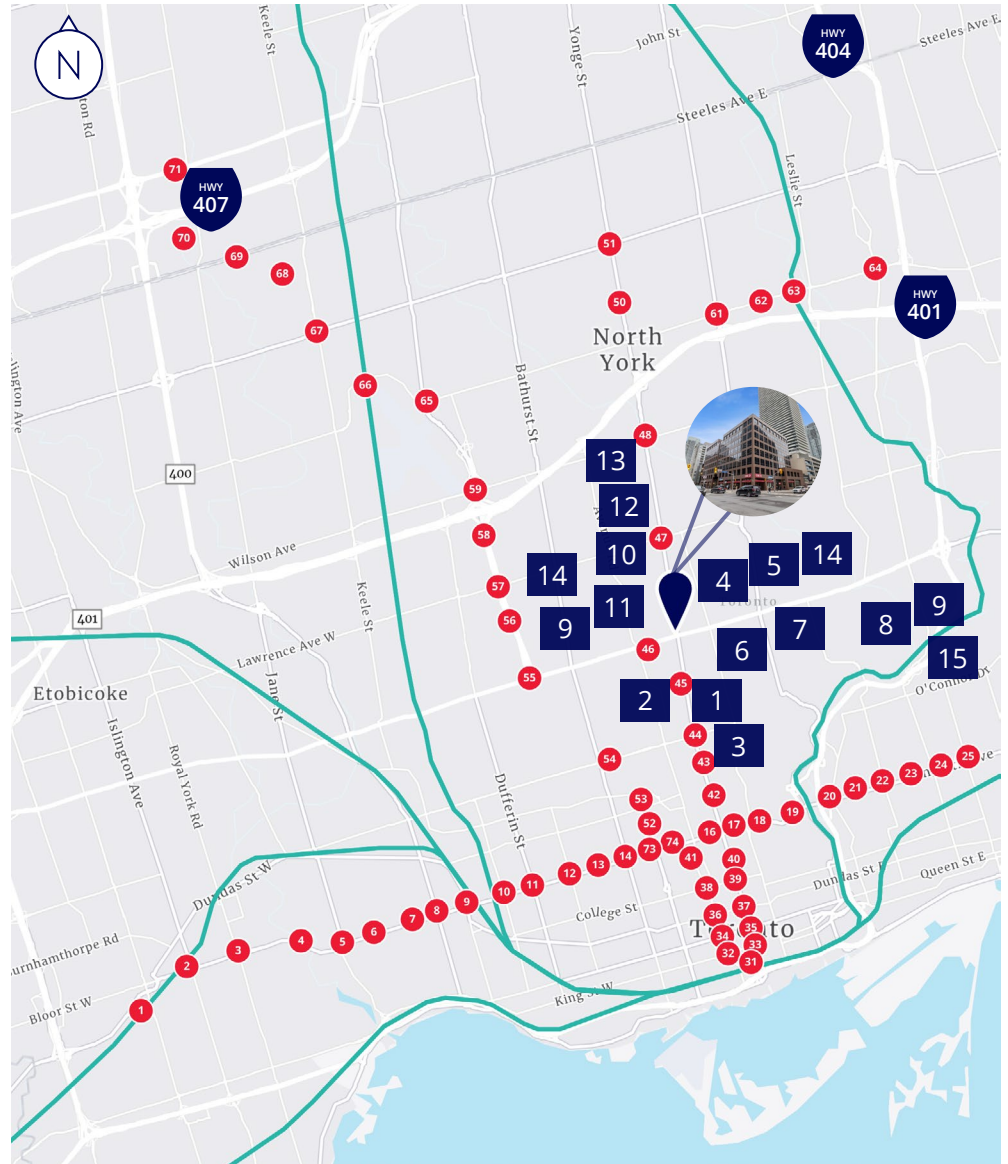


Surrounding Amenities

📍 1 Eglinton Ave E

- 1 The Keg
- 2 Mandarin
- 3 Farm Boy
- 4 Mc Donald's
- 5 Gaia Natural Foods
- 6 7 - Eleven
- 7 The Fox Firkin Pub
- 8 Loblaws
- 9 LCBO
- 10 KFC
- 11 Cineplex
- 12 Indigo
- 13 Scotiabank
- 14 Goodlife Fitness
- 15 Orangetheory Fitness

- 1 TTC Subway Line
- 2 GO Transit Line





1 Eglinton Avenue East, Toronto

Charu Mahant

Sales Representative
+1 416 620 2338
charu.mahant@colliers.com

Tom Muha*

Senior Vice President
+1 416 643 3412
tom.muha@colliers.com

Tobin Davis*

Vice Chairman
+1 416 643 3744
first.lastname@colliers.com

This document has been prepared by Colliers for advertising and general information only. Colliers makes no guarantees, representations or warranties of any kind, expressed or implied, regarding the information including, but not limited to, warranties of content, accuracy and reliability. Any interested party should undertake their own inquiries as to the accuracy of the information. Colliers excludes unequivocally all inferred or implied terms, conditions and warranties arising out of this document and excludes all liability for loss and damages arising there from. This publication is the copyrighted property of Colliers and/or its licensor(s). Copyright © 2025. All rights reserved. This communication is not intended to cause or induce breach of an existing listing agreement. Colliers Macaulay Nicolls Inc., Brokerage

*Sales Representative