



# 2311 East 7th Street

Long Beach, California 90804

## Lease Highlights

- Street Retail

## Property Description

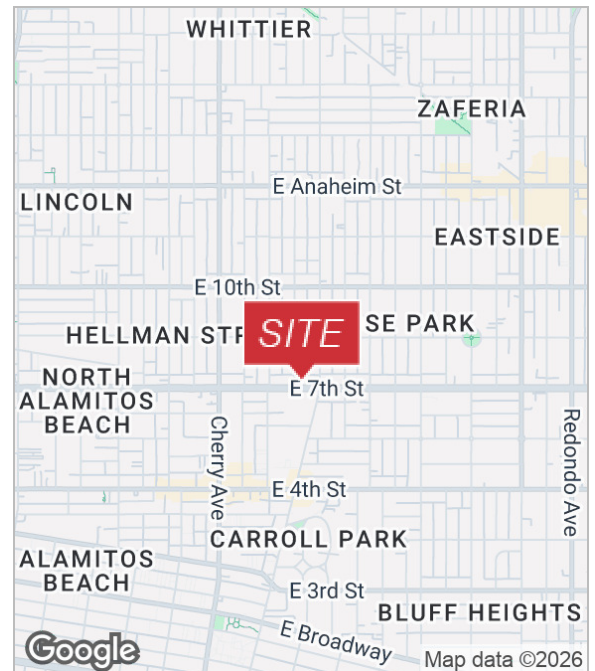
650 Sf of street retail.

## Demographics

	1 Mile	3 Miles	5 Miles
Total Households	31,896	101,249	160,027
Total Population	78,090	249,364	408,589
Average HH Income	\$83,315	\$97,150	\$112,706

## Available Spaces

Spaces	Lease Rate	Size (SF)
2311 E 7Th St	\$1.90 SF/Month/MG	650 SF



For more information

**Tina LaMonica, SIOR, Executive Vice President**  
O: 626.204.1523 | C: 626.644.7632  
tlamonica@naicapital.com | CalDRE #01841057

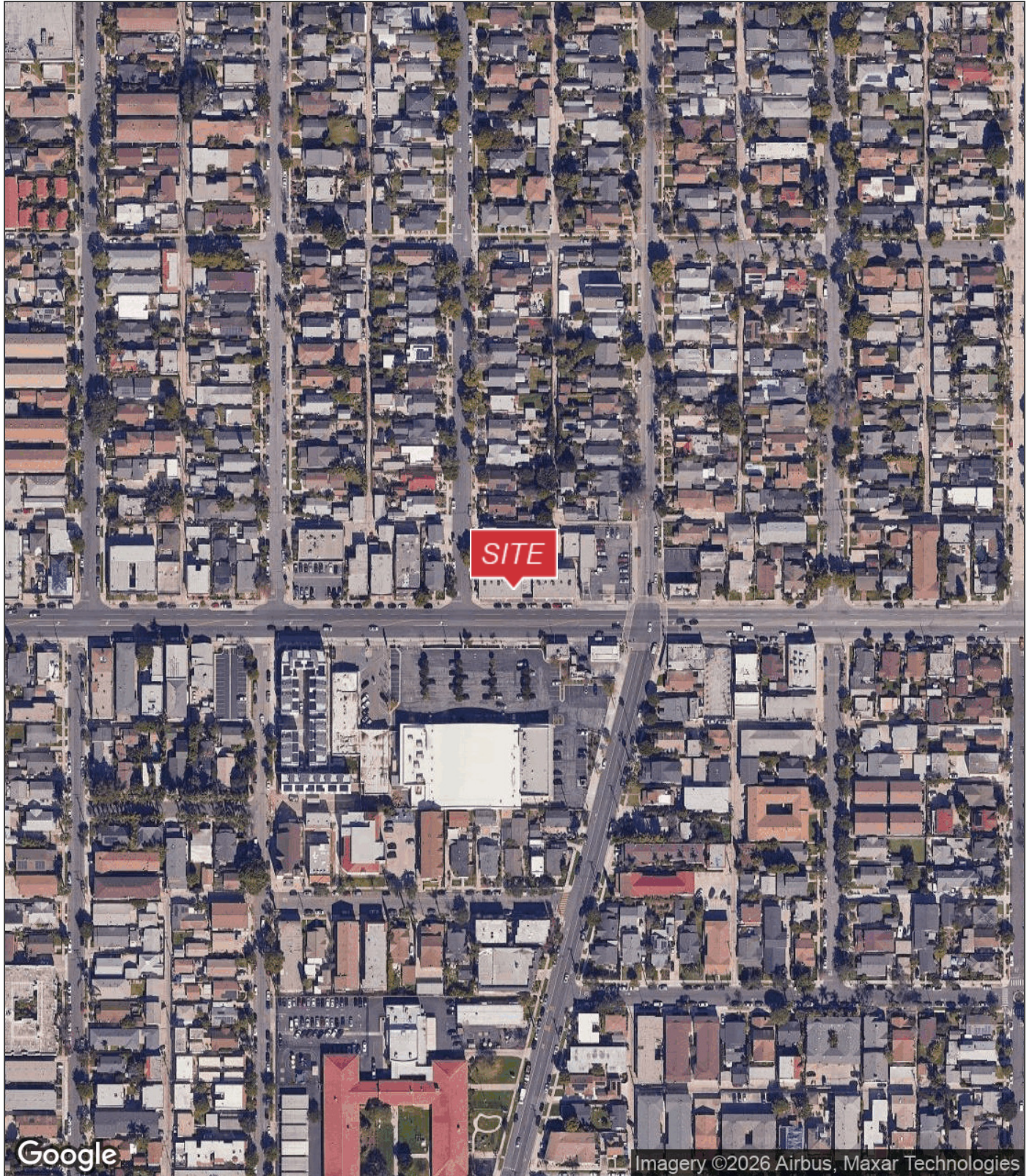
**Jaxon Ziegenfuss, Associate**

O: 626.204.1530 | C: 818.720.4478  
jzienfuss@naicapital.com | CalDRE #02242493

No warranty, express or implied, is made as to the accuracy of the information contained herein. This information is submitted subject to errors, omissions, change of price, rental or other conditions, withdrawal without notice, and is subject to any special listing conditions imposed by our principals. Cooperating brokers, buyers, tenants and other parties who receive this document should not rely on it, but should use it as a starting point of analysis, and should independently confirm the accuracy of the information contained herein through a due diligence review of the books, records, files and documents that constitute reliable sources of the information described herein. Logos are for identification purposes only and may be trademarks of their respective companies. NAI Capital Commercial, Inc. CAL DRE Lic. #02130474

For Lease

# 2311 East 7th Street



Google

Imagery ©2026 Airbus, Maxar Technologies

**Tina LaMonica, SIOR**

Executive Vice President  
626.204.1523  
C: 626.644.7632  
tlamonica@naicapital.com  
CalDRE #01841057

**Jaxon Ziegenfuss**

Associate  
626.204.1530  
C: 818.720.4478  
jziegenfuss@naicapital.com  
CalDRE #02242493

