

EXTREMELY RARE CORNER RESTAURANT SPACE ON VENTURA BLVD IN STUDIO CITY



10628 VENTURA BLVD
LOS ANGELES, CA 91604



COMMERCIAL
ASSET GROUP

These materials are based on information and content provided by others, which we believe are accurate. No guarantee, warranty or representation is made by Commercial Asset Group, Inc. or its personnel. All interested parties must independently verify accuracy and completeness. As well, any projections, assumptions, opinion, or estimates are used for example only and do not represent the current or future performance of the identified property. Your tax, financial, legal and toxic substance advisors should conduct a careful investigation of the property and its suitability for your needs, including land use limitations. The property is subject to prior lease, sale, change in price, or withdrawal from the market without notice.

LEASE RATE

\$14,650/MO + NNN

SPACE SIZE

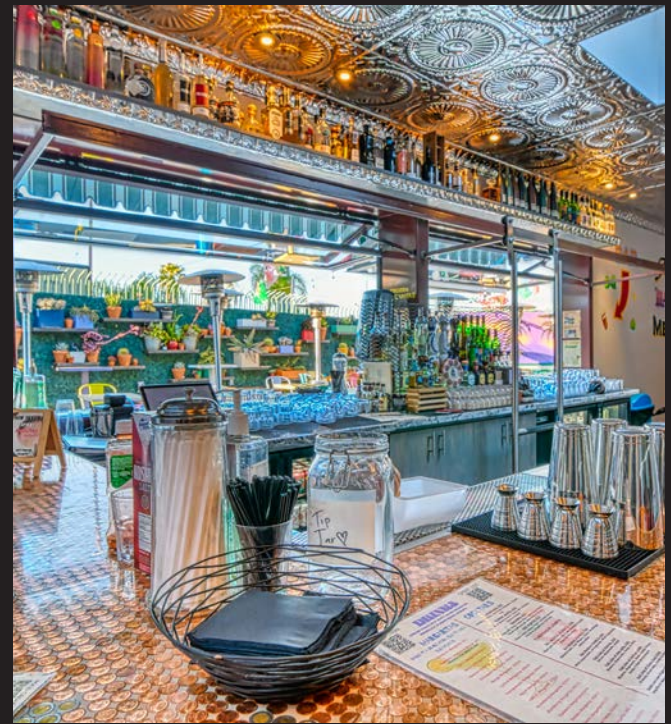
±4,355 RSF

(±1,855 SF INDOOR + ±2,500 SF PATIO)

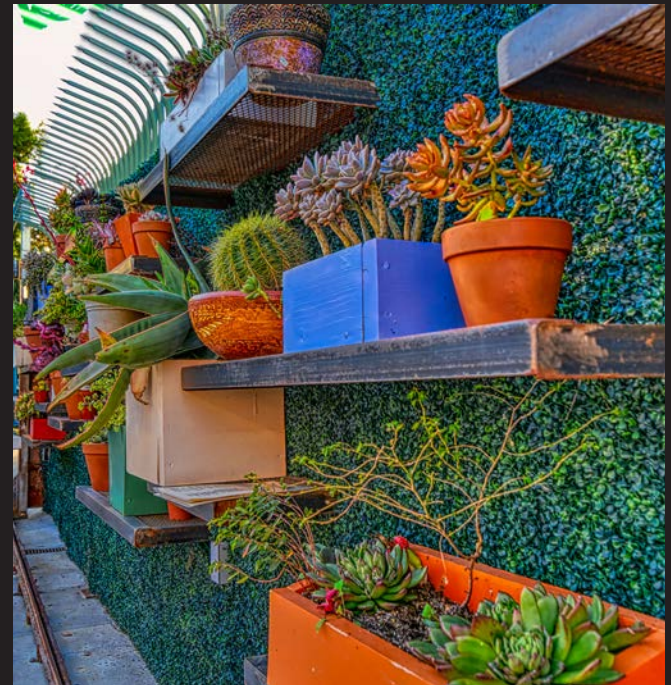
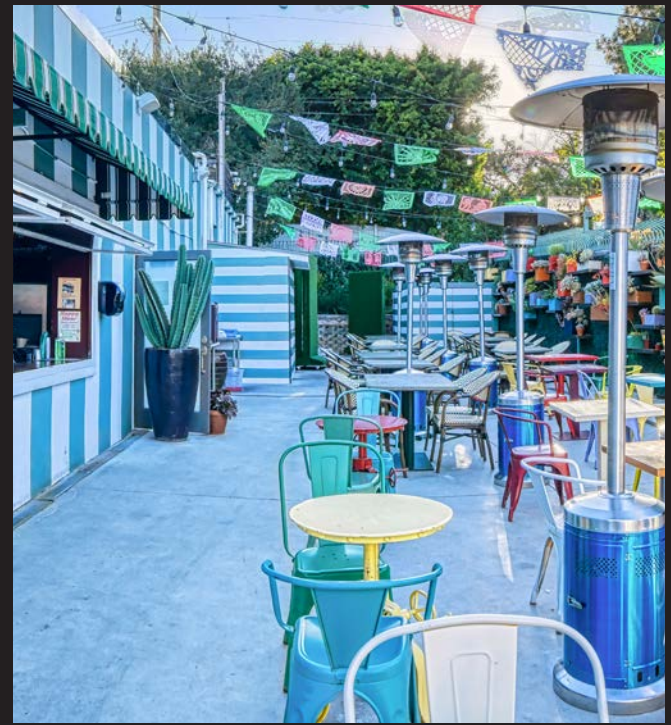
AVAILABLE

UPON REQUEST

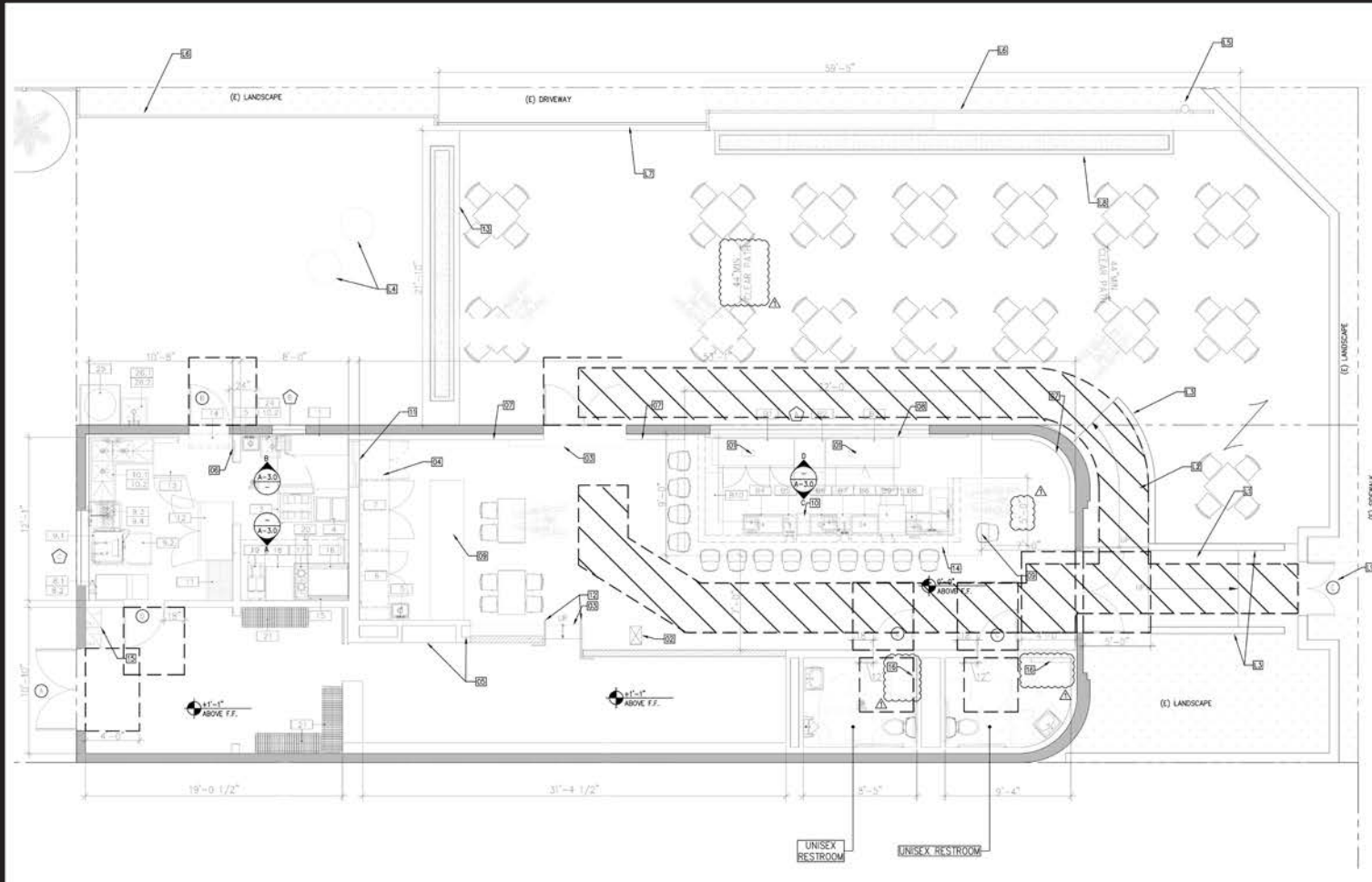
- No key money - Type 47 liquor license for sale
- Over 4,350 SQ FT of usable space inclusive of the expansive outdoor seating area
- Completely remodeled in 2021
- Extremely visible corner property at the border of Studio City, Universal City and NoHo



INTERIOR PHOTOS



EXTERIOR PHOTOS



FLOOR PLAN



DEMOGRAPHICS

TOTAL POPULATION

1 MILE: 18,053

2 MILE: 192,228

3 MILE: 633,542

AVERAGE HOUSEHOLD INCOME

1 MILE: \$126,897

2 MILE: \$117,187

3 MILE: \$108,866

MEDIAN AGE

1 MILE: 39.6

2 MILE: 39.8

3 MILE: 39.8

WALK SCORE

92



COMMERCIAL
ASSET GROUP



DAVID ASCHKENASY
EXECUTIVE VICE PRESIDENT
P 310.272.7381
E DAVIDA@CAGRE.COM
LIC. 01714442

DAVID ICKOVICS
PRINCIPAL
P 310.272.7380
E DJI@CAGRE.COM
LIC. 01315424

COMMERCIAL ASSET GROUP
1801 CENTURY PARK EAST, STE 1550
LOS ANGELES, CA 90067
P 310.275.8222 F 310.275.8223
WWW.CAGRE.COM LIC. 01876070