

For Lease

707 Doak Blvd • Ripon • CA • 95366



The information contained herein is deemed reliable, but is not guaranteed. For commercial real estate opportunities and inquiries, please contact:

**HIGH
PRICE &
LEFFLER**
ASSOCIATES

PMZ COMMERCIAL
SINCE 1957 REAL ESTATE

Randy High Jr., CCIM

DRE Lic. No. 01238404

(209) 491-3413

randyhighjr@gmail.com

Danny Price

DRE Lic. No. 01895497

(209) 491-3415

dprice@highpriceleffler.com

Desiree Holland

Administrative & Marketing Assistant

(209) 672-6792

PMZDes@gmail.com

Property Summary

Address:	707 Doak Blvd. • Ripon	County:	San Joaquin County
Lease Price for Suite(s):	\$1,000 per month	Property Type:	Industrial - M1
Available Suite SF:	± 120 SF	Property Sub-Type:	Commercial Office
Yard Space Available:	± 6,100 SF	Parcel Number:	259-670-60, 259-670-61
Lot Size:	± 209,088 SF • ± 4.8 AC	Procuring Broker Fee:	2.5%

Property Description:

Located in the heart of Ripon's established industrial corridor, 707 Doak Boulevard offers a prime opportunity for businesses seeking executive office space. This well-maintained property features ample parking, and convenient access to Highway 99. The building is equipped to accommodate a variety of uses with flexible floor plans, high ceilings, shared kitchen and restrooms. Positioned within a professional business park environment, 707 Doak Blvd is ideal for companies looking to expand or establish their operations in the Central Valley.

Features:

Executive Suites

- 10' Finished Height
- Office Doors with Windows
- Full Utilities including HVAC and Fiber Internet
- Shared Mens and Womens Restrooms
- Large Shared Kitchen

Yard Storage Space

- ± 6,100 SF
- Open Storage for Noncombustible Items
- Secured

The information contained herein is deemed reliable, but is not guaranteed. For commercial real estate opportunities and inquiries, please contact:

**HIGH
PRICE &
LEFFLER**
ASSOCIATES

PMZ COMMERCIAL
SINCE 1957 REAL ESTATE

Randy High Jr., CCIM

DRE Lic. No. 01238404
(209) 491-3413
randyhighjr@gmail.com

Danny Price

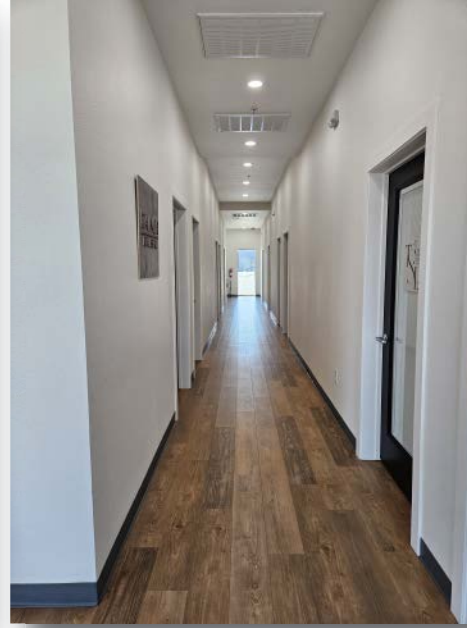
DRE Lic. No. 01895497
(209) 491-3415
dprice@highpriceleffler.com

Desiree Holland

Administrative & Marketing Assistant
(209) 672-6792
PMZDes@gmail.com

Photo Gallery

Executive Suites



The information contained herein is deemed reliable, but is not guaranteed. For commercial real estate opportunities and inquiries, please contact:

**HIGH
PRICE &
LEFFLER**
ASSOCIATES

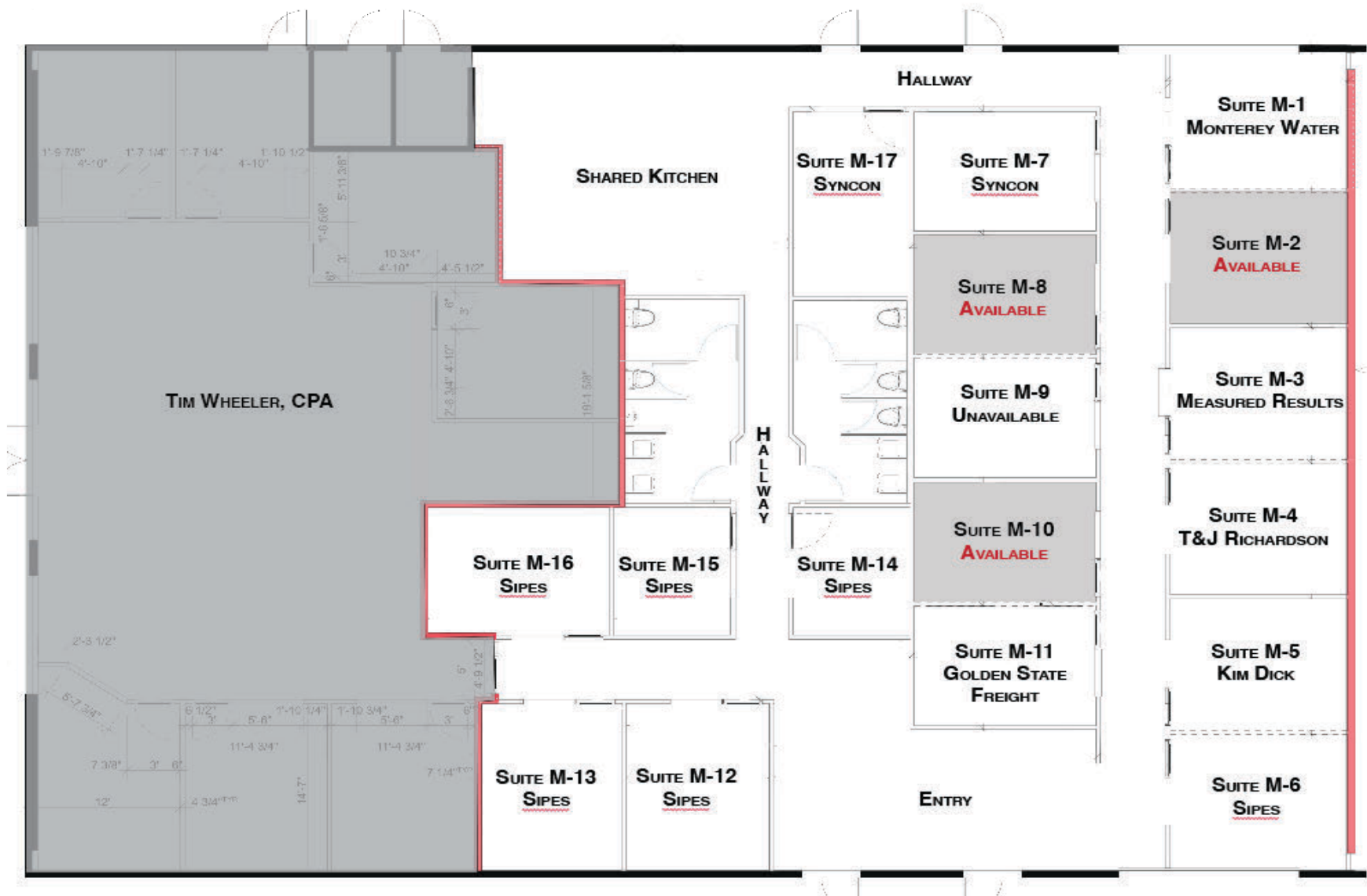
PMZ COMMERCIAL
SINCE 1957 REAL ESTATE

Randy High Jr., CCIM
DRE Lic. No. 01238404
(209) 491-3413
randyhighjr@gmail.com

Danny Price
DRE Lic. No. 01895497
(209) 491-3415
dprice@highpriceleffler.com

Desiree Holland
Administrative & Marketing Assistant
(209) 672-6792
PMZDes@gmail.com

Executive Suites



The information contained herein is deemed reliable, but is not guaranteed. For commercial real estate opportunities and inquiries, please contact:

**HIGH
PRICE &
LEFFLER**
ASSOCIATES

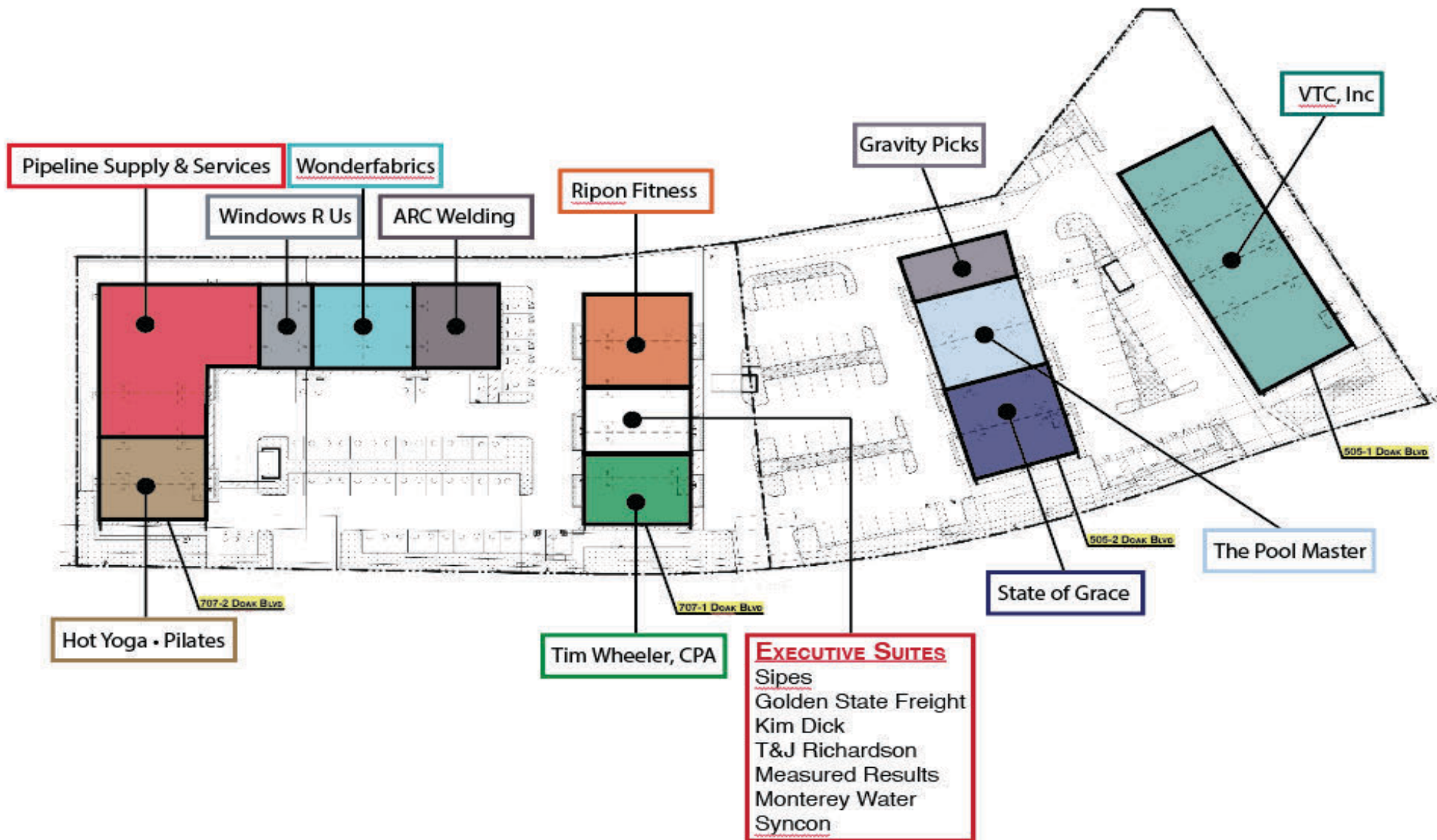
PMZ COMMERCIAL
SINCE 1957 REAL ESTATE

Randy High Jr., CCIM
DRE Lic. No. 01238404
(209) 491-3413
randyhighjr@gmail.com

Danny Price
DRE Lic. No. 01895497
(209) 491-3415
dprice@highpriceleffler.com

Desiree Holland
Administrative & Marketing Assistant
(209) 672-6792
PMZDes@gmail.com

Site Map



The information contained herein is deemed reliable, but is not guaranteed. For commercial real estate opportunities and inquiries, please contact:

**HIGH
PRICE &
LEFFLER**
ASSOCIATES

PMZ COMMERCIAL
SINCE 1957 REAL ESTATE

Randy High Jr., CCIM
DRE Lic. No. 01238404
(209) 491-3413
randyhighjr@gmail.com

Danny Price
DRE Lic. No. 01895497
(209) 491-3415
dprice@highpriceleffler.com

Desiree Holland
Administrative & Marketing Assistant
(209) 672-6792
PMZDes@gmail.com

Aerial View



The information contained herein is deemed reliable, but is not guaranteed. For commercial real estate opportunities and inquiries, please contact:

**HIGH
PRICE &
LEFFLER**
ASSOCIATES

PMZ COMMERCIAL
SINCE 1957 REAL ESTATE

Randy High Jr., CCIM
DRE Lic. No. 01238404
(209) 491-3413
randyhighjr@gmail.com

Danny Price
DRE Lic. No. 01895497
(209) 491-3415
dprice@highpriceleffler.com

Desiree Holland
Administrative & Marketing Assistant
(209) 672-6792
PMZDes@gmail.com

