

Exclusive CoWorking Opportunity for ACE Members

1 Dupont Circle

National Center for
Higher Education

Highlights

- Unparcelled access to ACE and its members
- Fully furnished Individual offices and workstations available for short term rental
- Access to fully equipped office with no investment
- Members enjoy high quality service
- Book only what and when needed
- Availability to scale up or down as needed
- Conference Rooms available for large groups up to 12.

Features

- Plug and play desk set up with new, ergonomic furniture
- Site and support team access from ACE around the clock
- High speed, secure internet access included
- Across from Dupont Circle Metro Station
- Exclusive events for members

Dwayne Carper
(202) 409-8805
NCHE450@acenet.edu



Disclaimer: The information contained herein has been obtained from sources deemed to be reliable, the American Council on Education., and/or their representative, brokers or agents make no guarantees as to the accuracy of the information contained herein and offer the Property without guarantees or warranties of any kind. The Property may be withdrawn without notice. If the recipient of this information has signed a confidentiality agreement regarding this matter, this information is subject to the terms of that agreement.

ACE® American
Council on
Education™

Dupont Circle

Historic Neighborhood

1 Dupont Circle

National Center for
Higher Education

Background

Located north of Washington DC's Centralized Business District, Dupont Circle is known as a historic location in the heart of the district. Improvements to the land during the 1870s created Dupont Circle into a fashionable neighborhood for residents and visitors alike. With plenty of shops, restaurants and activities to fill the day and night, Dupont Circle is a premier location. Toward the beginning of the famous Embassy Row, Dupont Circle is within walking distance of the Indonesian, Indian and Greek Embassies. The Dupont Circle Metro Station has access to the red line. Among the attractions is The Phillips Collection, America's first museum of modern art. On the southern edge of Dupont Circle, the National Geographic Museum offers great sights for visitors of all ages.



Local Dining

THE PEMBROKE

BOQUERIA
BAR DE VINOS | RESTAURANTE

THE GRYPHON

SETTE
BY BOOD
OSTERIA

RAKUYA
JAPANESE KITCHEN + BAR

CITY TAP
KITCHEN & CRAFT

TEDDY
& THE BULLY BAR

SORELLINA

Disclaimer: The information contained herein has been obtained from sources deemed to be reliable, the American Council on Education, and/or their representative, brokers or agents make no guarantees as to the accuracy of the information contained herein and offer the Property without guarantees or warranties of any kind. The Property may be withdrawn without notice. If the recipient of this information has signed a confidentiality agreement regarding this matter, this information is subject to the terms of that agreement.

American Council on Education. All rights reserved.

ACE[®] American
Council on
Education[®]

Rare Opportunity

Coworking at the National Center for Higher Education

1 Dupont Circle

National Center for
Higher Education

Member Benefits:

- Synergy with other institutions of higher education learning and leadership
- Build relationships and facilitate professional development through everyday encounters
- Promote collaboration, learning and connection
- Participate in a sophisticated environment
- Appropriate space sizes for smaller requirements



Rates and Fees (per month):

Virtual Member Fee	\$350
Member Fee (Corner Private Office)	\$2,375
Member Fee (Window Private Office)	\$1,875
Member Fee (Window Combined Office)	\$3,900
Member Fee (Private Office)	\$1,475
Member Fee (Private Combined Office)	\$3,100
Member Fee (Workstation)	\$825
Parking	\$250

Disclaimer: The information contained herein has been obtained from sources deemed to be reliable, the American Council on Education, and/or their representative, brokers or agents make no guarantees as to the accuracy of the information contained herein and offer the Property without guarantees or warranties of any kind. The Property may be withdrawn without notice. If the recipient of this information has signed a confidentiality agreement regarding this matter, this information is subject to the terms of that agreement.

American Council on Education. All rights reserved.

National Center for Higher Education

Suite 450 – *A Co-working Space*

1 Dupont Circle

National Center for
Higher Education

Space

- Single and multi-person private offices and open desk area
- Office and workstation electronic adjustable standing desks
- Shared spaces, meeting rooms, café, lounge and multipurpose areas
- Locks for office doors, cabinets and drawers
- Workstation drawer locks

Services

- Dedicated site and support team
- Access around the clock
- Onsite technical support for day-to-day problem solving
- Postage, couriers, binding, laminating and bulk printing
- Parking Available

Amenities

- Café with basic kitchenette and seating areas
- Conference and meeting rooms
- Technology infrastructure (virtual meeting capabilities,
- Printers available
- Phone booths
- File/copy/workroom
- High speed internet

Space Summary

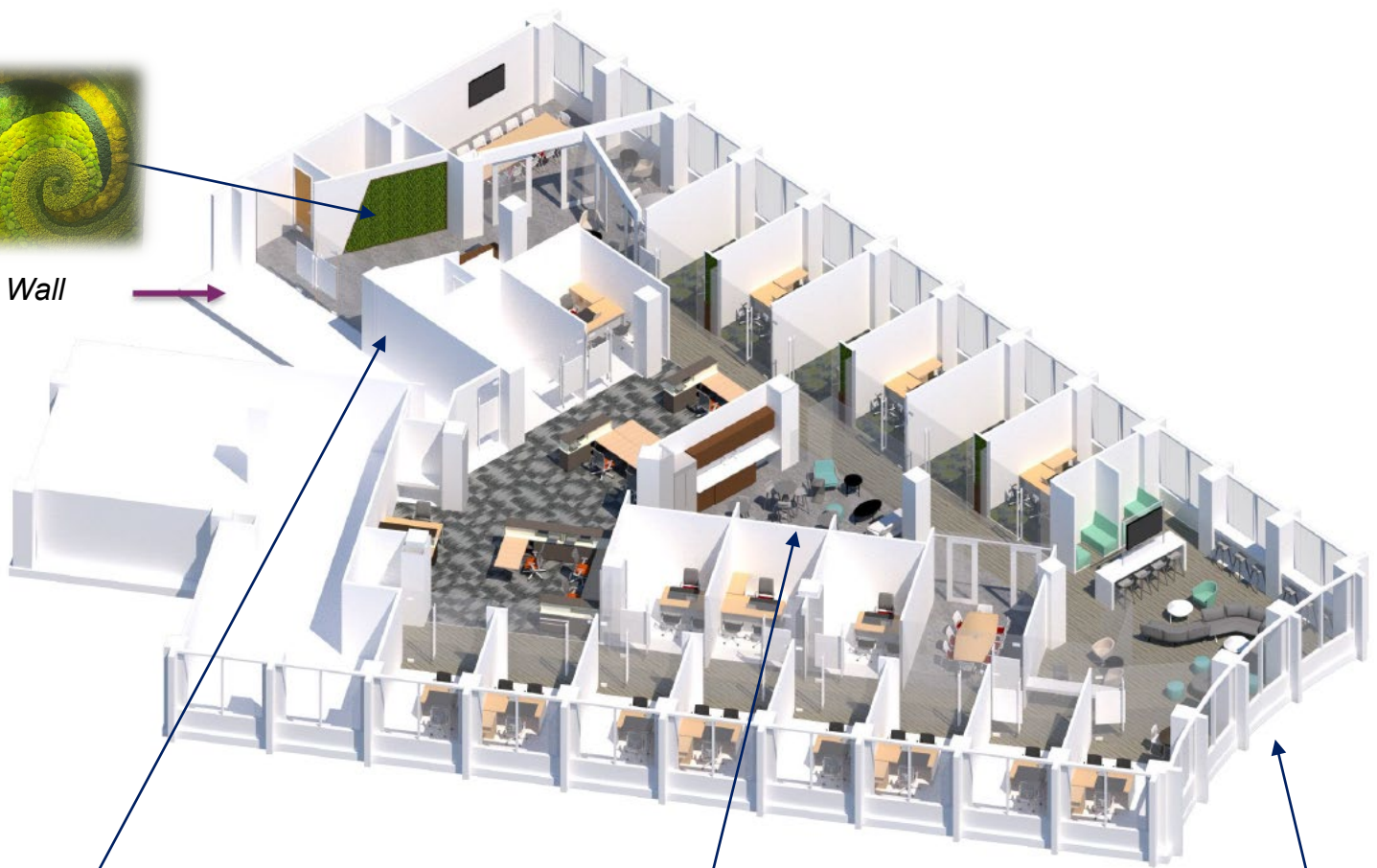
Offices	19
Meeting Room (5-8 people)	2
Conference Room (12+ people)	1
Gateway Office	1
Phone Booths	2
Workstations	11

Disclaimer: The information contained herein has been obtained from sources deemed to be reliable, the American Council on Education, and/or their representative, brokers or agents make no guarantees as to the accuracy of the information contained herein and offer the Property without guarantees or warranties of any kind. The Property may be withdrawn without notice. If the recipient of this information has signed a confidentiality agreement regarding this matter, this information is subject to the terms of that agreement.

American Council on Education. All rights reserved.



Green Wall



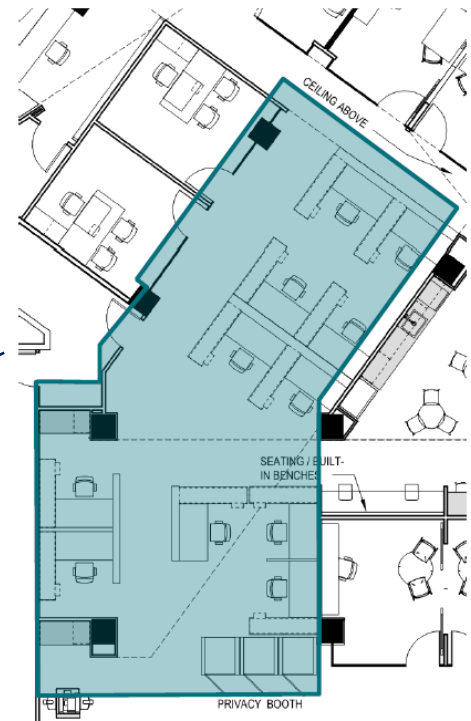
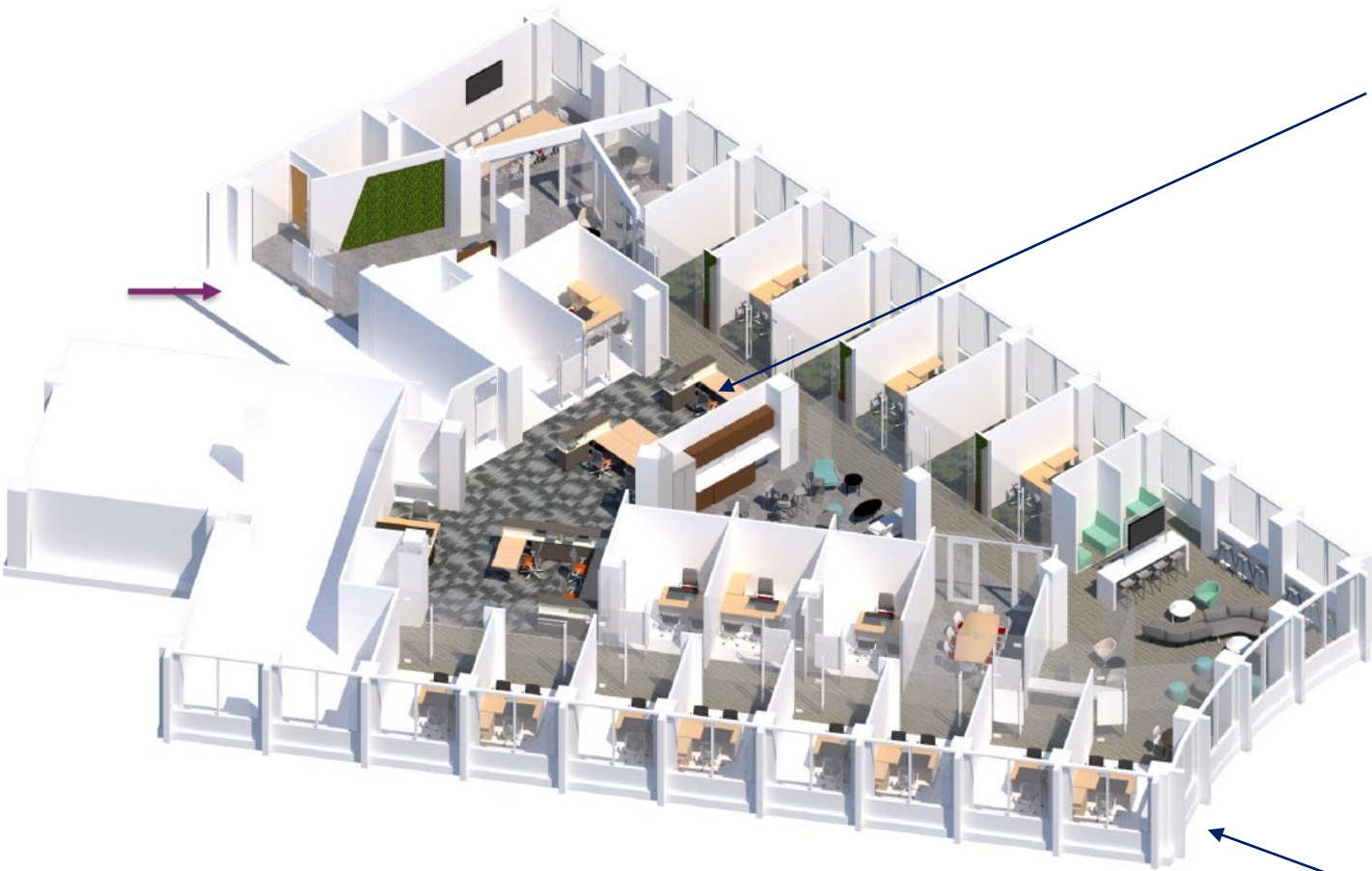
Reception



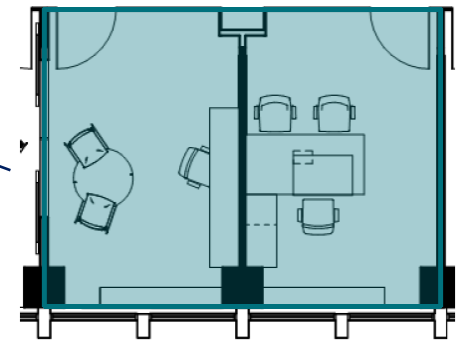
Café



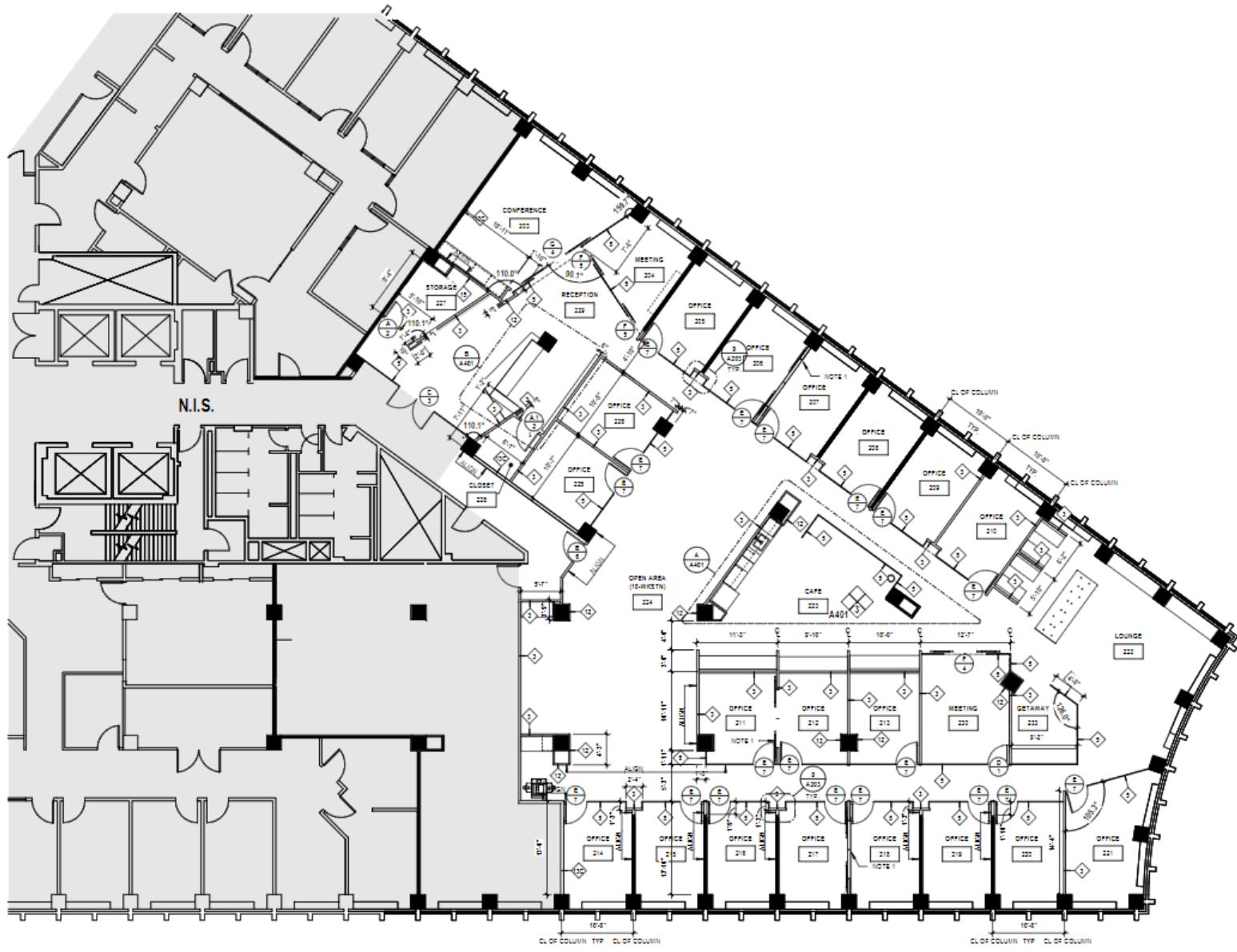
Lounge



Workstation (11 within space)



Office (19 total on floor)





FOR LEASING INFORMATION CONTACT:

Dwayne Carper
NCHE450@acenet.edu
(202) 409-8805

Disclaimer: The information contained herein has been obtained from sources deemed to be reliable, the American Council on Education, and/or their representative, brokers or agents make no guarantees as to the accuracy of the information contained herein and offer the Property without guarantees or warranties of any kind. The Property may be withdrawn without notice. If the recipient of this information has signed a confidentiality agreement regarding this matter, this information is subject to the terms of that agreement.

American Council on Education. All rights reserved.

ACE® American
Council on
Education™