



KINGSLAND SHOPPING CENTRE UNIT TO LET DALSTON

UNIT 22-24, KINGSLAND HIGH STREET, DALSTON, LONDON E8 2LX

Location:

Kingsland Shopping Centre occupies a prominent position on the busy Kingsland High Street in close proximity to Dalston Kingsland and Dalston Junction Stations (London Overground Lines).

Within the scheme there is a diverse mix of multinational and independent operators, including Aldi Local, Costa Coffee, JD Sports, EE, Holland & Barrett, Specsavers and Sainsbury's anchoring the rear of the scheme with Matalan.

The shopping centre benefits from c.315 Car Parking Spaces in an underground car park. The opening times for the centre are 8AM – 10PM from Monday to Saturday & 11AM – 5PM on Sundays.

Rent:

On Application.

Accommodation:

The unit is arranged over Ground Floor and Basement only and has the following approximate net internal areas:

Ground Floor:	2,489 sq. ft. (231.24 m²)
Basement:	1,320 sq. ft. (122.60 m²)

Lease:

The premises are available by way of a new lease for a term to be agreed.

Service Charge:

The service charge for 2022 was £23,489. Further service charge information can be provided upon request.

Rates:

Interested parties are advised to make their own enquiries directly with the Local Authority.

Legal Costs:

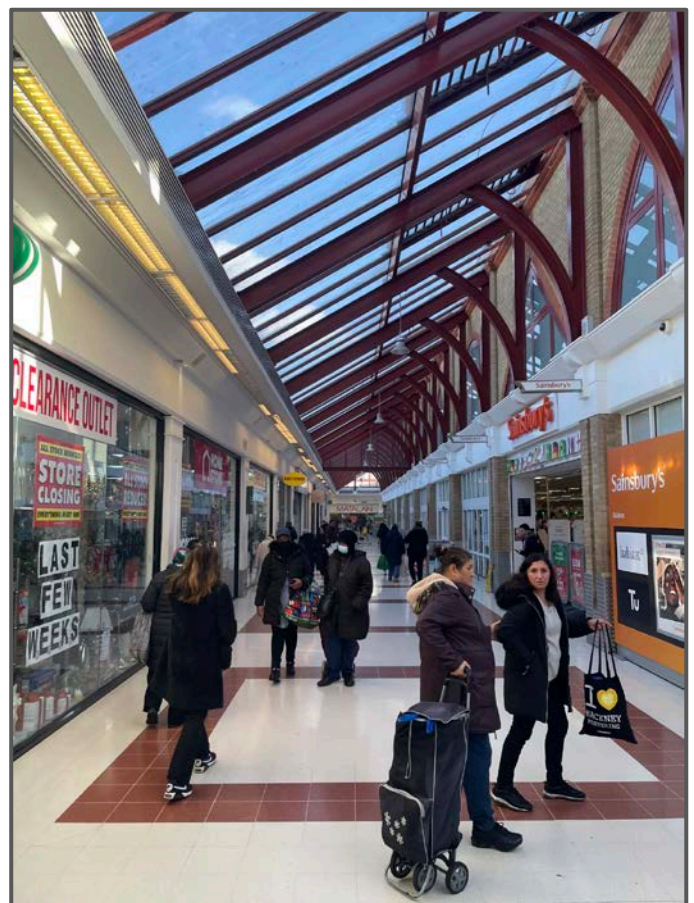
Each party to bear their own legal costs.

Viewings:

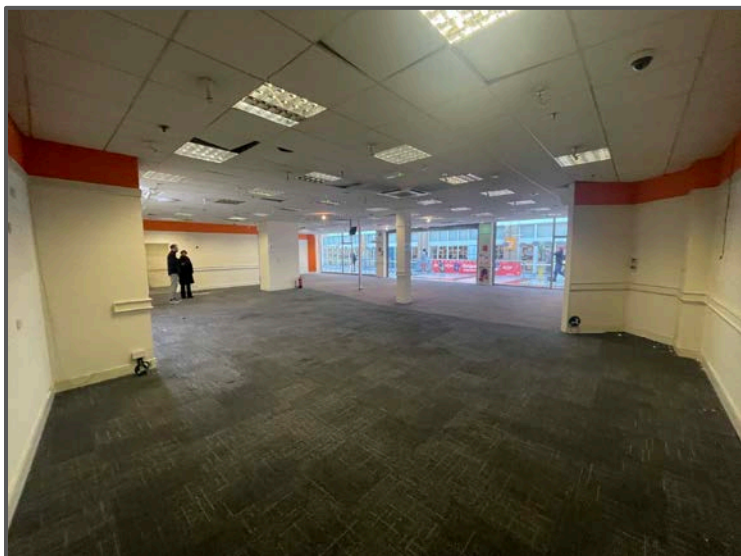
Please contact:

Ryan Mylroie / ryan@jenkinslaw.co.uk

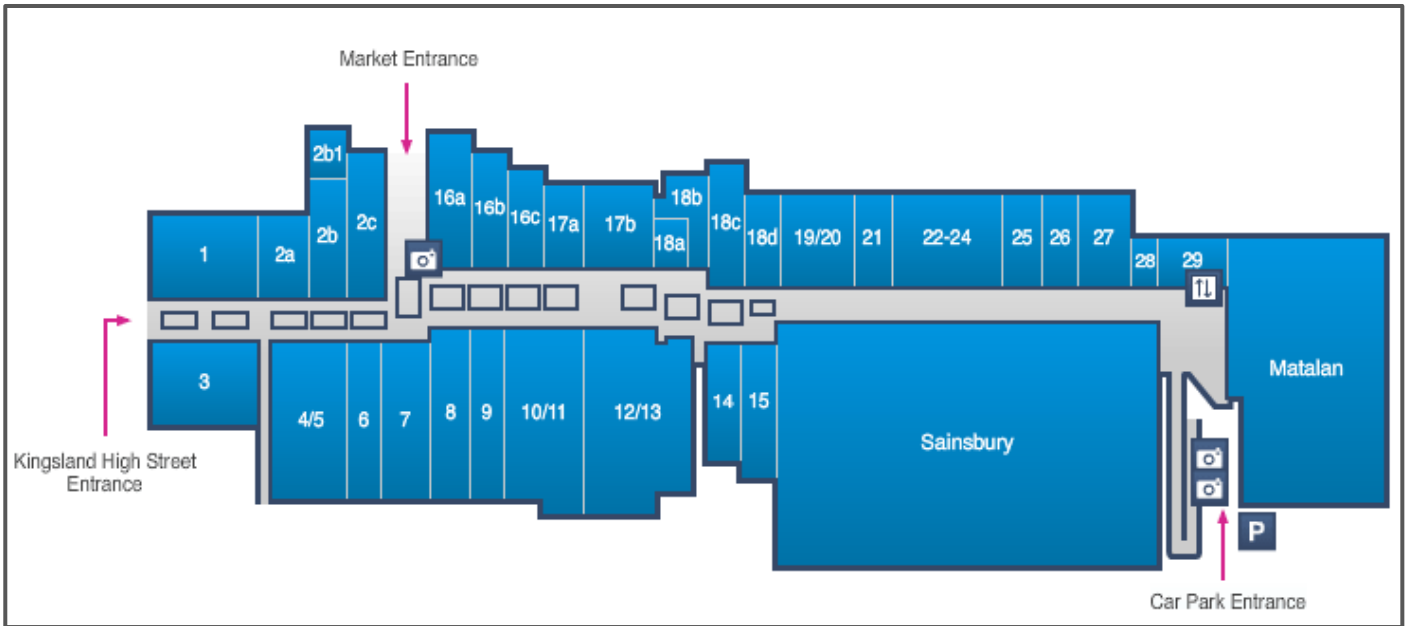
Kyle McGuire / kyle@jenkinslaw.co.uk



Photos of the Subject Unit:



Shopping Centre Plan:



Location Map:

