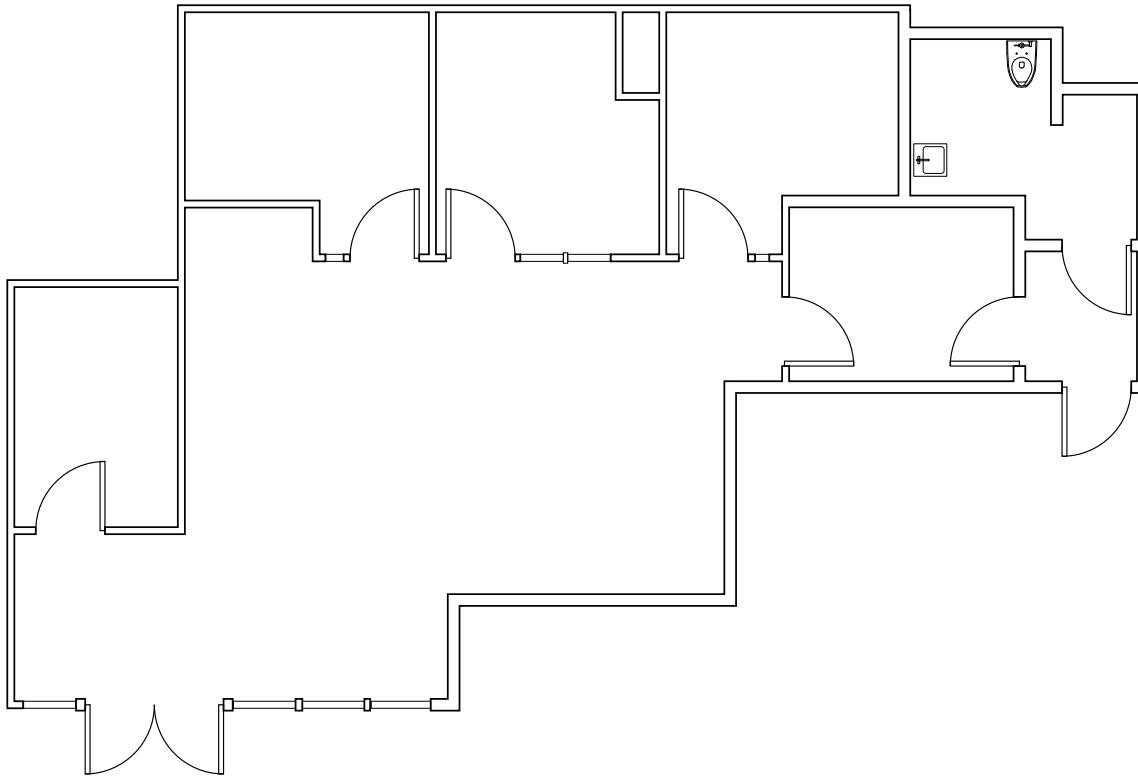


CITY HALL PLAZA

900 ELM STREET | MANCHESTER, NH

1ST FLOOR - 1,476 RSF



FOR MORE INFORMATION, PLEASE CONTACT:

Thomas Farrelly, SIOR
Executive Managing Director
+603 661 4854
thomas.farrelly@cushwake.com

Sue Ann Johnson
Managing Director
+603 490 6900
sueann.johnson@cushwake.com

Cushman & Wakefield
of New Hampshire, Inc.
900 Elm Street, Suite 1301
Manchester, NH 03101
+603 628 2800
cushmanwakefield.com

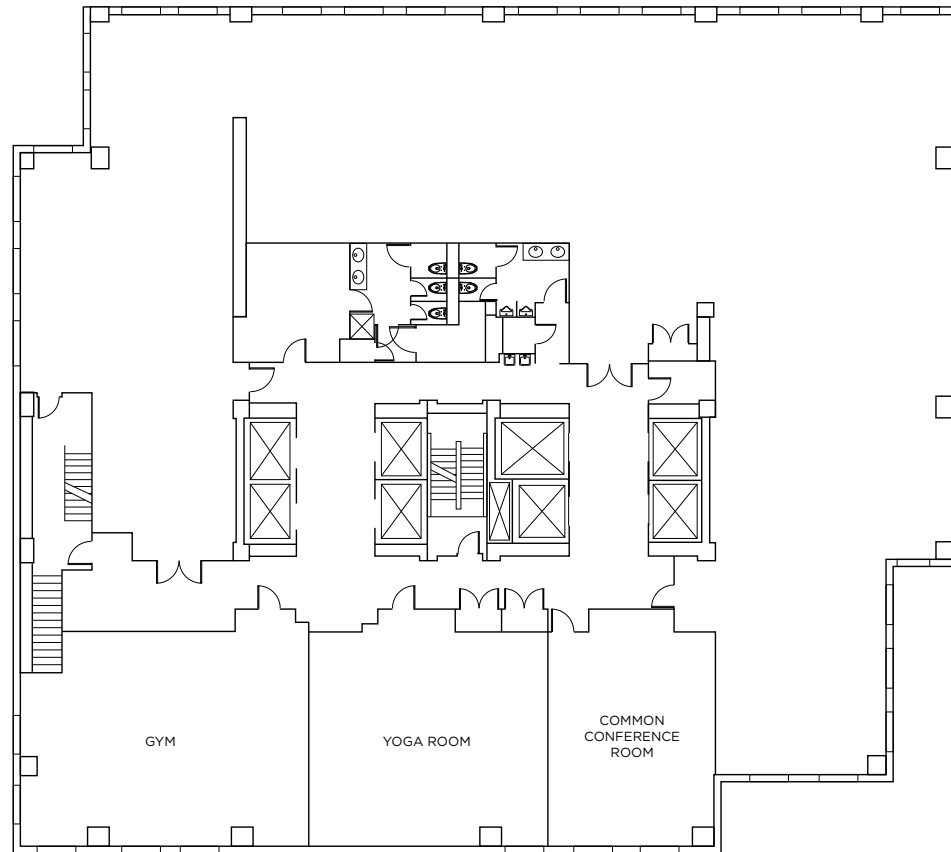
BRADY SULLIVAN
PROPERTIES

CUSHMAN & WAKEFIELD

CITY HALL PLAZA

900 ELM STREET | MANCHESTER, NH

5TH FLOOR - 9,800 RSF



FOR MORE INFORMATION, PLEASE CONTACT:

Thomas Farrelly, SIOR
Executive Managing Director
+603 661 4854
thomas.farrelly@cushwake.com

Sue Ann Johnson
Managing Director
+603 490 6900
sueann.johnson@cushwake.com

Cushman & Wakefield
of New Hampshire, Inc.
900 Elm Street, Suite 1301
Manchester, NH 03101
+603 628 2800
cushmanwakefield.com

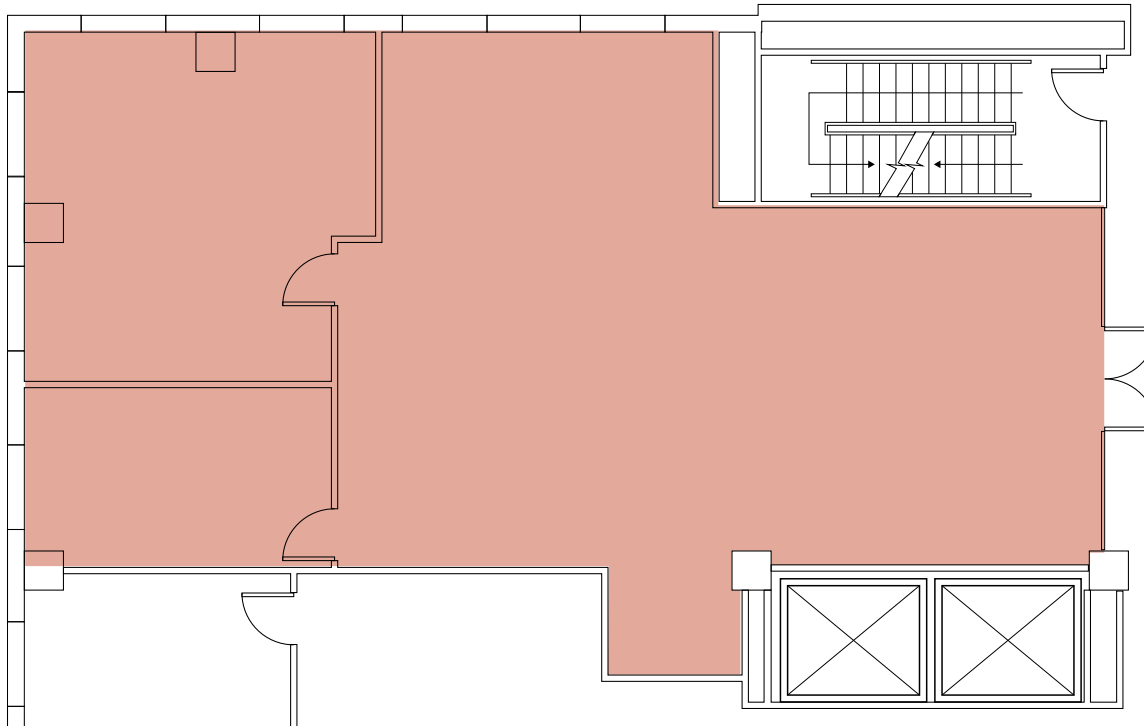
BRADY SULLIVAN
PROPERTIES

CUSHMAN & WAKEFIELD

CITY HALL PLAZA

900 ELM STREET | MANCHESTER, NH

SUITE 703 - 2,191 RSF



FOR MORE INFORMATION, PLEASE CONTACT:

Thomas Farrelly, SIOR
Executive Managing Director
+603 661 4854
thomas.farrelly@cushwake.com

Sue Ann Johnson
Managing Director
+603 490 6900
sueann.johnson@cushwake.com

Cushman & Wakefield
of New Hampshire, Inc.
900 Elm Street, Suite 1301
Manchester, NH 03101
+603 628 2800
cushmanwakefield.com

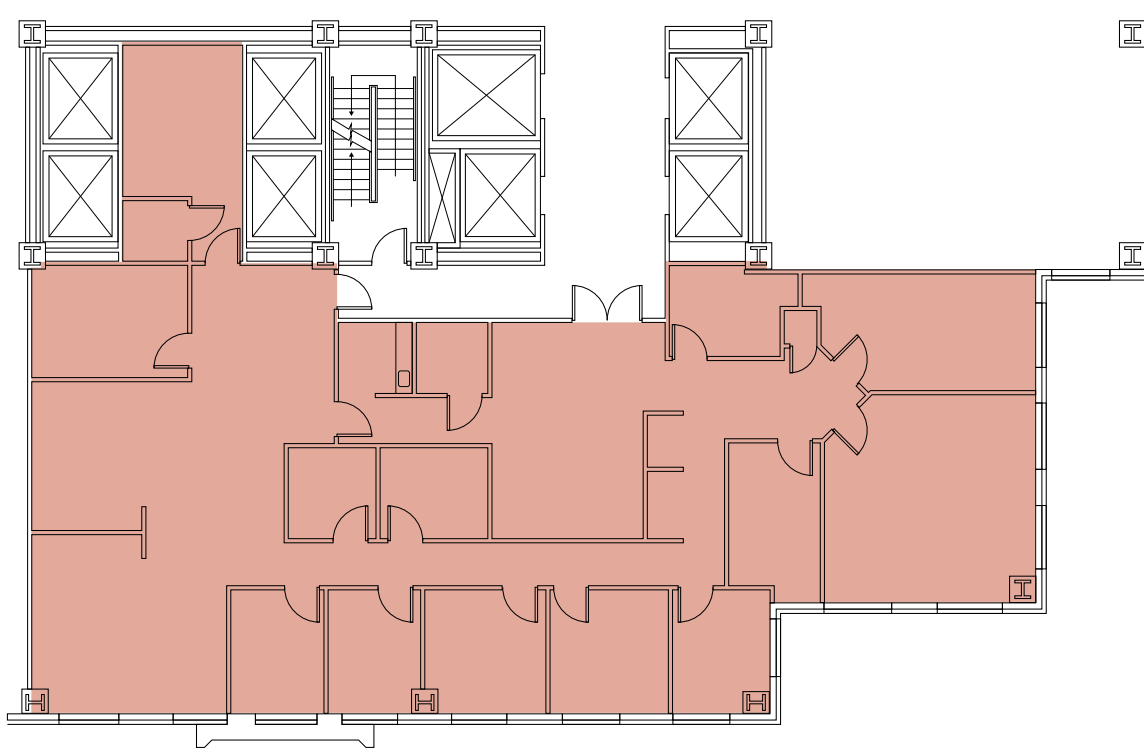
BRADY SULLIVAN
PROPERTIES

CUSHMAN & WAKEFIELD

CITY HALL PLAZA

900 ELM STREET | MANCHESTER, NH

8TH FLOOR - 4,414 RSF



FOR MORE INFORMATION, PLEASE CONTACT:

Thomas Farrelly, SIOR
Executive Managing Director
+603 661 4854
thomas.farrelly@cushwake.com

Sue Ann Johnson
Managing Director
+603 490 6900
sueann.johnson@cushwake.com

Cushman & Wakefield
of New Hampshire, Inc.
900 Elm Street, Suite 1301
Manchester, NH 03101
+603 628 2800
cushmanwakefield.com

BRADY SULLIVAN
PROPERTIES

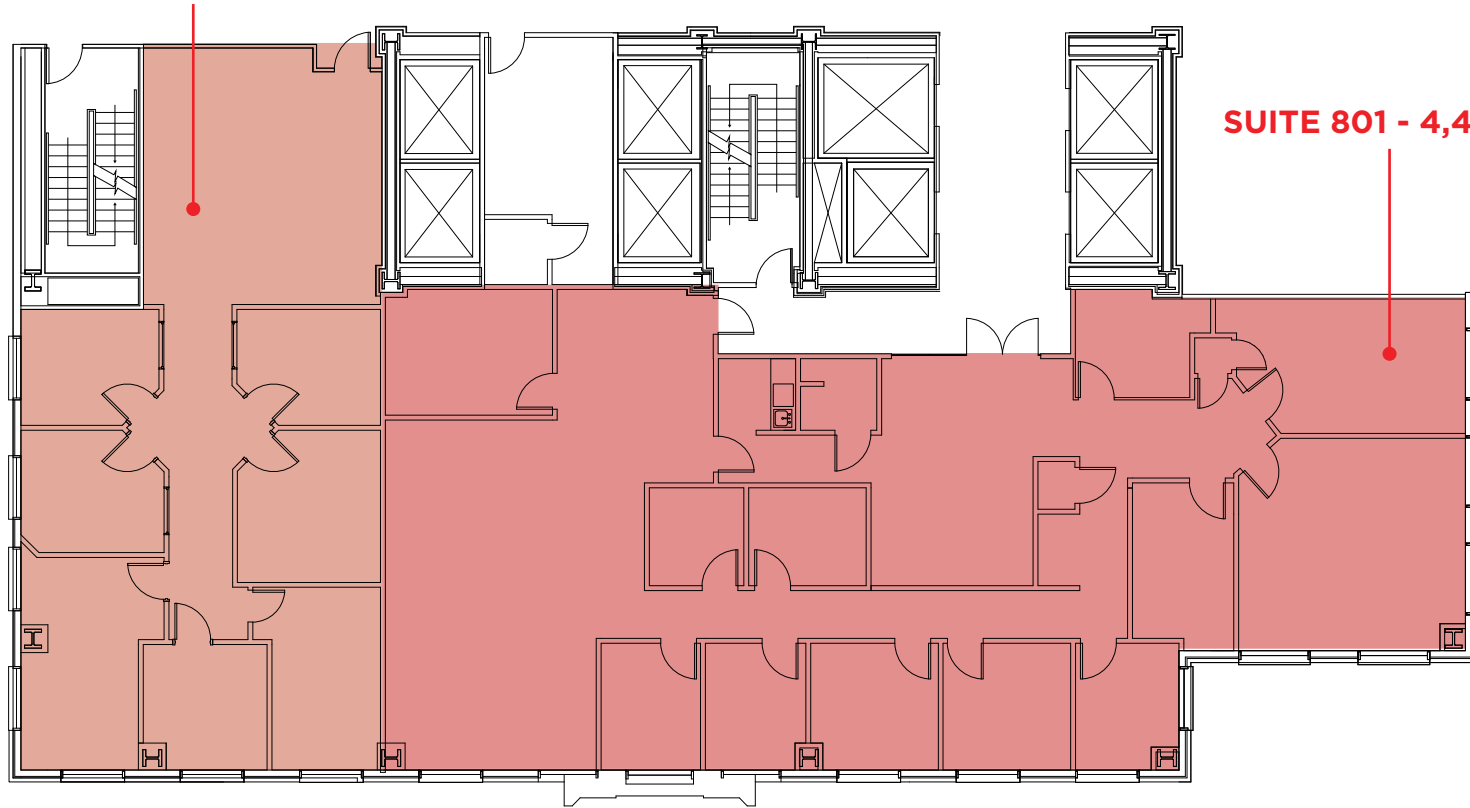
CUSHMAN & WAKEFIELD

CITY HALL PLAZA

900 ELM STREET | MANCHESTER, NH

8TH FLOOR - 6,421 RSF

SUITE 802 - 2,007 RSF



SUITE 801 - 4,414 RSF

FOR MORE INFORMATION, PLEASE CONTACT:

Thomas Farrelly, SIOR
Executive Managing Director
+603 661 4854
thomas.farrelly@cushwake.com

Sue Ann Johnson
Managing Director
+603 490 6900
sueann.johnson@cushwake.com

Cushman & Wakefield
of New Hampshire, Inc.
900 Elm Street, Suite 1301
Manchester, NH 03101
+603 628 2800
cushmanwakefield.com

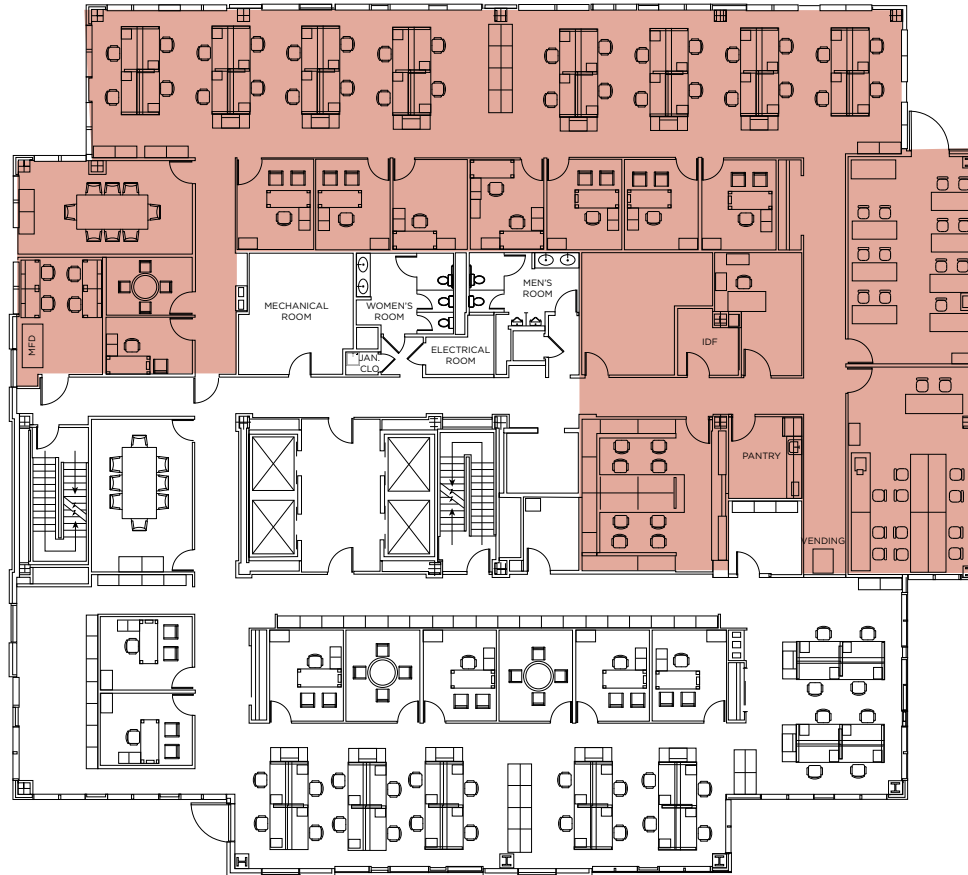
BRADY SULLIVAN
PROPERTIES

CUSHMAN & WAKEFIELD

CITY HALL PLAZA

900 ELM STREET | MANCHESTER, NH

16TH FLOOR - 8,383 RSF



FOR MORE INFORMATION, PLEASE CONTACT:

Thomas Farrelly, SIOR
Executive Managing Director
+603 661 4854
thomas.farrelly@cushwake.com

Sue Ann Johnson
Managing Director
+603 490 6900
sueann.johnson@cushwake.com

Denis C. J. Dancoes
Executive Director
+603 628 2801
denis.dancoes@cushwake.com

Cushman & Wakefield
of New Hampshire, Inc.
900 Elm Street, Suite 1301
Manchester, NH 03101
+603 628 2800
cushmanwakefield.com

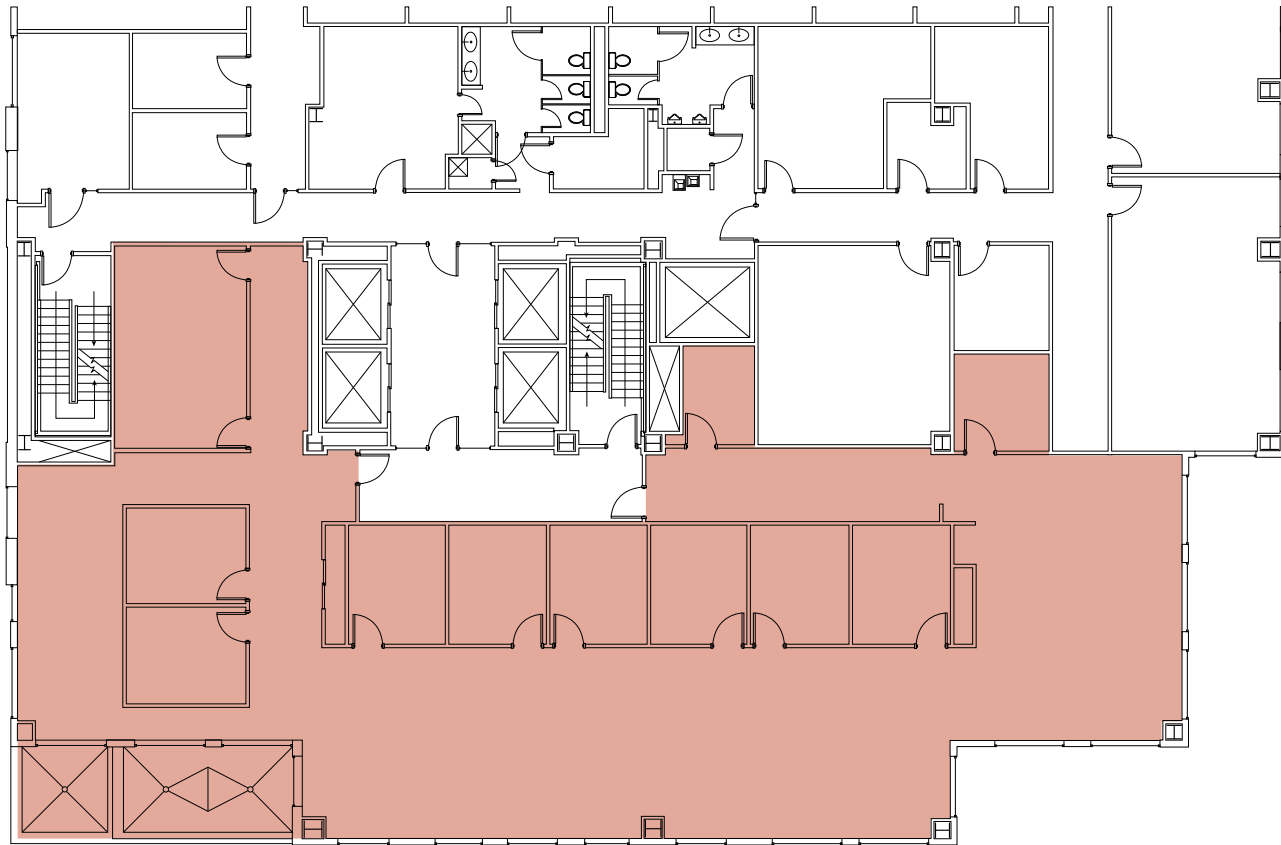
BRADY SULLIVAN
PROPERTIES



CITY HALL PLAZA

900 ELM STREET | MANCHESTER, NH

16TH FLOOR - 6,330 RSF



FOR MORE INFORMATION, PLEASE CONTACT:

Thomas Farrelly, SIOR
Executive Managing Director
+603 661 4854
thomas.farrelly@cushwake.com

Sue Ann Johnson
Managing Director
+603 490 6900
sueann.johnson@cushwake.com

Cushman & Wakefield
of New Hampshire, Inc.
900 Elm Street, Suite 1301
Manchester, NH 03101
+603 628 2800
cushmanwakefield.com

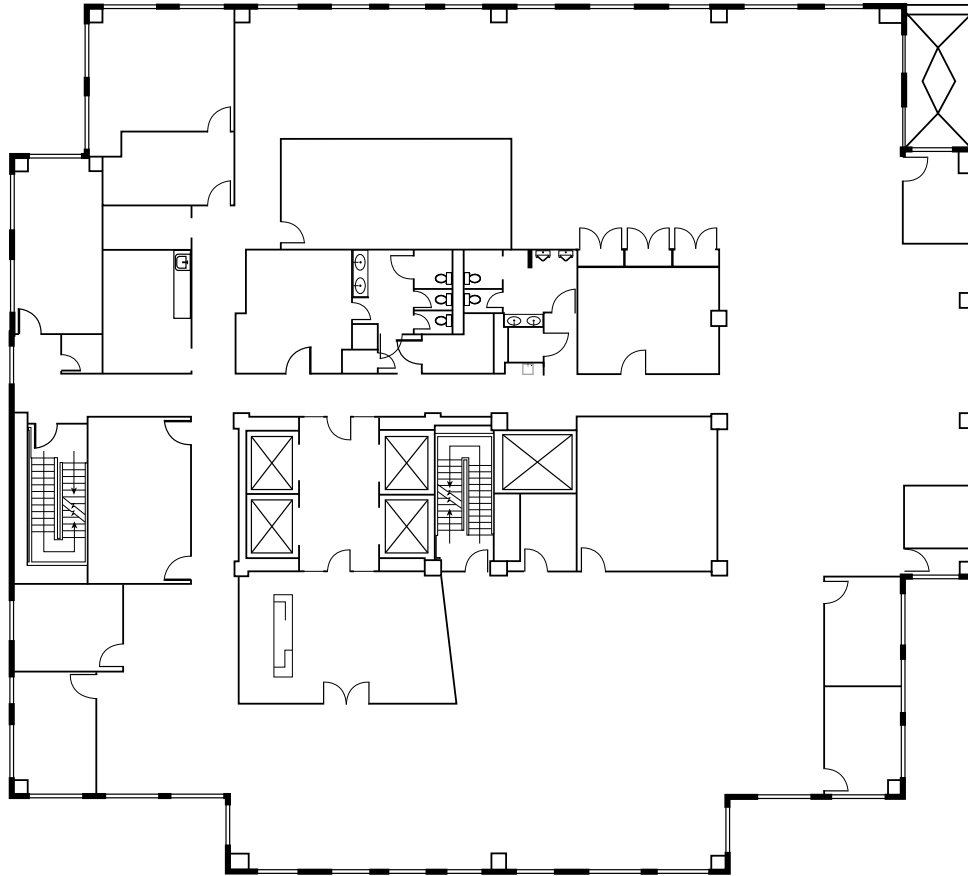
BRADY SULLIVAN
PROPERTIES

CUSHMAN & WAKEFIELD

CITY HALL PLAZA

900 ELM STREET | MANCHESTER, NH

18TH FLOOR - 14,709 RSF



FOR MORE INFORMATION, PLEASE CONTACT:

Thomas Farrelly, SIOR
Executive Managing Director
+603 661 4854
thomas.farrelly@cushwake.com

Sue Ann Johnson
Managing Director
+603 490 6900
sueann.johnson@cushwake.com

Cushman & Wakefield
of New Hampshire, Inc.
900 Elm Street, Suite 1301
Manchester, NH 03101
+603 628 2800
cushmanwakefield.com

BRADY SULLIVAN
PROPERTIES

 **CUSHMAN &
WAKEFIELD**