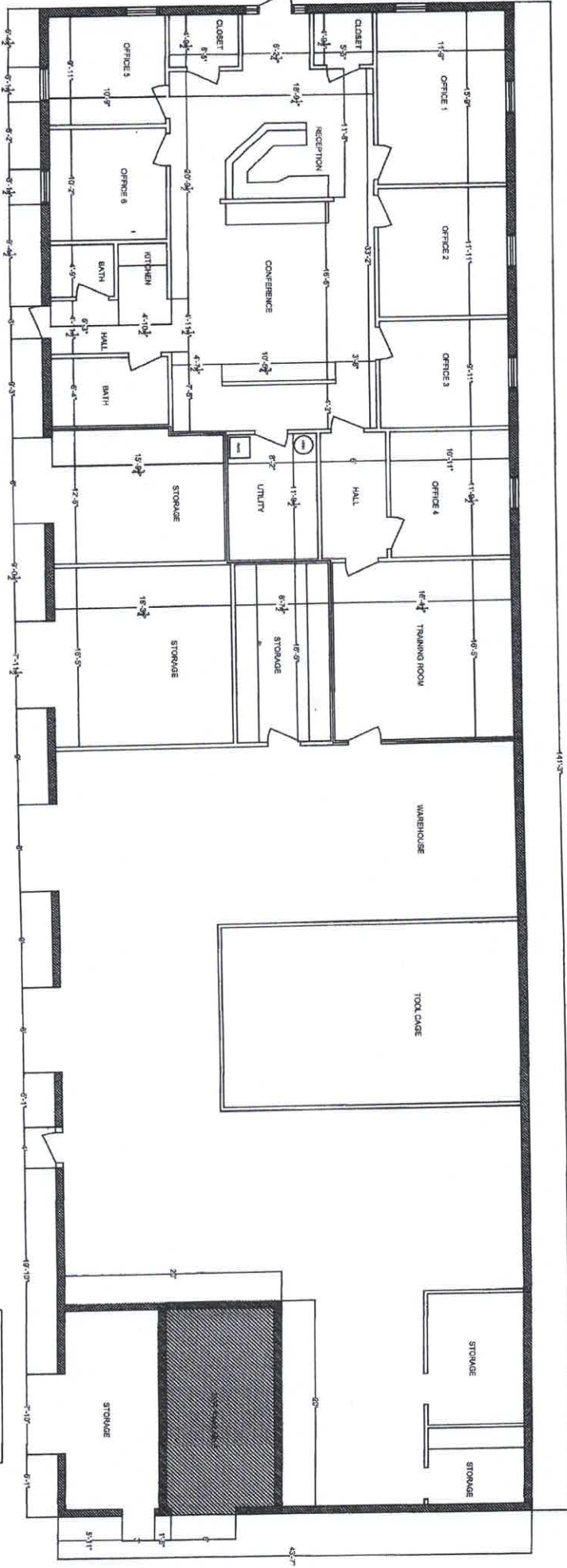
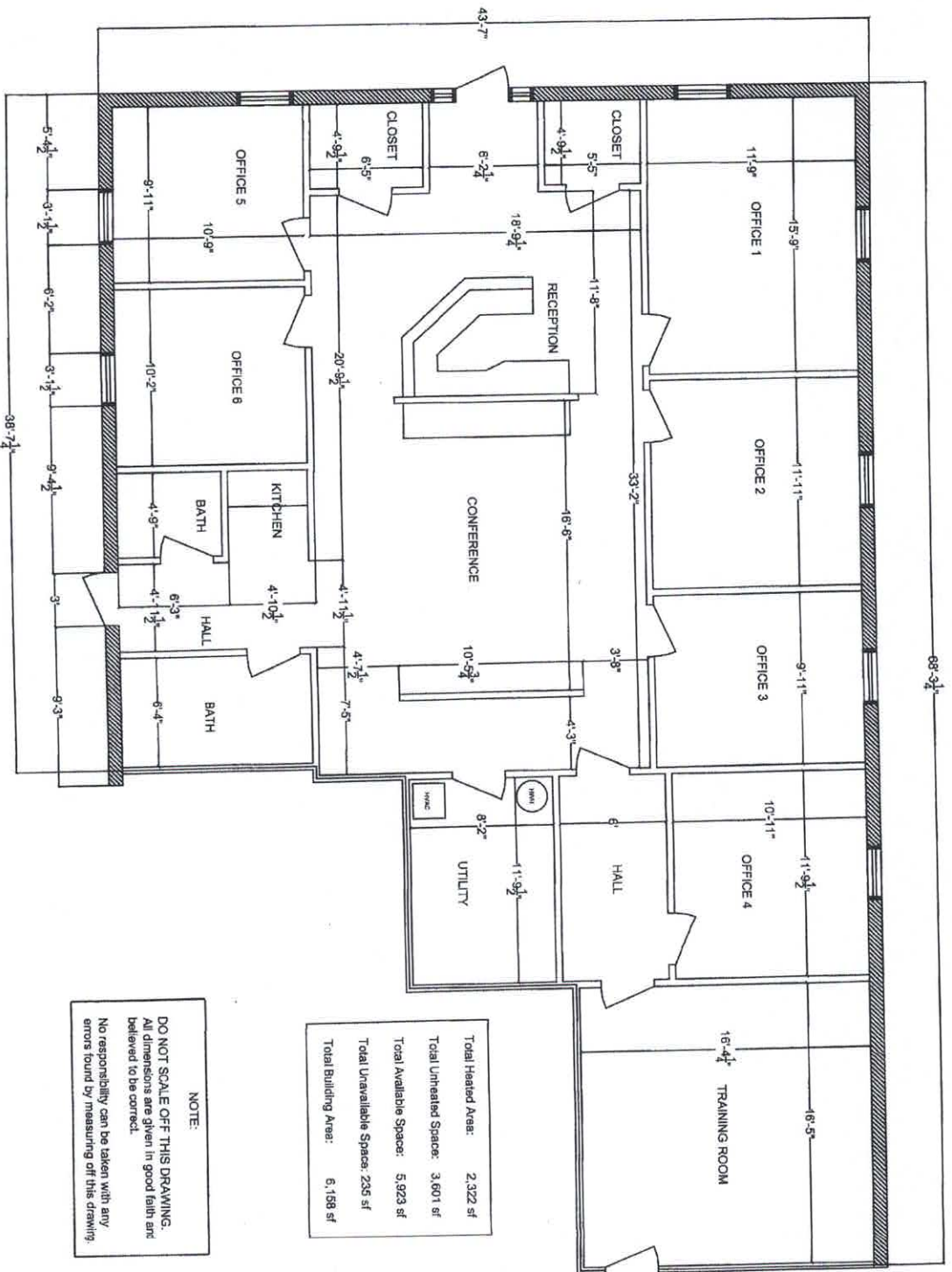


Total Finished Area: 2,322 sf
 Total Unleased Space: 3,807 sf
 Total Available Space: 5,923 sf
 Total Unavailable Space: 226 sf
 Total Building Area: 6,126 sf

12484C WARWICK BLVD, NEWPORT NEWS, VA 23606

NOTE
 DO NOT SCALE OFF THIS DRAWING.
 Dimensions shown on this plan shall be
 believed to be correct.
 No responsibility can be taken for any
 errors shown by measuring off this drawing.





Total Heated Area:	2,322 sf
Total Unheated Space:	3,601 sf
Total Available Space:	5,923 sf
Total Unavailable Space:	235 sf
Total Building Area:	6,158 sf

NOTE:
 DO NOT SCALE OFF THIS DRAWING.
 All dimensions are given in good faith and believed to be correct.
 No responsibility can be taken with any errors found by measuring off this drawing.

12484C WARWICK BLVD, NEWPORT NEWS, VA 23606