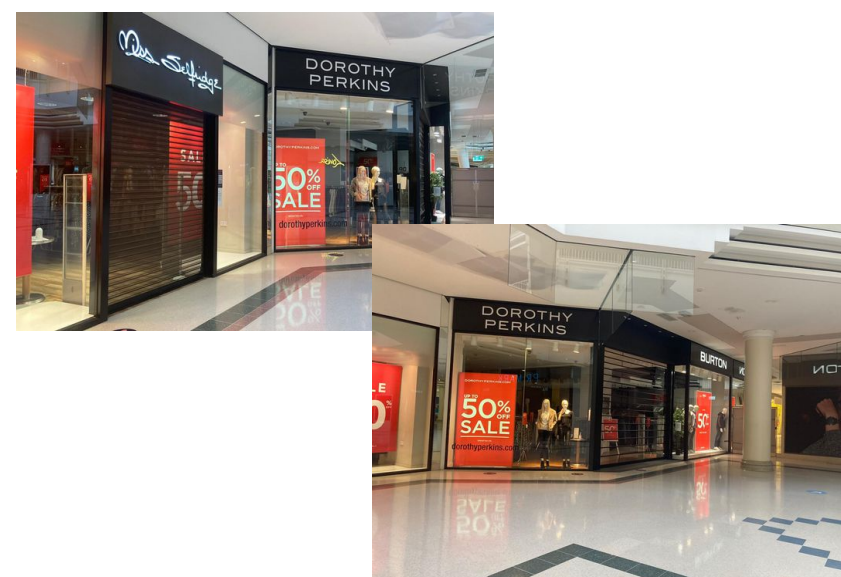


The Potteries Shopping Centre Hanley

Unit 111-112



SHOP TO LET

LOCATION

The Potteries Shopping Centre provides the focus for the prime retail shopping destination for Stoke on Trent. The scheme comprises a mix of retail and leisure, incorporating 94 units over 636,000 sq ft with 1,200 car parking spaces on site. The Centre is anchored by **Primark, Next, H&M** and **River Island** amongst others.

SITUATION

The unit is located in the Middle Mall with neighbouring occupiers including **Primark, JD Sports, The Entertainer, Superdry** and **River Island**.

LEASE

The premises are available by way of a new lease for a term to be agreed.

RENT

On Application

LEGAL COSTS

Each party to be responsible for their own legal costs.

EPC

A copy of the Energy Performance Certificate is available on request.

ACCOMMODATION

Ground Floor	10,151 sq ft	943 sq m
--------------	--------------	----------

BUSINESS RATES & SERVICE CHARGE

Rateable Value (2023)	£149,000
Service Charge (2022)	£102,620

This information is for guidance only. Interested parties are advised to verify figures with the local authority.

VIEWING

For further information or to arrange a viewing, please contact:

BWD

Richard Bidwell
07747534357
rbidwell@bwdretail.co.uk

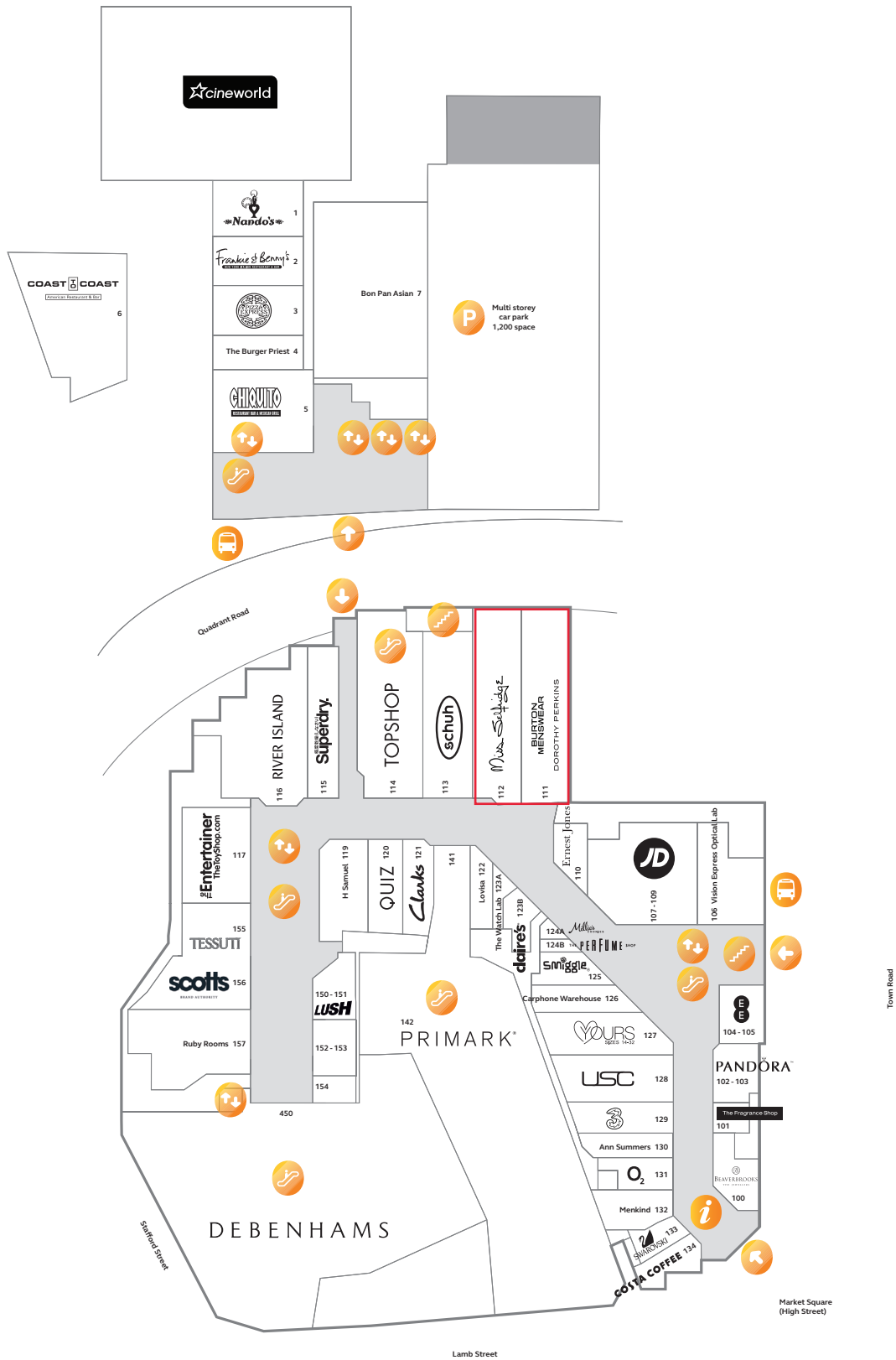
Guy Webber
07785933174
gwebber@bwdretail.co.uk

or joint agents:







Barker Proudlove

0161 631 2852

Middle mall



Key

-  Entrance
-  Car park
-  Lifts
-  Escalators
-  Stairs
-  Toilets

Bidwell Webber De-Pons Ltd, 4th Floor Victoria House,
114-116 Colmore Row, Birmingham B3 3BD
T: 0121 262 6540 www.bwdretail.co.uk

