

# RANCHO DEL REY BUSINESS CENTER CHULA VISTA, CA 91910



**KIMBERLY CHANELLE CLARK, ESQ.**

Senior Vice President | Partner

858.458.3343 | [kclark@voitco.com](mailto:kclark@voitco.com)

Lic. 01439305

**Voit**  
REAL ESTATE SERVICES

**THE CLARK TEAM**

# PROPERTY FEATURES



This ± 60,098 SF Multi-Tenant Office/Industrial project features panoramic canyon views, extensive use of glass and is an excellent corporate image facility. Office and industrial spaces available. Restaurants and retail nearby.

- 24' Clear Height in Warehouse
- Fully Sprinklered
- Grade Level Loading Doors
- Tenants in Area Include: Costco, Home Depot, Regal Cinemas, Petsmart and 24 Hour Fitness



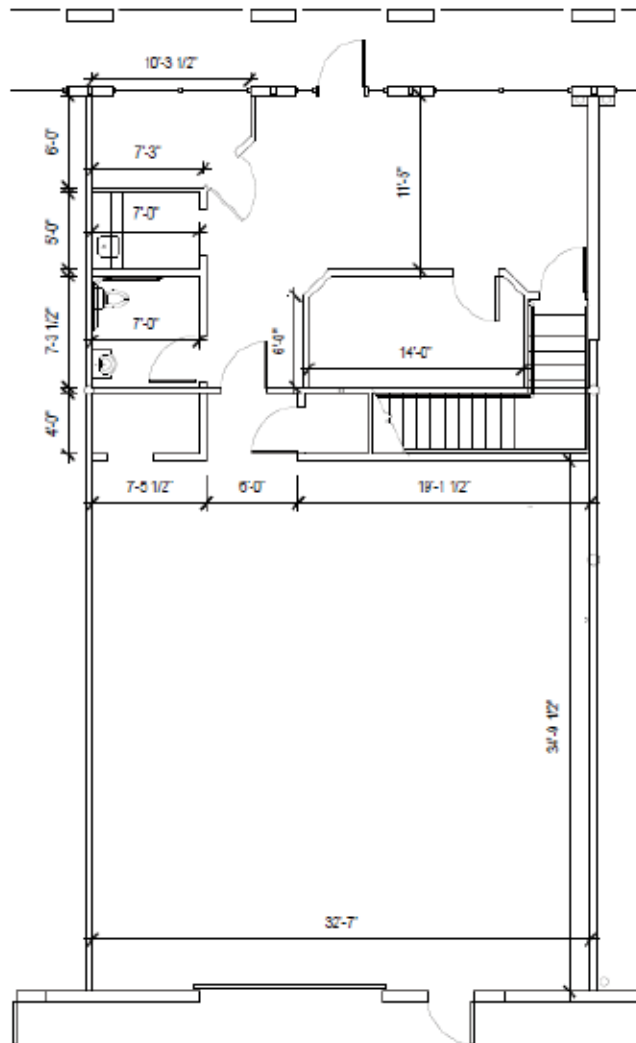
# AVAILABILITY

SUITE	SQUARE FEET	Rate	COMMENTS
1057 - E	±2,970	\$2.05/SF + \$0.22/SF CAMs	
1059 - D, E, F	±4,224	\$2.05/SF + \$0.22/SF CAMs	

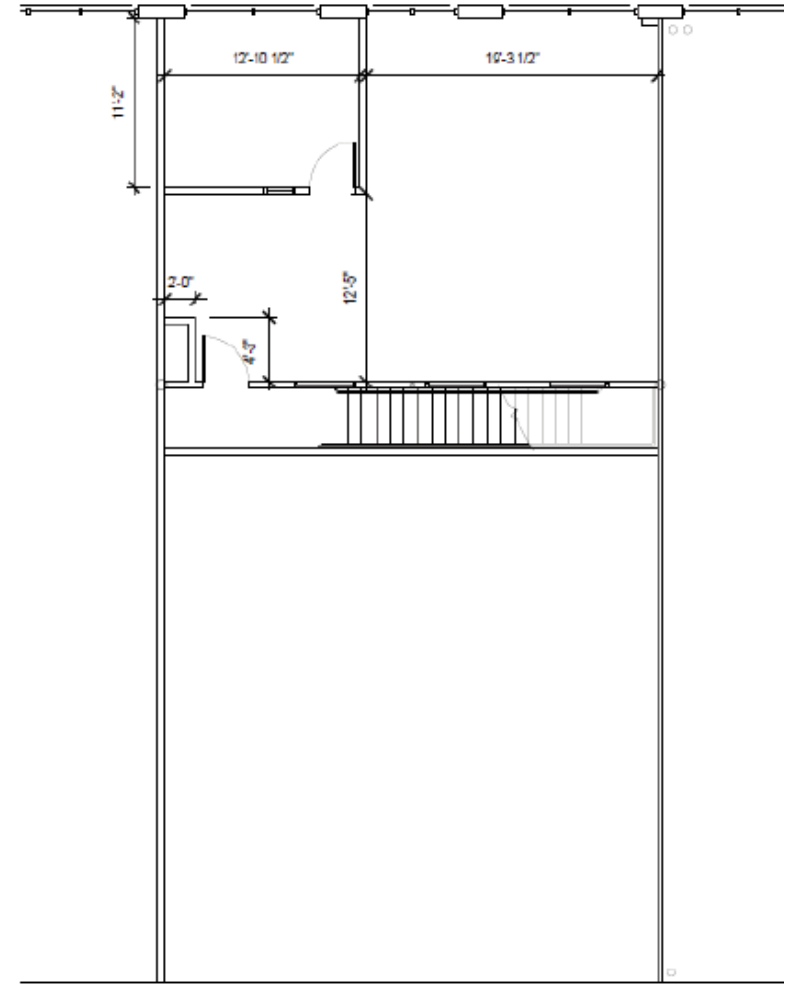


## SUITES E

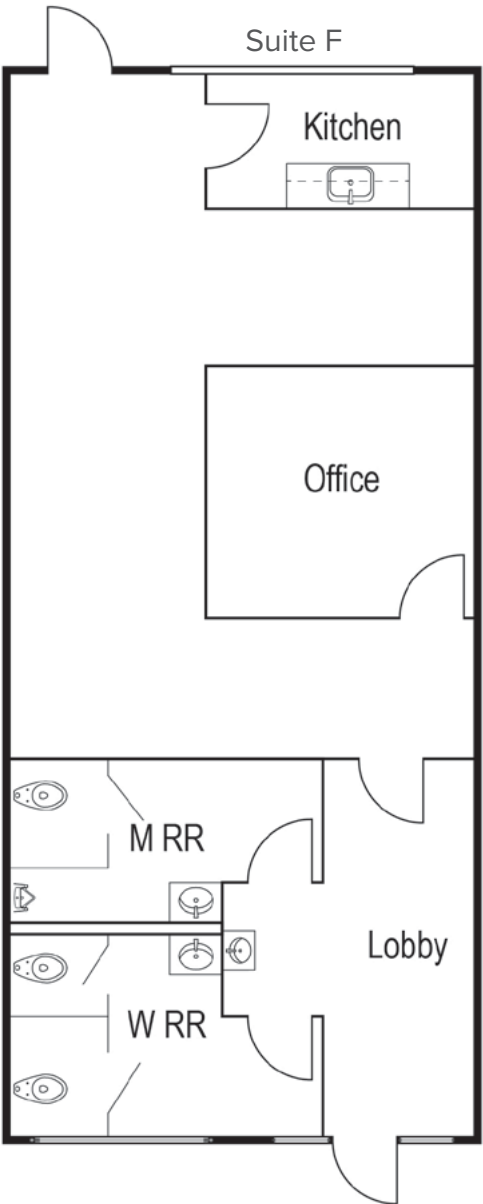
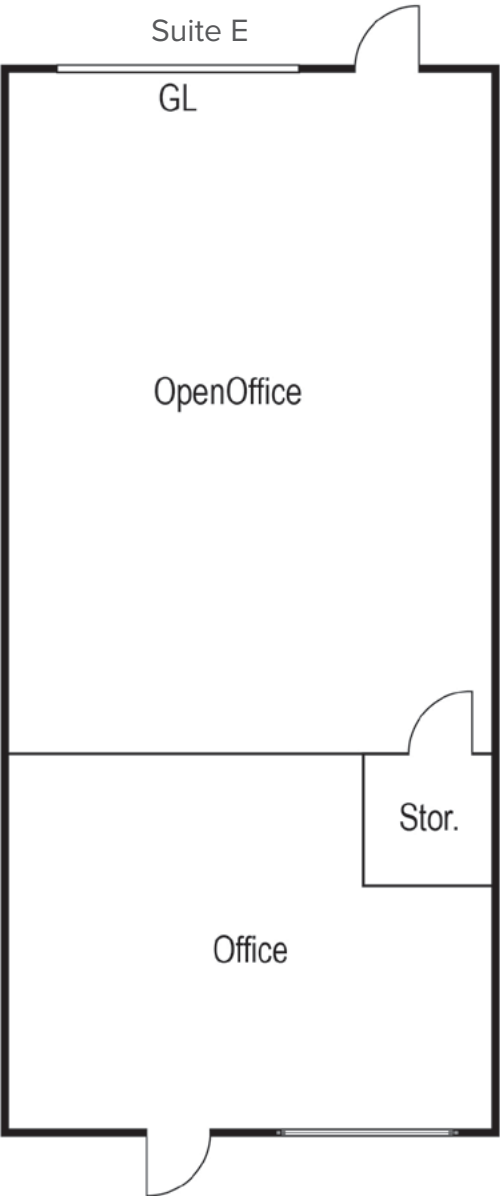
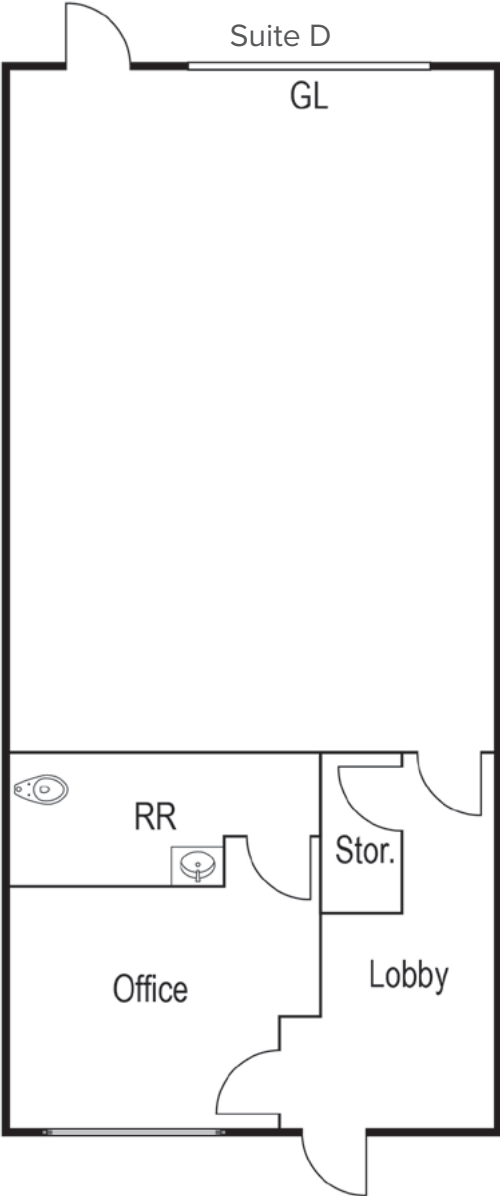
GROUND FLOOR



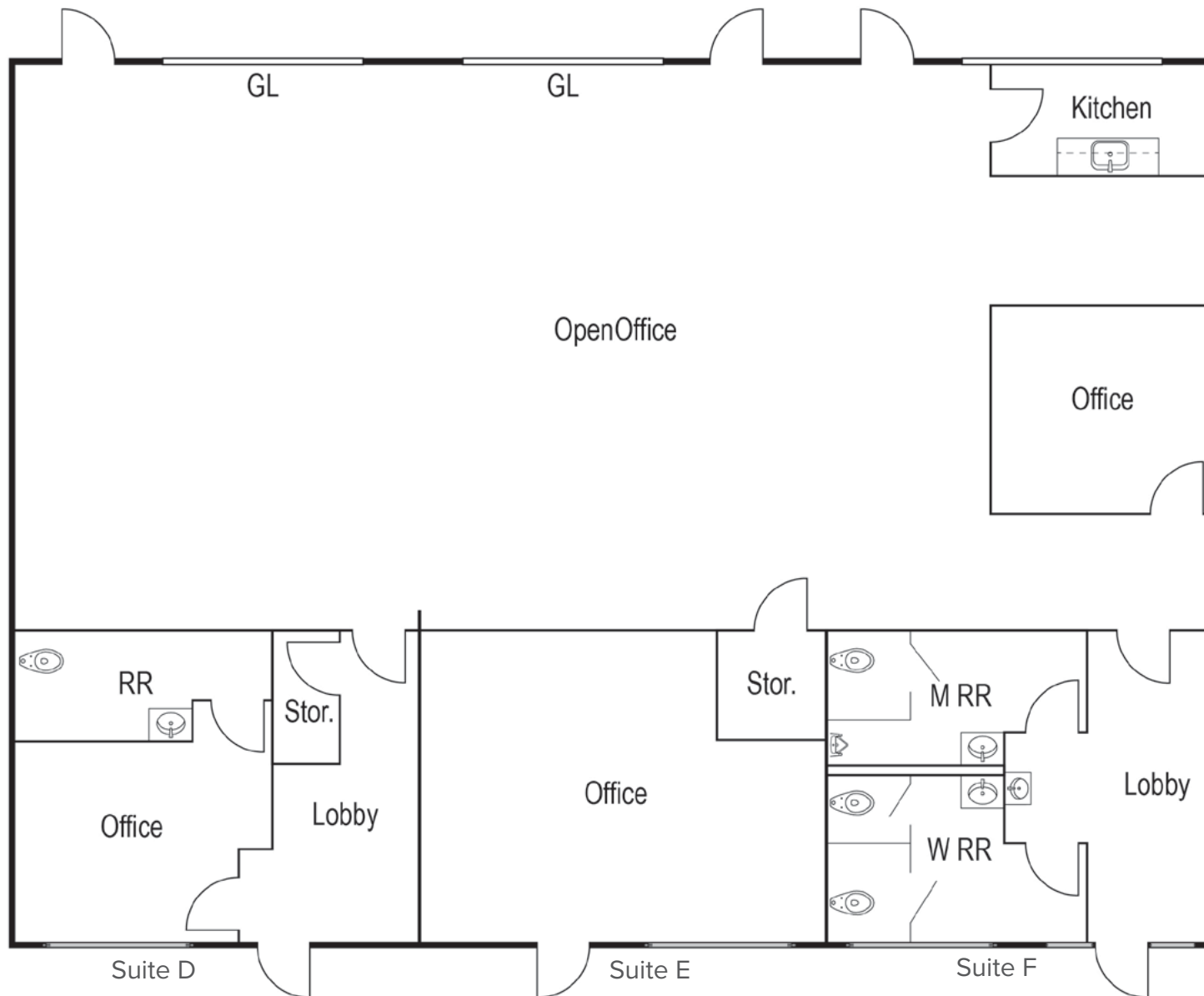
MEZZANINE



SUITES D-F



SUITES D-F





SUBJECT PROPERTY

REGAL CINEMAS

COSTCO WHOLESALE

TIERRA DEL REY

Rubio's FRESH MEXICAN GRILL

PIZZA PAPA JOHN'S

Balboa Thrift and Loan Member FDIC

AMENA CT

CANARIO CT

PET EMERGENCY & SPECIALTY CENTER

BURGER KING

24 FITNESS

EAST H STREET

**KIMBERLY CHANELLE CLARK, ESQ.**

Senior Vice President | Partner  
Lic. # 01439305  
858.458.3343  
kclark@voitco.com

**Voit**  
REAL ESTATE SERVICES



4180 La Jolla Village Drive, Suite 100, La Jolla, CA 92037 • 858.453.0505 • 858.408.3976 Fax • Lic #01991785 | www.voitco.com

Real People. Real Solutions.®

Licensed as a Real Estate Broker and Salesperson by the DRE. The information contained herein has been obtained from sources we deem reliable. While we have no reason to doubt its accuracy, we do not guarantee it. ©202 Voit Real Estate Services, Inc. All Rights Reserved. Real People. Real Solutions.® is a registered trademark of Voit Real Estate Services.