

OLD WINERY III

- 9812 OLD WINERY PLACE, SACRAMENTO, CA
- ±6,120 SF FLEX UNIT AVAILABLE FOR LEASE

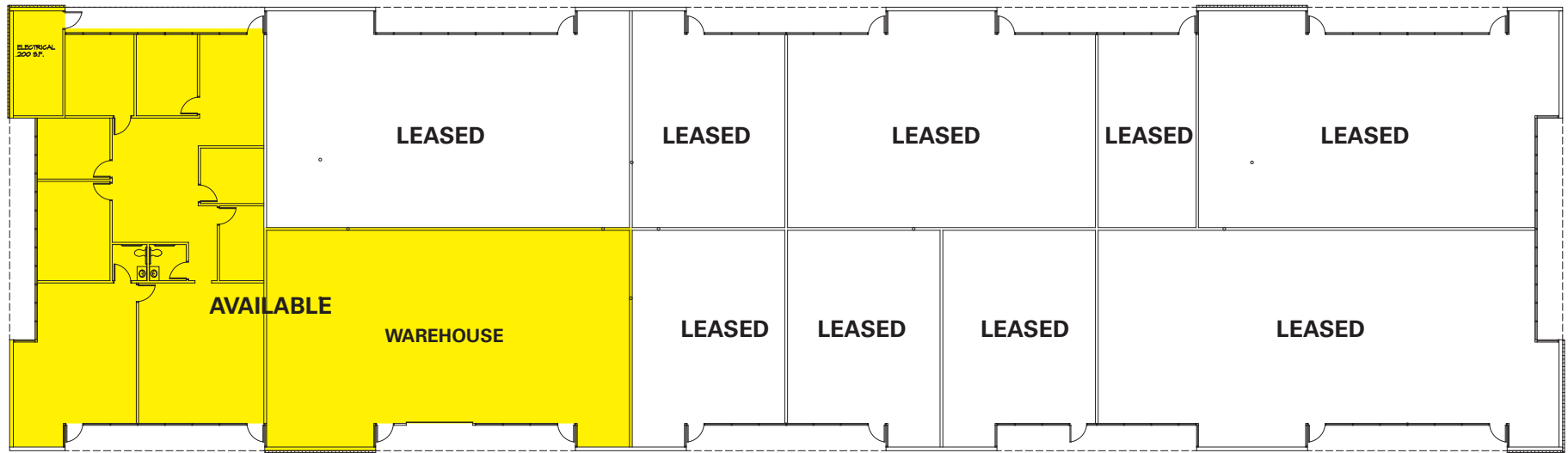
- Flex Space Available with Warehouse Space and Grade Level Doors
- Professional Business Park Setting
- Attractive Landscaping
- Professionally Managed
- Immediate Access to Light Rail
- Excellent Access to Highway 50
- Concrete Tilt-Up Construction
- Warehouse Space

HIGHLIGHTS

NEWMARK

MIKE SMITH DIRECTOR | 916.569.2352 | MIKE.SMITH@NMRK.COM | CA RE LICENSE #01504428
COLE CUMMINGS ASSOCIATE | 916.569.2366 | COLE.CUMMINGS@NMRK.COM | CA RE LICENSE #02106833
IRINA SHPYRKA ASSOCIATE | 916.569.2360 | IRINA.SHPYRKA@NMRK.COM | CA RE LICENSE #02037207

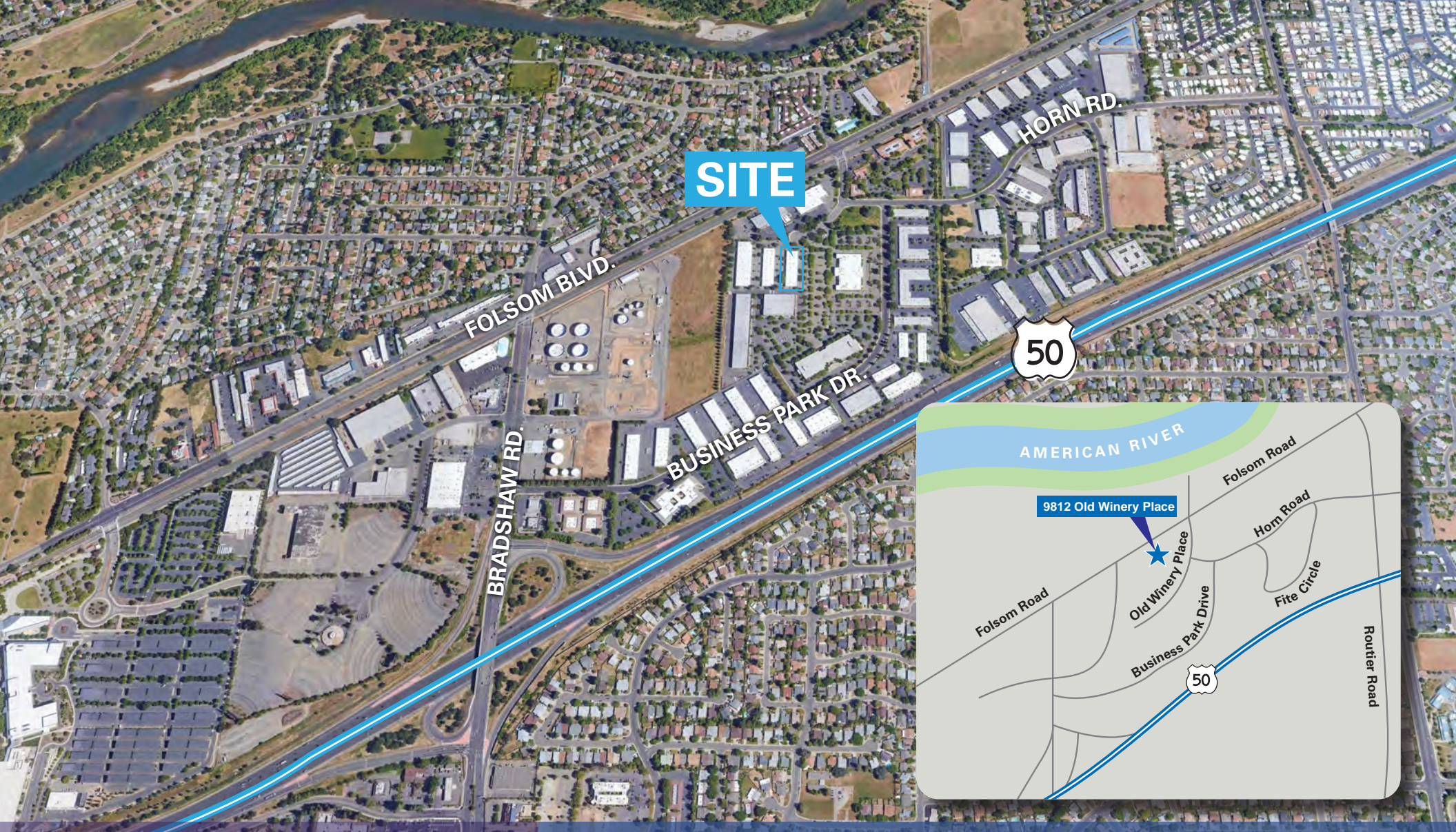
SITEPLAN



Availability

Suite	SF	Office	Warehouse
9812 Suite #8/10	±6,120 SF	±3,480 SF	±2,640 SF

MIKE SMITH DIRECTOR | 916.569.2352 | MIKE.SMITH@NMRK.COM | CA RE LICENSE #01504428
COLE CUMMINGS ASSOCIATE | 916.569.2366 | COLE.CUMMINGS@NMRK.COM | CA RE LICENSE #02106833
IRINA SHPYRKA ASSOCIATE | 916.569.2360 | IRINA.SHPYRKA@NMRK.COM | CA RE LICENSE #02037207



SITE

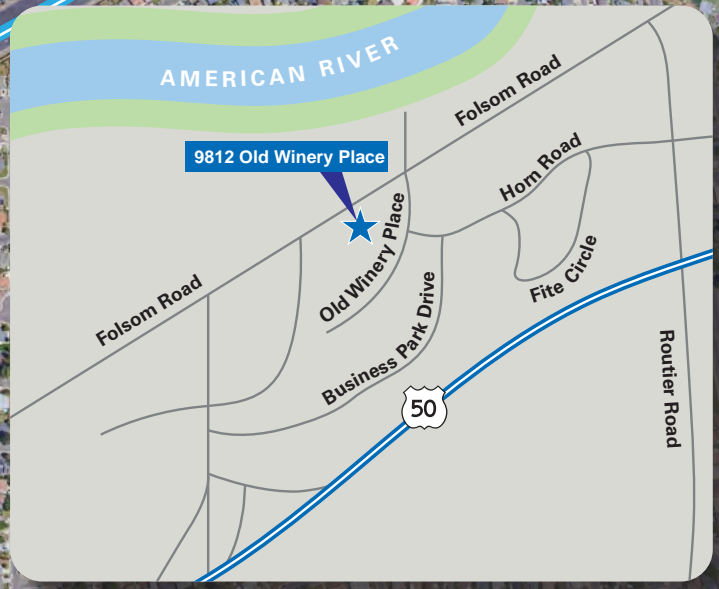
FOLSOM BLVD.

HORN RD.

50

BUSINESS PARK DR.

BRADSHAW RD.



9812 Old Winery Place

Old Winery Place

Folsom Road

Horn Road

Fite Circle

Business Park Drive

Router Road

50

980 9TH STREET, SUITE 2500, SACRAMENTO, CA 95814 T. 916.569.2352

THE INFORMATION CONTAINED HEREIN HAS BEEN OBTAINED FROM SOURCES DEEMED RELIABLE BUT HAS NOT BEEN VERIFIED AND NO GUARANTEE, WARRANTY OR REPRESENTATION, EITHER EXPRESS OR IMPLIED, IS MADE WITH RESPECT TO SUCH INFORMATION. TERMS OF SALE OR LEASE AND AVAILABILITY ARE SUBJECT TO CHANGE OR WITHDRAWAL WITHOUT NOTICE. 10/24

NEWMARK

MIKE SMITH DIRECTOR | 916.569.2352 | MIKE.SMITH@NMRK.COM | CA RE LICENSE #01504428
COLE CUMMINGS ASSOCIATE | 916.569.2366 | COLE.CUMMINGS@NMRK.COM | CA RE LICENSE #02106833
IRINA SHPYRKA ASSOCIATE | 916.569.2360 | IRINA.SHPYRKA@NMRK.COM | CA RE LICENSE #02037207