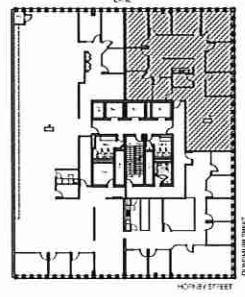
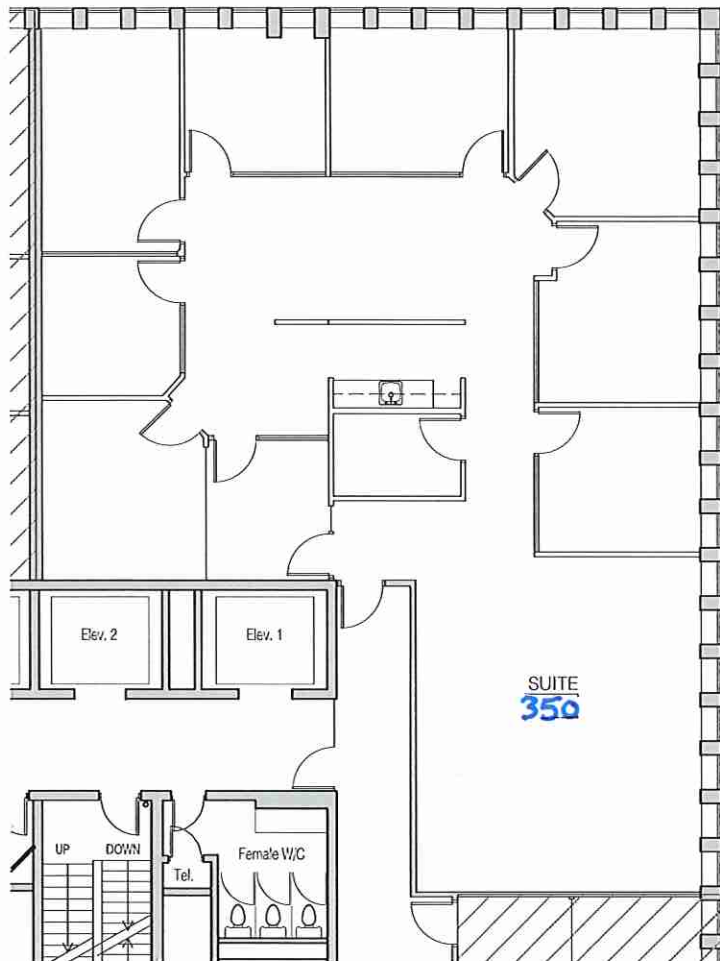


SUITE 350  
 APPROX. 3,638  
 RENTABLE SQ. FT.



SITE PLAN  
 SCALE: NOT TO SCALE

885  
 DUNSMUIR ST.  
 SUITE 320  
 885 DUNSMUIR STREET  
 VANCOUVER, BC

March 03, 2021  
 SCALE: NOT TO SCALE

EXISTING FLOOR PLAN

MANAGED BY:  
 WEST PENDER  
 PROPERTY GROUP  
 230 - 830 West Pender Street  
 Vancouver, BC