

5471 WISCONSIN
at the
collection

2ND FLOOR
SPACE
IMMEDIATELY AVAILABLE

the collection



WWW.5425WISCONSIN.COM

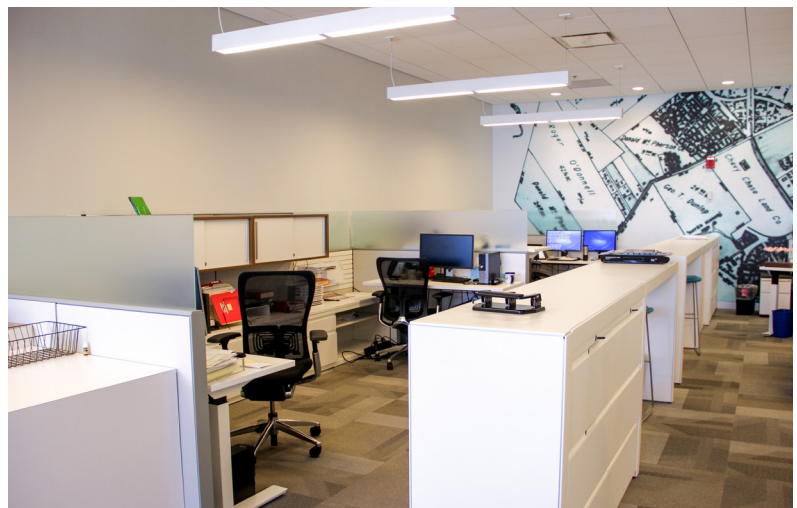
5471 WISCONSIN
at the
collection



GET TO KNOW OUR BUILDING

TROPHY CLASS FINISHES & SERVICES INCLUDING:

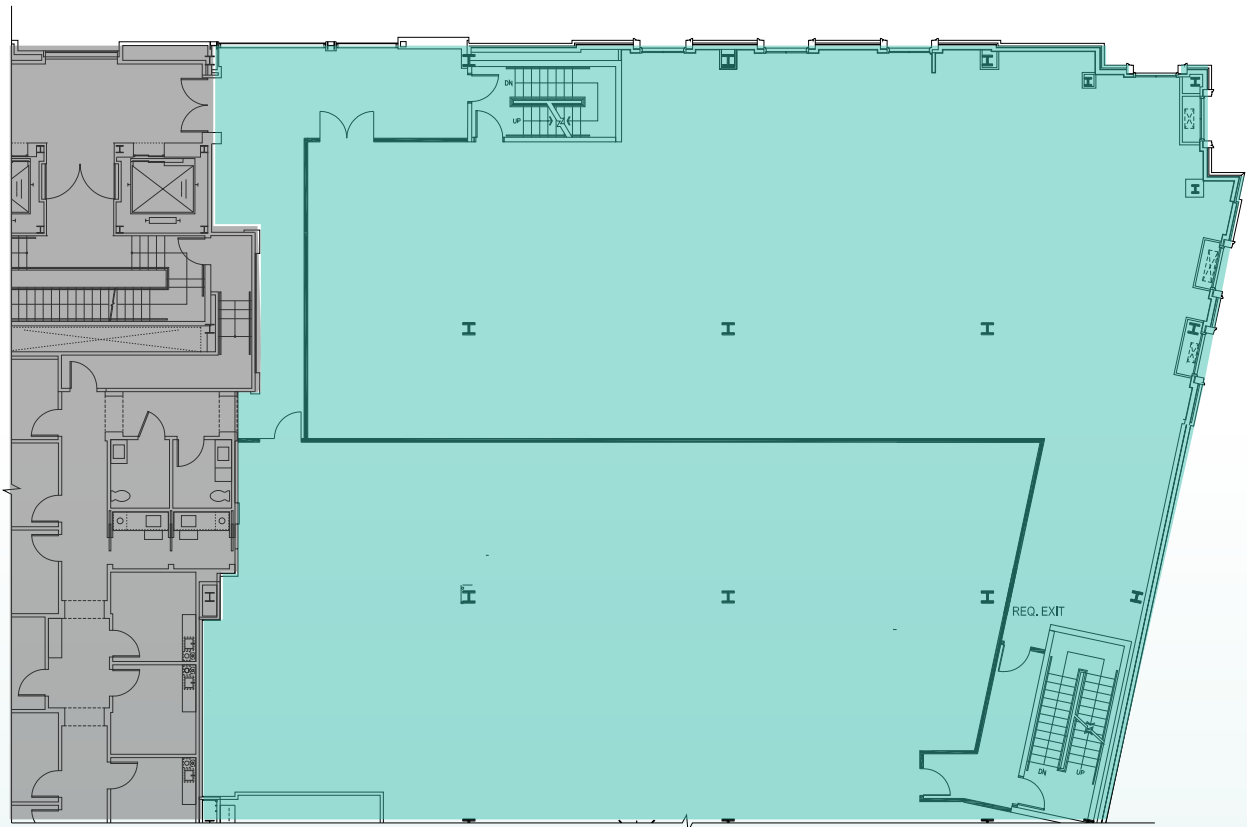
- Covered and surface parking available at 2:1,000 sf
- Adjacent to the Friendship Heights Metro
- In the heart of The Collection at Chevy Chase - steps from dozens of shops and restaurants
- Conveniently located at the intersection of Western & Wisconsin Ave
- Everything you need on-site: Amazon Fresh, Westwood Cleaners, Hunter's Hound, Capital One & more.



5471 WISCONSIN
at the
collection

2ND FLOOR
OFFICE/MEDICAL/
QUASI RETAIL SPACE
IMMEDIATELY AVAILABLE

APPROXIMATELY
5,000-12,000 SF



5471 WISCONSIN

at the
collection



18+

DINING OPTIONS
WITHIN .25 MILES

25+

RETAIL OPTIONS
WITHIN .25 MILES

EASILY ACCESSIBLE

BY ALL MAJOR MODES OF TRANSIT



BIKE



BUS



CAR



METRO



GET TO KNOW THE NEW CENTER OF CHEVY CHASE

Recently, The Chevy Chase Land Company completed the redevelopment of The Collection, a welcoming, walkable retail shopping center known for dining, shopping and gathering. The Collection offers the community a refreshing retail experience with a mix of much-loved merchants, restaurants, community events and inviting green space.

WWW.5425WISCONSIN.COM