

Colliers

Accelerating success.

View online at colliers.com/philadelphia

Corner retail in prime Center City location for lease

At 1737 Chestnut Street, experience
unsurpassed exposure with 1,950 SF ground-
level retail and a 1,453 SF lower level.

1737 Chestnut Street, Philadelphia, PA

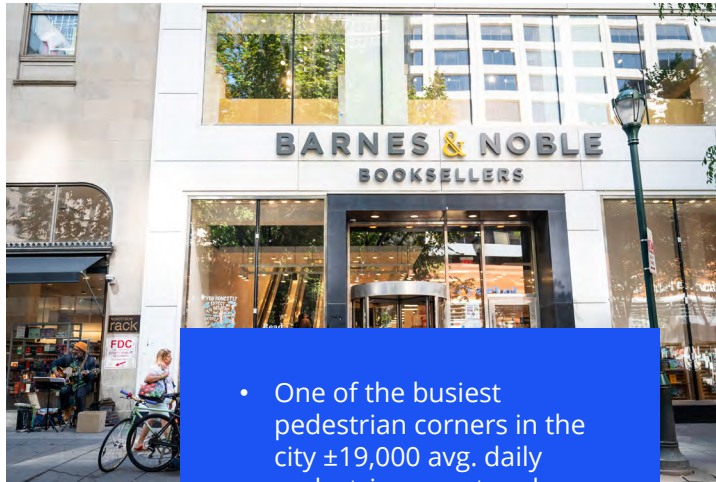
CONTACT

Larry Steinberg
Senior Managing Director
+1 215 928 7593
larry.steinberg@colliers.com

Sophia Ferguson
Associate
+1 610 304 9733
sophia.ferguson@colliers.com

Colliers Greater
Philadelphia Region
2005 Market Street,
Suite 4010
Philadelphia, PA 19103
+1 215 925 4600





Be at one of the most pivotal retail corners in the city

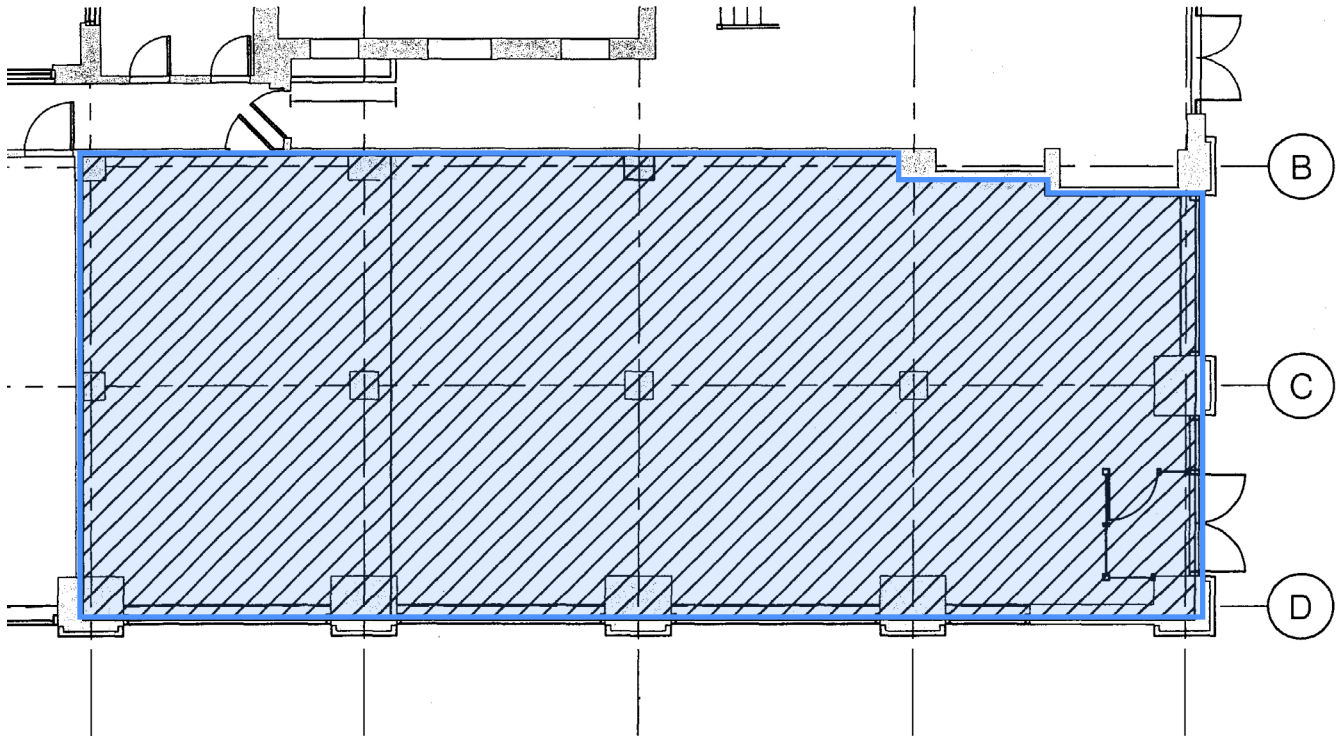
Ideally situated between Rittenhouse Square and Philadelphia's Central Business District, 1737 Chestnut offers excellent exposure at 18th & Chestnut Streets and sitting below 22 residential units.

This property is ready for full occupancy on the ground floor and lower level. Don't miss this opportunity for unmatched Center City exposure!

- One of the busiest pedestrian corners in the city ±19,000 avg. daily pedestrian count and 1.9M visitors at 1800 Chestnut between '24-25*
- Surrounded by dense, affluent residential population
- Join block with Nordstrom Rack, MAC, DiBruno Bros, Barnes & Noble, Sephora, and more
- CMX-5 zoning allows for a variety of retail, office, and restaurant uses

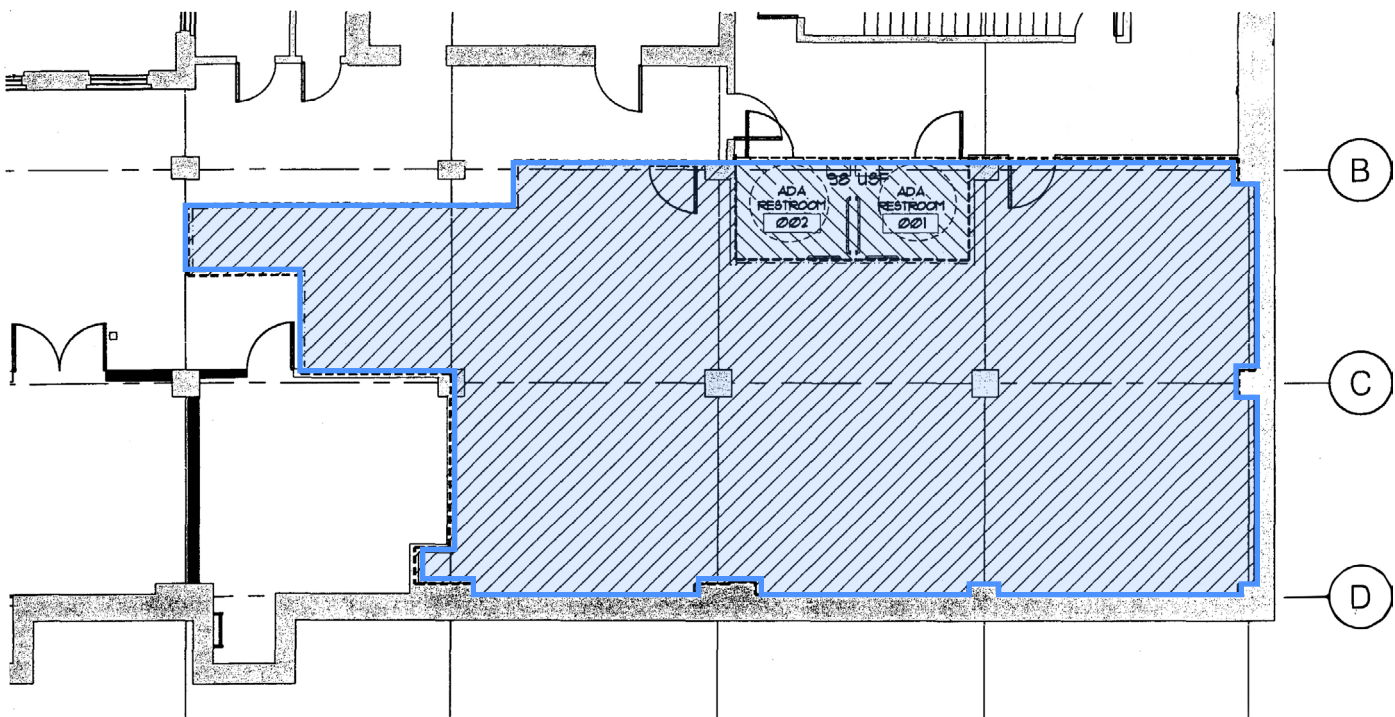
*Source: Placer.ai

Ground level retail 1,950 SF



- Former Metro by T-Mobile
- Floor to ceiling windows

Lower level 1,453 SF



Notable Neighbors



HEYDAY

Catbird

the Continental Mid-town



Allen Edmonds

AN AMERICAN ORIGINAL

MAC



19th Street



Luxury 2 Bedroom
by Rittenhouse

BOYDS



CVS
Je Suis Jolie
Boyds
Playa Bowls
&pizza

The Bank of Princeton
Crazy Sushi
Mandarin Palace
Sweetgreen

Taylor Chip, Cookies
Blue Sole Shoes
The Continental



ROOST
Rittenhouse

TAYLOR CHiP

swætgreen®

18th Street

BARNES & NOBLE

NORDSTROM
rack

Allen Edmonds
MAC
DiBruno Bros
Benjamin Lovell Shoes
Sura
Mattress Firm
Jacobs
Gran Caffè L'Aquila
Sephora
Barnes & Noble
Nordstrom Rack

Heyday
Sugared + Bronzed
Dave's Hot Chicken
Just Salad
The Shade Store
Kura Sushi
Grace Loves Lace
Paris Baguette
Asian Food Hall
Cava
For Eyes
Sunglass Hut
The Vitamin Shoppe

1737 Chestnut St.

CAVA

SUGARED + BRONZED



17th Street



Club Quarters

Men's Warehouse
Old Navy
DIG
Taco Bell
Uniqlo
2nd Street
Wonder



OLD NAVY

Wonder

Chestnut Street

Loft Outlet
Bloomingdale's Outlet
Puttshack
Kiehl's

J.CREW

Puttshack

bloomingdale's

16th Street



PORTABELLA

JD Sports
Portabella
Empire Beauty School
Buffalo Exchange
Amma's
Popeyes
Samsun Footwear
Suit Up!
Staples

STAPLES

J. Crew Factory
Giovanni's Bar & Grill
Five Below
Five Guys
Footlocker
Wendy's
Dunkin'
Wells Fargo

five BELOW

Wendy's

Foot Locker

15th Street



ROOST
Midtown

Del Frisco's
DTLR
Philadelphia Film Society



W Hotel



Ritz Carlton



DTLR

Aquimero

Broad Street



Colliers

Accelerating success.



For leasing inquiries, please contact:

Larry Steinberg
Senior Managing Director
+1 215 928 7593
larry.steinberg@colliers.com

Sophia Ferguson
Associate
+1 610 304 9733
sophia.ferguson@colliers.com

Colliers Greater Philadelphia Region
2005 Market Street, Suite 4010
Philadelphia, PA 19103
+1 215 925 4600

This document/email has been prepared by Colliers for advertising and general information only. Colliers makes no guarantees, representations or warranties of any kind, expressed or implied, regarding the information including, but not limited to, warranties of content, accuracy and reliability. Any interested party should undertake their own inquiries as to the accuracy of the information. Colliers excludes unequivocally all inferred or implied terms, conditions and warranties arising out of this document and excludes all liability for loss and damages arising there from. This publication is the copyrighted property of Colliers and /or its licensor(s). © 2025. All rights reserved. This communication is not intended to cause or induce breach of an existing listing agreement. Greater Philadelphia Region.

colliers.com