

# silicon valley center

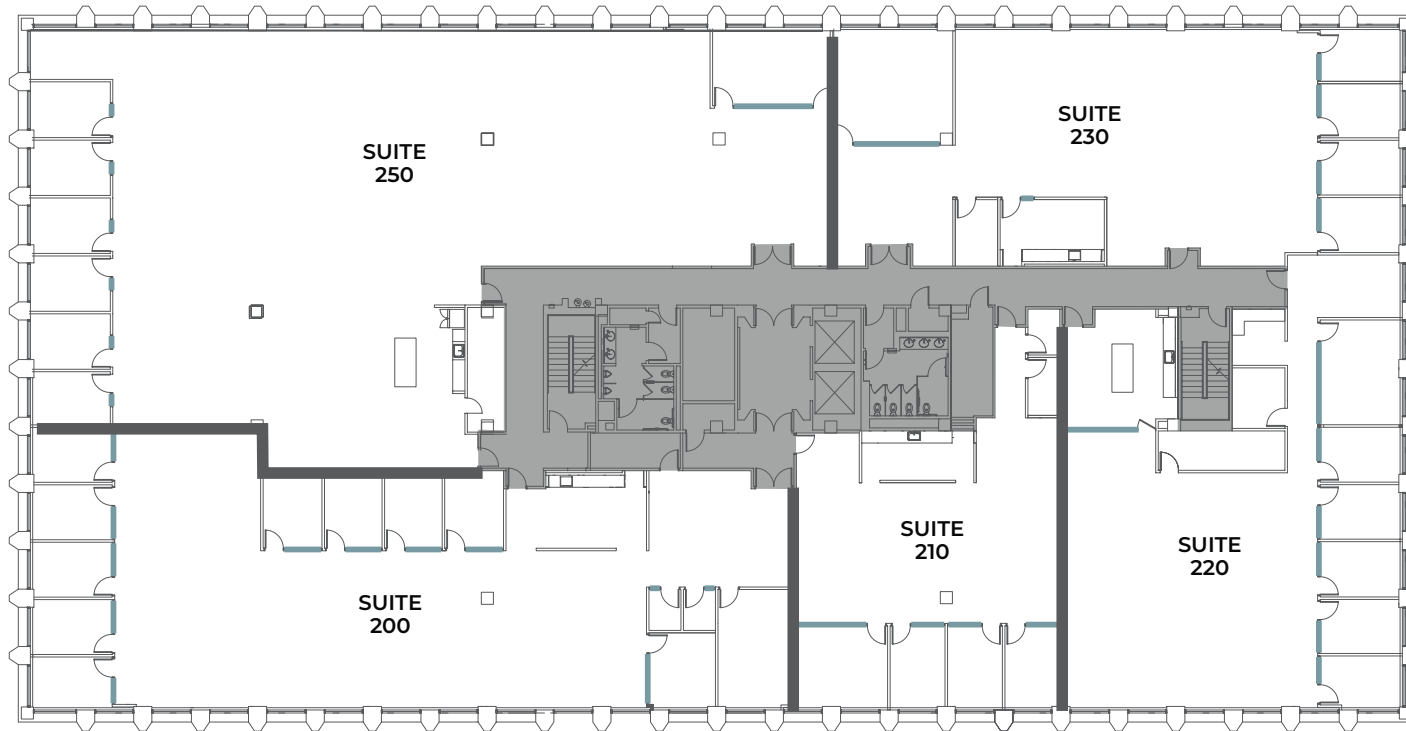
2590 n. first street | 2nd floor

**Flex+**<sup>®</sup>  
BY IRVINE COMPANY



artist rendering

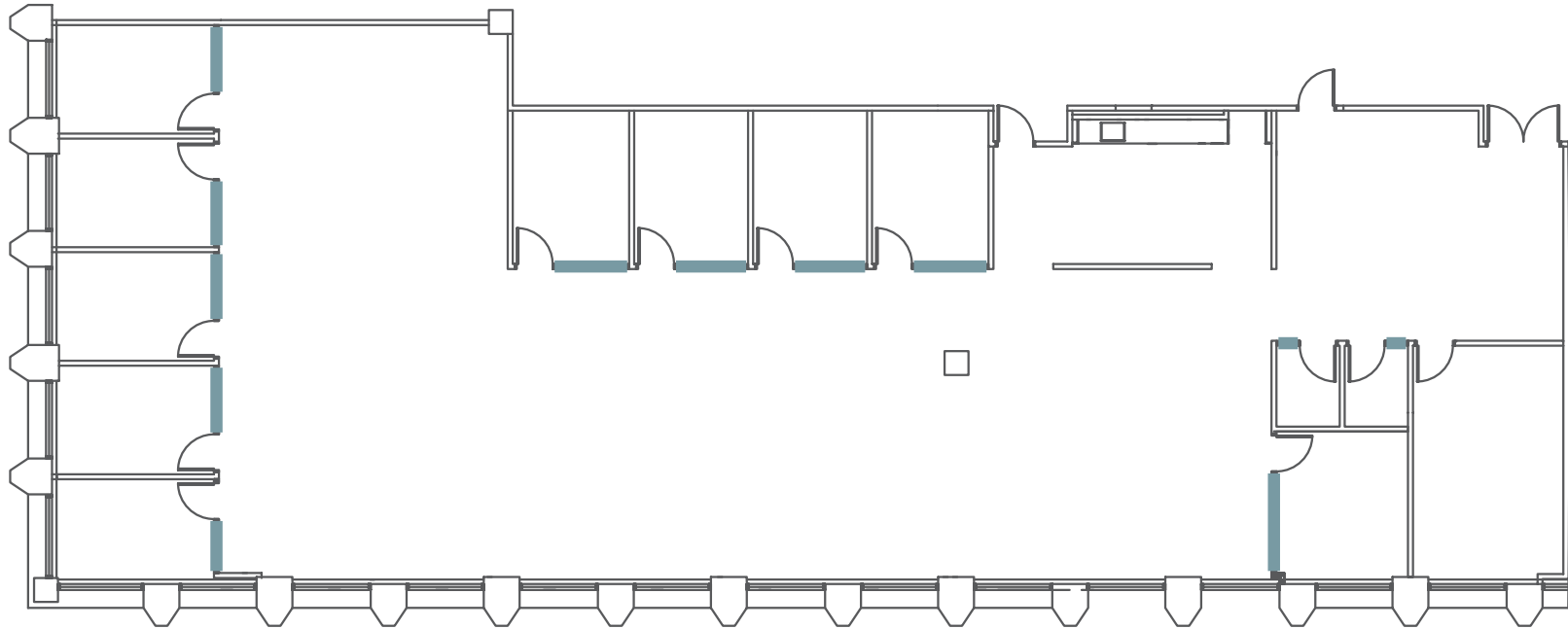
# 2590 n. first street | 2nd floor



- + 4 new, premium move-in ready suites range from 2.6K - 6.6K SF (Available Summer 2026)
- + High-end suite designs feature a variety of modern lighting, premium break areas and exposed ceilings
- + Convenient access to outdoor workspaces, Kinetic Fitness, casual dining options, The Lounge and Venue Meetings & Events

# 2590 n. first street | suite 200

Total Size	Team Size	Private Offices	Meeting Rooms
<b>±6,613 sqft</b>	<b>29</b>	<b>9</b>	<b>3</b>



# 2590 n. first street | **suite 200**



reception

artist rendering

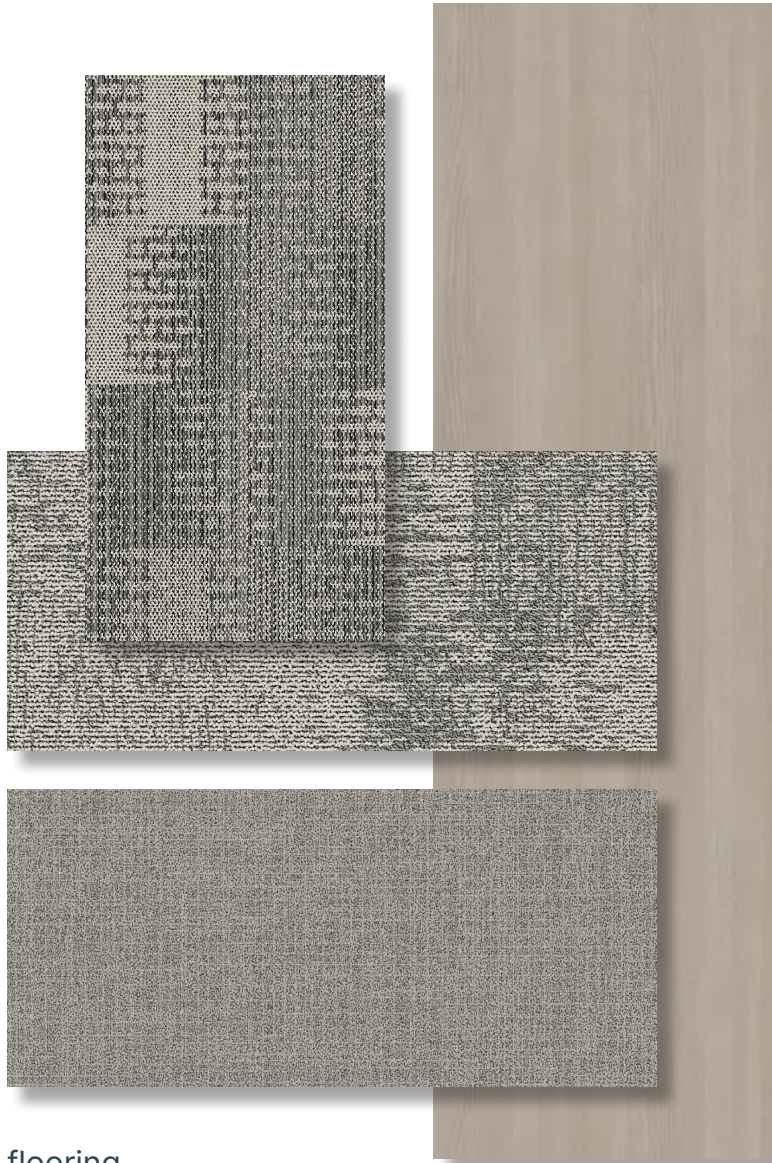
2590 n. first street | **suite 200**



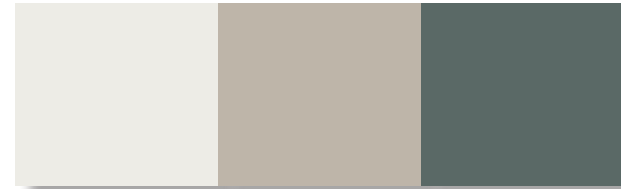
breakroom

artist rendering

# 2590 n. first street | suite 200



flooring



paint scheme



breakroom

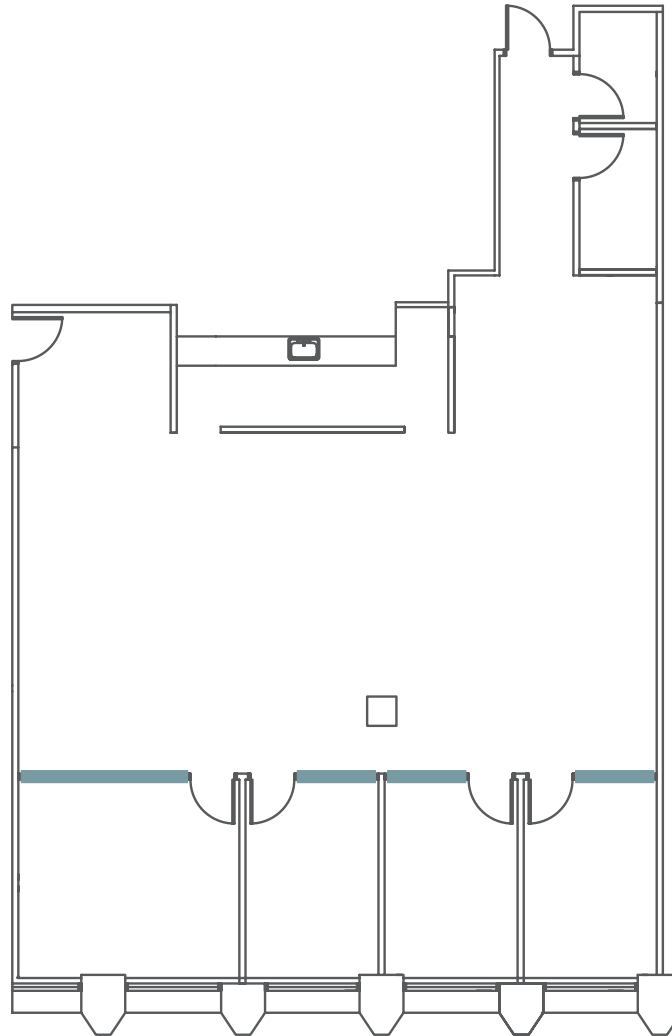
# 2590 n. first street | suite 210

Total  
Size  
**±2,675 sqft**

Team  
Size  
**12**

Private  
Offices  
**3**

Meeting  
Room  
**1**



# 2590 n. first street | **suite 210**



workspace

artist rendering

2590 n. first street | **suite 210**



breakroom

artist rendering

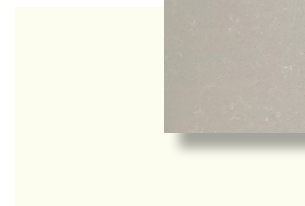
# 2590 n. first street | suite 210



flooring



paint scheme



breakroom



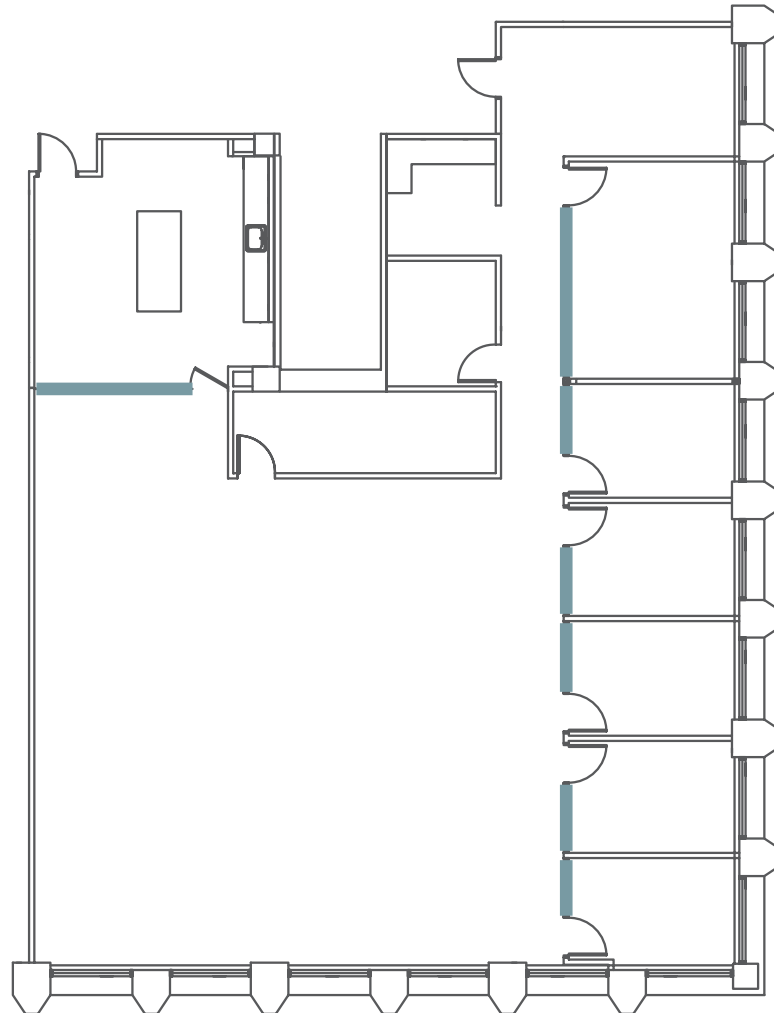
# 2590 n. first street | suite 220

Total  
Size  
**±4,577 sqft**

Team  
Size  
**20**

Private  
Offices  
**5**

Meeting  
Room  
**1**



# 2590 n. first street | **suite 220**



workspace

artist rendering

# 2590 n. first street | **suite 220**



meeting room

artist rendering

# 2590 n. first street | **suite 220**



breakroom

artist rendering

# 2590 n. first street | suite 220



flooring



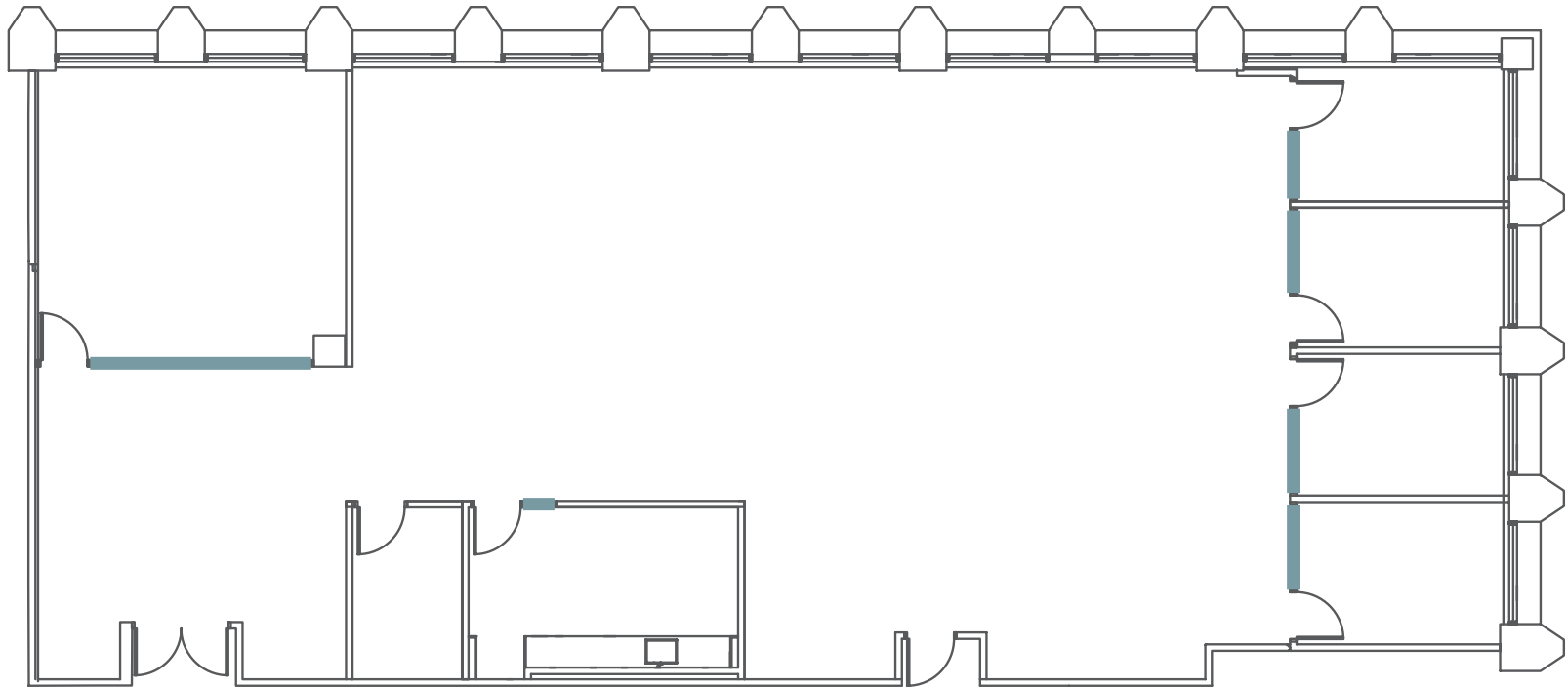
paint scheme



breakroom

# 2590 n. first street | suite 230

Total Size	Team Size	Private Offices	Meeting Room
<b>±4,406 sqft</b>	<b>20</b>	<b>4</b>	<b>1</b>



# 2590 n. first street | **suite 230**



workspace

artist rendering

2590 n. first street | **suite 230**



meeting room

artist rendering

# 2590 n. first street | suite 230



breakroom

artist rendering

# 2590 n. first street | suite 230



flooring

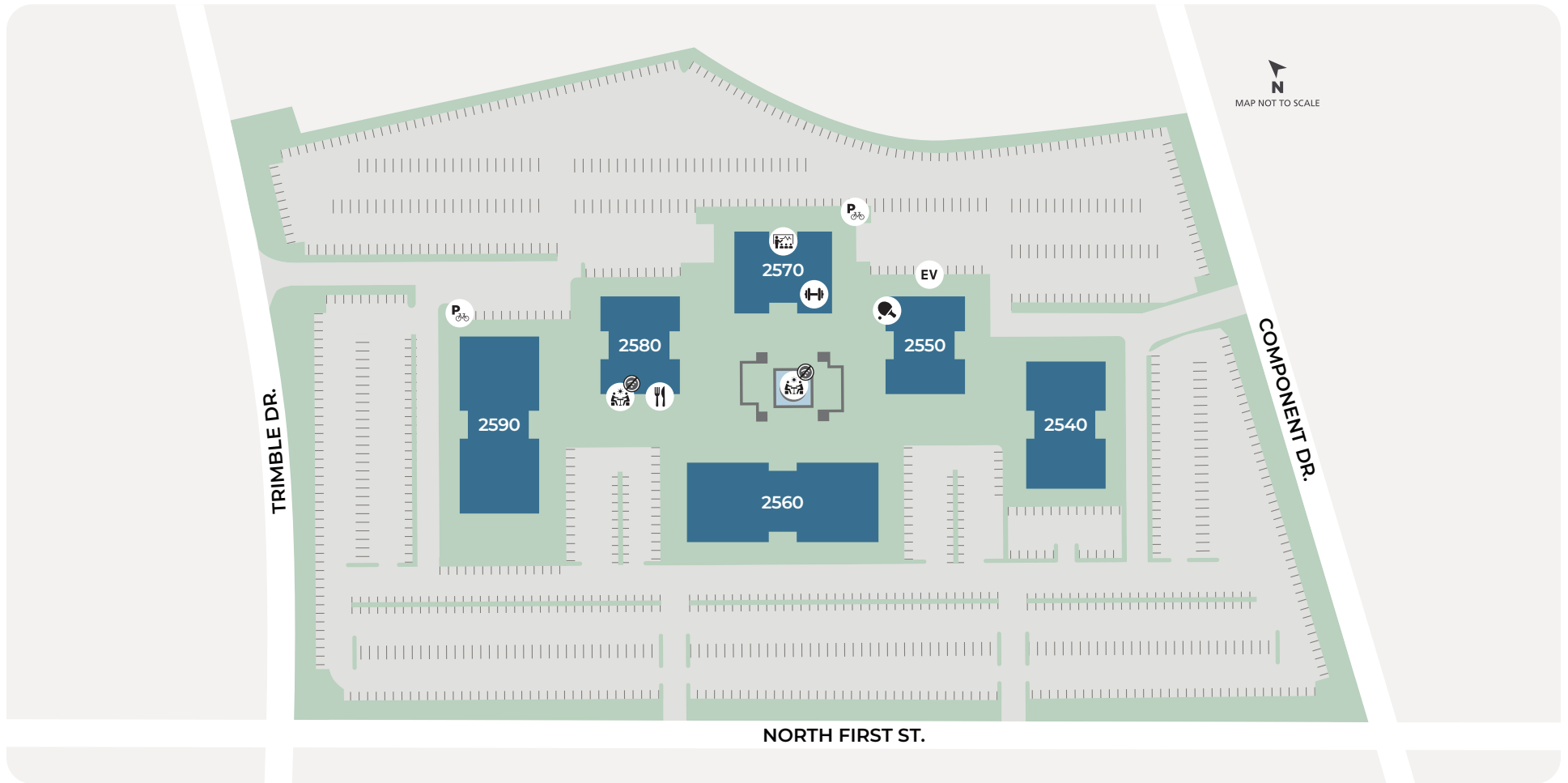


paint scheme



breakroom

# silicon valley center



  
BIKE  
PARKING

  
CAFE/  
RESTAURANT

  
CONFERENCE  
CENTER

  
EV  
CHARGING

  
FITNESS

  
LOUNGE

  
OUTDOOR  
WORKSPACE



outdoor workspace

[flexplus.com](https://flexplus.com) | 408.330.0100

All properties for lease by Irvine Management Company, a licensed real estate broker, DRE LIC. #02041810. Product and amenities are subject to availability. Images may not be to scale. Not all features available in all communities. Not a representation or warranty. Flex+ is a registered trademark of Irvine Management Company. ©2025 Irvine Management Company. All Rights Reserved. The Sunwave, Irvine Company, and Success Works Here are registered trademarks of Irvine Management Company.

**Flex+**<sup>®</sup>  
BY IRVINE COMPANY