

# GEORGE MASON SQUARE

101, 103 & 105 W Broad St  
Falls Church, VA 22046

Office For Lease

848 - 5,180 SF



Leasing Information:  
703.522.4600

# Lincoln

<b>Chris Dyson</b> 703.284.3633 cdyson@lpc.com	<b>Stoddie Nibley</b> 703.284.5884 snibley@lpc.com	<b>Jack Redmond</b> 703.284.5880 jredmond@lpc.com	<b>Eamon McCrann</b> 703.284.5861 emccrann@lpc.com
--	--	---	--

1530 Wilson Boulevard  
Suite 200  
Arlington, VA 22209

[www.lpc.com](http://www.lpc.com)

# GEORGE MASON SQUARE

101, 103 & 105 W Broad St | Falls Church, VA 22046

Office For Lease

848 - 5,180 SF



## Property Highlights

- Ideal location in the heart of Falls Church for both office and medical tenants
- 3-building campus with private courtyard
- Brand new Whole Foods caddy-corner to the project
- 3/1,000 SF in both covered and surface lots
- Small suites to full floors provide flexible size ranges for prospects
- Four Provinces located on-site with multitude of available amenities within the Little City

## Availabilities

			Date Available
101 W Broad St - Suite 100	2,440 SF		Immediately
101 W Broad St - Spec Suite 201	1,106 SF		Immediately
101 W Broad St - Spec Suite 202	2,052 SF		Immediately
103 W Broad St - Suite 100	2,858 SF		Immediately
103 W Broad St - Suite 320	848 - 1,844 SF		Immediately
103 W Broad St - Suite 340	996 - 1,844 SF		Immediately
103 W Broad St - Suite 400	5,180 SF		January 2026
103 W Broad St - 5th Floor	5,180 SF		Immediately

**Chris Dyson**

703.284.3633  
cdyson@lpc.com

**Stoddie Nibley**

703.284.5884  
snibley@lpc.com

**Jack Redmond**

703.284.5880  
jredmond@lpc.com

**Eamon McCrann**

703.284.5861  
emccrann@lpc.com

**Lincoln**

# GEORGE MASON SQUARE

101, 103 & 105 W Broad St | Falls Church, VA 22046

## Property Amenities



**Chris Dyson**

703.284.3633  
cdyson@lpc.com

**Stoddie Nibley**

703.284.5884  
snibley@lpc.com

**Jack Redmond**

703.284.5880  
jredmond@lpc.com

**Eamon McCrann**

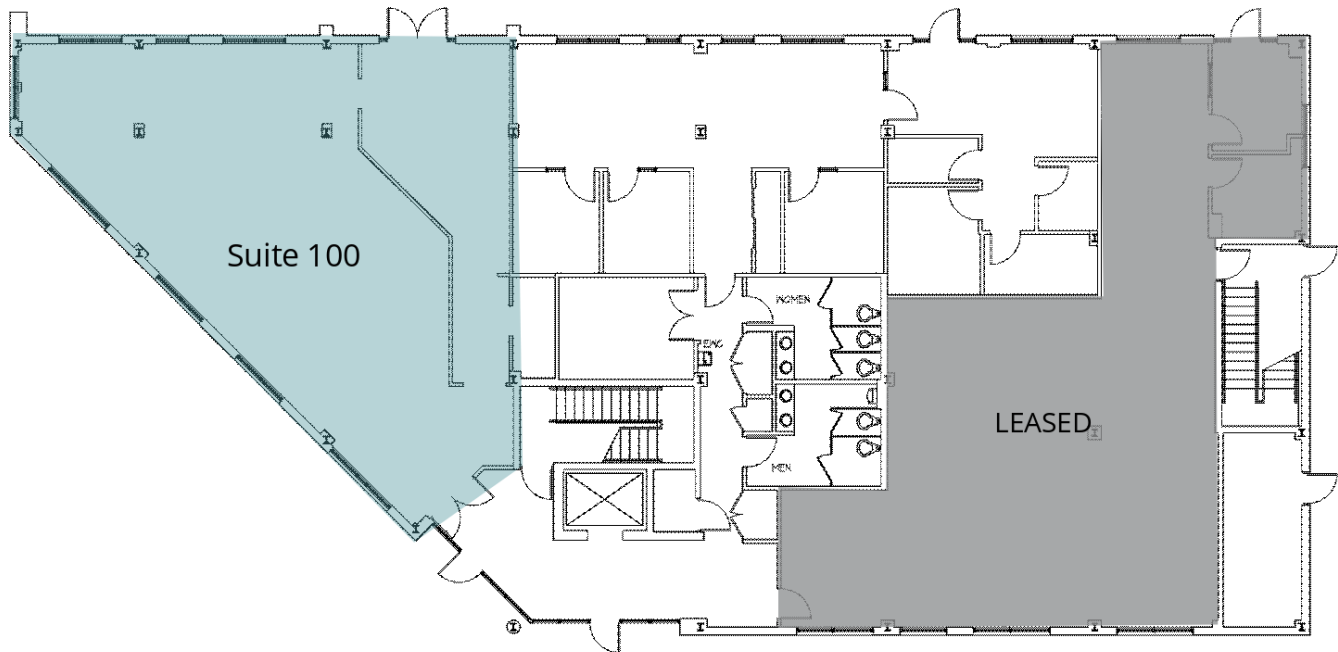
703.284.5861  
emccrann@lpc.com

# Lincoln

# GEORGE MASON SQUARE

101 W Broad St - Suite 100 and 120

101, 103 & 105 W Broad St | Falls Church, VA 22046



Suite	Size	Description
■ 101 W Broad St - Suite 100	2,440 SF	Available immediately

**Chris Dyson**

703.284.3633  
cdyson@lpc.com

**Stoddie Nibley**

703.284.5884  
snibley@lpc.com

**Jack Redmond**

703.284.5880  
jredmond@lpc.com

**Eamon McCrann**

703.284.5861  
emccrann@lpc.com

**Lincoln**

# GEORGE MASON SQUARE

101, 103 & 105 W Broad St | Falls Church, VA 22046

101 W Broad St - Suite 201 and 202



Suite	Size	Description
■ 101 W Broad St - Spec Suite 201	1,106 SF	Available Immediately
■ 101 W Broad St - Spec Suite 202	2,052 SF	Available Immediately

<b>Chris Dyson</b> 703.284.3633 cdyson@lpc.com	<b>Stoddie Nibley</b> 703.284.5884 snibley@lpc.com	<b>Jack Redmond</b> 703.284.5880 jredmond@lpc.com	<b>Eamon McCrann</b> 703.284.5861 emccrann@lpc.com
--	--	---	--

**Lincoln**

# GEORGE MASON SQUARE

101, 103 & 105 W Broad St | Falls Church, VA 22046

103 W Broad St - Suite 100



Suite	Size	Description
■ 103 W Broad St - Suite 100	2,858 SF	Available Immediately

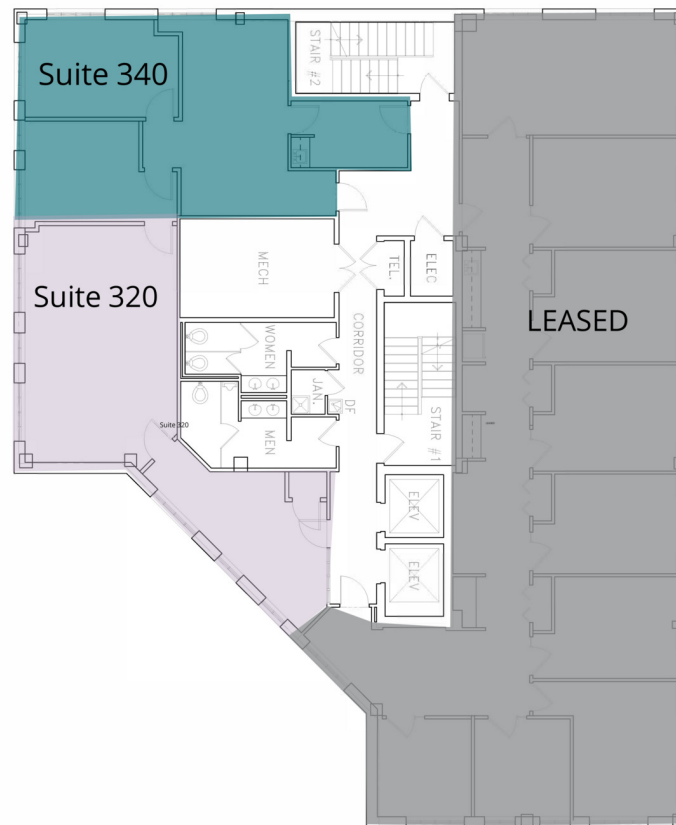
**Chris Dyson**    **Stoddie Nibley**    **Jack Redmond**    **Eamon McCrann**  
703.284.3633    703.284.5884    703.284.5880    703.284.5861  
cdyson@lpc.com    snibley@lpc.com    jredmond@lpc.com    emccrann@lpc.com

**Lincoln**

# GEORGE MASON SQUARE

103 W Broad St - Suite 320 and 340

101, 103 & 105 W Broad St | Falls Church, VA 22046



Suite	Size	Description
■ 103 W Broad St - Suite 320	848 - 1,844 SF	Available Immediately
■ 103 W Broad St - Suite 340	996 - 1,844 SF	Available Immediately




<b>Chris Dyson</b> 703.284.3633 cdyson@lpc.com	<b>Stoddie Nibley</b> 703.284.5884 snibley@lpc.com	<b>Jack Redmond</b> 703.284.5880 jredmond@lpc.com	<b>Eamon McCrann</b> 703.284.5861 emccrann@lpc.com
--	--	---	--

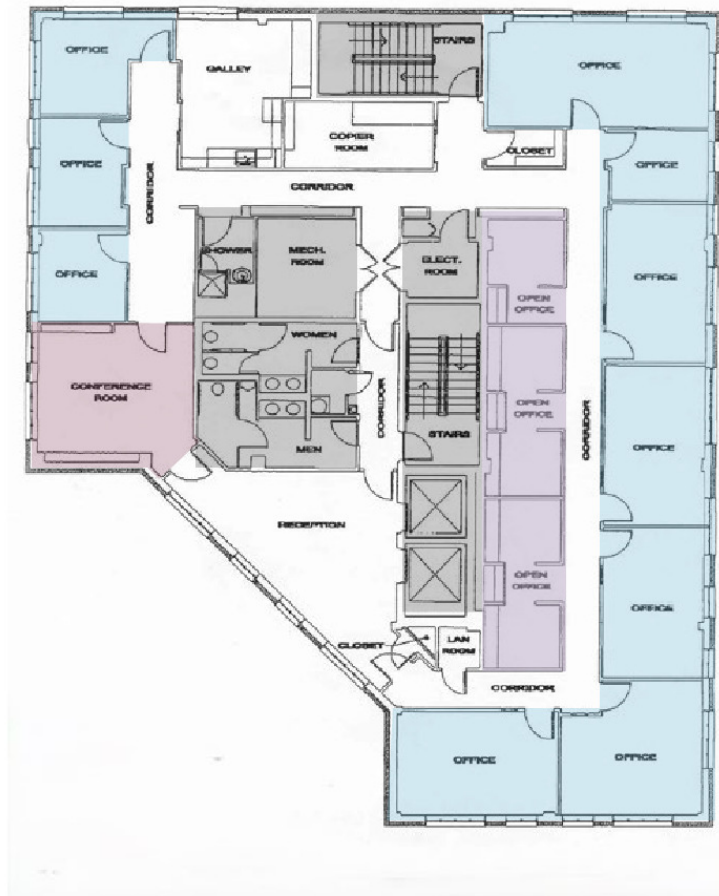
**Lincoln**

# GEORGE MASON SQUARE

103 W Broad St - Suite 400

101, 103 & 105 W Broad St | Falls Church, VA 22046

-  10 Offices
-  Open Work Areas
-  Conference/Training



Suite	Size	Description
103 W Broad St - Suite 400	5,180 SF	Full Floor Available January 2026

**Chris Dyson**    **Stoddie Nibley**    **Jack Redmond**    **Eamon McCrann**  
703.284.3633    703.284.5884    703.284.5880    703.284.5861  
cdyson@lpc.com    snibley@lpc.com    jredmond@lpc.com    emccrann@lpc.com

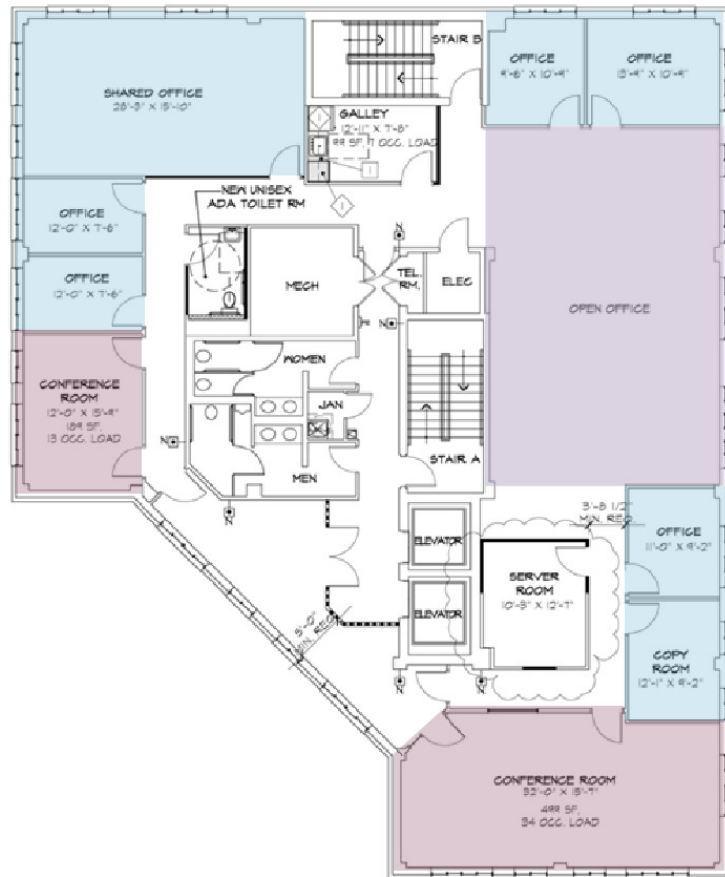
**Lincoln**

# GEORGE MASON SQUARE

101, 103 & 105 W Broad St | Falls Church, VA 22046

103 W Broad St - 5th Floor

- 7 Offices
- Open Work Area
- 2 Conference/Training



Suite	Size	Description
103 W Broad St - 5th Floor	5,180 SF	Available Immediately

<b>Chris Dyson</b> 703.284.3633 cdyson@lpc.com	<b>Stoddie Nibley</b> 703.284.5884 snibley@lpc.com	<b>Jack Redmond</b> 703.284.5880 jredmond@lpc.com	<b>Eamon McCrann</b> 703.284.5861 emccrann@lpc.com
--	--	---	--

**Lincoln**



# GEORGE MASON SQUARE

101, 103 & 105 W Broad St  
Falls Church, VA 22046

Leasing Information:  
703.522.4600

**Chris Dyson**  
703.284.3633  
cdyson@lpc.com

**Stoddie Nibley**  
703.284.5884  
snibley@lpc.com

**Jack Redmond**  
703.284.5880  
jredmond@lpc.com

**Eamon McCrann**  
703.284.5861  
emccrann@lpc.com

## Lincoln

1530 Wilson Boulevard  
Suite 200  
Arlington, VA 22209

[www.lpc.com](http://www.lpc.com)