

INDUSTRIAL SPACE IN ALACHUA COMMERCE CENTER FOR LEASE

11600 NW 173rd Street | Suite 100 & 110 | Gainesville, FL 32615

16,000± SF – 51,062± SF | \$8.00/SF NNN



Site 1: 16,000± SF
11600 NW 173rd St, Suite 110
Alachua, FL 32615

Site 2: 35,062± SF
11600 NW 173rd St, Suite 100
Alachua, FL 32615

*Tenant incentive package available to qualified tenants

DAN DROTOS, MSRE, SIOR, CCIM
President & Managing Principal
O 352.420.9889
C 954.551.9846
ddrotos@lee-associates.com

LAUREN VAZQUEZ, SIOR
Vice President
O 352.420.9889
C 352.222.4590
lvazquez@lee-associates.com

RORY CAUSEAUX, P.E.
Principal
O 352.420.9889
C 352.317.6341
rcauseaux@lee-associates.com

 **LEE & ASSOCIATES**
COMMERCIAL REAL ESTATE SERVICES

AERIAL VIEW

Alachua Commerce Center | 11600 NW 173rd Street | Gainesville, FL 32615

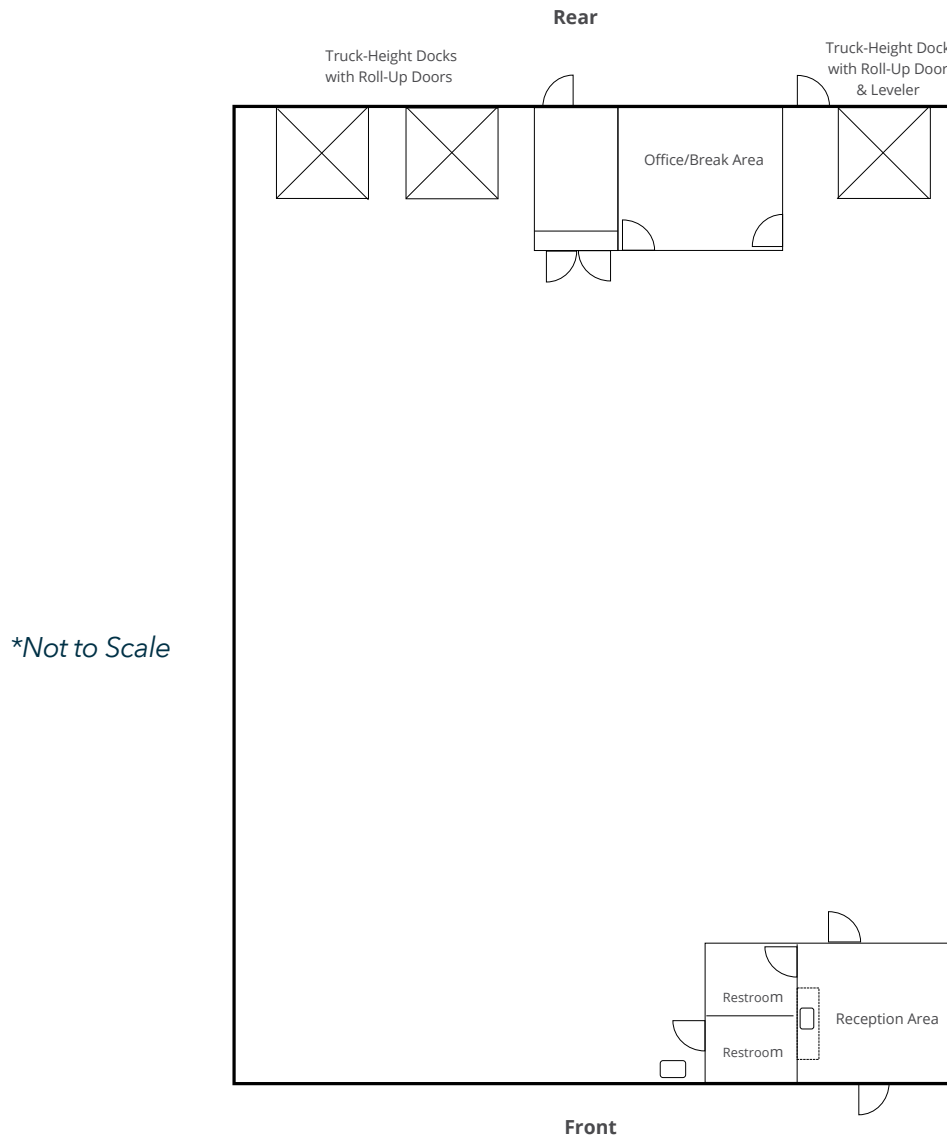


NW 115th Ave

NW 173rd St

SITE 1 | SUITE 110 | FLOOR PLAN

Alachua Commerce Center | 11600 NW 173rd Street | Gainesville, FL 32615



UTILITIES

- Electric: Clay
- Water and Wastewater: City of Alachua
- Internet: Cox

AVAILABLE: 16,000± SF

CLEAR HEIGHT: 24'

3 10'X10' DOCK HEIGHT DOORS
1 with leveler

SITE 1 | SUITE 110 | AERIAL VIEW

Alachua Commerce Center | 11600 NW 173rd Street | Gainesville, FL 32615



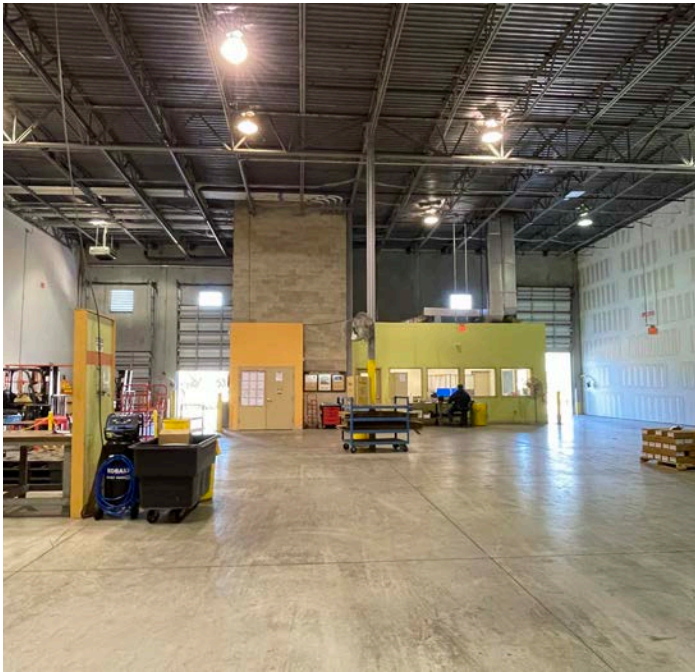
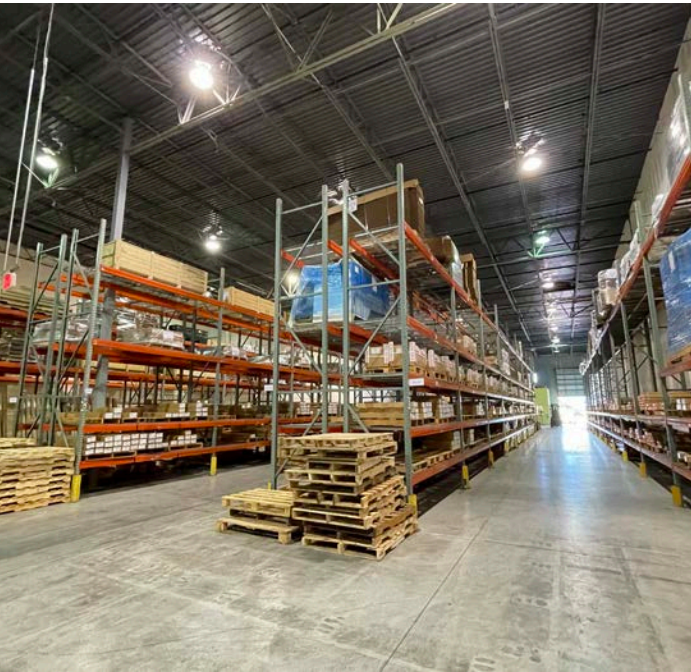
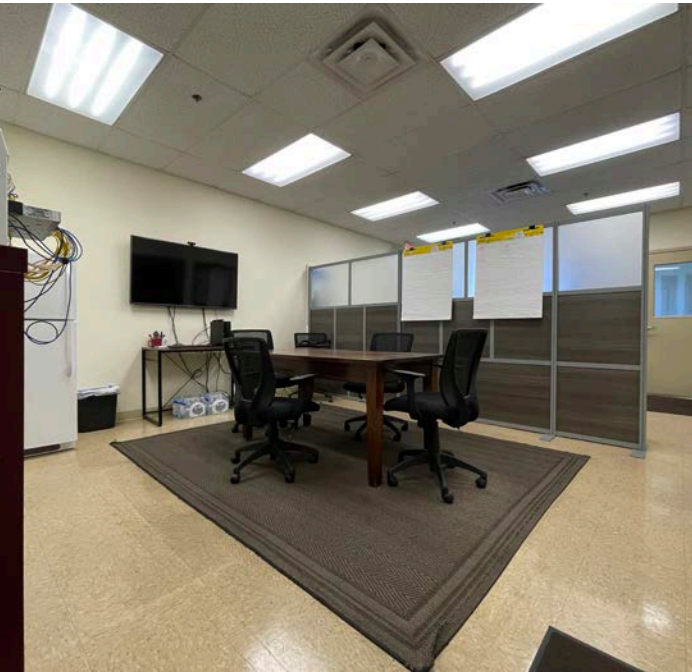
NW 115th Ave

Available

NW 173rd St

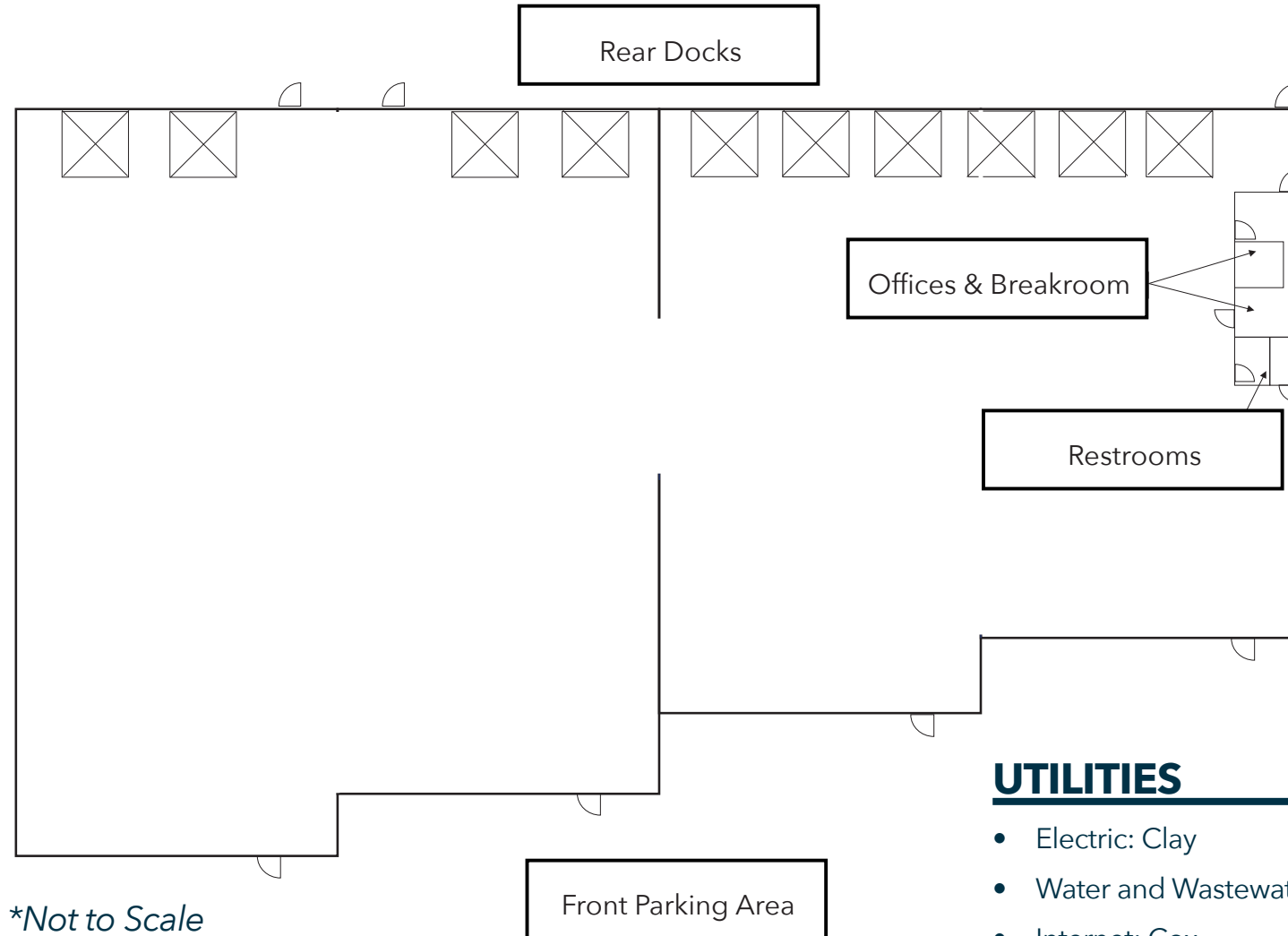
SITE 1 | SUITE 110 | PHOTO GALLERY

Alachua Commerce Center | 11600 NW 173rd Street | Gainesville, FL 32615



SITE 1 | SUITE 100 | FLOOR PLAN

Alachua Commerce Center | 11600 NW 173rd Street | Gainesville, FL 32615



UTILITIES

- Electric: Clay
- Water and Wastewater: City of Alachua
- Internet: Cox

AVAILABLE: 35,062± SF

CLEAR HEIGHT: 24'

10 10'X10' DOCK HEIGHT DOORS
2 with leveler | 1 ramp

SITE 1 | SUITE 100 | AERIAL VIEW

Alachua Commerce Center | 11600 NW 173rd Street | Gainesville, FL 32615



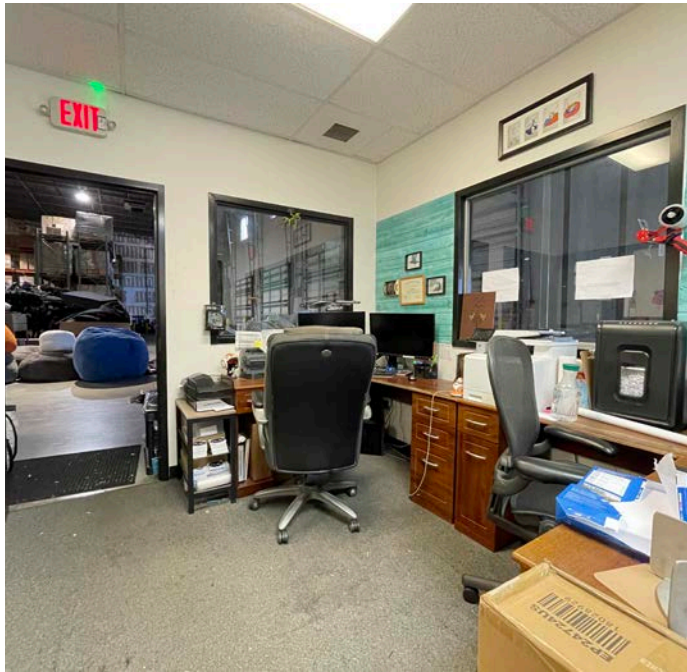
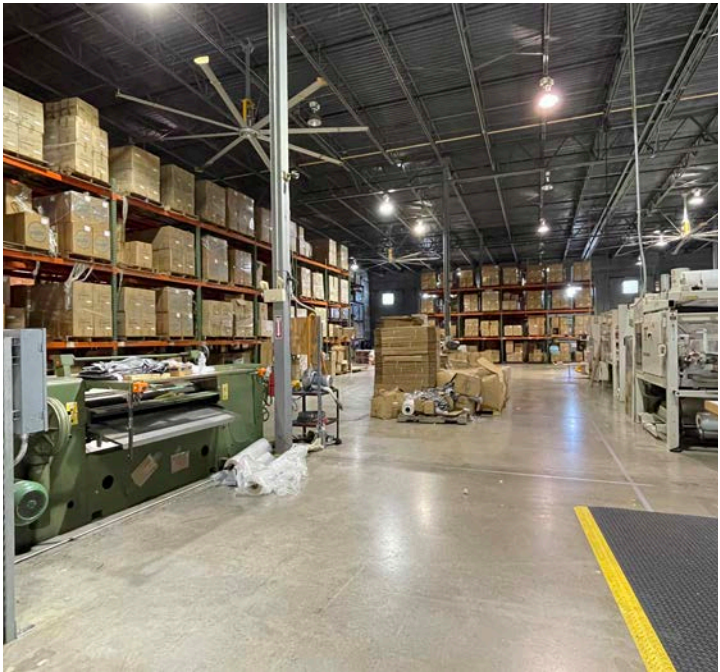
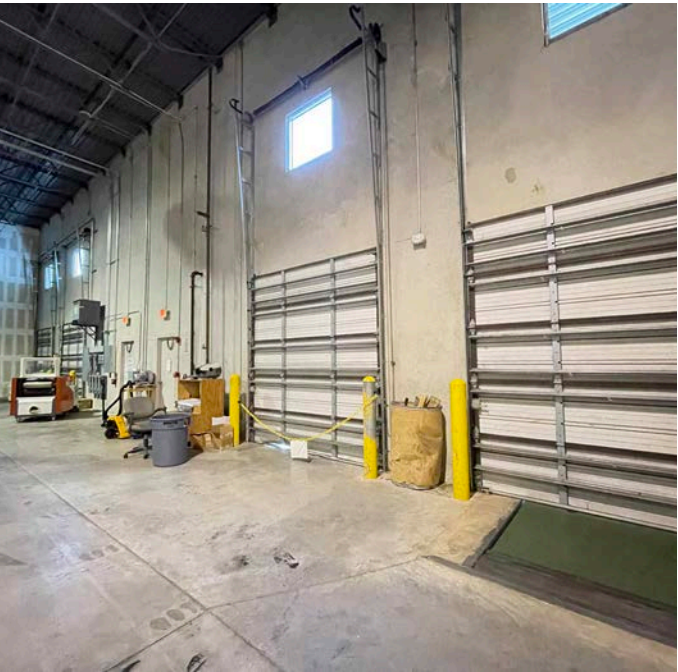
NW 115th Ave

Available

NW 173rd St

SITE 1 | SUITE 100 | PHOTO GALLERY

Alachua Commerce Center | 11600 NW 173rd Street | Gainesville, FL 32615



LOCATION

Alachua Commerce Center | 11600 NW 173rd Street | Gainesville, FL 32615



DOLLAR GENERAL

DOLLAR GENERAL
Distribution Center



SITE 1

SITE 2

ASSA ABLOY

NW 115th Ave

Walmart
Distribution Center



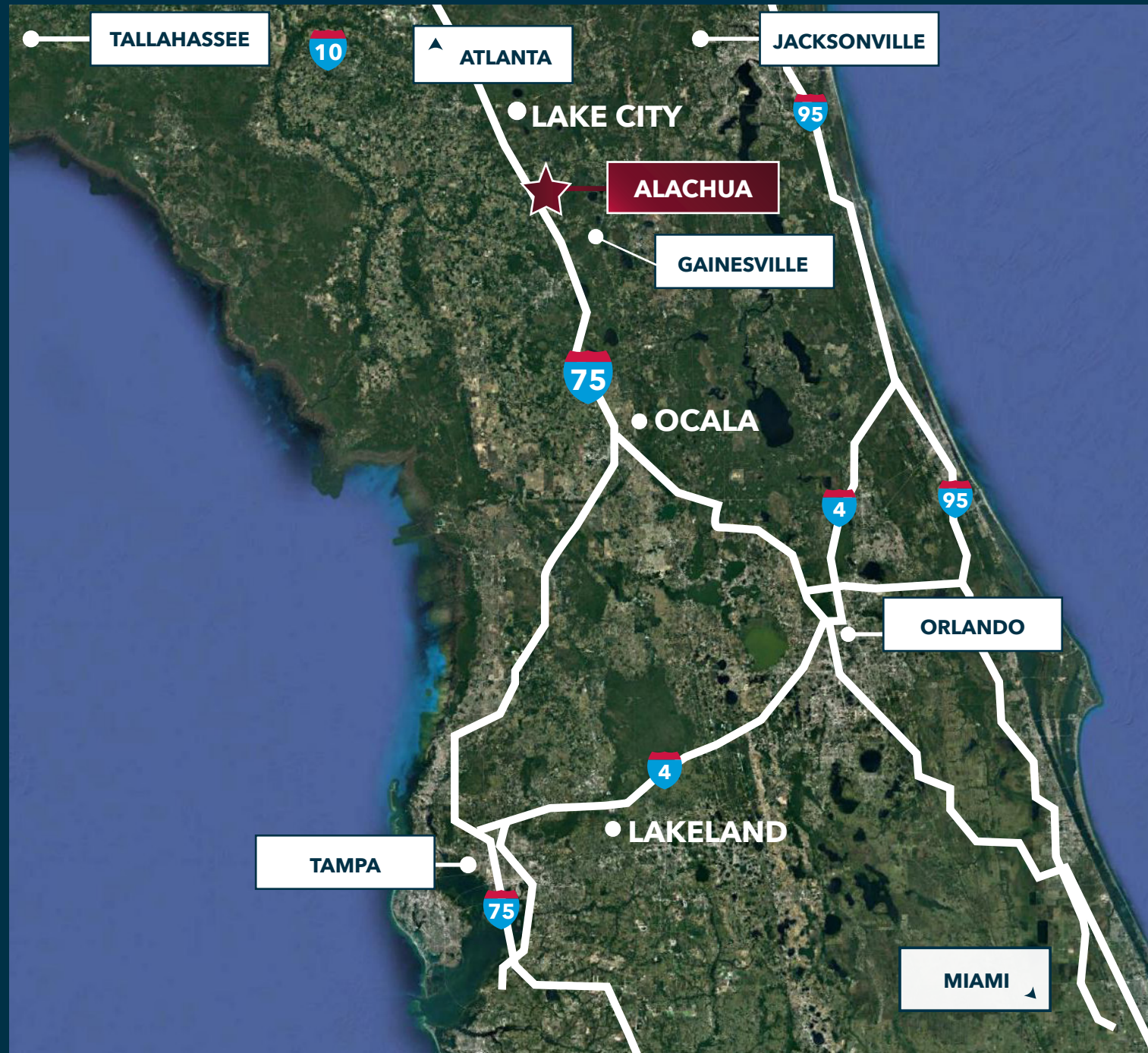
NW County Rd 235



LOCATION

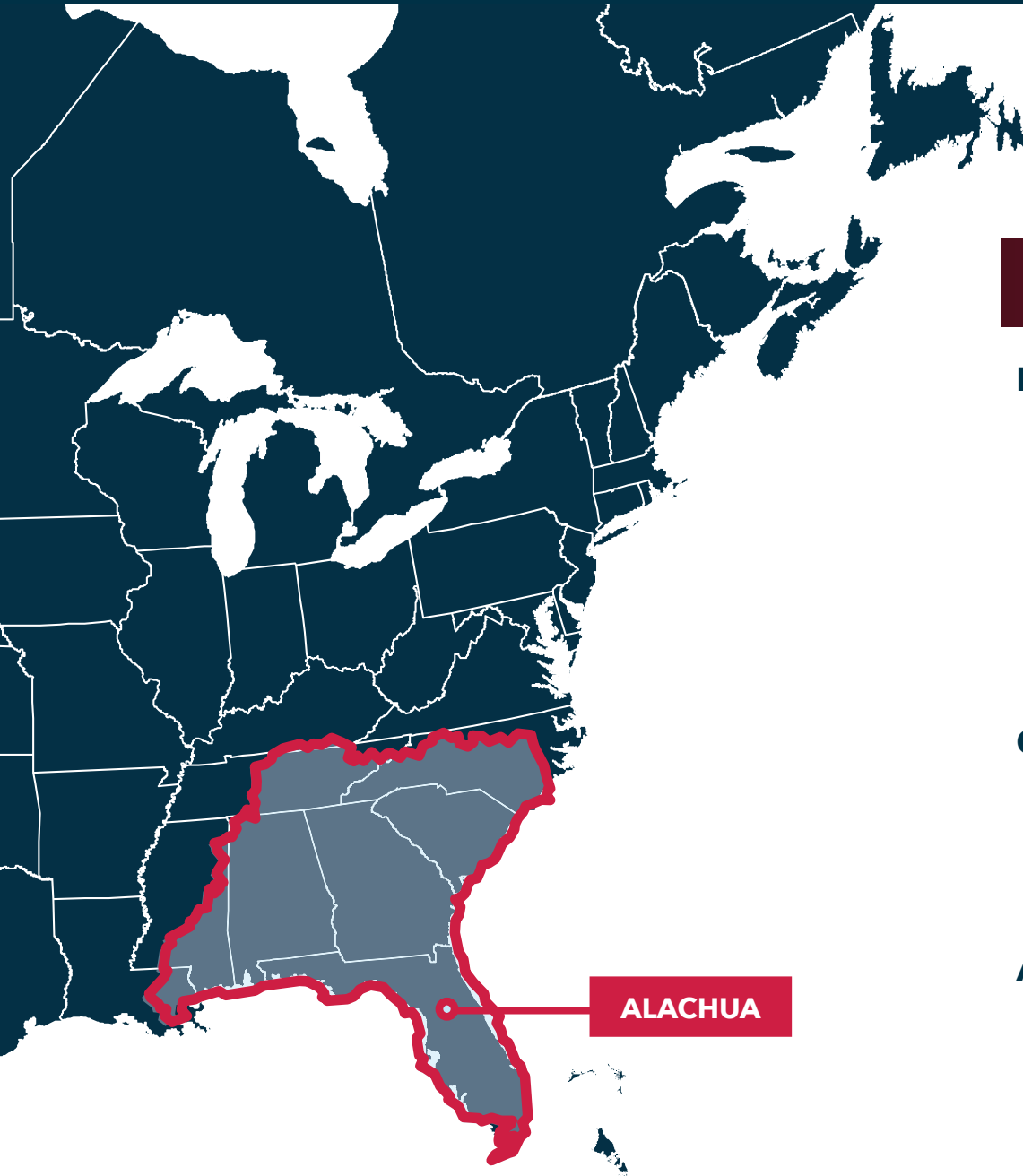
Alachua Commerce Center | 11600 NW 173rd Street | Gainesville, FL 32615

- **GAINESVILLE, FL**
19 miles, 31 mins
- **INTERCHANGE FOR I-75/I-10**
50.3 miles, 47 mins
- **JACKSONVILLE, FL**
77 miles, 1 hr 28 mins
- **TALLAHASSEE, FL**
137 miles, 2 hrs 7 mins
- **TAMPA, FL**
147 miles, 2 hrs 9 mins
- **ATLANTA, GA**
318 miles, 4 hrs 44 mins
- **MIAMI, FL**
353 miles, 5 hrs 14 mins



LOCATION

Alachua Commerce Center | 11600 NW 173rd Street | Gainesville, FL 32615



WITHIN 8 HOUR DRIVE TIME

Florida

- Jacksonville
- Orlando
- Tampa
- Tallahassee
- Pensacola
- Fort Lauderdale
- Miami

Georgia

- Savannah
- Atlanta
- Athens
- Columbus

Alabama

- Birmingham
- Mobile
- Huntsville

Louisiana

- New Orleans

Mississippi

- Hattiesburg
- Biloxi

South Carolina

- Charleston
- Greenville
- Columbia

North Carolina

- Charlotte
- Wilmington
- Fayetteville

Tennessee

- Chattanooga
- Knoxville

INDUSTRIAL SPACE IN ALACHUA COMMERCE CENTER FOR LEASE

11600 NW 173rd Street | Suite 100 & 110 | Gainesville, FL 32615

16,000± SF – 51,062± SF | \$8.00/SF NNN

DAN DROTOS, MSRE, SIOR, CCIM

President & Managing Principal

☎ 352.420.9889

☎ 954.551.9846

ddrotos@lee-associates.com

LAUREN VAZQUEZ, SIOR

Vice President

☎ 352.420.9889

☎ 352.222.4590

lvazquez@lee-associates.com

RORY CAUSSEUX, P.E.

Principal

☎ 352.420.9889

☎ 352.317.6341

rcausseux@lee-associates.com

