

INDU
STRY

MEDICAL OFFICE
± 5,000 TO ±15,000 RSF

13160
MINDANAO WAY
MARINA DEL REY

FOR LEASE



INDUSTRYPARTNERS.COM
310 395 5151
CA BRE No. 01900833

DANIEL PICKART
dp@industrypartners.com
CA BRE No. 01914551

TRAVIS LANDRUM
dp@industrypartners.com
CA BRE No. 01435827

FOR LEASE

MEDICAL OFFICE

13160 MINDANAO WAY MARINA DEL REY CA 90292

2ND FLOOR SUITES

Ste 205/209

Ste 211

Ste 215/217

AVAILABLE RSF

± 2,819 RSF

± 1,644 RSF

± 3,951 RSF

RATE

\$5.10 / SF per Mo. / MG

TERM

5-10 Years

OCCUPANCY

Immediate

PARKING

4 per 1,000 SF

Creative office building in the heart of Marina Del Rey

FEATURES

Creative, natural light-filled ground level corner suite with glass roll up door

Architecture by HansonLA

Polished concrete floors throughout

Abundant and walkable lunch spots, minutes away from the marina, beach, and nature reserves

Build to suit medical suits in a variety of sizes and possible layouts.

Walkable to numerous amenities in the immediate area

Surface parking for convenient patient experience



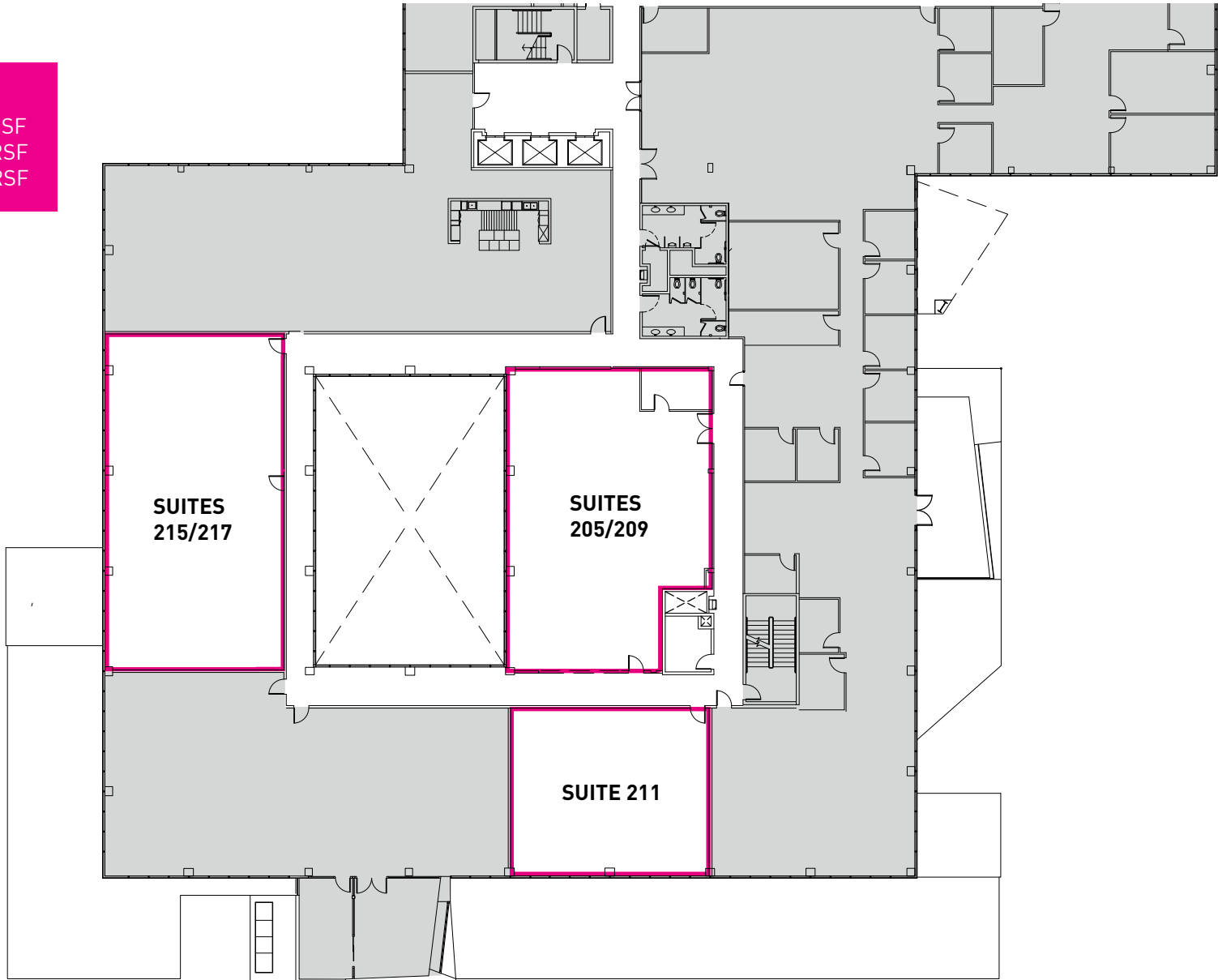
No warranty or representation is made to the accuracy of the foregoing information. Terms of sale or lease are subject to change or withdrawal without notice.

©2022 INDUSTRY PARTNERS, INC.

INDUSTRYPARTNERS.COM 310 395 5151

CA BRE NO. 01900833

GROUND FLOOR
Ste 205/209 ± 2,819 RSF
Ste 211 ± 1,644 RSF
Ste 215/217 ± 3,951 RSF



FOR LEASE

MEDICAL OFFICE

13160 MINDANAO WAY MARINA DEL REY CA 90292

SECONDa FLOOR PHOTOS





About the neighborhood

Marina del Rey is an unincorporated seaside community in LA County, with a marina that is a major boating and water recreation destination.

The marina is North America's largest man-made small-craft harbor and is home to approximately 5,000 boats.

The area is a popular tourism destination for water activities such as paddle board and kayak rentals, dining cruises, and yacht charters.

This Westside locale is approximately 4 miles (6.4 km) south of Santa Monica, and 4 miles north of LAX.



No warranty or representation is made to the accuracy of the foregoing information. Terms of sale or lease are subject to change or withdrawal without notice. ©2020 INDUSTRY PARTNERS, INC.