

# SOUTH BAY BUSINESS CENTER

2807 & 2827 HOOVER AVENUE  
2704 & 2712 TRANSPORTATION AVENUE

NATIONAL CITY, CA 91950



±1,200 - ±3,460 SF INDUSTRIAL WAREHOUSE SPACES AVAILABLE

## CURT PERRY

Vice President | Lic #01466077  
858.458.3304 | cperry@voitco.com

## MICHAEL MOSSMER

Senior Vice President | Lic #00998326  
858.458.3347 | mmossmer@voitco.com

**Voit**  
REAL ESTATE SERVICES

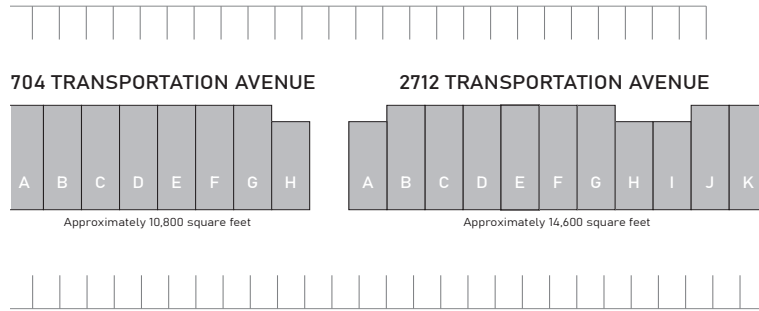
**MPG**  
MOSSMER  
PERRY GROUP



## PROPERTY FEATURES

- » Well maintained multi-tenant industrial park in National City
- » Easy access to Highway 54 and Interstates, 5, 805 and 15
- » 2.31/1,000 SF parking ratio
- » 16' clear height
- » ±1,200 - ±3,460 SF warehouse available for lease

# SITE PLAN

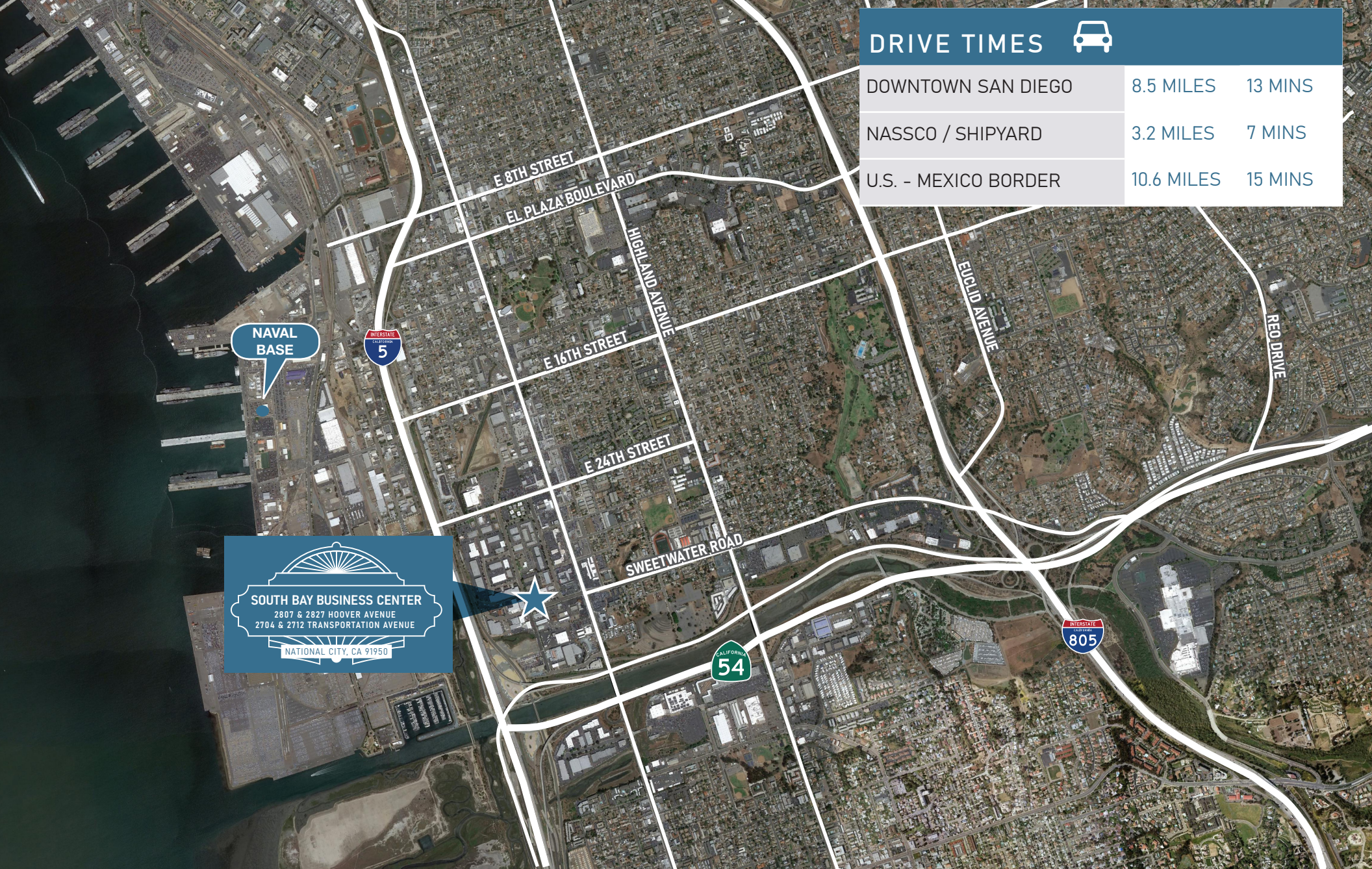


AVAILABLE
  FUTURE AVAILABILITY

## CURRENT AVAILABILITY

ADDRESS	SUITE	SIZE (SF)	LEASE RATE	COMMENTS
2807 Hoover Ave	J/K	±2,600	\$1.75 + CAM	Now
2827 Hoover Ave	A/B	±3,460	\$1.69 + CAM	Now
2827 Hoover Ave	K	±1,200	\$1.85 + CAM	Now

\*CAM charge is approximately \$0.09 PSF



DRIVE TIMES 		
DOWNTOWN SAN DIEGO	8.5 MILES	13 MINS
NASSCO / SHIPYARD	3.2 MILES	7 MINS
U.S. - MEXICO BORDER	10.6 MILES	15 MINS

NAVAL  
BASE

**SOUTH BAY BUSINESS CENTER**  
 2807 & 2827 HOOVER AVENUE  
 2704 & 2712 TRANSPORTATION AVENUE  
 NATIONAL CITY, CA 91950

4180 La Jolla Village Drive, Suite 100, La Jolla, CA 92037 · 858.453.0505 · 858.408.3976 Fax · Lic #01991785 | www.voitco.com

Licensed as Real Estate Salespersons by the DRE. The information contained herein has been obtained from sources we deem reliable. While we have no reason to doubt its accuracy, we do not guarantee it. ©2024 Voit Real Estate Services, Inc. All Rights Reserved.

**Voit**  
 REAL ESTATE SERVICES

**MPG**  
 MOSSMER  
 PERRY GROUP