

11240
PLAYA
COURT
Culver City

SUBLEASE

SHARED SUBLEASE
WITH ESTABLISHED
FASHION BRAND



ZACUTO GROUP
COMMERCIAL REAL ESTATE

11240 PLAYA COURT, CULVER CITY, CALIFORNIA

11240 PLAYA COURT *Culver City*

Zacuto Group is pleased to bring to market a unique creative compound within an exclusive media district of Culver City.

Surrounded by acclaimed studios and buzzing companies, Playa Court is a hidden enclave in one of Los Angeles' most desirable locations.



DETAILS

- Established Fashion Brand looking to share its HQ with a compatible subtenant.
- Gorgeous fully furnished and turn-key facility
- Offices and Conference Rooms
- Fully built-out Photography and Production studios
- Warehouse Space and infrastructure for e-commerce

11240 PLAYA COURT, CULVER CITY, CALIFORNIA

LAX

TikTok

SONY PICTURES COSTUME DEPT

PUNCH STUDIOS

11240
PLAYA
COURT
Culver City

PLAYA STUDIOS

JAMM

BEYOND YOGA



DETAILS

11240 PLAYA COURT

CULVER CITY
CALIFORNIA 90230

BUILDING SIZE

14,503 SF

SUBLEASE SIZE

2,000 - 7,000 SF

LEASE RATE

\$5.00/SF MG

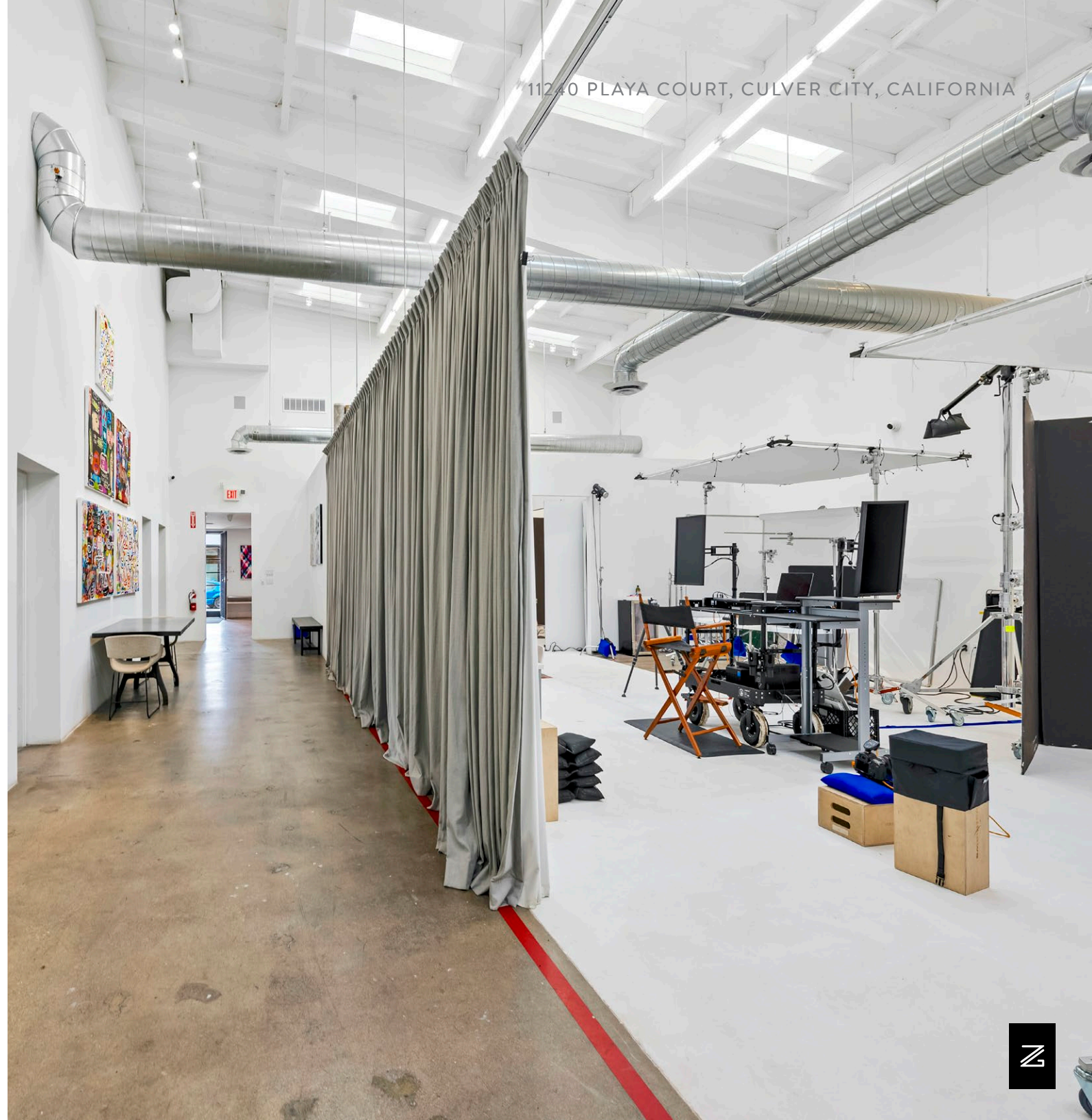
LOT SIZE

23,522 SF

TURN KEY CREATIVE COMPOUND

Big and bright sun filled building with skylights. Property offers a mix of private offices, reception /lobby, conference rooms, full kitchen, open spaces and a back warehouse.

Flexible layout for multiple configurations and uses



11240 PLAYA COURT, CULVER CITY, CALIFORNIA

DETAILS

PARKING

Gated lot + abundant street

POWER

1200AMP, 480 V, 3 phase

CEILING HEIGHT

12 - 20ft

OUTDOOR AMENITIES

Expansive garden & paved spaces

MODERN + RENOVATED

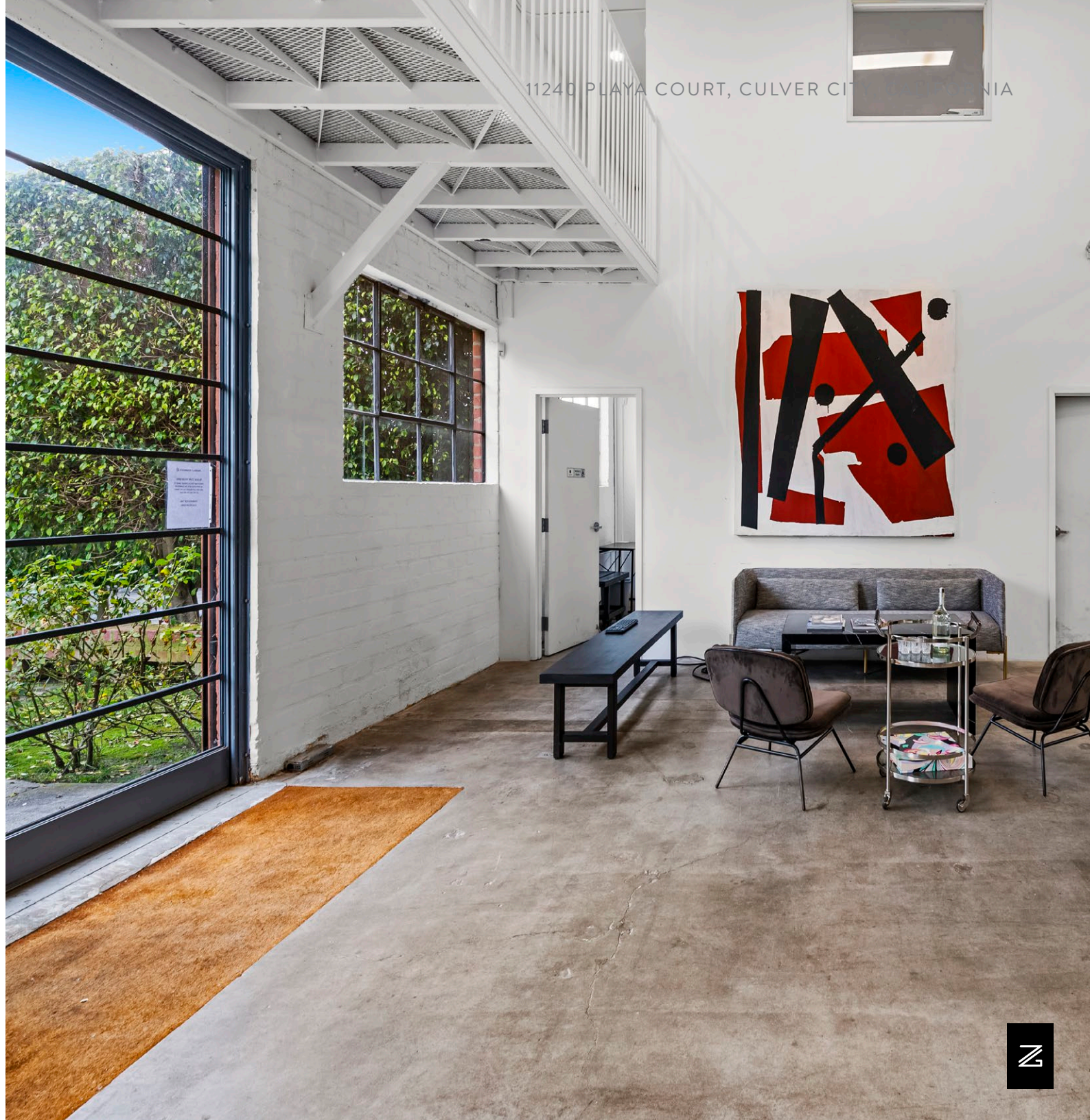
Built in 1965, and renovated in 2021 with new roof, 3 HVAC units, and upgraded lighting systems.

PRIVATE PARKING

On-site gated parking for up to 8 cars + abundant street parking and striped spaces in front of the property

IN GOOD COMPANY

The low profile brick building sits along an exclusive corridor neighboring Sony Studios, Jamm Visual Productions, Beyond Yoga, and Tiktok HQ



11240 PLAYA COURT, CULVER CITY, CALIFORNIA

FLOOR PLAN

11240 PLAYA COURT, CULVER CITY, CALIFORNIA

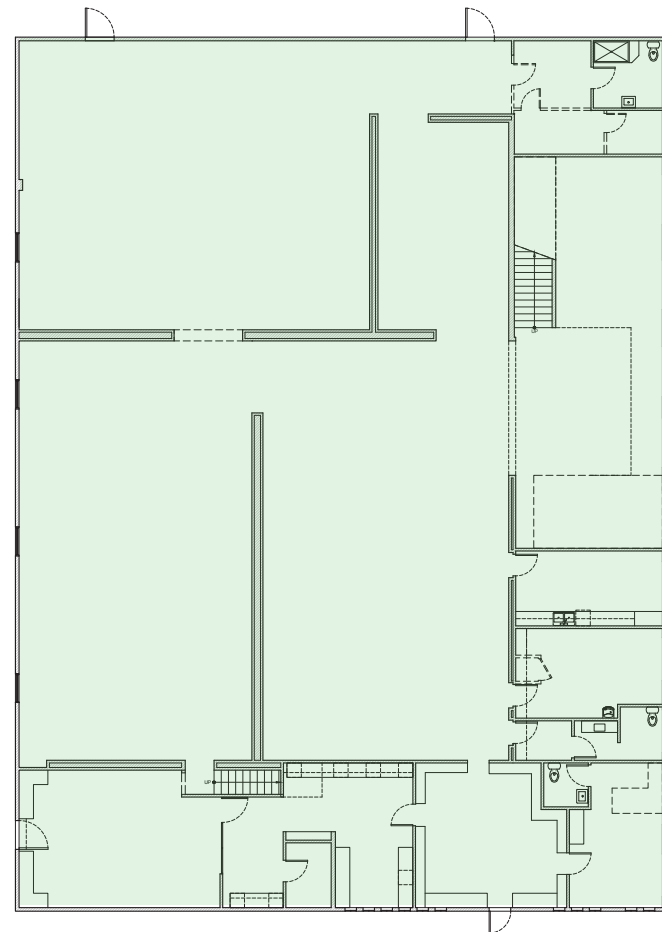
TOTAL SF: 14,503 SF

GROUND FLOOR:

11,011 SF

2ND FLR + MEZZANINE:

3,492 SF

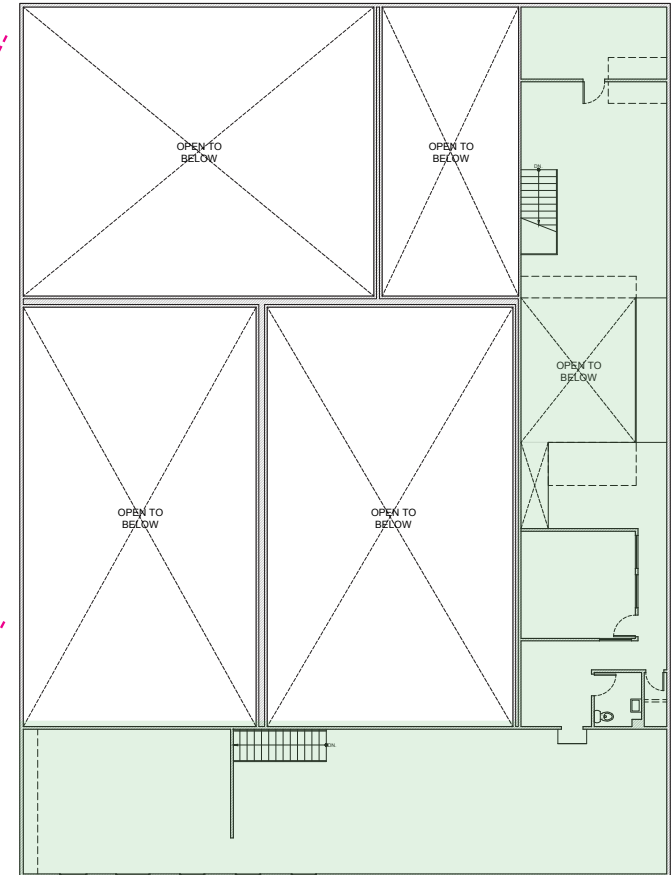


100 FT

PLAYA COURT

GROUND FLOOR

11,011 SF



2ND FLOOR / MEZZANINE

3,492 SF



SUBLEASE

11240 PLAYA COURT, CULVER CITY, CALIFORNIA



SUBLEASE

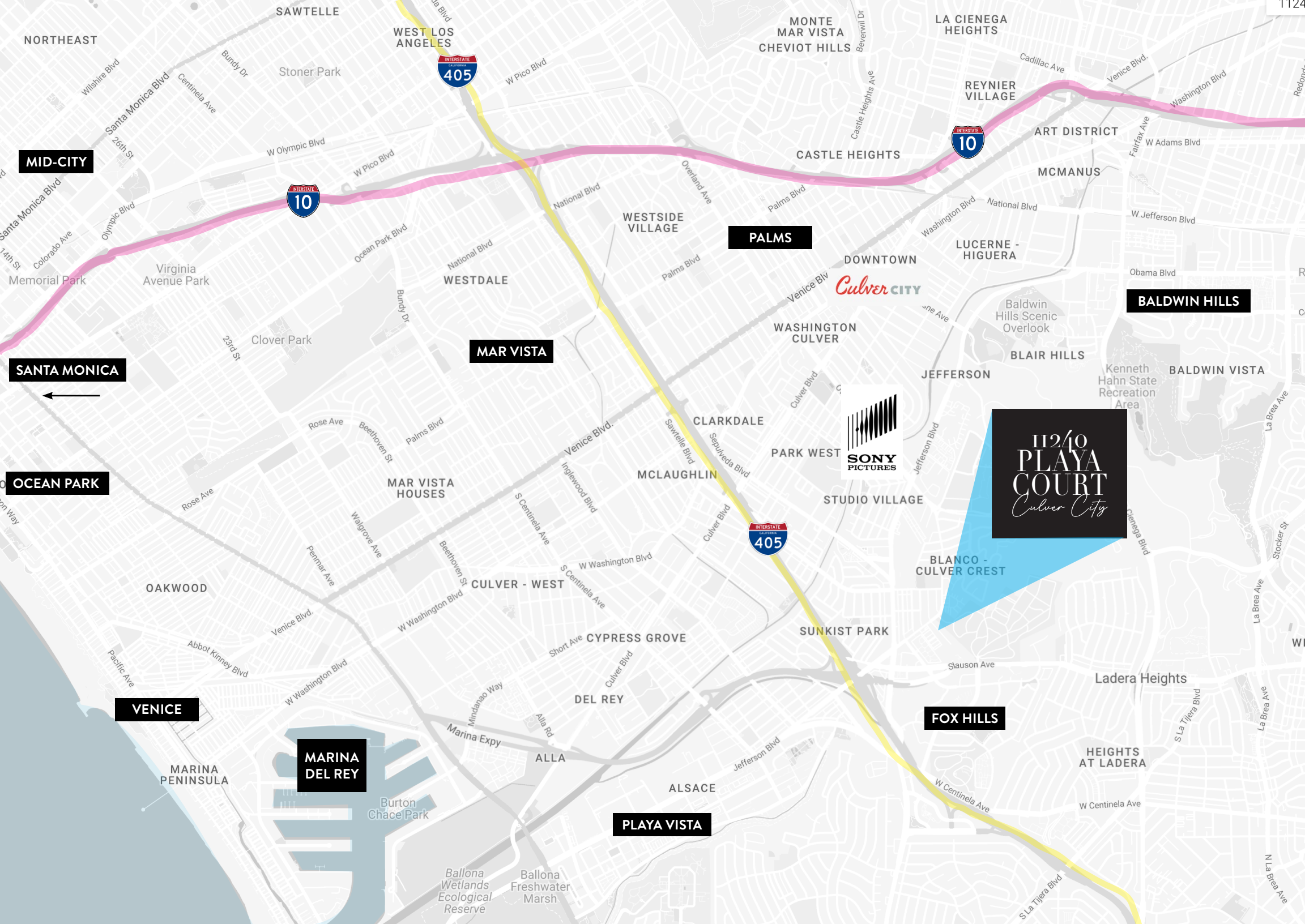
11240 PLAYA COURT, CULVER CITY, CALIFORNIA



SUBLEASE

11240 PLAYA COURT, CULVER CITY, CALIFORNIA





MID-CITY

SANTA MONICA

OCEAN PARK

VENICE

MARINA DEL REY

MAR VISTA

PALMS

PLAYA VISTA

FOX HILLS

BALDWIN HILLS

11240
PLAYA
COURT
Culver City

Culver CITY



NEIGHBORHOOD AMENITIES

11240 PLAYA COURT, CULVER CITY, CALIFORNIA



📍 JON & VINNYS SLAUSON



📍 WESTFIELD CULVER CITY



📍 BLUE BOTTLE COFFEE



📍 TOCAYA ORGANIC



📍 HOWARD HUGHES ENTERTAINMENT



📍 TRADER JOES



11240
PLAYA
COURT
Culver City



ZACUTO GROUP
COMMERCIAL REAL ESTATE

JAKE ZACUTO

Managing Director

310.469.9012

jake@zacutogroup.com

BRE #01377441

JACKIE LUBRANO

Senior Vice President

267.278.0443

jackie@zacutogroup.com

BRE #02024601

No warranty, express or implied, is made as to the accuracy of the information contained herein. This information is submitted subject to errors, omissions, change of price, rental or other conditions, withdrawal without notice. All parties who receive this material should not rely on it, but should use it as a starting point of analysis, and should independently confirm the accuracy of the information contained herein through a due diligence review of the books, records, files and documents that constitute reliable sources of the information described herein. Logos and images are for identification purposes only and may be trademarks of their respective companies. All terms provided are approximate. Parties to verify. 1/2025

ZACUTOGROUP.COM | 310.469.9300

